

**SURFACE MOUNT SCHOTTKY
BARRIER RECTIFIERS**

SS320B

FEATURES

- Metal-Semiconductor junction with guard ring
- Epitaxial construction
- Low forward voltage drop, low swithing losses
- High surge capacity
- For use in low voltage, high frequency inverters free wheeling, and polarity protection applications



MECHANICAL DATA

- Case: SMB molded plastic body
- Polarity: Color band denotes cathode end
- Mounting position: ANY
- Weight: 0.003 ounces, 0.093 gram

MAXIMUM RATINGS AND ELECTRICAL CHARACTERISTICS

Ratings at 25°C ambient temperature unless otherwise specified

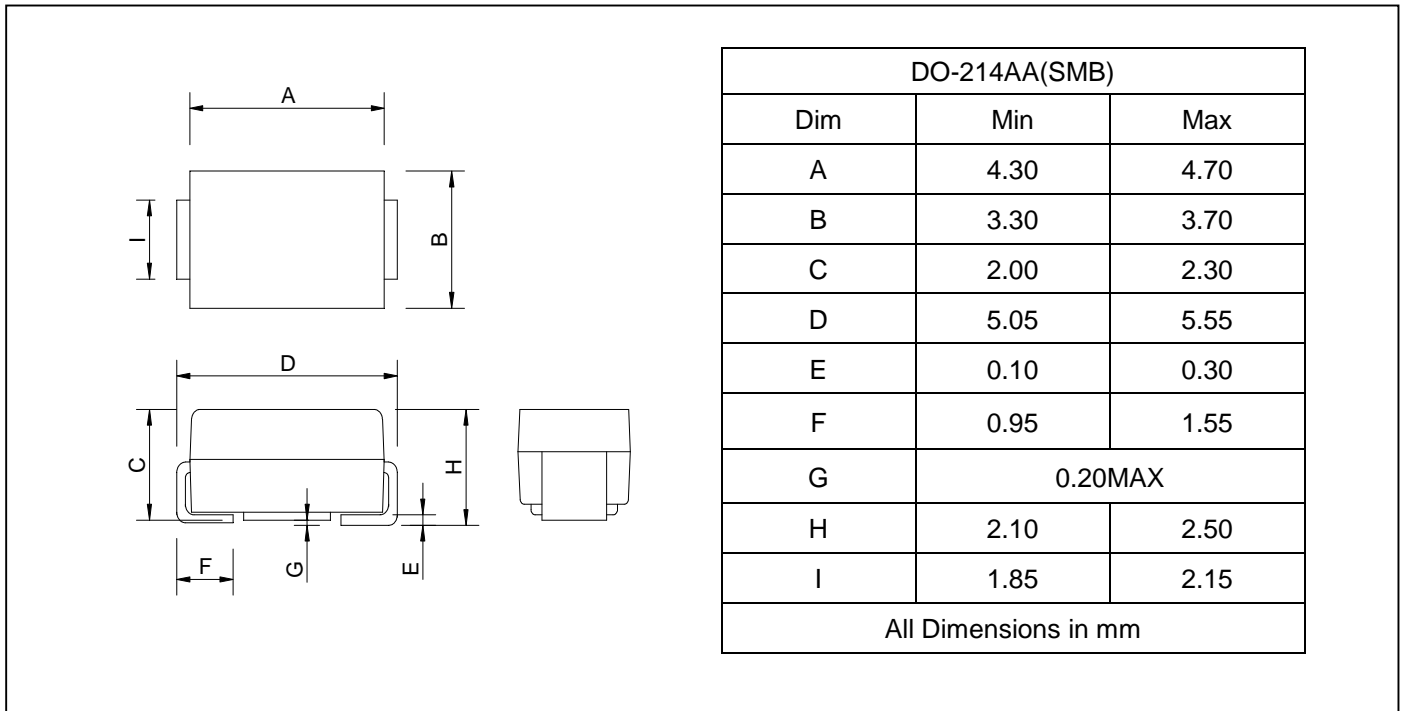
		SS320B	UNITS
Marking cord		SS3DB	
Maximum repetitive peak reverse voltage	V_{RRM}	200	V
Maximum RMS voltage	V_{RWS}	140	V
Maximum DC blocking voltage	V_{DC}	200	V
Maximum average forward rectified current at $T_J=90^{\circ}C$	$I_{F(AV)}$	3.0	A
Peak forward surge current 8.3ms single half-sine-wave	I_{FSM}	80.0	A
Maximum instantaneous forward voltage at $I_{FM}=3.0A$	V_F	0.95	V
Maximum DC reverse current $T_J=25^{\circ}C$ at rated DC blocking voltage $T_J=100^{\circ}C$	I_R	0.1 10	m A
Maximum thermal resistance (Note1)	$R_{\theta JA}$	40	$^{\circ}C/W$
Operating temperature range	T_J	-55-----+125	$^{\circ}C$
Storage temperature range	T_{STG}	-55-----+125	$^{\circ}C$

NOTE: 1. Thermal resistance from junction to ambient.

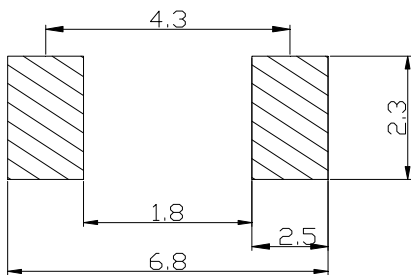
**SURFACE MOUNT SCHOTTKY
BARRIER RECTIFIERS**

SS320B

PACKAGE OUTLINE DIMENSIONS



SOLDERING FOOTPRINT



Unit : mm

PACKAGE INFORMATION

Device	Package	Shipping
SS320B	DO-214AA(SMB)	3000/Tape&Reel

**SURFACE MOUNT SCHOTTKY
BARRIER RECTIFIERS**

SS320B

FIG.1 TYPICAL FORWARD CHARACTERISTICS

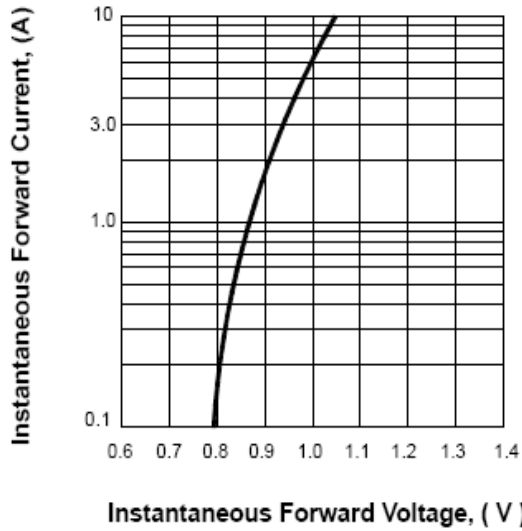


FIG.2 FORWARD DERATING CURVE

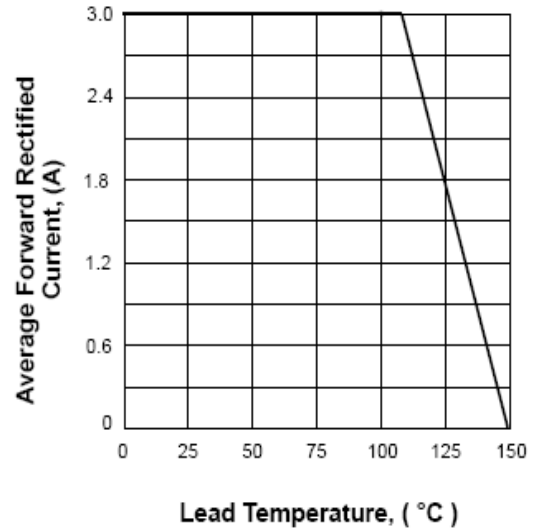


FIG.3 TYPICAL REVERSE CHARACTERISTICS

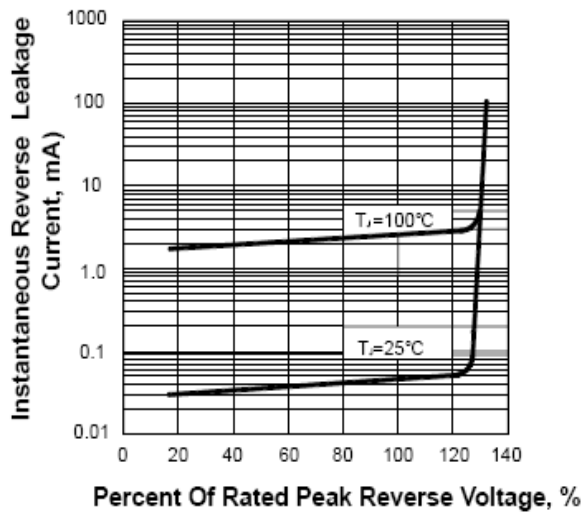


FIG.4 PEAK FORWARD SURGE CURRENT

