



CMOS Low Voltage 4 Ω Quad SPST Switches

ADG711/ADG712/ADG713

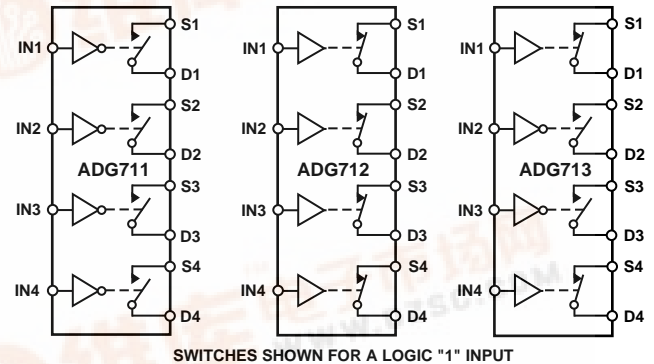
FEATURES

+1.8 V to +5.5 V Single Supply
Low On Resistance (2.5 Ω Typ)
Low On-Resistance Flatness
-3 dB Bandwidth > 200 MHz
Rail-to-Rail Operation
16-Lead TSSOP and SOIC Packages
Fast Switching Times
 t_{ON} 16 ns
 t_{OFF} 10 ns
Typical Power Consumption (< 0.01 μ W)
TTL/CMOS Compatible

APPLICATIONS

Battery Powered Systems
Communication Systems
Sample Hold Systems
Audio Signal Routing
Video Switching
Mechanical Reed Relay Replacement

FUNCTIONAL BLOCK DIAGRAMS



GENERAL DESCRIPTION

The ADG711, ADG712 and ADG713 are monolithic CMOS devices containing four independently selectable switches. These switches are designed on an advanced submicron process that provides low power dissipation yet gives high switching speed, low on resistance, low leakage currents and high bandwidth.

They are designed to operate from a single +1.8 V to +5.5 V supply, making them ideal for use in battery powered instruments and with the new generation of DACs and ADCs from Analog Devices. Fast switching times and high bandwidth make the part suitable for video signal switching.

The ADG711, ADG712 and ADG713 contain four independent single-pole/single throw (SPST) switches. The ADG711 and ADG712 differ only in that the digital control logic is inverted. The ADG711 switches are turned on with a logic low on the appropriate control input, while a logic high is required to turn on the switches of the ADG712. The ADG713 contains two switches whose digital control logic is similar to the ADG711, while the logic is inverted on the other two switches.

Each switch conducts equally well in both directions when ON. The ADG713 exhibits break-before-make switching action.

The ADG711/ADG712/ADG713 are available in 16-lead TSSOP and 16-lead SOIC packages.

PRODUCT HIGHLIGHTS

1. +1.8 V to +5.5 V Single Supply Operation. The ADG711, ADG712 and ADG713 offer high performance and are fully specified and guaranteed with +3 V and +5 V supply rails.
2. Very Low R_{ON} (4.5 Ω max at +5 V, 8 Ω max at +3 V). At supply voltage of +1.8 V, R_{ON} is typically 35 Ω over the temperature range.
3. Low On-Resistance Flatness.
4. -3 dB Bandwidth >200 MHz.
5. Low Power Dissipation. CMOS construction ensures low power dissipation.
6. Fast t_{ON}/t_{OFF} .
7. Break-Before-Make Switching. This prevents channel shorting when the switches are configured as a multiplexer (ADG713 only).
8. 16-Lead TSSOP and 16-Lead SOIC Packages.

REV. 0

Information furnished by Analog Devices is believed to be accurate and reliable. However, no responsibility is assumed by Analog Devices for its use, nor for any infringements of patents or other rights of third parties which may result from its use. No license is granted by implication or otherwise under any patent or patent rights of Analog Devices.

One Technology Way, P.O. Box 9106, Norwood, MA 02062-9106, U.S.A.
 Tel: 781/329-4700 World Wide Web Site: <http://www.analog.com>
 Fax: 781/326-8703 © Analog Devices, Inc. 1998

ADG711/ADG712/ADG713—SPECIFICATIONS¹ ($V_{DD} = +5\text{ V} \pm 10\%$, $GND = 0\text{ V}$. All specifications -40°C to $+85^{\circ}\text{C}$ unless otherwise noted.)

Parameter	B Version		Units	Test Conditions/Comments
	+25°C	−40°C to +85°C		
ANALOG SWITCH				
Analog Signal Range		0 V to V _{DD}	V	
On-Resistance (R _{ON})	2.5		Ω typ	V _S = 0 V to V _{DD} , I _S = −10 mA;
	4	4.5	Ω max	Test Circuit 1
On-Resistance Match Between Channels (ΔR _{ON})		0.05	Ω typ	V _S = 0 V to V _{DD} , I _S = −10 mA
		0.3	Ω max	
On-Resistance Flatness (R _{FLAT(ON)})	0.5		Ω typ	V _S = 0 V to V _{DD} , I _S = −10 mA
		1.0	Ω max	
LEAKAGE CURRENTS				
Source OFF Leakage I _S (OFF)	±0.01		nA typ	V _{DD} = +5.5 V;
	±0.1	±0.2	nA max	V _S = 4.5 V/1 V, V _D = 1 V/4.5 V;
Drain OFF Leakage I _D (OFF)	±0.01		nA typ	Test Circuit 2
	±0.1	±0.2	nA max	V _S = 4.5 V/1 V, V _D = 1 V/4.5 V;
Channel ON Leakage I _D , I _S (ON)	±0.01		nA typ	Test Circuit 2
	±0.1	±0.2	nA max	V _S = V _D = 1 V, or 4.5 V;
				Test Circuit 3
DIGITAL INPUTS				
Input High Voltage, V _{INH}		2.4	V min	
Input Low Voltage, V _{INL}		0.8	V max	
Input Current				
I _{INL} or I _{INH}	0.005		μA typ	V _{IN} = V _{INL} or V _{INH}
		±0.1	μA max	
DYNAMIC CHARACTERISTICS ²				
t _{ON}	11		ns typ	R _L = 300 Ω, C _L = 35 pF,
		16	ns max	V _S = 3 V; Test Circuit 4
t _{OFF}	6		ns typ	R _L = 300 Ω, C _L = 35 pF,
		10	ns max	V _S = 3 V; Test Circuit 4
Break-Before-Make Time Delay, t _D	6		ns typ	R _L = 300 Ω, C _L = 35 pF,
(ADG713 Only)		1	ns min	V _{S1} = V _{S2} = 3 V; Test Circuit 5
Charge Injection	3		pC typ	V _S = 2 V; R _S = 0 Ω, C _L = 1 nF;
				Test Circuit 6
Off Isolation	−58		dB typ	R _L = 50 Ω, C _L = 5 pF, f = 10 MHz
	−78		dB typ	R _L = 50 Ω, C _L = 5 pF, f = 1 MHz;
				Test Circuit 7
Channel-to-Channel Crosstalk	−90		dB typ	R _L = 50 Ω, C _L = 5 pF, f = 10 MHz;
				Test Circuit 8
Bandwidth −3 dB	200		MHz typ	R _L = 50 Ω, C _L = 5 pF; Test Circuit 9
C _S (OFF)	10		pF typ	
C _D (OFF)	10		pF typ	
C _D , C _S (ON)	22		pF typ	
POWER REQUIREMENTS				
I _{DD}	0.001		μA typ	V _{DD} = +5.5 V
		1.0	μA max	Digital Inputs = 0 V or 5 V

NOTES

¹Temperature ranges are as follows: B Version: -40°C to $+85^{\circ}\text{C}$.

²Guaranteed by design, not subject to production test.

Specifications subject to change without notice.

SPECIFICATIONS¹

($V_{DD} = +3\text{ V} \pm 10\%$, $GND = 0\text{ V}$. All specifications -40°C to $+85^{\circ}\text{C}$ unless otherwise noted.)

Parameter	B Version		Units	Test Conditions/Comments
	+25°C	−40°C to +85°C		
ANALOG SWITCH				
Analog Signal Range		0 V to V _{DD}	V	
On-Resistance (R _{ON})	5	5.5 8	Ω typ Ω max	V _S = 0 V to V _{DD} , I _S = −10 mA; Test Circuit 1
On-Resistance Match Between Channels (ΔR _{ON})	0.1	0.3	Ω typ Ω max	V _S = 0 V to V _{DD} , I _S = −10 mA
On-Resistance Flatness (R _{FLAT(ON)})		2.5	Ω typ	V _S = 0 V to V _{DD} , I _S = −10 mA
LEAKAGE CURRENTS				
Source OFF Leakage I _S (OFF)	±0.01 ±0.1	±0.2	nA typ nA max	V _{DD} = +3.3 V; V _S = 3 V/1 V, V _D = 1 V/3 V; Test Circuit 2
Drain OFF Leakage I _D (OFF)	±0.01 ±0.1	±0.2	nA typ nA max	V _S = 3 V/1 V, V _D = 1 V/3 V; Test Circuit 2
Channel ON Leakage I _D , I _S (ON)	±0.01 ±0.1	±0.2	nA typ nA max	V _S = V _D = 1 V, or 3 V; Test Circuit 3
DIGITAL INPUTS				
Input High Voltage, V _{INH}		2.0	V min	
Input Low Voltage, V _{INL}		0.4	V max	
Input Current I _{INL} or I _{INH}	0.005	±0.1	μA typ μA max	V _{IN} = V _{INL} or V _{INH}
DYNAMIC CHARACTERISTICS ²				
t _{ON}	13	20	ns typ ns max	R _L = 300 Ω, C _L = 35 pF, V _S = 2 V; Test Circuit 4
t _{OFF}	7	12	ns typ ns max	R _L = 300 Ω, C _L = 35 pF, V _S = 2 V; Test Circuit 4
Break-Before-Make Time Delay, t _D (ADG713 Only)	7	1	ns typ ns min	R _L = 300 Ω, C _L = 35 pF, V _{S1} = V _{S2} = 2 V; Test Circuit 5
Charge Injection	3		pC typ	V _S = 1.5 V; R _S = 0 Ω, C _L = 1 nF; Test Circuit 6
Off Isolation	−58 −78		dB typ dB typ	R _L = 50 Ω, C _L = 5 pF, f = 10 MHz R _L = 50 Ω, C _L = 5 pF, f = 1 MHz; Test Circuit 7
Channel-to-Channel Crosstalk	−90		dB typ	R _L = 50 Ω, C _L = 5 pF, f = 10 MHz; Test Circuit 8
Bandwidth −3 dB	200		MHz typ	R _L = 50 Ω, C _L = 5 pF; Test Circuit 9
C _S (OFF)	10		pF typ	
C _D (OFF)	10		pF typ	
C _D , C _S (ON)	22		pF typ	
POWER REQUIREMENTS				
I _{DD}	0.001	1.0	μA typ μA max	V _{DD} = +3.3 V Digital Inputs = 0 V or 3 V

NOTES¹Temperature ranges are as follows: B Version: -40°C to $+85^{\circ}\text{C}$.²Guaranteed by design, not subject to production test.

Specifications subject to change without notice.

ADG711/ADG712/ADG713

ABSOLUTE MAXIMUM RATINGS¹

(T_A = +25°C unless otherwise noted)

V _{DD} to GND	−0.3 V to +6 V
Analog, Digital Inputs ²	−0.3 V to V _{DD} +0.3 V or 30 mA, Whichever Occurs First
Continuous Current, S or D	30 mA
Peak Current, S or D	100 mA (Pulsed at 1 ms, 10% Duty Cycle max)
Operating Temperature Range	
Industrial (B Version)	−40°C to +85°C
Storage Temperature Range	−65°C to +150°C
Junction Temperature	+150°C
TSSOP Package, Power Dissipation	430 mW
θ _{JA} Thermal Impedance	150°C/W
θ _{JC} Thermal Impedance	27°C/W

SOIC Package, Power Dissipation	520 mW
θ _{JA} Thermal Impedance	125°C/W
θ _{JC} Thermal Impedance	42°C/W
Lead Temperature, Soldering	
Vapor Phase (60 sec)	+215°C
Infrared (15 sec)	+220°C
ESD	2 kV

NOTES

¹Stresses above those listed under Absolute Maximum Ratings may cause permanent damage to the device. This is a stress rating only; functional operation of the device at these or any other conditions above those listed in the operational sections of this specification is not implied. Exposure to absolute maximum rating conditions for extended periods may affect device reliability. Only one absolute maximum rating may be applied at any one time.

²Overvoltages at IN, S or D will be clamped by internal diodes. Current should be limited to the maximum ratings given.

CAUTION

ESD (electrostatic discharge) sensitive device. Electrostatic charges as high as 4000 V readily accumulate on the human body and test equipment and can discharge without detection. Although the ADG711/ADG712/ADG713 feature proprietary ESD protection circuitry, permanent damage may occur on devices subjected to high energy electrostatic discharges. Therefore, proper ESD precautions are recommended to avoid performance degradation or loss of functionality.



ORDERING GUIDE

Model	Temperature Range	Package Description	Package Option
ADG711BR	−40°C to +85°C	0.15" Small Outline (SOIC)	R-16A
ADG712BR	−40°C to +85°C	0.15" Small Outline (SOIC)	R-16A
ADG713BR	−40°C to +85°C	0.15" Small Outline (SOIC)	R-16A
ADG711BRU	−40°C to +85°C	Thin Shrink Small Outline (TSSOP)	RU-16
ADG712BRU	−40°C to +85°C	Thin Shrink Small Outline (TSSOP)	RU-16
ADG713BRU	−40°C to +85°C	Thin Shrink Small Outline (TSSOP)	RU-16

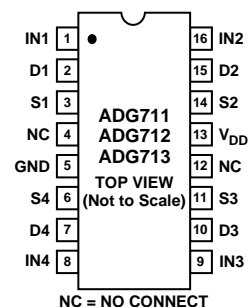
Table I. Truth Table (ADG711/ADG712)

ADG711 In	ADG712 In	Switch Condition
0	1	ON
1	0	OFF

Table II. Truth Table (ADG713)

Logic	Switch 1, 4	Switch 2, 3
0	OFF	ON
1	ON	OFF

PIN CONFIGURATION (TSSOP/SOIC)



TERMINOLOGY

V_{DD}	Most positive power supply potential.	t_{OFF}	Delay between applying the digital control input and the output switching off.
GND	Ground (0 V) reference.	t_D	“OFF” time or “ON” time measured between the 90% points of both switches, when switching from one address state to another. (ADG713 only).
S	Source terminal. May be an input or output.	Crosstalk	A measure of unwanted signal that is coupled through from one channel to another as a result of parasitic capacitance.
D	Drain terminal. May be an input or output.	Off Isolation	A measure of unwanted signal coupling through an “OFF” switch.
IN	Logic control input.	Charge Injection	A measure of the glitch impulse transferred from the digital input to the analog output during switching.
R_{ON}	Ohmic resistance between D and S.	Bandwidth	The frequency at which the output is attenuated by 3 dB.
ΔR_{ON}	On resistance match between any two channels i.e., $R_{ONmax}-R_{ONmin}$.	On Response	The frequency response of the “ON” switch.
$R_{FLAT(ON)}$	Flatness is defined as the difference between the maximum and minimum value of on-resistance as measured over the specified analog signal range.	On Loss	The voltage drop across the “ON” switch, seen on the On Response vs. Frequency plot as how many dBs the signal is away from 0 dB at very low frequencies.
I_S (OFF)	Source leakage current with the switch “OFF.”		
I_D (OFF)	Drain leakage current with the switch “OFF.”		
I_D, I_S (ON)	Channel leakage current with the switch “ON.”		
V_D (V_S)	Analog voltage on terminals D, S.		
C_S (OFF)	“OFF” switch source capacitance.		
C_D (OFF)	“OFF” switch drain capacitance.		
C_D, C_S (ON)	“ON” switch capacitance.		
t_{ON}	Delay between applying the digital control input and the output switching on.		

Typical Performance Characteristics

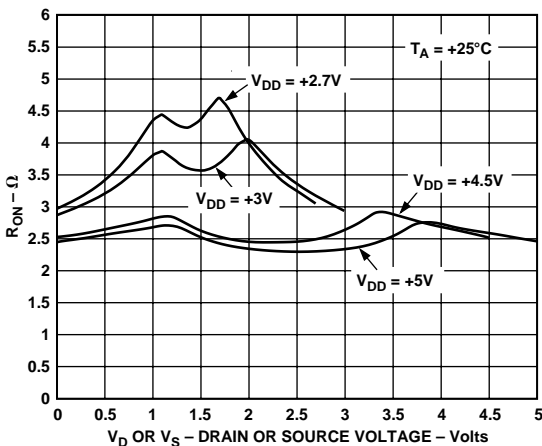


Figure 1. On Resistance as a Function of V_D (V_S)

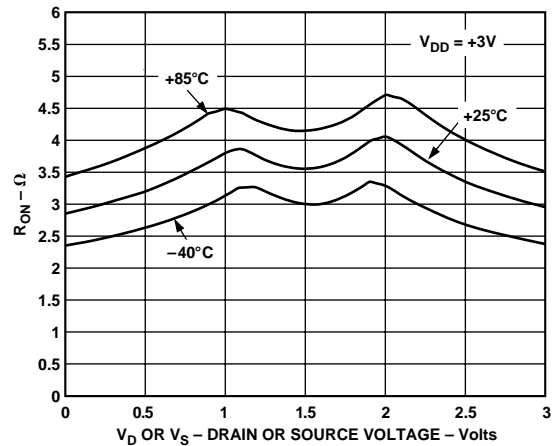


Figure 2. On Resistance as a Function of V_D (V_S) for Different Temperatures $V_{DD} = 3 V$

ADG711/ADG712/ADG713—Typical Performance Characteristics

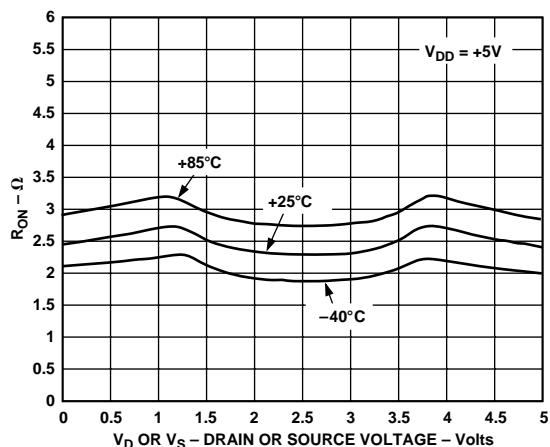


Figure 3. On Resistance as a Function of V_D (V_S) for Different Temperatures $V_{DD} = 5\text{ V}$

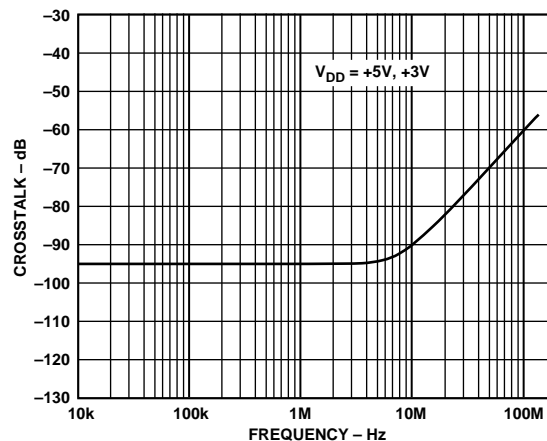


Figure 6. Crosstalk vs. Frequency

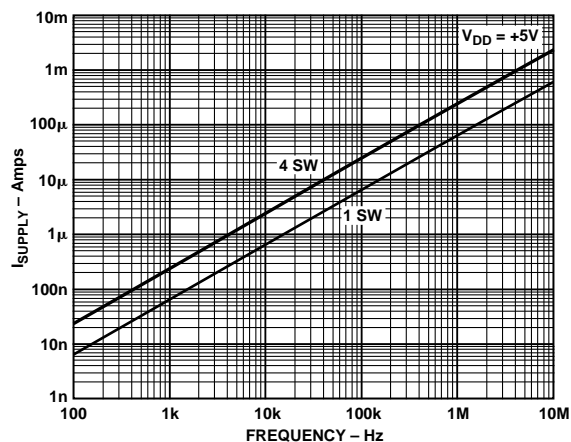


Figure 4. Supply Current vs. Input Switching Frequency

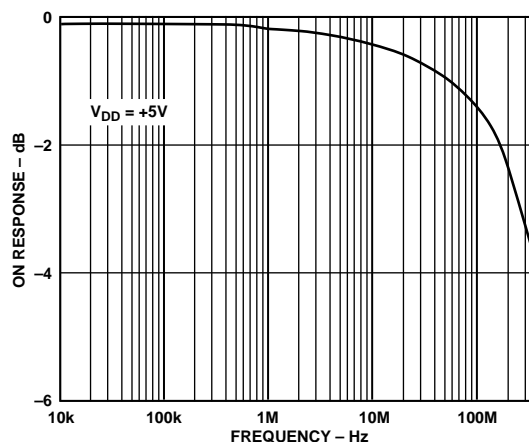


Figure 7. On Response vs. Frequency

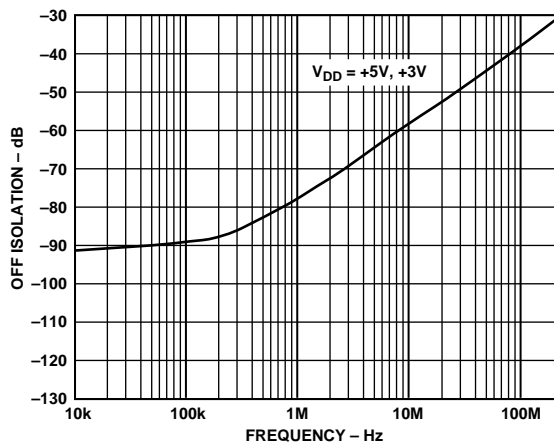


Figure 5. Off Isolation vs. Frequency

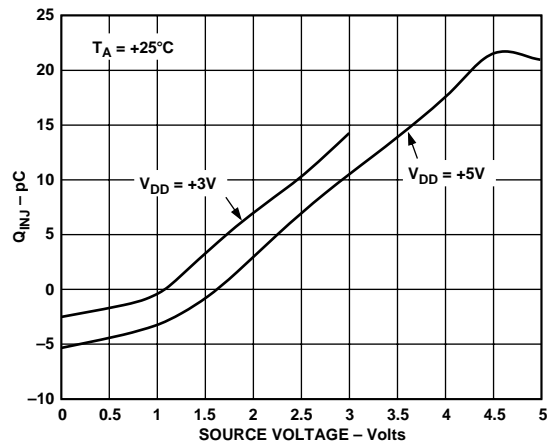


Figure 8. Charge Injection vs. Source Voltage

APPLICATIONS

Figure 9 illustrates a photodetector circuit with programmable gain. An AD820 is used as the output operational amplifier. With the resistor values shown in the circuit, and using different combinations of the switches, gain in the range of 2 to 16 can be achieved.

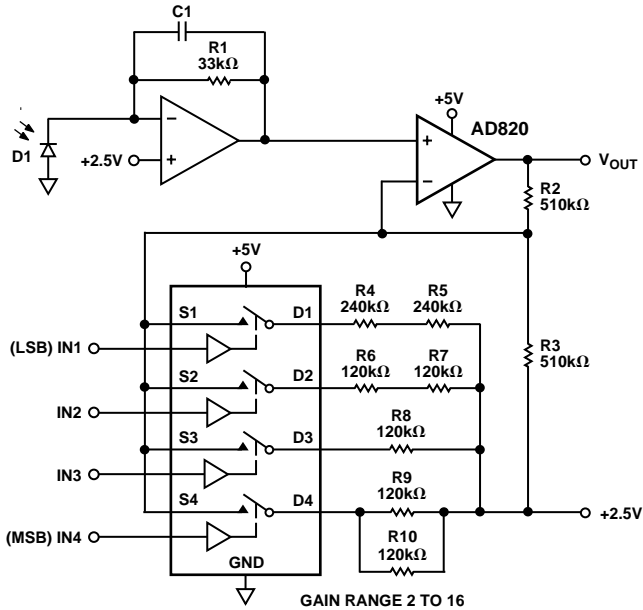
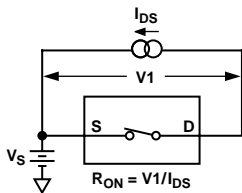
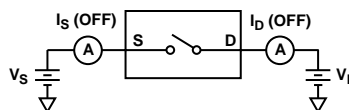


Figure 9. Photodetector Circuit with Programmable Gain

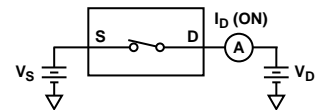
Test Circuits



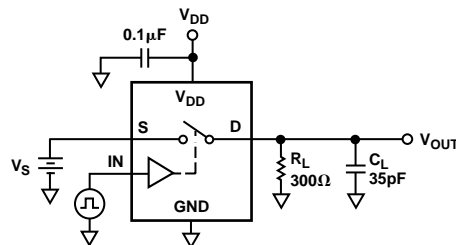
Test Circuit 1. On Resistance



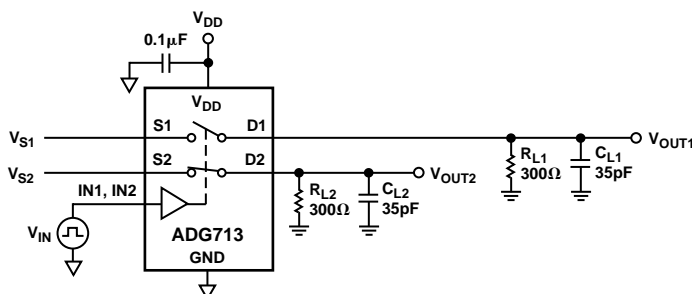
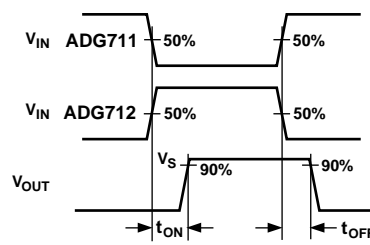
Test Circuit 2. Off Leakage



Test Circuit 3. On Leakage

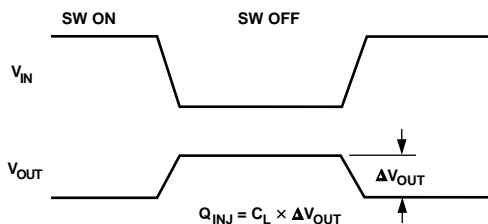


Test Circuit 4. Switching Times

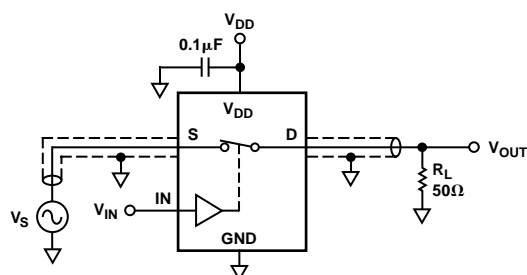


Test Circuit 5. Break-Before-Make Time Delay

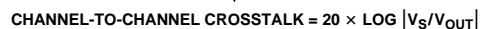
C3385-8-10/98



PRINTED IN U.S.A.



Test Circuit 9. Bandwidth



OUTLINE DIMENSIONS

Dimensions shown in inches and (mm).

16-Lead TSSOP (RU-16)

