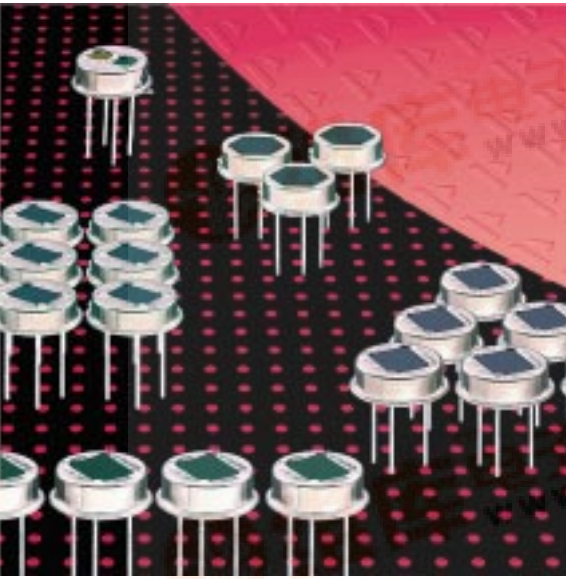


Pyroelectric Infrared Detectors

Single Element Detector LHi 807, 807TC



Element size 1,5x1,5

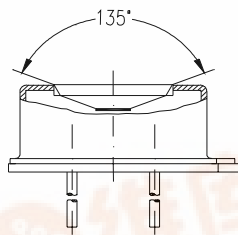
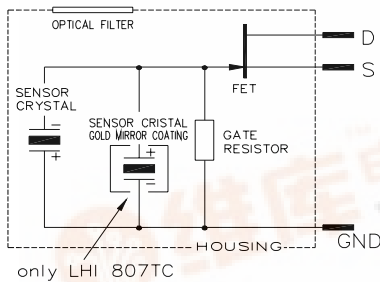
Thermally compensated option

Designed for Gas Analysis applications

The **LHi 807** pyroelectric infrared-detector series is specially designed for gas analysis and monitoring applications. It includes pyroelectric element with FET in source follower connection and is available with a second element shut from radiation for thermal compensation.

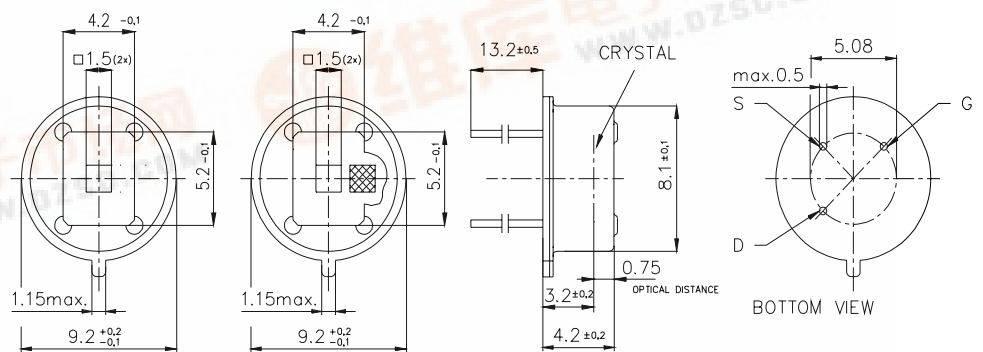
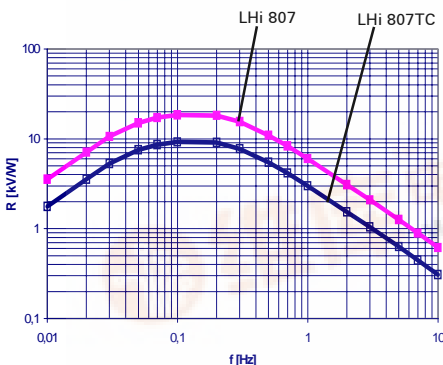
This detector is encapsulated into **TO-5** housing with an infrared window which acts as specific filter. There are many filters available for the selected spectral bandwidths, refer to catalogue envelope for the details.

Parameters	LHi		807/ 807TC	units	condition
	min	typical	max		
Element size	1,5 x 1,5			mm ²	
Responsivity	807	500	640	V/W	100°C, 10 Hz
	807TC	250	320	V/W	100°C, 10 Hz
Noise	807	600	1200	nV _{RMS}	25°C, 10Hz
	807TC	300	600	nV _{RMS}	25°C, 10Hz
Offset Voltage		0,2	1,5	V	R _s =47kΩ, 25°C
NEP		9,4x10 ⁻¹⁰	24x10 ⁻¹⁰	W √Hz	1Hz Bw, 100°C, 1 Hz
D*		6x10 ⁷	16x10 ⁷	cm √Hz/W	1Hz Bw, 100°C, 1 Hz
Output Impedance		5	10	kΩ	R _s =47kΩ, 25°C
Operating Voltage		2	15	V	R _s =47kΩ, 25°C
Field of View, horizontal		135°			unobstructed
vertical		120°			unobstructed
Operating Temp.		-40	85	°C	non permanent
Storage Temperature		-40	85	°C	non permanent



Field of View

Right for modification reserved / WS / 27.12.2000



Dimensions in mm

