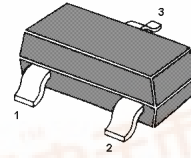


MMUN2211...MMUN2241

[查询"MMUN2211"供应商](#)

NPN Silicon Epitaxial Planar Transistor

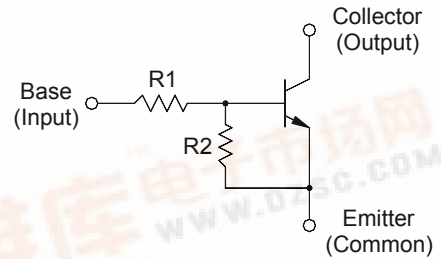
for switching and interface circuit and drive circuit applications



1. Base 2. Emitter 3. Collector
SOT-23 Plastic Package

Resistor Values

Type	R1 (K)	R2 (K)
MMUN2211	10	10
MMUN2212	22	22
MMUN2213	47	47
MMUN2214	10	47
MMUN2215	10	∞
MMUN2216	4.7	∞
MMUN2230	1	1
MMUN2231	2.2	2.2
MMUN2232	4.7	4.7
MMUN2233	4.7	47
MMUN2234	22	47
MMUN2235	2.2	47
MMUN2238	2.2	∞
MMUN2241	100	∞



Absolute Maximum Ratings ($T_a = 25\text{ }^\circ\text{C}$)

Parameter	Symbol	Value	Unit
Collector Base Voltage	V_{CBO}	50	V
Collector Emitter Voltage	V_{CEO}	50	V
Collector Current	I_C	100	mA
Total Power Dissipation	P_{tot}	200	mW
Junction Temperature	T_j	150	$^\circ\text{C}$
Storage Temperature Range	T_s	- 55 to + 150	$^\circ\text{C}$

SEMTECH ELECTRONICS LTD.

(Subsidiary of Sino-Tech International Holdings Limited, a company listed on the Hong Kong Stock Exchange, Stock Code: 724)



ISO/TS 16949 : 2002
Certificate No. 05103

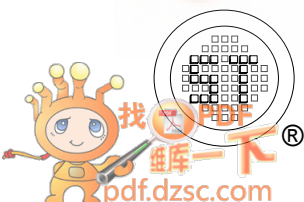


ISO 14001:2004
Certificate No. 7116



ISO 9001:2000
Certificate No. 0506098

Dated : 17/08/2007

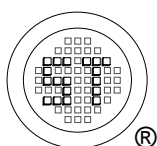


MMUN2211...MMUN2241

[查询"MMUN2211"供应商](#)

Characteristics at $T_a = 25\text{ }^\circ\text{C}$

Parameter	Symbol	Min.	Max.	Unit	
DC Current Gain at $V_{CE} = 10\text{ V}$, $I_C = 5\text{ mA}$	MMUN2211	h_{FE}	35	-	-
	MMUN2212	h_{FE}	60	-	-
	MMUN2213	h_{FE}	80	-	-
	MMUN2214	h_{FE}	80	-	-
	MMUN2215	h_{FE}	160	-	-
	MMUN2216	h_{FE}	160	-	-
	MMUN2230	h_{FE}	3	-	-
	MMUN2231	h_{FE}	8	-	-
	MMUN2232	h_{FE}	15	-	-
	MMUN2233	h_{FE}	80	-	-
	MMUN2234	h_{FE}	80	-	-
	MMUN2235	h_{FE}	80	-	-
	MMUN2238	h_{FE}	160	-	-
	MMUN2241	h_{FE}	160	-	-
Collector Base Cutoff Current at $V_{CB} = 50\text{ V}$	I_{CBO}	-	100	nA	
Collector Emitter Cutoff Current at $V_{CE} = 50\text{ V}$	I_{CEO}	-	500	nA	
Emitter Base Cutoff Current at $V_{EB} = 6\text{ V}$	MMUN2211	I_{EBO}	-	0.5	mA
	MMUN2212	I_{EBO}	-	0.2	mA
	MMUN2213	I_{EBO}	-	0.1	mA
	MMUN2214	I_{EBO}	-	0.2	mA
	MMUN2215	I_{EBO}	-	0.9	mA
	MMUN2216	I_{EBO}	-	1.9	mA
	MMUN2230	I_{EBO}	-	4.3	mA
	MMUN2231	I_{EBO}	-	2.3	mA
	MMUN2232	I_{EBO}	-	1.5	mA
	MMUN2233	I_{EBO}	-	0.18	mA
	MMUN2234	I_{EBO}	-	0.13	mA
	MMUN2235	I_{EBO}	-	0.2	mA
	MMUN2238	I_{EBO}	-	4	mA
	MMUN2241	I_{EBO}	-	0.1	mA
Collector Base Breakdown Voltage at $I_C = 10\text{ }\mu\text{A}$	$V_{(BR)CBO}$	50	-	V	
Collector Emitter Breakdown Voltage at $I_C = 2\text{ mA}$	$V_{(BR)CEO}$	50	-	V	
Collector Emitter Saturation Voltage at $I_C = 10\text{ mA}$, $I_B = 0.3\text{ mA}$ at $I_C = 10\text{ mA}$, $I_B = 5\text{ mA}$ at $I_C = 10\text{ mA}$, $I_B = 1\text{ mA}$	MMUN2230	V_{CEsat}	-	0.25	V
	MMUN2231	V_{CEsat}	-	0.25	V
	MMUN2215	V_{CEsat}	-	0.25	V
	MMUN2216	V_{CEsat}	-	0.25	V
	MMUN2232	V_{CEsat}	-	0.25	V
	MMUN2233	V_{CEsat}	-	0.25	V
	MMUN2234	V_{CEsat}	-	0.25	V
	MMUN2235	V_{CEsat}	-	0.25	V
	MMUN2238	V_{CEsat}	-	0.25	V
	MMUN2238	V_{CEsat}	-	0.25	V



SEMTECH ELECTRONICS LTD.

(Subsidiary of Sino-Tech International Holdings Limited, a company listed on the Hong Kong Stock Exchange, Stock Code: 724)



ISO/TS 16949 : 2002
Certificate No. 05103



ISO 14001:2004
Certificate No. 7116



ISO 9001:2000
Certificate No. 0506098

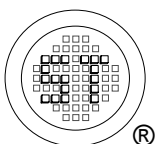
Dated : 17/08/2007

MMUN2211...MMUN2241

[查询"MMUN2211"供应商](#)

Characteristics at $T_a = 25\text{ }^\circ\text{C}$

Parameter	Symbol	Min.	Max.	Unit		
Output Voltage (on) at $V_{CC} = 5\text{ V}$, $V_B = 2.5\text{ V}$, $R_L = 1\text{ K}\Omega$	MMUN2211	V_{OL}	-	0.2	V	
	MMUN2212	V_{OL}	-	0.2	V	
	MMUN2214	V_{OL}	-	0.2	V	
	MMUN2215	V_{OL}	-	0.2	V	
	MMUN2216	V_{OL}	-	0.2	V	
	MMUN2230	V_{OL}	-	0.2	V	
	MMUN2231	V_{OL}	-	0.2	V	
	MMUN2232	V_{OL}	-	0.2	V	
	MMUN2233	V_{OL}	-	0.2	V	
	MMUN2234	V_{OL}	-	0.2	V	
	MMUN2235	V_{OL}	-	0.2	V	
	MMUN2238	V_{OL}	-	0.2	V	
	at $V_{CC} = 5\text{ V}$, $V_B = 3.5\text{ V}$, $R_L = 1\text{ K}\Omega$	MMUN2213	V_{OL}	-	0.2	V
	at $V_{CC} = 5\text{ V}$, $V_B = 5\text{ V}$, $R_L = 1\text{ K}\Omega$	MMUN2241	V_{OL}	-	0.2	V
	Output Voltage (off) at $V_{CC} = 5\text{ V}$, $V_B = 0.5\text{ V}$, $R_L = 1\text{ K}\Omega$ at $V_{CC} = 5\text{ V}$, $V_B = 0.05\text{ V}$, $R_L = 1\text{ K}\Omega$ at $V_{CC} = 5\text{ V}$, $V_B = 0.25\text{ V}$, $R_L = 1\text{ K}\Omega$	MMUN2230	V_{OH}	4.9	-	V
		MMUN2215	V_{OH}	4.9	-	V
MMUN2216		V_{OH}	4.9	-	V	
MMUN2233		V_{OH}	4.9	-	V	
MMUN2238		V_{OH}	4.9	-	V	
MMUN2235		V_{OH}	4.9	-	V	
Input Resistor	MMUN2211	R1	7	13	K Ω	
	MMUN2212	R1	15.4	28.6	K Ω	
	MMUN2213	R1	32.9	61.1	K Ω	
	MMUN2214	R1	7	13	K Ω	
	MMUN2215	R1	7	13	K Ω	
	MMUN2216	R1	3.3	6.1	K Ω	
	MMUN2230	R1	0.7	1.3	K Ω	
	MMUN2231	R1	1.5	2.9	K Ω	
	MMUN2232	R1	3.3	6.1	K Ω	
	MMUN2233	R1	3.3	6.1	K Ω	
	MMUN2234	R1	15.4	28.6	K Ω	
	MMUN2235	R1	1.54	2.86	K Ω	
	MMUN2238	R1	1.54	2.88	K Ω	
	MMUN2241	R1	70	130	K Ω	
Resistor Ratio	MMUN2211/MMUN2212/MMUN2213	R1/R2	0.8	1.2	-	
	MMUN2214	R1/R2	0.17	0.25	-	
	MMUN2215/MMUN2216/MMUN2238	R1/R2	-	-	-	
	MMUN2241	R1/R2	-	-	-	
	MMUN2230/MMUN2231/MMUN2232	R1/R2	0.8	1.2	-	
	MMUN2233	R1/R2	0.055	0.185	-	
	MMUN2234	R1/R2	0.38	0.56	-	
	MMUN2235	R1/R2	0.038	0.056	-	



SEMTECH ELECTRONICS LTD.

(Subsidiary of Sino-Tech International Holdings Limited, a company listed on the Hong Kong Stock Exchange, Stock Code: 724)



ISO/TS 16949 : 2002
Certificate No. 05103



ISO 14001:2004
Certificate No. 7116



ISO 9001:2000
Certificate No. 0506098

Dated : 17/08/2007