

FLAT CABLE

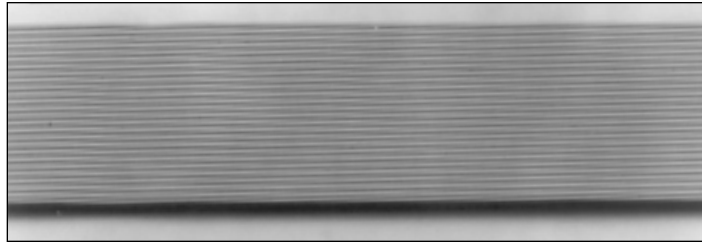
GRAY FLAT CABLE

0.050" CENTERS

300 VOLT
UL STYLE 2651

GRAY FLAT CABLE APPLICATIONS:

- PC Board to PC Board Interconnects
Where Space is a Premium
- Flexible Interconnects Within Computer and Business Machine Cabinetry



CHARACTERISTICS

OPERATING TEMPERATURE:

- -20°C to 105°C

VOLTAGE RATING:

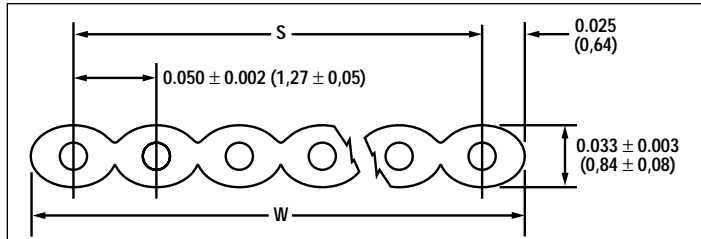
- 300 Volt

COLOR DESCRIPTION:

- Color Code: Gray with Red Stripe on Leading Edge

PRODUCT DESCRIPTION:

- Conductor: Stranded Tinned Copper Conductors on 0.050" (1,27mm) Centers
- Insulation: PVC



28 AWG (0,09mm²), **7/36** (7x0,13mm), Insulation Thickness: **0.010"** (0,25mm)

Alpha Part No.	No. of Conductors	Nominal Overall Width (W)		Nominal Span (S)	
		Inches	mm	Inches	mm
3580/9	9	0.45	11,43	0.40	10,16
3580/10	10	0.50	12,70	0.45	11,43
3580/14	14	0.70	17,78	0.65	16,51
3580/15	15	0.75	19,05	0.70	17,78
3580/16	16	0.80	20,32	0.75	19,05
3580/20	20	1.00	25,40	0.95	24,13
3580/24	24	1.20	30,48	1.15	29,21
3580/25	25	1.25	31,75	1.20	30,48
3580/26	26	1.30	33,02	1.25	31,75
3580/34	34	1.70	43,18	1.65	41,91
3580/37	37	1.85	46,99	1.80	45,72
3580/40	40	2.00	50,80	1.95	49,53
3580/50	50	2.50	63,50	2.45	62,23
3580/60	60	3.00	76,20	2.95	74,93
3580/64	64	3.20	81,28	3.15	80,01

SPECIFICATIONS

- Capacitance: 14 pF/ft (45,9 pF/m) Nom. at 1MHz†
- Propagation Delay: 1.4 ns/ft-0.18 ns (4,6 ns/m-0,18 ns) Rise Time Pulse at 1 MHz†
- Impedance: 105 Ohms, Nom. †
- Crosstalk: Nom. Between 2 Adjacent Signal Lines at 1 ns Rise Time Over 10 ft (3,05m) Length, Near End: 3.2%; Far End: 11.5%†
- UL AWM Style 2651

† Transmission Characteristics: Ground-Signal-Ground-Signal, etc. With All Grounds Common

Recognized Component Underwriters Laboratories Inc. Passes UL VW-1 Flame Test Underwriters Laboratories Inc.

AVAILABILITY

- 100 ft (30,5m) put-ups, may contain multiple lengths



Toll Free: 1-800-52 ALPHA • Telephone: 908-925-8000 • Fax: 908-925-6923
Europe/UK Telephone: +44 (0) 1932 772422 • Europe/UK Fax: +44 (0) 1932 772433

Web Site: www.alphawire.com
Email: info@alphawire.com

300 VOLT
UL STYLE 20932

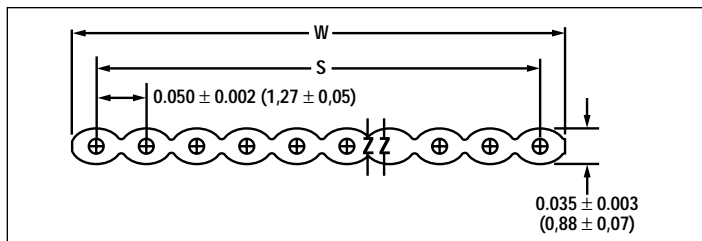
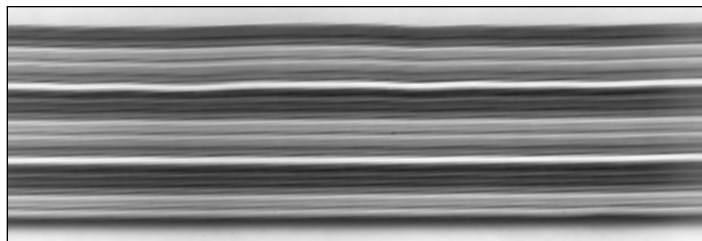
FLAT CABLE

COLOR-CODED FLAT CABLE

0.050" CENTERS

COLOR-CODED FLAT CABLE APPLICATIONS:

- PC Board to PC Board Interconnects
Where Space is a Premium
- Flexible Interconnects Within Computer and Business Machine Cabinetry
- Use Where a High Degree of Flexibility is Required, Such as Drawer Enclosed Electronic Circuitry



CHARACTERISTICS

OPERATING TEMPERATURE:

- -20°C to 105°C

VOLTAGE RATING:

- 300 Volt

COLOR DESCRIPTION:

- Color Code: Brown, Red, Orange, Yellow, Green, Blue, Violet, Gray, White, Black.
- Repeats Beyond 10 Conductors

PRODUCT DESCRIPTION:

- Conductor: Stranded Tinned Copper Conductors on 0.050" (1,27mm) Centers
- Insulation: Thermally-Bonded PVC with Clear PVC Covering

SPECIFICATIONS

- Capacitance: 14 pF/ft (45,9 pF/m) Nom. at 1MHz†
 - Propagation Delay: 1.4 ns/ft-0.18 ns (4,6 ns/m-0,18 ns) Rise Time Pulse at 1 MHz†
 - Impedance: 105 Ohms, Nom. †
 - Crosstalk: Nom. Between 2 Adjacent Signal Lines at 1 ns Rise Time Over 10 ft (3,05m) Length, Near End: 3.2%; Far End: 11.5%†
 - UL AWM Style 20932
- † Transmission Characteristics: Ground-Signal-Ground-Signal, etc. With All Grounds Common

28 AWG (0,09mm²), 7/36 (7x0,13mm), Insulation Thickness: 0.010" (0,25mm)

Alpha Part No.	No. of Conductors	Nominal Overall Width (W) Inches	mm	Nominal Span (S) Inches	mm
3583/9	9	0.45	11,43	0.40	10,16
3583/10	10	0.50	12,70	0.45	11,43
3583/14	14	0.70	17,78	0.65	16,51
3583/15	15	0.75	19,05	0.70	17,78
3583/16	16	0.80	20,32	0.75	19,05
3583/20	20	1.00	25,40	0.95	24,13
3583/24	24	1.20	30,48	1.15	29,21
3583/25	25	1.25	31,75	1.20	30,48
3583/26	26	1.30	33,02	1.25	31,75
3583/34	34	1.70	43,18	1.65	41,91
3583/37	37	1.85	46,99	1.80	45,72
3583/40	40	2.00	50,80	1.95	49,53
3583/50	50	2.50	63,50	2.45	62,23
3583/60	60	3.00	76,20	2.95	74,93
3583/64	64	3.20	81,28	3.15	80,01

Recognized Component
Underwriters Laboratories Inc.

Passes UL VW-1 Flame Test
Underwriters Laboratories Inc.

AVAILABILITY

- 100 ft (30,5m) put-ups, may contain multiple lengths

Web Site: www.alphawire.com
Email: info@alphawire.com

Toll Free: 1-800-52 ALPHA • Telephone: 908-925-8000 • Fax: 908-925-6923
Europe/UK Telephone: +44 (0) 1932 772422 • Europe/UK Fax: +44 (0) 1932 772433



335

FLAT CABLE

SHIELDED ROUND-TO-FLAT CABLE

0.050" CENTERS

UL TYPE CL2
UL STYLE 20381
150 VOLT

SHIELDED ROUND-TO-FLAT CABLE APPLICATIONS:

- For Routing in Cramped Spaces Where Flat Cable is Required and a Round Shape is More Workable



CHARACTERISTICS

OPERATING TEMPERATURE:

- 20°C to 105°C

VOLTAGE RATING:

- 300 Volt – AWM
- 150 Volt – CL2

COLOR DESCRIPTION:

- Color Code: Gray with Red Stripe on Leading Edge

PRODUCT DESCRIPTION:

- Conductor: Stranded Tinned Copper Conductors on 0.050" (1,27mm) Centers
- Insulation: PVC
- Shielding: Aluminum/Polyester with Tinned Copper Braid (90% Coverage)
- Flat Cable Termination are 0.75" in Length and Occurs Every 1.5"
- Black PVC Jacket Thickness: 0.030" (0,08mm)

28 AWG (0,09mm²), 7/36 (7x0,13mm), Insulation Thickness: 0.010" (0,25mm)

Alpha Part No.	No. of Conductors	Nominal Diameter		Nominal Width	
		Inches	mm	Inches	mm
3585/25	25	0.34	8,64	1.20	30,48
3585/26	26	0.39	9,91	1.65	41,91
3585/40	40	0.40	10,20	1.95	49,53
3585/50	50	0.46	11,70	2.45	62,23

SPECIFICATIONS

- Capacitance: 24 pF/ft (69 pF/m) at 1MHz Nom.
- Impedance: 70 Ohms Nom.
- UL Type CL2
- UL AWM Style 20381

UL LISTED  Passes UL 910 Flame Test Underwriters Laboratories Inc.

AVAILABILITY

- 100 ft (30,5m) put-ups, may contain multiple lengths



Toll Free: 1-800-52 ALPHA • Telephone: 908-925-8000 • Fax: 908-925-6923
Europe/UK Telephone: +44 (0) 1932 772422 • Europe/UK Fax: +44 (0) 1932 772433

Web Site: www.alphawire.com
Email: info@alphawire.com