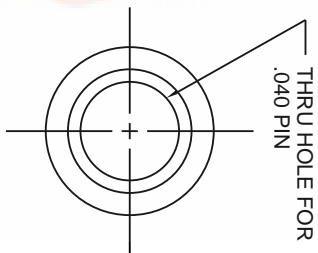
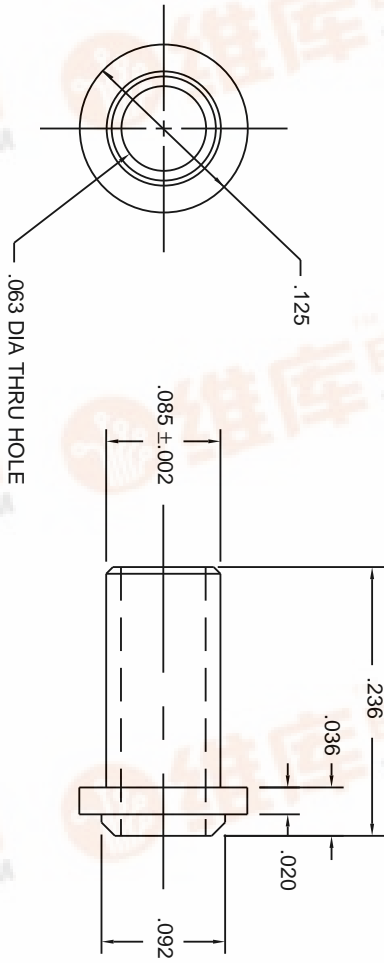


THIS DOCUMENT AND THE DATA DISCLOSED  
HEREIN OR HERewith IS NOT TO BE REPRODUCED,  
USED, OR DISCLOSED IN WHOLE OR IN PART  
TO ANYONE WITHOUT PERMISSION OF VICOR CORP.



NOTES:

1. MATERIAL: BRASS QQ-B-626 ALLOY 360 1/2 HARD, ELECTRO-TIN PER MIL-T-10727, TYPE I WITH BERYLLIUM COPPER SPRING INSERT CAPTIVATED.
2. CONCORD P/N 09-9002-1-04 OR APPROVED EQUIV.

DRAWN:	
CHECKED:	
APPD:	
ALL DIMENSIONS ARE IN INCHES (MILLIMETERS)	
DO NOT SCALE DRAWING	
NEXT ASSY:	

DRAWING NO.		REV
01827		2
SHEET		OF



Ø.040 P.C.  
PIN SOCKET

TOLERANCES  
(EXCEPT AS NOTED)  
XX ± .01  
XXX ± .005  
FRACT ± 1/64  
ANGLES ± 1.0

SCALE: 10X

