

Blade Terminal & Special Purpose Fuses

482 Series Alarm Indicating Fuseholder

The Alarm Indicating Fuseholder is designed for use with the Littelfuse 481 Alarm Fuse. It is designed to accept other manufacturer's replacement fuses as well.

• Ideal for telecommunications and control panel circuits.

The fuseholder is available in three versions:

PCB Mount: Can be soldered directly to a printed circuit board. Rated up to 15 amperes. Available in single pole or gangable up to 20 poles. Fuseholder is keyed to prevent insertion of 20 ampere fuse.

Panel Mount – 20A: Available in a single pole version rated up to 20 amperes. Large leads for wire attachment.

Panel Mount – 15A: 15 ampere gangable version of fuseholder is keyed to prevent insertion of 20 ampere fuse.

AGENCY APPROVALS: Recognized under the Components Program of Underwriters Laboratories and the Components Acceptance Program of CSA.

AGENCY FILE NUMBERS: UL E14721, CSA LR 29862

SPECIFICATIONS:

PCB Mount and Panel Mount – 15A: Rated at 15 amperes up to 125 VAC/VDC

Body Material: Thermoplastic

Fuse Terminals: Tin-plated Beryllium Copper

Alarm Terminal: Tin-plated Brass

Operating Temperature: -55°C to + 125°C

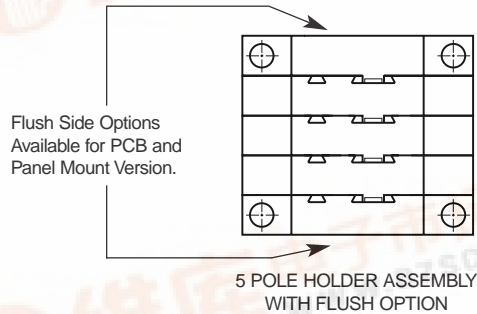
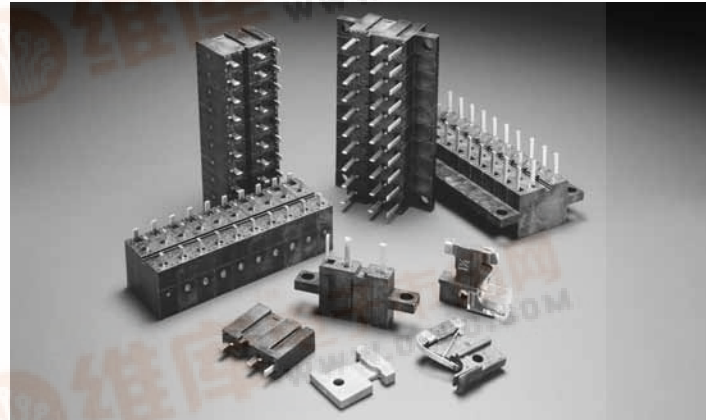
Panel Mount – 20A: Rated at 20 amperes up to 125 VAC/VDC

Body Material: Black Phenolic

Fuse Terminals: Tin-plated Beryllium Copper

Alarm Terminal: Tin-plated Brass

Operating Temperature: -40°C to + 85°C

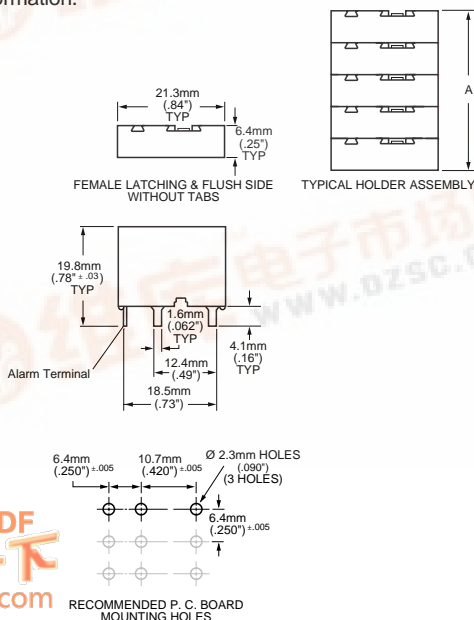


12
BLADE TERMINAL AND SPECIAL PURPOSE FUSES

482 Series PCB Mount Fuseholder



PCB Mount – 15A: 15 ampere gangable version of fuseholder is keyed to prevent insertion of 20 ampere fuse. Please contact Littelfuse for ordering information.



ORDERING INFORMATION: PCB Mount

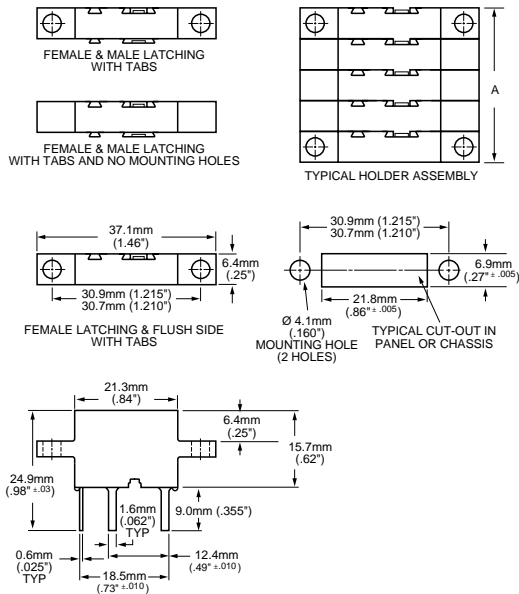
Catalog Number PCB Mount	Catalog Number PCB Mount Flush	Type	Length (A)
0482 0001ZXB	0482 0001ZXBF	1 Pole	6.40mm (.25")
0482 0002ZXB	0482 0002ZXBF	2 Pole	12.80mm (.50")
0482 0003ZXB	0482 0003ZXBF	3 Pole	19.05mm (.75")
0482 0004ZXB	0482 0004ZXBF	4 Pole	25.40mm (1.0")
0482 0005ZXB	0482 0005ZXBF	5 Pole	31.75mm (1.25")
0482 0006ZXB	0482 0006ZXBF	6 Pole	38.10mm (1.50")
0482 0007ZXB	0482 0007ZXBF	7 Pole	44.45mm (1.75")
0482 0008ZXB	0482 0008ZXBF	8 Pole	50.80mm (2.00")
0482 0009ZXB	0482 0009ZXBF	9 Pole	57.15mm (2.25")
0482 00010ZXB	0482 00010ZXBF	10 Pole	63.50mm (2.50")
0482 00011ZXB	0482 00011ZXBF	11 Pole	69.85mm (2.75")
0482 00012ZXB	0482 00012ZXBF	12 Pole	76.20mm (3.00")
0482 00013ZXB	0482 00013ZXBF	13 Pole	82.55mm (3.25")
0482 00014ZXB	0482 00014ZXBF	14 Pole	88.90mm (3.50")
0482 00015ZXB	0482 00015ZXBF	15 Pole	95.25mm (3.75")
0482 00016ZXB	0482 00016ZXBF	16 Pole	101.60mm (4.00")
0482 00017ZXB	0482 00017ZXBF	17 Pole	107.95mm (4.25")
0482 00018ZXB	0482 00018ZXBF	18 Pole	114.30mm (4.50")
0482 00019ZXB	0482 00019ZXBF	19 Pole	120.65mm (4.75")
0482 00020ZXB	0482 00020ZXBF	20 Pole	127.00mm (5.00")



Blade Terminal & Special Purpose Fuses

482 Series Panel Mount Fuseholder

Panel Mount – 15A: 15 ampere gangable version of fuseholder is keyed to prevent insertion of 20 ampere fuse. Please contact Littelfuse for ordering information.



ORDERING INFORMATION: Panel Mount –15A

Catalog Number Panel Mount	Catalog Number Panel Mount Flush	Type	Length (A)
0482 0001ZXP	0482 0001ZXP	1 Pole	6.40mm (.25")
0482 0002ZXP	0482 0002ZXP	2 Pole	12.80mm (.50")
0482 0003ZXP	0482 0003ZXP	3 Pole	19.05mm (.75")
0482 0004ZXP	0482 0004ZXP	4 Pole	25.40mm (1.0")
0482 0005ZXP	0482 0005ZXP	5 Pole	31.75mm (1.25")
0482 0006ZXP	0482 0006ZXP	6 Pole	38.10mm (1.50")
0482 0007ZXP	0482 0007ZXP	7 Pole	44.45mm (1.75")
0482 0008ZXP	0482 0008ZXP	8 Pole	50.80mm (2.00")
0482 0009ZXP	0482 0009ZXP	9 Pole	57.15mm (2.25")
0482 0010ZXP	0482 0010ZXP	10 Pole	63.50mm (2.50")
0482 0011ZXP	0482 0011ZXP	11 Pole	69.85mm (2.75")
0482 0012ZXP	0482 0012ZXP	12 Pole	76.20mm (3.00")
0482 0013ZXP	0482 0013ZXP	13 Pole	82.55mm (3.25")
0482 0014ZXP	0482 0014ZXP	14 Pole	88.90mm (3.50")
0482 0015ZXP	0482 0015ZXP	15 Pole	95.25mm (3.75")
0482 0016ZXP	0482 0016ZXP	16 Pole	101.60mm (4.00")
0482 0017ZXP	0482 0017ZXP	17 Pole	107.95mm (4.25")
0482 0018ZXP	0482 0018ZXP	18 Pole	114.30mm (4.50")
0482 0019ZXP	0482 0019ZXP	19 Pole	120.65mm (4.75")
0482 0020ZXP	0482 0020ZXP	20 Pole	127.00mm (5.00")

482 Series 20A Panel Mount Fuseholder

Panel Mount – 20A: The 20 ampere single pole holder is designed to accept all fuse ratings up to 20 amperes. 20 ampere fuseholders should be spaced 12.7mm (0.50) apart when loaded to maximum capacity, center to center to insure proper heat dissipation under normal operation. Heatsinking may be required for operation in higher ambient temperatures or alternate configurations.

AGENCY APPROVALS: Recognized under the Components Program of Underwriters Laboratories and the Components Acceptance Program of CSA.

AGENCY FILE NUMBERS: UL E71611, CSA LR 29862

SPECIFICATIONS:

Panel Mount – 20A: Rated at 20 amperes up to 125 VAC/VDC

Body Material: Black Phenolic

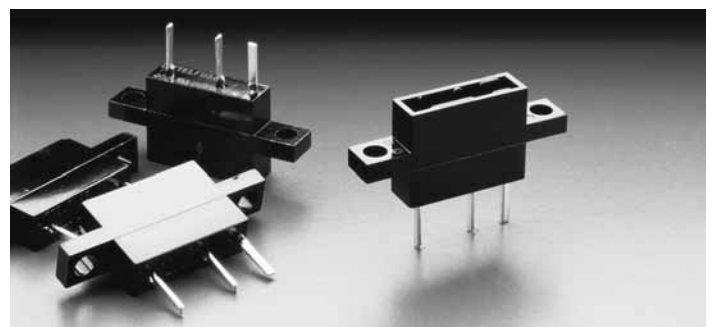
Fuse Terminals: Tin-plated Copper Alloy

Alarm Terminal: Tin-plated Copper Alloy

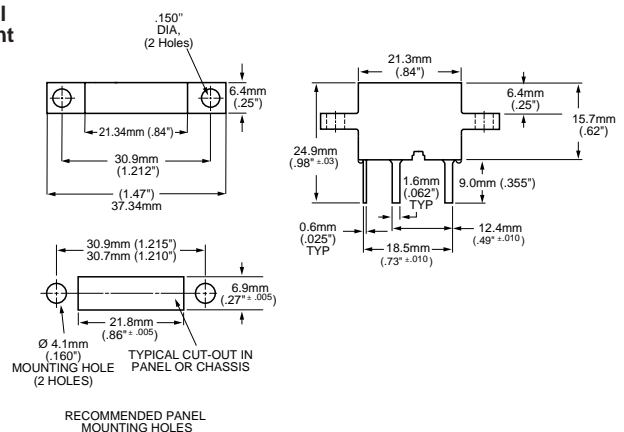
Operating Temperature: -40° to +85°C

ORDERING INFORMATION:

CATALOG NUMBER: 0482 2001ZXP



Panel Mount



* For additional terminal lengths please contact Littelfuse.

RECOMMENDED PANEL MOUNTING HOLES