

# Blade Terminal & Special Purpose Fuses

Low Voltage

## RoHS Cable Pro® Cable Protector 496 Series



### ELECTRICAL CHARACTERISTICS:

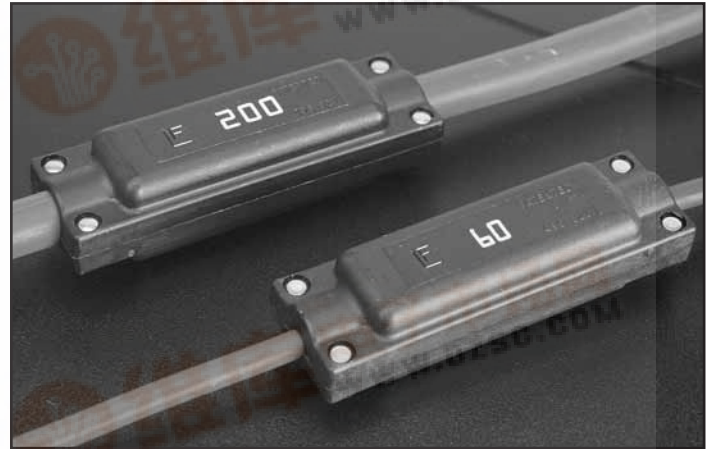
% of Ampere Rating	Opening Time
100%	100 hours, <b>Minimum</b>
135%	120 sec., <b>Min.</b> ; 1800 sec., <b>Max.</b>
200%	10 sec., <b>Min.</b> ; 300sec., <b>Max.</b>
350%	1 sec., <b>Min.</b> ; 15 sec., <b>Max.</b>
600%	0.3 sec., <b>Min.</b> ; 5 sec., <b>Max.</b>

**CABLE TYPE:** SAE J1127(4 & 6 AWG) & SAE J1128(8 AWG).

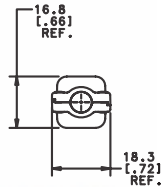
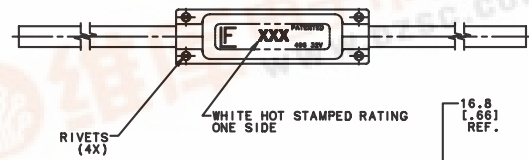
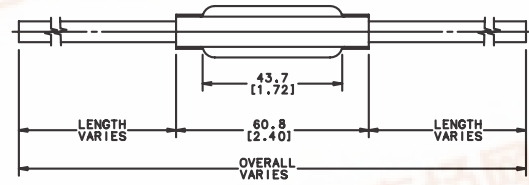
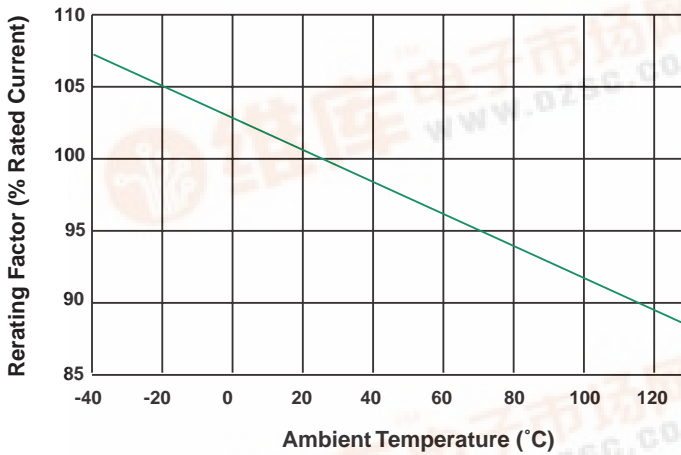
**INTERRUPTING RATINGS:** 2000 amperes @ 32 VDC

**ENVIRONMENTAL SPECIFICATIONS:**

Operating Temperature Range: -40°C to +125°C



Temperature Derating Curve



### ORDERING INFORMATION:

Catalog Number	Ampere Rating	Wire Size	Typical Voltage Drop at Rated Current (mV)*	Nominal Cold Resistance (mΩ)*
0496 080	80	8mm <sup>2</sup> (8AWG)	117.0	1.188
0496 100	100	8mm <sup>2</sup> (8AWG)	119.9	0.937
0496 125	125	13mm <sup>2</sup> (6AWG)	104.6	0.697
0496 150	150	19mm <sup>2</sup> (4AWG)	102.1	0.555
0496 175	175	19mm <sup>2</sup> (4AWG)	105.4	0.473
0496 200	200	19mm <sup>2</sup> (4AWG)	97.6	0.374
0496 060	60	5mm <sup>2</sup> (10AWG)	132.8	1.770

\* NOMINAL COLD RESISTANCE AND TYPICAL VOLTAGE DROP AT RATED CURRENT IS MEASURED AT THE ENDS OF TWO 80.0mm(3.15") CABLES.

