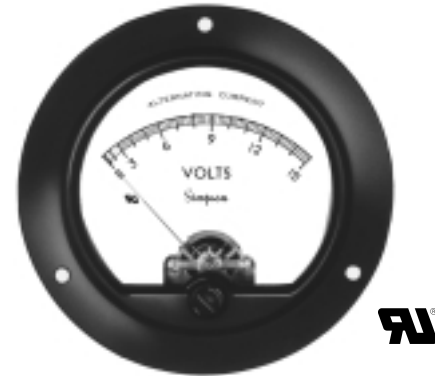




AC Voltage Round Style

- $\pm 2\%$ Full Scale Accuracy ($\pm 3\%$ F.S. for Rectifier)
- UL Recognized
- Phenolic Cases and Glass Windows
- Two Popular Sizes: 2-1/2", 3-1/2"



For industrial or commercial applications, the Round style panel meter offers maximum readability and $\pm 2\%$ full scale (F.S.) accuracy (3% full scale for rectifier type). With a rugged black phenolic case and glass window for optimum viewing, the Round style meter is one of our most popular choices for tough environmental applications. AC units have either iron-vane type or rectifier type movements and are calibrated at 60Hz. Iron-vane type voltage meters have a frequency range of 25 to 125Hz (for $\pm 1\%$ deviation from value at 60Hz). Calibration to 800Hz is available on special order (All rectifier types have 25Hz to 10KHz range). Two popular sizes of 2-1/2" and 3-1/2" are available to measure various voltage ranges. This style meter is ideal for many other electrical functions. See the "Function Reference Table."

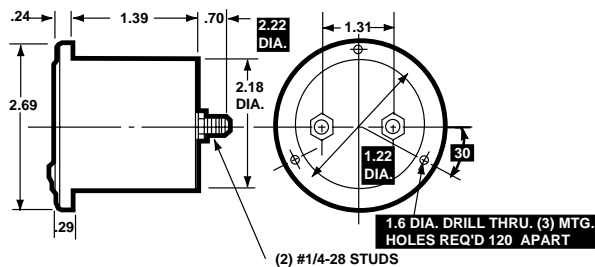
Model Number	Size	Meter Movement
155	2-1/2"	Iron-Vane
145*	2-1/2"	Rectifier
45	3-1/2"	Rectifier
55	3-1/2"	Iron-Vane

* Special Order

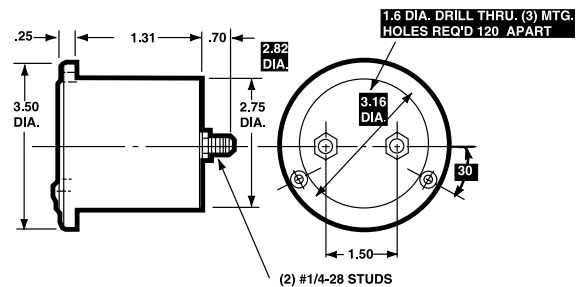
Dimensions and Compatibility

2-1/2"-Models 155 and 145

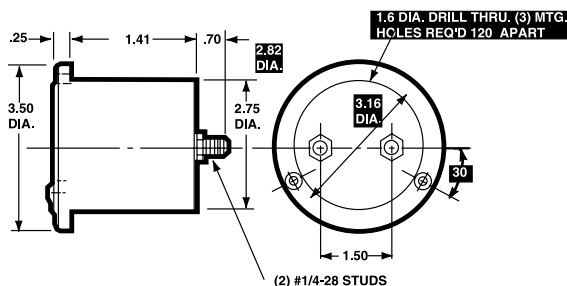
1 = Panel Meter Cut-out Dimensions



3-1/2"-Model 45



3-1/2"-Model 55



Compatibility Reference Table

Manufacturer	Size/Model	
	2-1/2"	3-1/2"
Beede	501	310
Hoyte	552	584
Triplet S Series	231-S	331-S
Weston 200 and 300	204	304

Specifications

Accuracy:	±2% F.S. (Iron-vane); ±3% F.S. (Rectifier)
Movement:	Models 55, 155: Iron-vane, magnetically damped Models 45, 145: Rectifier type, self-shielding
Suspension:	Pivot and jewel
Tracking:	±3%
Shielding:	Calibration is unaffected by magnetic panel mounting.
Response Time:	1.5 seconds maximum
Overload (1 sec.):	10 times F.S.
Overload (Continuous):	1.5 times F.S.
Repeatability:	2%
Dial:	Sharp clear scale. Each dial arc is calibrated to track the specific type of movement used.
Case:	High density black phenolic

Resistance:	±15%
Operating Temperature:	-4°F to +149°F (-20°C to +65°C)
Pointer:	Spade pointer, with black matte finish
Scale Length:	Model 45: 2.5" (63.5mm) Model 55: 2.3" (58.4mm) Model 145: 1.8" (45.7mm) Model 155: 1.6" (40.6mm)
Net Weight:	Model 45: 8oz (0.20kg) Models 55 & 155: 5oz (0.14kg) Model 145: 7oz (0.20kg)

Ordering Information

AC Voltage Meters Iron-Vane Type Movement

Range	Approx. Impedance (ohms) @ 60Hz	Model/Size and Catalog Number	
		2-1/2" Model 155	3-1/2" Model 55
0-1.5	3	< >	< >
0-3	12	< >	< >
0-5	33	< >	08410
0-10	133	< >	08420
0-15	300	< >	08430
0-25	833	< >	08440
0-50	3,333	09290	08450
0-100	16,166	< >	08460
0-150	25,000	09310	08470
0-250	41,166	09320	08480
0-300	50,000	09330	08490
0-500	83,333	09340†	08500†
0-750	125,000	< >	08510†
0-1000	166,666	< >	< >

AC Voltage Meters Rectifier Type, Self-Shielding

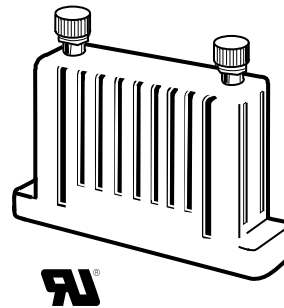
Range	Approx. Impedance (ohms) @ 60Hz	Model/Size and Catalog Number	
		2-1/2" Model 145	3-1/2" Model 45
0-1	2000 ohms per volt	< >	< >
0-3		< >	< >
0-5		< >	< >
0-10		< >	< >
0-15		< >	< >
0-50		< >	< >
0-100		< >	< >
0-150		< >	08010
0-300		< >	< >

† External multipliers, Model 183 are furnished on AC meters having a range of 500 volts or higher. All others have self-contained multipliers.

<> Available on special order.

Accessories

Model 183 Multiplier



The Model 183 external multiplier enables an iron-vane type voltage meter to monitor up to 1000 AC volts. An external multiplier is used with a 150 AC voltage meter that is scaled proportionally to your measurement range. Simpson's AC meters having a range of 500 volts or higher are furnished with the Model 183. Simpson's external multipliers are available for immediate delivery from your local distributor. Other intermediate ranges are available on special order.

Ordering Information

AC Volts 166 Ohms/Volt

Range	Approx. Impedance (Ohms) @ 60 Hz	Volt Drop	Meter Volt Drop	Catalog Number
0-500	58,333	350	150	08562
0-600	75,000	450	150	08563
0-750	100,000	600	150	08564
0-1000	141,666	850	150	08565

Function Reference Table

For your convenience, the table below lists Round models for other electrical monitoring functions with page number reference.

Function	Section	Page
AC Current	E	17
DC Current	E	57
DC Voltage	E	77
Watts	E	109