

## 100EL11 5V ECL 1:2 Differential Fanout Buffer

### General Description

The 100EL11 is a 5V 1:2 differential fanout buffer. One differential input signal is fanned out to two identical differential outputs. By supplying a constant reference level to one input pin a single ended input condition is created.

With inputs open or both inputs at  $V_{EE}$  the differential Q outputs default LOW and  $\bar{Q}$  outputs default HIGH.

The 100 series is temperature compensated.

### Features

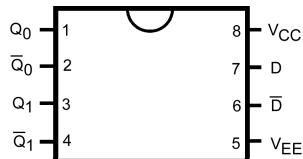
- Typical propagation delay of 265 ps
- Typical  $I_{EE}$  of 26 mA
- Typical Skew of 5 ps between outputs
- Internal pull-down resistors on inputs
- Fairchild MSOP-8 package is a drop-in replacement to ON TSSOP-8
- Meets or exceeds JEDEC specification EIA/JESD78 IC latch-up test
- Moisture Sensitivity Level 1
- ESD Performance:
  - Human Body Model > 2000V
  - Machine Model > 200V

### Ordering Code:

| Order Number            | Package Number | Product Code Top Mark | Package Description   |
|-------------------------|----------------|-----------------------|---|
| 100EL11M                | M08A           | KEL11                 | 8-Lead Small Outline Integrated Circuit (SOIC), JEDEC MS-012, 0.150" Narrow |
| 100EL11M8 (Preliminary) | MA08D          | KL11                  | 8-Lead Molded Small Outline Package (MSOP), JEDEC MO-187, 3.0mm Wide        |

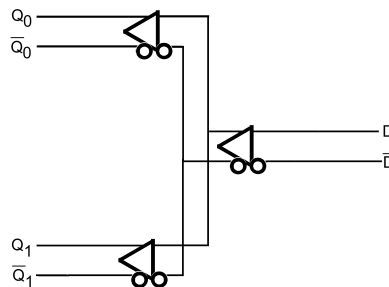
Devices also available in Tape and Reel. Specify by appending suffix letter "X" to the ordering code.

### Connection Diagram



Top View

### Logic Diagram



### Pin Descriptions

| Pin Name                         | Description      |
|----------------------------------|------------------|
| $Q_0, \bar{Q}_0, Q_1, \bar{Q}_1$ | ECL Data Outputs |
| $D, \bar{D}$                     | ECL Data Inputs  |
| $V_{CC}$                         | Positive Supply  |
| $V_{EE}$                         | Negative Supply  |

**Absolute Maximum Ratings** (Note 1)

|  |                 |
|--|-----------------|
| PECL Supply Voltage ( $V_{CC}$ ) $V_{EE} = 0V$ | 0.0V to +8.0V   |
| NECL Supply Voltage ( $V_{EE}$ ) $V_{CC} = 0V$ | 0.0V to -8.0V   |
| PECL DC Input Voltage ( $V_i$ ) $V_{EE} = 0V$  | 0.0V to +6.0V   |
| NECL DC Input Voltage ( $V_i$ ) $V_{CC} = 0V$  | 0.0V to -6.0V   |
| DC Output Current ( $I_{OUT}$ )                |                 |
| Continuous                                     | 50 mA           |
| Surge  | 100 mA          |
| Storage Temperature ( $T_{STG}$ )              | -65°C to +150°C |

**Recommended Operating Conditions**

|  |                             |
|--|-----------------------------|
| PECL Power Supply                        | $V_{CC} = 4.2V$ to $5.5V$   |
| ( $V_{EE} = 0V$ )                        |                             |
| NECL Power Supply                        | $V_{EE} = -4.2V$ to $-5.5V$ |
| ( $V_{CC} = 0V$ )                        |                             |
| Free Air Operating Temperature ( $T_A$ ) | -40°C to +85°C              |

**Note 1:** The "Absolute Maximum Ratings" are those values beyond which the safety of the device cannot be guaranteed. The device should not be operated at these limits. The parametric values defined in the Electrical Characteristics tables are not guaranteed at the absolute maximum rating. The "Recommended Operating Conditions" table will define the conditions for actual device operation.

**100EL PECL DC Electrical Characteristics**  $V_{CC} = 5.0V$ ;  $V_{EE} = 0.0V$  (Note 2)

| Symbol      | Parameter  | -40°C |      |      | 25°C |      |      | 85°C |      |      | Units   |
|-------------|--|-------|------|------|------|------|------|------|------|------|---------|
|             |  | Min   | Typ  | Max  | Min  | Typ  | Max  | Min  | Typ  | Max  |         |
| $I_{EE}$    | Power Supply Current   |       | 26   | 31   |      | 26   | 31   |      | 30   | 36   | mA      |
| $V_{OH}$    | Output HIGH Voltage (Note 3)                                 | 3915  | 3995 | 4120 | 3975 | 4045 | 4120 | 3975 | 4050 | 4120 | mV      |
| $V_{OL}$    | Output LOW Voltage (Note 3)                                  | 3170  | 3305 | 3445 | 3190 | 3295 | 3380 | 3190 | 3295 | 3380 | mV      |
| $V_{IH}$    | Input HIGH Voltage (Single Ended)                            | 3835  |      | 4120 | 3835 |      | 4120 | 3835 |      | 4120 | mV      |
| $V_{IL}$    | Input LOW Voltage (Single Ended)                             | 3190  |      | 3525 | 3190 |      | 3525 | 3190 |      | 3525 | mV      |
| $V_{IHCMR}$ | Input HIGH Voltage Common Mode Range (Differential) (Note 4) | 2.5   |      | 4.6  | 2.5  |      | 4.6  | 2.5  |      | 4.6  | V       |
| $I_{IH}$    | Input HIGH Current (Note 5)                                  |       |      | 150  |      |      | 150  |      |      | 150  | $\mu A$ |
| $I_{IL}$    | Input LOW Current (Note 5)                                   | 0.5   |      |      | 0.5  |      |      | 0.5  |      |      | $\mu A$ |

**Note 2:** Input and output parameters vary 1 to 1 with  $V_{CC}$ .  $V_{EE}$  can vary +0.8V/-0.5V.

**Note 3:** Outputs are terminated through a 50 $\Omega$  Resistor to  $V_{CC} - 2.0V$ .

**Note 4:**  $V_{IHCMR}$  minimum varies 1 to 1 with  $V_{EE}$ .  $V_{IHCMR}$  maximum varies 1 to 1 with  $V_{CC}$ . The  $V_{IHCMR}$  range is referenced to the most positive side of the differential input signal. Normal operation is obtained if the HIGH level falls within the specified range and the peak-to-peak voltage lies between  $V_{PPMIN}$  and 1V.

**Note 5:** Absolute value of the input HIGH and LOW current should not exceed the absolute value of the stated Min or Max specification.

**Note:** Devices are designed to meet the DC specifications after thermal equilibrium has been established. Circuit is tested with air flow greater than 500LFPM maintained.

## 100EL NECL DC Electrical Characteristics $V_{CC} = 0.0V$ ; $V_{EE} = -5.0V$ (Note 6)

| Symbol      | Parameter  | -40°C |       |       | 25°C  |       |       | 85°C  |       |       | Units   |
|-------------|--|-------|-------|-------|-------|-------|-------|-------|-------|-------|---------|
|             |  | Min   | Typ   | Max   | Min   | Typ   | Max   | Min   | Typ   | Max   |         |
| $I_{EE}$    | Power Supply Current   |       | 26    | 31    |       | 26    | 31    |       | 30    | 36    | mA      |
| $V_{OH}$    | Output HIGH Voltage (Note 7)                                 | -1085 | -1005 | -880  | -1025 | -955  | -880  | -1025 | -955  | -880  | mV      |
| $V_{OL}$    | Output LOW Voltage (Note 7)                                  | -1830 | -1695 | -1555 | -1810 | -1705 | -1620 | -1810 | -1705 | -1620 | mV      |
| $V_{IH}$    | Input HIGH Voltage (Single Ended)                            | -1165 |       | -880  | -1165 |       | -880  | -1165 |       | -880  | mV      |
| $V_{IL}$    | Input LOW Voltage (Single Ended)                             | -1810 |       | -1475 | -1810 |       | -1475 | -1810 |       | -1475 | mV      |
| $V_{IHCMR}$ | Input HIGH Voltage Common Mode Range (Differential) (Note 8) | -2.5  |       | -0.4  | -2.5  |       | -0.4  | -2.5  |       | -0.4  | V       |
| $I_{IH}$    | Input HIGH Current (Note 9)                                  |       |       | 150   |       |       | 150   |       |       | 150   | $\mu A$ |
| $I_{IL}$    | Input LOW Current (Note 9)                                   | 0.5   |       |       | 0.5   |       |       | 0.5   |       |       | $\mu A$ |

**Note 6:** Input and output parameters vary 1 to 1 with  $V_{CC}$ .  $V_{EE}$  can vary +0.8V/-0.5V.

**Note 7:** Outputs are terminated through a 50 $\Omega$  Resistor to  $V_{CC} - 2.0V$ .

**Note 8:**  $V_{IHCMR}$  minimum varies 1 to 1 with  $V_{EE}$ .  $V_{IHCMR}$  maximum varies 1 to 1 with  $V_{CC}$ . The  $V_{IHCMR}$  range is referenced to the most positive side of the differential input signal. Normal operation is obtained if the HIGH level falls within the specified range and the peak-to-peak voltage lies between  $V_{PPMIN}$  and 1V.

**Note 9:** Absolute value of the input HIGH and LOW current should not exceed the absolute value of the stated Min or Max specification.

**Note:** Devices are designed to meet the DC specifications after thermal equilibrium has been established. Circuit is tested with air flow greater than 500LFPM maintained.

## AC Electrical Characteristics $V_{CC} = 5V$ ; $V_{EE} = 0.0V$ or $V_{CC} = 0.0V$ ; $V_{EE} = -5V$ (Note 10)(Note 11)

| Symbol                | Parameter   | -40°C |     |      | 25°C |     |     | 85°C |     |      | Units | Figure Number |
|-----------------------|---|-------|-----|------|------|-----|-----|------|-----|------|-------|---------------|
|                       |   | Min   | Typ | Max  | Min  | Typ | Max | Min  | Typ | Max  |       |               |
| $f_{MAX}$             | Maximum Toggle Frequency                                  |       | TBD |      |      | TBD |     |      | TBD |      | GHz   |               |
| $t_{PLH}$ , $t_{PHL}$ | Propagation Delay to Output                               | 135   | 260 | 385  | 190  | 265 | 340 | 215  | 290 | 365  | ps    | Figure 1      |
| $t_{SKEW}$            | Within Device Skew (Note 12)<br>Duty Cycle Skew (Note 13) |       | 5   |      |      | 5   | 20  |      | 5   | 20   | ps    |               |
| $t_{JITTER}$          | Cycle-to-Cycle Jitter                                     |       | TBD |      |      | TBD |     |      | TBD |      | ps    |               |
| $V_{PP}$              | Input Swing   | 150   |     | 1000 | 150  |     | 100 | 150  |     | 1000 | mV    | Figure 1      |
| $t_r$ , $t_f$         | Output Rise Times Q<br>(20% to 80%)                       | 100   | 225 | 350  | 100  | 225 | 350 | 100  | 225 | 350  | ps    | Figure 2      |

**Note 10:**  $V_{EE}$  can vary +0.8V / -0.5V.

**Note 11:** Measured using a 750 mV input swing centered at  $V_{CC} - 1.32V$ ; 50% duty cycle clock source;  $t_r = t_f = 250$  ps (20% - 80%) at  $f_{IN} = 1$  MHz. All loading with 50 $\Omega$  to  $V_{CC} - 2.0V$ .

**Note 12:** Within-device skew defined as identical transitions on similar paths through a device.

**Note 13:** Duty cycle skew is the difference between a  $t_{PLH}$  and  $t_{PHL}$  propagation delay through a device under identical conditions.

## Switching Waveforms

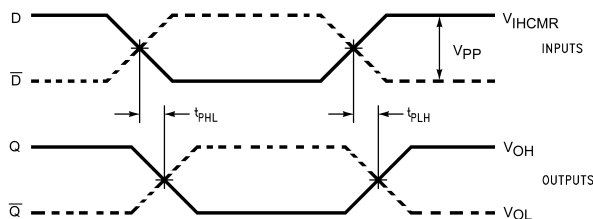


FIGURE 1. Differential to Differential Propagation Delay

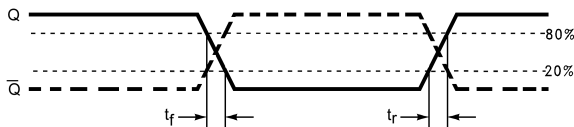
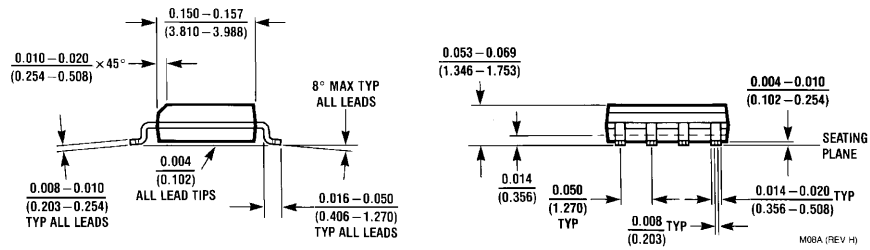
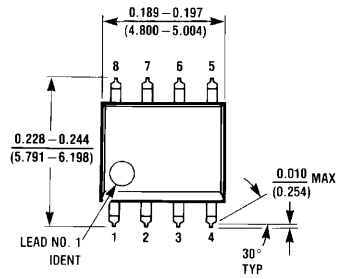


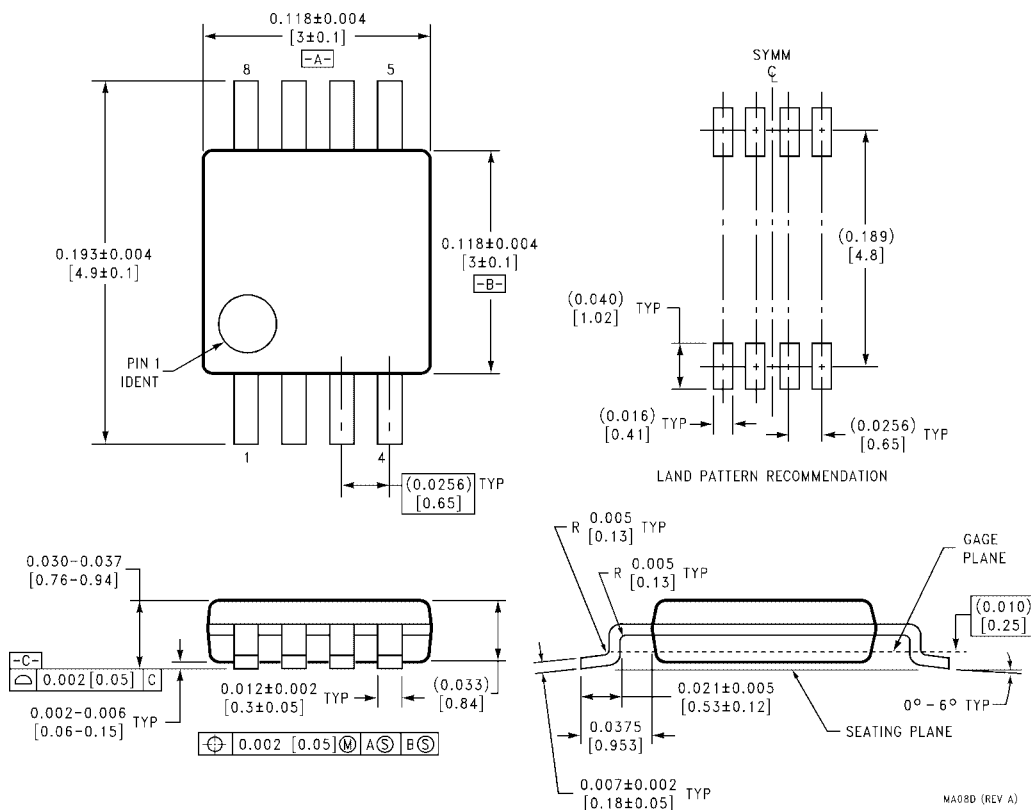
FIGURE 2. Differential Output Edge Rates

**Physical Dimensions** inches (millimeters) unless otherwise noted



**8-Lead Small Outline Integrated Circuit (SOIC), JEDEC MS-012, 0.150" Narrow  
Package Number M08A**

**Physical Dimensions** inches (millimeters) unless otherwise noted (Continued)



**8-Lead Molded Small Outline Package (MSOP), JEDEC MO-187, 3.0mm Wide  
Package Number MA08D**

Fairchild does not assume any responsibility for use of any circuitry described, no circuit patent licenses are implied and Fairchild reserves the right at any time without notice to change said circuitry and specifications.

**LIFE SUPPORT POLICY**

FAIRCHILD'S PRODUCTS ARE NOT AUTHORIZED FOR USE AS CRITICAL COMPONENTS IN LIFE SUPPORT DEVICES OR SYSTEMS WITHOUT THE EXPRESS WRITTEN APPROVAL OF THE PRESIDENT OF FAIRCHILD SEMICONDUCTOR CORPORATION. As used herein:

1. Life support devices or systems are devices or systems which, (a) are intended for surgical implant into the body, or (b) support or sustain life, and (c) whose failure to perform when properly used in accordance with instructions for use provided in the labeling, can be reasonably expected to result in a significant injury to the user.
2. A critical component in any component of a life support device or system whose failure to perform can be reasonably expected to cause the failure of the life support device or system, or to affect its safety or effectiveness.

[www.fairchildsemi.com](http://www.fairchildsemi.com)

Copyright © Each Manufacturing Company.

All Datasheets cannot be modified without permission.

This datasheet has been download from :

[www.AllDataSheet.com](http://www.AllDataSheet.com)

100% Free DataSheet Search Site.

Free Download.

No Register.

Fast Search System.

[www.AllDataSheet.com](http://www.AllDataSheet.com)