

Audio Analog Switch

FEATURES

- Wide Operating Voltage Range (3 to 13 V)
- Low Distortion (typ. 0.004%)
- Wide Dynamic Range (typ. 6 V_{P-P})
- Low Output Impedance (typ. 20 Ω)
- Protection at Output Terminal.

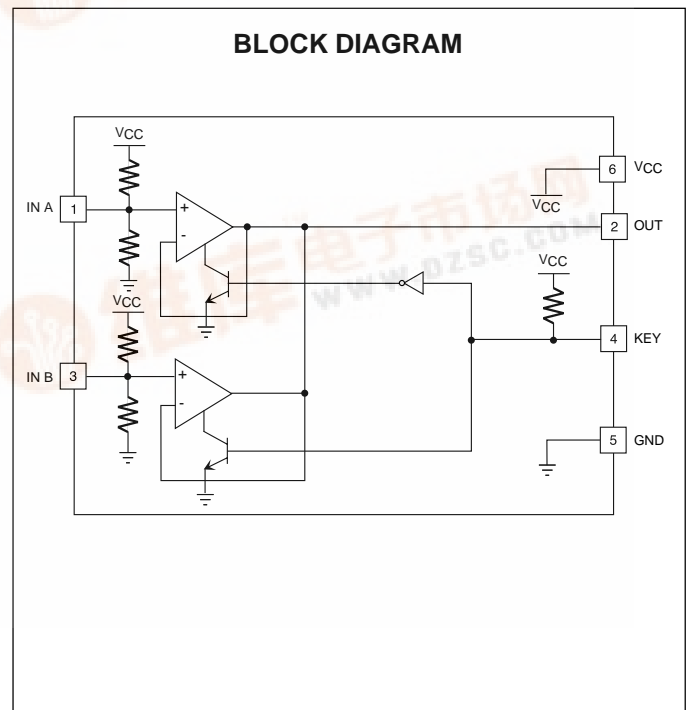
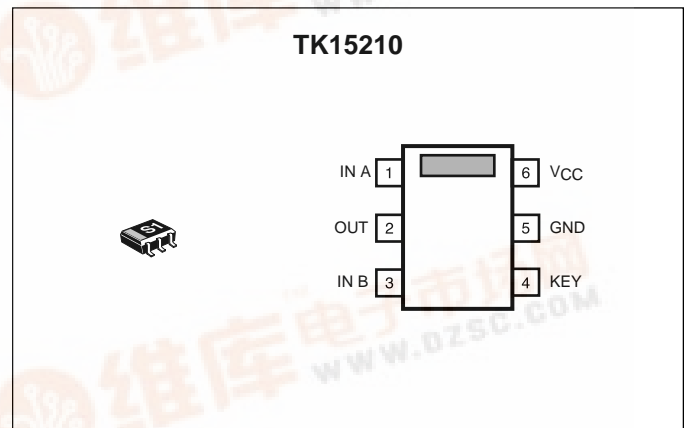
APPLICATIONS

- Audio Systems
- Radio Cassettes

DESCRIPTION

The TK15210M is an Analog Switch IC that was developed for audio frequency applications. The function of the IC is to select one output from two input channels. The channel selection is controlled by a low level. The TK15210M operates from a single power supply with the input bias built-in ($V_{CC}/2$). Because the distortion is very low, the TK15210M is suitable for various signal switching applications, especially Hi-Fi devices. The TK15210M offers a wide operating voltage range with simple associated circuitry.

The TK15210M is available in the small SOT23L-6 plastic surface mount package.



ORDERING INFORMATION

TK15210M □□

Tape/Reel Code

TAPE/REEL CODE
TL: Tape Left



TK15210

ABSOLUTE MAXIMUM RATINGS

Supply Voltage 14 V
 Operating Voltage Range 3 to 13 V
 Power Dissipation (Note 4) 200 mW
 Storage Temperature Range -55 to +150 °C
 Operating Temperature Range -20 to +75 °C
CONTROL SECTION
 Input Voltage -0.3 V to $V_{CC} + 0.3$ V

ANALOG SWITCH SECTION

Signal Input Voltage -0.3 V to $V_{CC} + 0.3$ V
 Signal Output Current 3 mA
 Maximum Input Frequency 100 kHz
 Lead Soldering Temperature (10 s) 235 °C

TK15210M ELECTRICAL CHARACTERISTICS

Test conditions: $V_{CC} = 8.0$ V, $T_A = 25$ °C, unless otherwise specified.

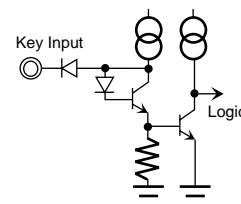
SYMBOL	PARAMETER	TEST CONDITIONS	MIN	TYP	MAX	UNITS
I_{CC}	Supply Current			2.5	5.0	mA
KEY CONTROL SECTION						
V_{IL}	Input Voltage Low Level	Note 1	-0.3		+0.6	V
V_{IH}	Input Voltage High Level		2.0		$V_{CC} + 0.3$	V
I_{OKEY}	Outflow Current	Pin 4 connected to GND			30	μA
ANALOG SWITCH SECTION						
THD	Total Harmonic Distortion	$V_{IN} = 1$ Vrms, $f = 1$ kHz		0.004	0.008	%
N_L	Residual Noise	Note 2			10	μVrms
CT	Cross Talk	$V_{IN} = 1$ Vrms, $f = 10$ kHz, Note 3		-80	-75	dB
DYN	Maximum Input Signal Level	$f = 1$ kHz, THD = 0.1%	2.0			Vrms
GVA	Voltage Gain	$f = \sim 20$ kHz		0		dB
V_{cent}	Input-Output Terminal Voltage	$V_{CC} / 2$ output	3.8	4.0	4.2	V
ΔV_{cent}	Output Terminal Voltage Difference				18	mV
Z_{IN}	Input Impedance	DC Impedance		36		kΩ
Z_{OUT}	Output Impedance	DC Impedance		20		Ω

Note 1: The KEY input equivalent circuit is shown to the right. When the control pin is open, the input is pulled up to a high level (approximately 1.4 V). This applies the channel A input signal to the output. A low level changes the output to the channel B input signal.

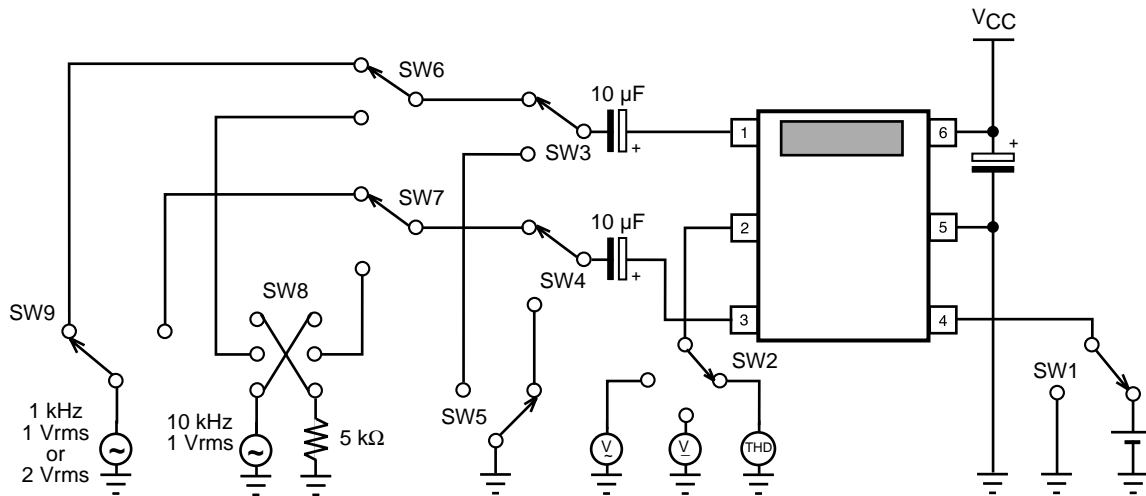
Note 2: This value measured with a capacitor connected between the input terminal and ground. See Figure 7.

Note 3: This value measured with a 5 kΩ resistor and series capacitor connected between the input terminal and ground. See Figure 8.

Note 4: Power dissipation is 200 mW when mounted as recommended. Derate at 1.6 mW/°C for operation above 25 °C.



TEST CIRCUITS AND METHODS



- 1: The above condition tests the dynamic range measurement for channel A.
- 2: SW5 is for residual noise measurement.
- 3: SW8 is for cross talk measurement.

SUPPLY CURRENT (FIGURE 1)

This current is a consumption current with a nonloading condition.

- 1) Measure the inflow current to Pin 6 from V_{CC} . This current is the supply current.

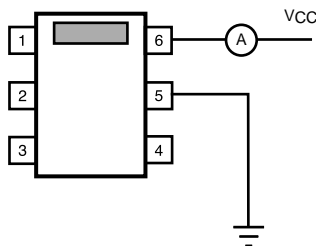


Figure 1

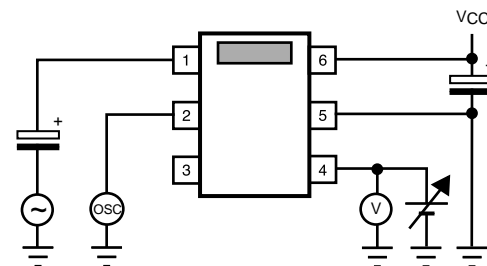


Figure 2

KEY INPUT CURRENT (FIGURE 3)

This current is the outflow current from the control terminal.

- 1) Measure the current to GND from Pin 4. This current is the outflow current.

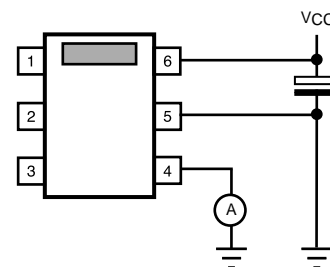


Figure 3

CONTROL LOW/HIGH LEVEL (FIGURE 2)

This level is a measurement of the threshold level.

- 1) Input V_{CC} to Pin 6. (This condition is the same with all remaining measurements, omitted from their descriptions for simplicity.)
- 2) Input to Pin 1 with sine wave (1 kHz, 1 Vrms).
- 3) Connect an oscilloscope to Pin 2.
- 4) Elevate the Pin 4 voltage from 0 V gradually, until the sine wave appears at the oscilloscope. This voltage is the threshold level when the wave appears.

TEST CIRCUITS AND METHODS (CONT.)

TOTAL HARMONIC DISTORTION (FIGURE 4)

Use the lower distortion oscillator for this measurement because the distortion of the TK15210 is very low.

- 1) Pin 4 is in the open condition, or high level.
- 2) Connect a distortion analyzer to Pin 2.
- 3) Input a sine wave (1 kHz, 1 Vrms) to Pin 1.
- 4) Measure the distortion of Pin 2. This value is the distortion of Ach.
- 5) Next connect Pin 4 to GND, or low level.
- 6) Input the same sine wave to Pin 3.
- 7) Measure in the same way. This value is the distortion of Bch.

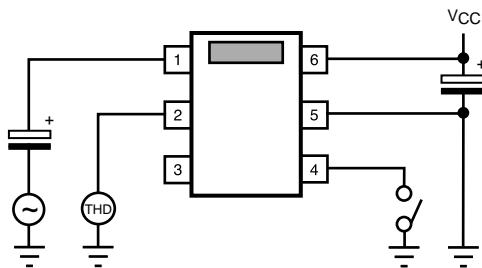


Figure 4

VOLTAGE GAIN (FIGURE 5)

This is the output level vs. the input level.

- 1) Pin 4 is in the open condition, or high level.
- 2) Connect AC volt meters to Pin 1 and Pin 3.
(For best results, use identical meters.)
- 3) Input a sine wave (1 kHz) to Pin 1 (f = optional up to max. 20 kHz, 1 Vrms).
- 4) Measure the level of Pin 1 and name this V1.
- 5) Measure the level of Pin 2 and name this V2.
- 6) Calculate $Gain = 20 \text{ Log}_{10} ((|V2 - V1|)/V1)$
 $V1 < V2 = + \text{Gain}$, $V1 > V2 = - \text{Gain}$
 This value is the voltage gain of Ach.
- 7) Next, connect Pin 4 to GND, or low level.
- 8) Input the same sine wave to Pin 3.
- 9) Measure and calculate in the same way.
 This value is the voltage gain of Bch.

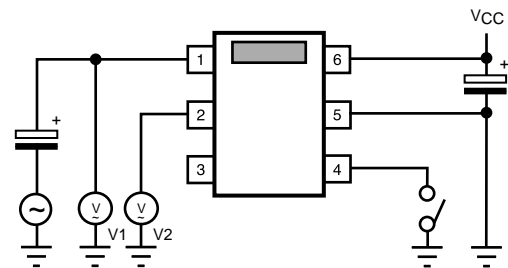


Figure 5

MAXIMUM INPUT LEVEL (FIGURE 6)

This measurement is made at the output side.

- 1) Pin 4 is in the open condition, or high level.
- 2) Connect a distortion analyzer and an AC volt meter to Pin 2.
- 3) Input a sine wave (1 kHz) to Pin 1 and elevate the voltage from 0 V gradually until the distortion gets to 0.1% at Pin 2.
- 4) When the distortion amounts to 0.1%, stop elevating and measure the AC level of Pin 2.
 This value is the maximum input level of Ach.
- 5) Next, connect Pin 4 to GND, or low level.
- 6) Input the same sine wave to Pin 3.
- 7) Measure in the same way.
 This value is the maximum input level of Bch.

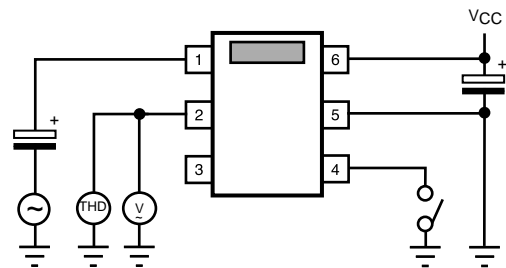


Figure 6

TEST CIRCUITS AND METHODS (CONT.)

RESIDUAL NOISE (FIGURE 7)

This value is not a S/N ratio. This is a noise which occurs from the device itself.

- 1) Pin 4 is in the open condition, or high level.
- 2) Connect an AC volt meter to Pin 2.
- 3) Connect a capacitor to GND from Pin 1.
- 4) Measure the AC voltage of Pin 2. This value is the noise of Ach. If external noise exists, use optional filters to eliminate it.
- 5) Next, connect Pin 4 to GND, or low level.
- 6) Remove the capacitor of Pin 1 and connect the capacitor to Pin 3.
- 7) Measure in the same way.
This value is the noise level of Bch.

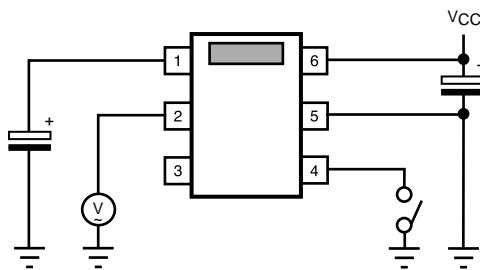


Figure 7

CROSS TALK (FIGURE 8)

This is the cross talk between Ach and Bch.

- 1) Pin 4 is in the open condition, or high level.
- 2) Connect AC voltmeters to Pin 2 and Pin 3.
- 3) Connect a capacitor and a resistance in series to GND from Pin 1.
- 4) Input sine wave (10 kHz, 1 Vrms) to Pin 3.
- 5) Measure the level of Pin 3 and name this V3.
- 6) Measure the level of Pin 2 and name this V4.
- 7) Calculate:

$$\text{Cross Talk} = 20 \text{ Log}_{10} (V4 / V3)$$
 This value is the cross talk to Ach from Bch.
- 8) Next, connect Pin 4 to GND, or low level.
- 9) Change line of Pin 1 and Pin 3.
- 10) Input the same sine wave to Pin 1.
- 11) Measure and calculate in the same way.
This value is the isolation to Bch from Ach.

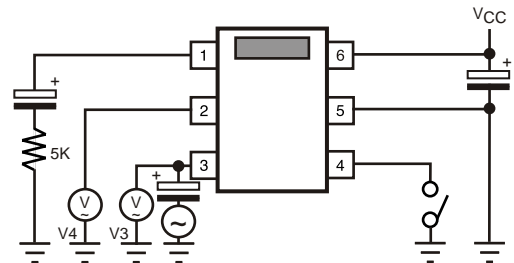


Figure 8

I/O TERMINAL VOLTAGE (FIGURE 9)

This is the DC voltage of the input and output.

Because the input and the output are nearly equal, only the output is measured.

- 1) Pin 4 is in the open condition, or high level.
- 2) Connect a DC voltmeter to Pin 2 and measure.
This value is the terminal voltage of Ach.
- 3) Next, connect Pin 4 to GND, or low level.
- 4) Measure in the same way.
This value is the terminal voltage of Bch.

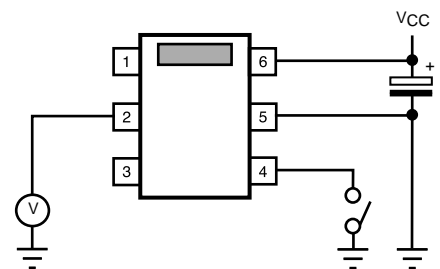


Figure 9

OUTPUT TERMINAL DIFFERENCE

This is the DC output voltage difference between Ach and Bch. This is calculated by using values measured at the I/O Terminal Voltage.

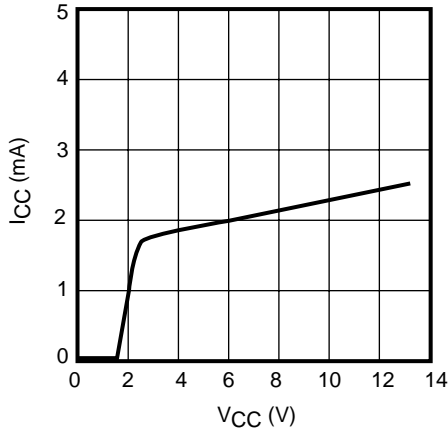
$$\Delta V_{\text{cent}} = | (\text{Ach DC output value}) - (\text{Bch DC output value}) |$$

This value is the voltage difference.

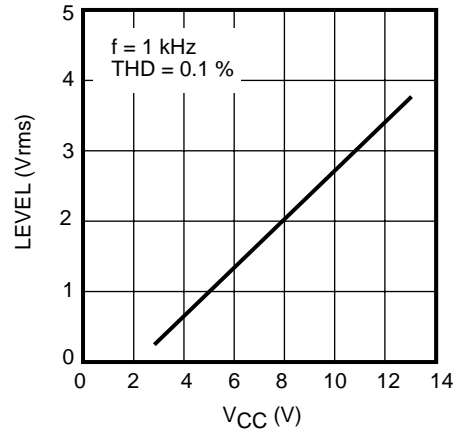
TYPICAL PERFORMANCE CHARACTERISTICS

$V_{CC} = 8\text{ V}$, $T_A = 25\text{ }^\circ\text{C}$, unless otherwise specified.

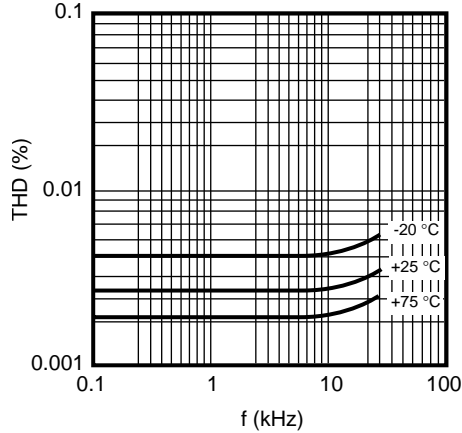
SUPPLY CURRENT vs. SUPPLY VOLTAGE



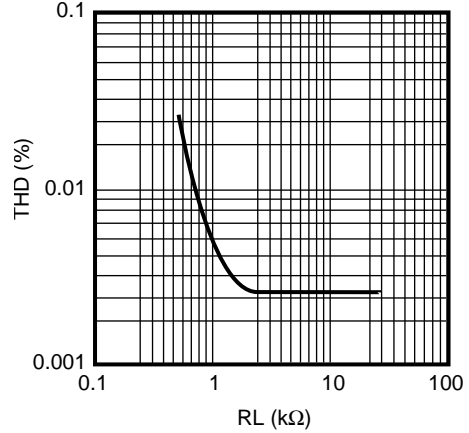
MAXIMUM INPUT LEVEL vs. SUPPLY VOLTAGE



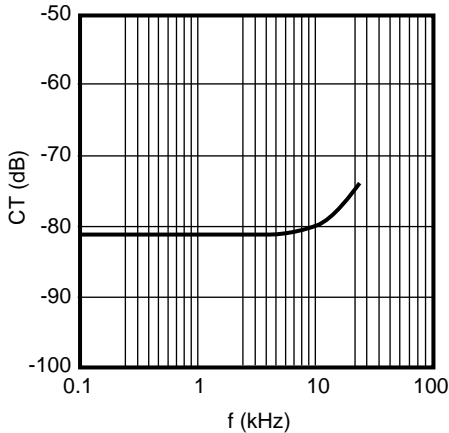
TOTAL HARMONIC DISTORTION vs. FREQUENCY



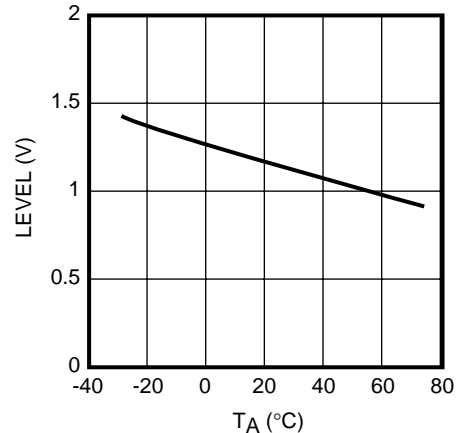
TOTAL HARMONIC DISTORTION vs. LOAD RESISTANCE

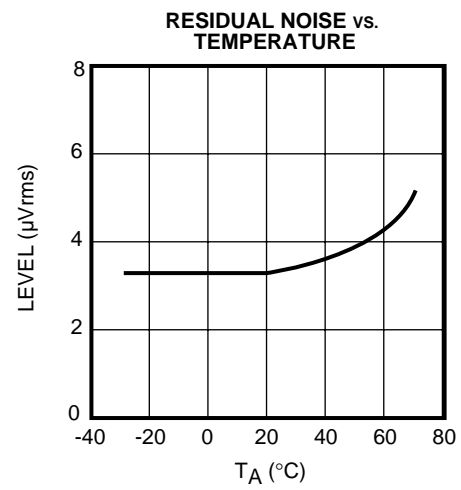
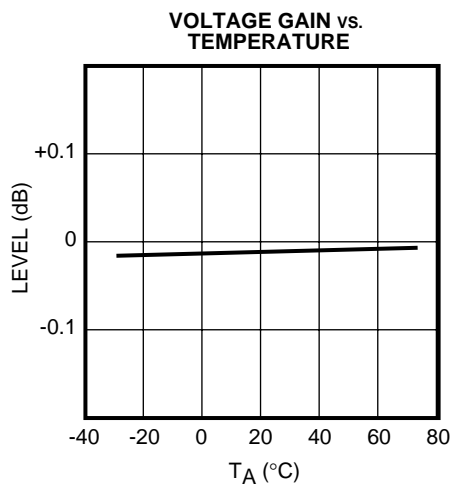


CROSS TALK vs. FREQUENCY



KEY THRESHOLD vs. TEMPERATURE

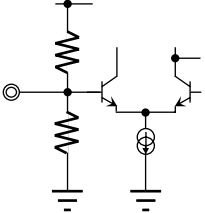
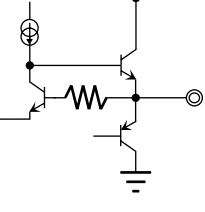
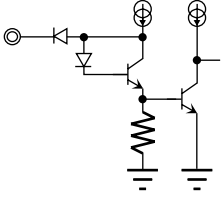


TYPICAL PERFORMANCE CHARACTERISTICS (CONT.) $V_{CC} = 8\text{ V}$, $T_A = 25\text{ }^\circ\text{C}$, unless otherwise specified.

TK15210

TERMINAL VOLTAGE AND CIRCUIT

Condition: $V_{CC} = 8\text{ V}$.

PIN NO.	ASSIGNMENT	DC VOLTAGE	CIRCUIT/FUNCTION
1 3	IN A IN B	4 V	 <p>Signal Input Pin</p>
2	OUT	4 V	 <p>Signal Output Pin</p>
4	KEY	1.4 V	 <p>Key Input Pin</p>
5	GND	0 V	Ground Pin
6	V_{CC}	8 V	Supply Voltage Pin

APPLICATION INFORMATION

KEY INPUT CIRCUIT

Figure 10 illustrates the KEY input equivalent circuit. When the control pin is open, the input is pulled up to a high level (approximately 1.4 V). This applies the channel A input signal to the output. A low level changes the output to the channel B input signal. When the control terminal is pulled low, a current up to 30 μA may flow out of the terminal. For this reason, an external resistor value must be selected which results in a voltage of less than 0.8 V to maintain a low condition.

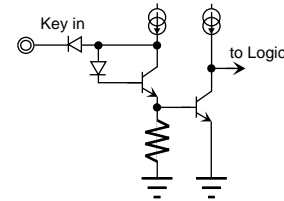


Figure 10

SWITCHING TIME

This time is the signal change response time compared to the control key input signal. Figure 11 illustrates the timing chart. $T = 2 \mu\text{s}$ typically.

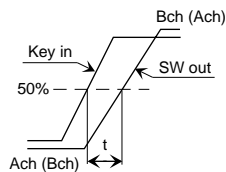


Figure 11

APPLICATION

Figure 12 illustrates an example of a typical application. The standard application is to use capacitor coupling at the inputs and output of the TK15210M. For characteristics of distortion and dynamic range versus R_L , refer to the graphs in the Typical Performance Characteristics. The TK15210M can also be used with direct coupling, but the characteristics will get worse (distortion, etc.). If direct coupling is desired, then it is recommended to use external circuitry that is biased compatible with the TK15210M.

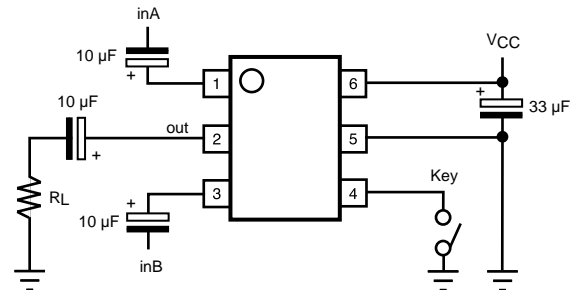


Figure 12

CROSS TALK

Figure 13 is an example of a layout pattern. In the application of the TK15210M, the following must be considered. Because of the high impedance at the inputs, the capacitors can act as antennas to each other. If the parts are bigger, and the space between the capacitors is too narrow, then cross talk will increase. Therefore, when designing the printed circuit pattern, separate the input capacitors as far as possible and use as small a part as possible (e.g., surface mount types, etc.).

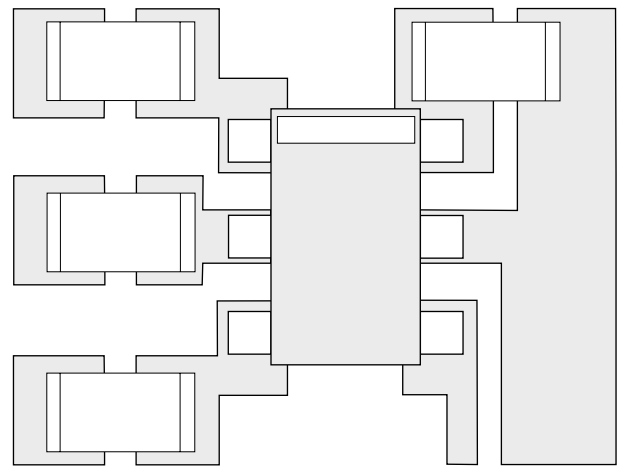


Figure 13

APPLICATION INFORMATION (CONT.)

OUTPUT TERMINAL VOLTAGE DIFFERENCE

This parameter is the output voltage difference between Ach and Bch, and appears when the channel changes from Ach to Bch, or vice versa. Generally, this is called Switching Noise or Pop Noise. If this value is big and if this noise is amplified by the final amplifier and is applied to the speakers, then it appears as a Shock Sound. The output terminal voltage difference of the TK15210M is a value that adds the internal bias difference and the offset voltage difference. The value of the TK15210 is very small; its maximum value is 18 mV. Toko can offer the "Muting IC" if users wish to mute Switching Noise.

DIRECT CONTACT

The signal input terminals:

Internal circuits are operated by constant current circuits; even if V_{CC} or GND is contacted, damage does not occur.

The signal output terminal:

As for inflow, internal circuits are operated by constant current circuits; even if V_{CC} is contacted, damage does not occur.

Outflow is protected by the circuit. Even if the terminal is contacted to GND, damage does not happen. Package damage may occur due to heat. Pay attention to long time contact.

Do not supply over the maximum rating.

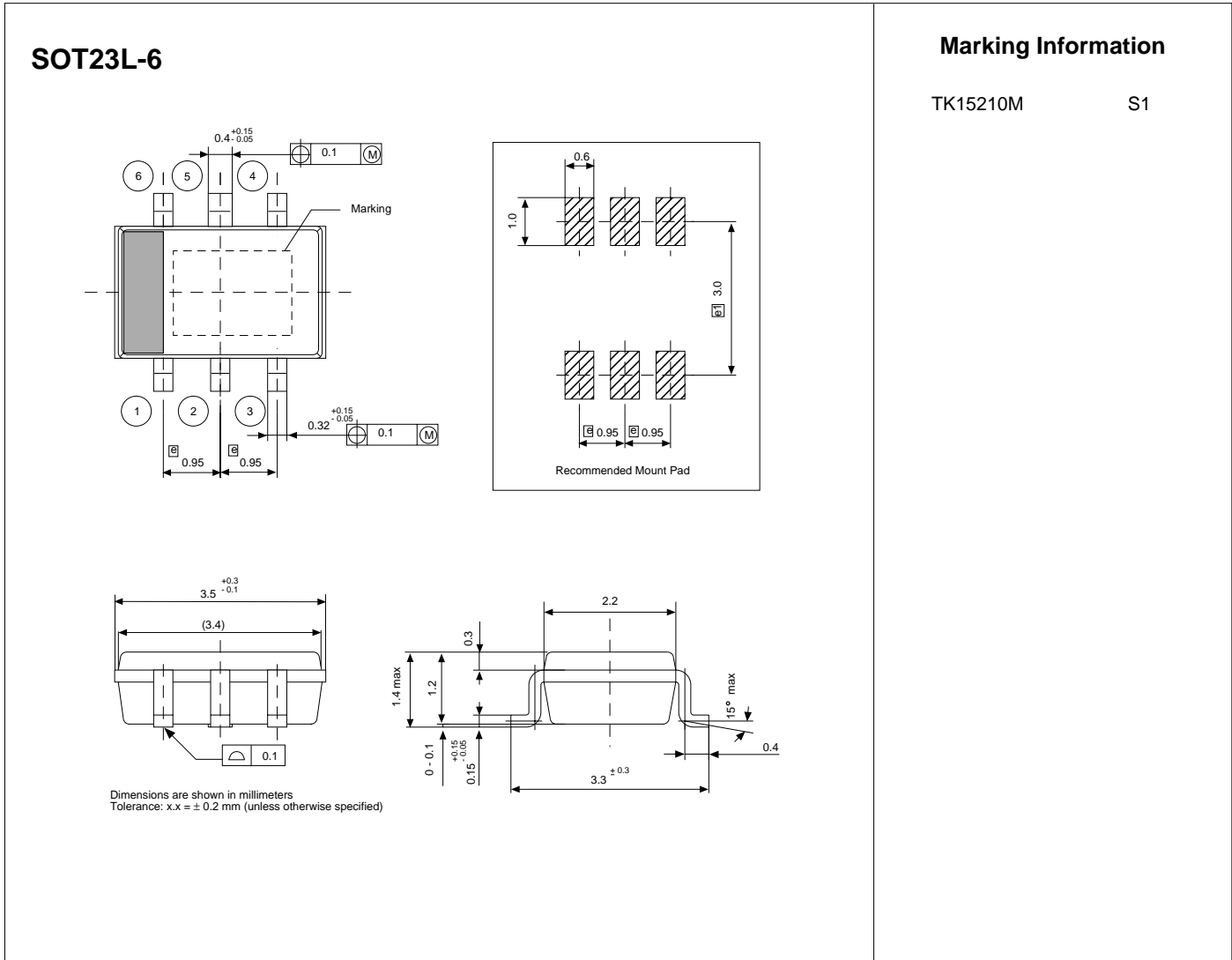
Referenced to GND, do not provide terminal voltages over $V_{CC} + 0.3$ V or -0.3 V.

DC SIGNAL OUTPUT

The output of the TK15210M has a saturation voltage (both V_{CC} and GND sides of approximately 1.0 V); accordingly the use of a DC signal is not recommended (e.g., pulse signal, etc.).

NOTES

PACKAGE OUTLINE



Toko America, Inc. Headquarters
1250 Feehanville Drive, Mount Prospect, Illinois 60056
Tel: (847) 297-0070 Fax: (847) 699-7864

TOKO AMERICA REGIONAL OFFICES

Midwest Regional Office
Toko America, Inc.
1250 Feehanville Drive
Mount Prospect, IL 60056
Tel: (847) 297-0070
Fax: (847) 699-7864

Western Regional Office
Toko America, Inc.
2480 North First Street, Suite 260
San Jose, CA 95131
Tel: (408) 432-8281
Fax: (408) 943-9790

Eastern Regional Office
Toko America, Inc.
107 Mill Plain Road
Danbury, CT 06811
Tel: (203) 748-6871
Fax: (203) 797-1223

Semiconductor Technical Support
Toko Design Center
4755 Forge Road
Colorado Springs, CO 80907
Tel: (719) 528-2200
Fax: (719) 528-2375

Visit our Internet site at <http://www.tokoam.com>

The information furnished by TOKO, Inc. is believed to be accurate and reliable. However, TOKO reserves the right to make changes or improvements in the design, specification or manufacture of its products without further notice. TOKO does not assume any liability arising from the application or use of any product or circuit described herein, nor for any infringements of patents or other rights of third parties which may result from the use of its products. No license is granted by implication or otherwise under any patent or patent rights of TOKO, Inc.