



# DAVIES

## PHENOLIC

# CONTROL KNOBS



1200



1202



1204



1210



1216



1206



1214

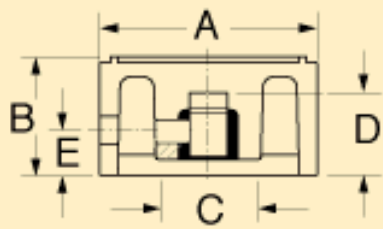


1208

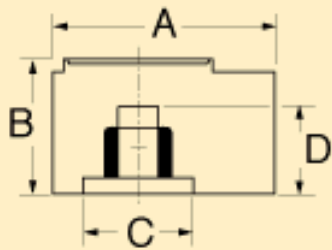
### Material - Phenolic

Part No.	"A"	"B"	"C"	"D"	Inside Diameter	Finish	Type	Set Screw	"E"	"G"
1210AX	1-1/32	5/8	21/32	17/32	1/4	SC	Plain Hole	8-32	9/32	

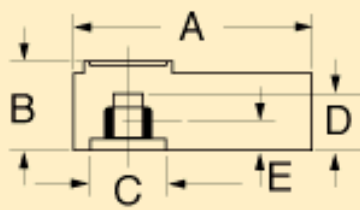
PH-Plain Hole    BB-Brass Brushing    SC-Spun Silver Cap  
 SCL-Spun Silver Cap w/Indicator



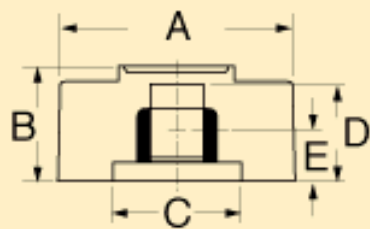
1200/1202/1204/  
1206/1208



1210



1214



1216

[← back](#)