

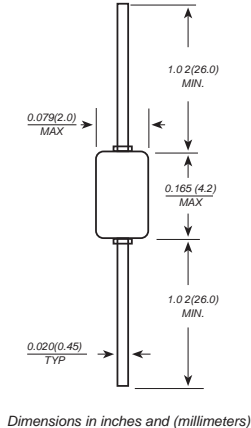


DB3

BIDIRECTIONAL TRIGGER DIODE

Reverse Voltage - 32 Volts Power: 150mW

DO-35(GLASS)



FEATURES

- ◆ Small glass structure ensures high reliability
- ◆ VBO:28-36V version
- ◆ Low breakover current
- ◆ High temperature soldering guaranteed
250°C/10 seconds, 0.375" (9.5mm) lead length,
5 lbs. (2.3kg) tension

MECHANICAL DATA

Case: JEDEC DO-35 glass body

Terminals: Plated axial leads, solderable per MIL-STD-750, Method 2026

Mounting Position: Any

Weight: 0.005 ounce, 0.14gram

MAXIMUM RATINGS AND CHARACTERISTICS

Ratings at 25°C ambient temperature unless otherwise specified.

| MDD Catalog Number | TEST CONDITION | SYMBOLS | VALUE | | | UNITS |
|--|----------------------------|------------------------|-------|------|------|--------------|
| | | | Min. | Typ. | Max. | |
| Breakover voltage * | C=22nF ** | V_{BO} | 28 | 32 | 36 | VOLTS |
| Breakover voltage symmetry | C=22nF ** | $ +V_{BO1}-I-V_{BO1} $ | -3 | | 3 | VOLTS |
| Dynamic breakover voltage * | (NOTE 1) | $ \Delta V \pm I $ | 5 | | | VOLTS |
| Output voltage * | DIAGRAM2 | V_o | 5 | | | VOLTS |
| Breakover current * | C=22nF ** | I_{BO} | | | 100 | μA |
| Rise time * | DIAGRAM3 | t_r | | 1.5 | | μS |
| Leakage current * | $V_R=0.5V_{BO}$ | I_B | | | 10 | μA |
| Power dissipation on printed circuit | $T_A=65^\circ C$ | P_d | | | 150 | mW |
| Repetitive peak on-state current | $t_p=20\mu s$ $f=100Hz$ | I_{TRM} | | | 2 | A |
| Thermal Resistances from Junction to ambient | | $R_{\theta JA}$ | | | 400 | $^\circ C/W$ |
| Thermal Resistances from Junction to lead | | $R_{\theta JL}$ | | | 150 | |
| Operating junction and storage temperature range | | T_J, T_{STG} | -40 | | 125 | $^\circ C$ |

* :Electrical characteristic appoicaboe in forward and reverse directions.

** :Connected in parallel with the devices.

Note 1: I_{BO} from I_{BO} to 10mA

MDD ELECTRONIC

RATINGS AND CHARACTERISTIC CURVES DB3

DIAGRAM 1: CURRENT-VOLTAGE CHARACTERISTICS

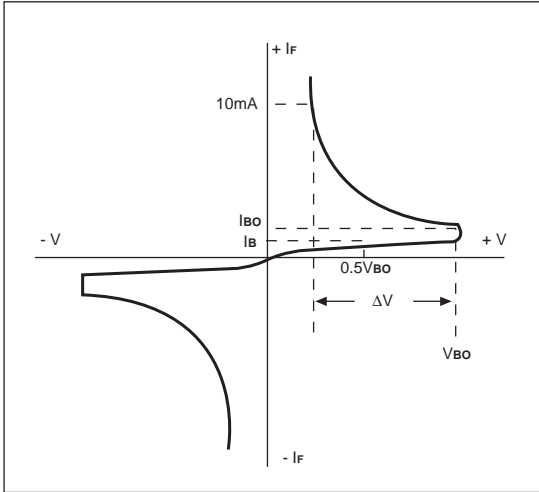


DIAGRAM 2: TEST CIRCUIT OUTPUT VOLTAGE

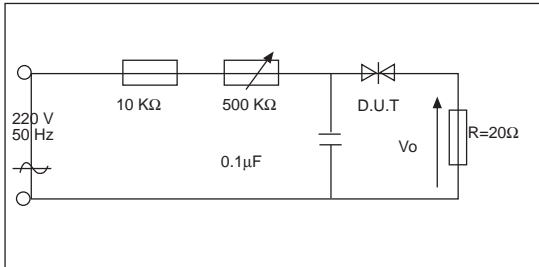


DIAGRAM 3: TEST CIRCUIT SEE DIAGRAM 2. ADJUST R FOR $I_P=0.5A$

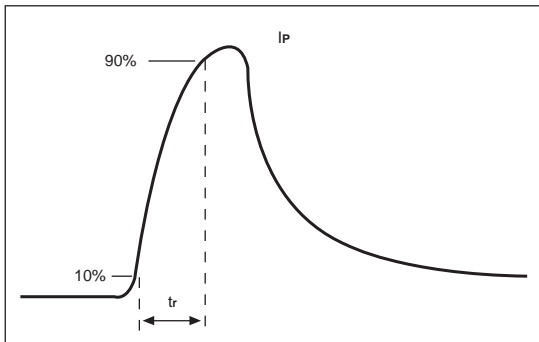


FIG. 1-POWER DISSIPATION VERSUS AMBIENT TEMPERATURE(MAXIMUM VALUES)

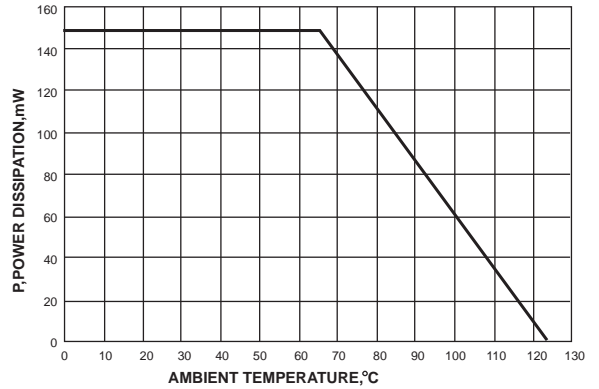


FIG. 2-PEAK PULSE CURRENT VERSUS PULSE DURATION (MAXIMUM VALUES)

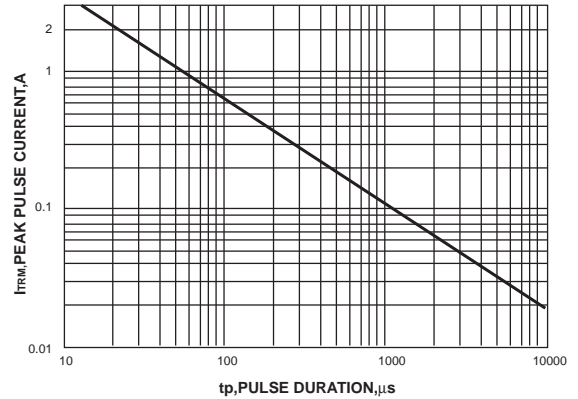


FIG. 3-RELATIVE VARIATION OF V_{Bo} VERSUS JUNCTION TEMPERATURE(TYPICAL VALUES)

