

Low Capacitance TVS Diode Array

APPLICATIONS

- ◆ USB Power & Data Line Protection
- ◆ Ethernet 10BaseT
- ◆ I²C Bus Protection
- ◆ Video Line Protection
- ◆ T1/E1 secondary IC Side Protection
- ◆ Microcontroller Input Protection
- ◆ ISDN S/T Interface
- ◆ WAN/LAN Equipment

IEC COMPATIBILITY

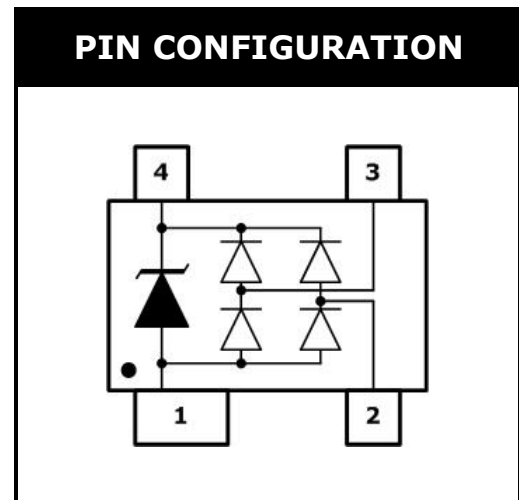
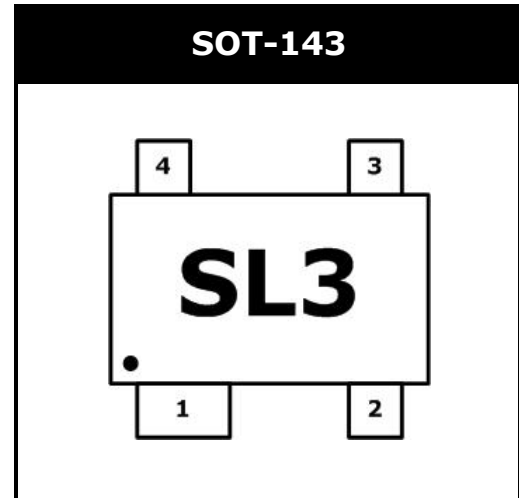
- ◆ IEC61000-4-2 (ESD) ±15kV (air), ±8kV (contact)
- ◆ IEC61000-4-4 (EFT) 40A (5/50 ns)
- ◆ IEC61000-4-5 (Lightning) 12A (8/20µs)

FEATURES

- ◆ 500 Watts Peak Pulse Power per Line (tp=8/20µs)
- ◆ Protects two I/O lines
- ◆ Low clamping voltage
- ◆ Working voltages : 5V
- ◆ Low leakage current

MECHANICAL CHARACTERISTICS

- ◆ JEDEC SOT-143 Package
- ◆ Molding Compound Flammability Rating : UL 94V-O
- ◆ Weight 10 Milligrams (Approximate)
- ◆ Quantity Per Reel : 3,000pcs
- ◆ Reel Size : 7 inch
- ◆ Lead Finish : Lead Free



DEVICE CHARACTERISTICS

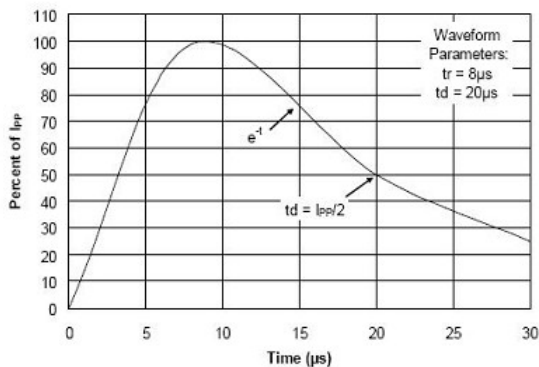
MAXIMUM RATINGS (@ 25°C Unless Otherwise Specified)

PARAMETER	SYMBOL	VALUE	UNITS
Peak Pulse Power (tp=8/20µs waveform)	P _{PP}	500	Watts
Lead Soldering Temperature	T _L	260 (10 sec.)	°C
Operating Temperature Range	T _J	-55 ~ 150	°C
Storage Temperature Range	T _{STG}	-55 ~ 150	°C

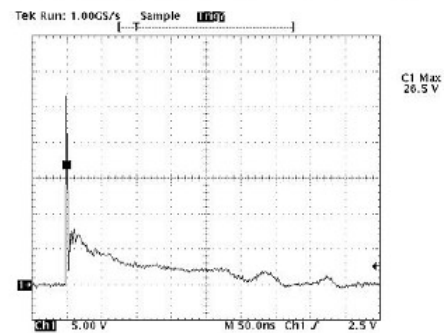
ELECTRICAL CHARACTERISTICS PER LINE (@ 25°C Unless Otherwise Specified)

PART NUMBER	DEVICE MARKING	V _{RWM}	V _B	I _T	V _C	V _C		I _R	C _T
		(V) (max.)	(V) (min.)	(mA)	@1A (max.)	(max.)	(@A)	(µA) (max.)	(pF) (max.)
SR05	SL3	5	6	1	9.8	12	10	5	3

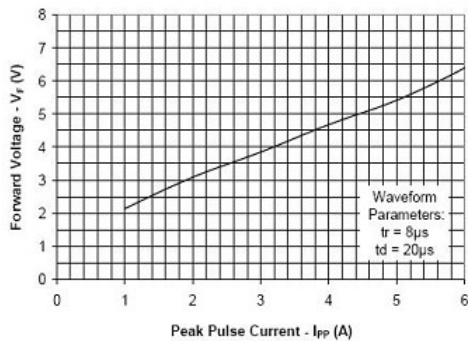
Pulse Waveform



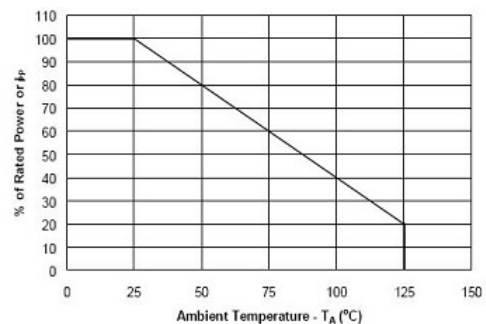
ESD Response (8kV Contact per IEC 61000-4-2)



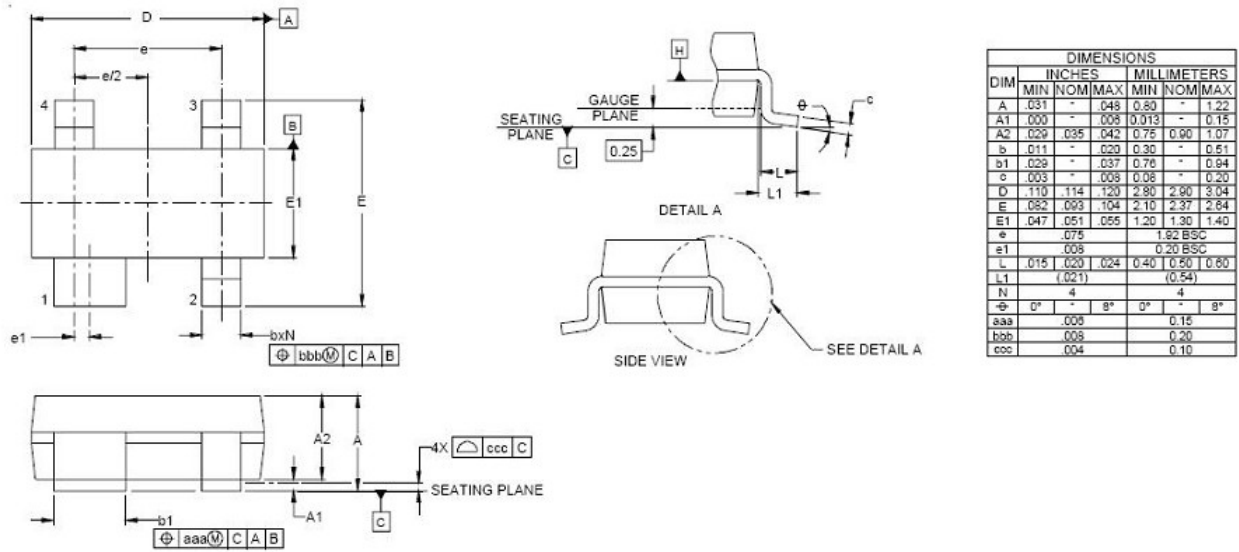
Note: Data is taken with a 10x attenuator



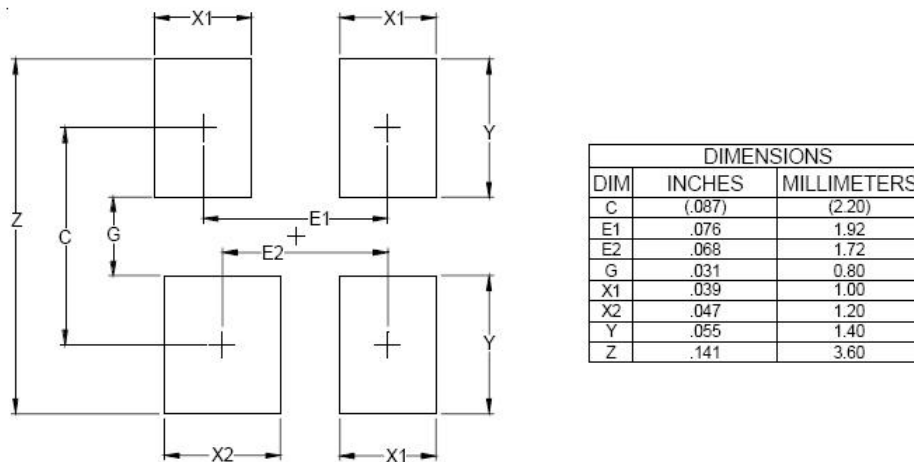
Power Derating Curve



SOT-143 PACKAGE OUTLINE & DIMENSIONS



* SOLDERING FOOTPRINT



SHANGHAI LEIDITECH ELECTRONICS TECHNOLOGY CO., LTD

Phone: +86- 021-50827201

Email:sale1@leiditech.com

<http://www.leiditech.com>