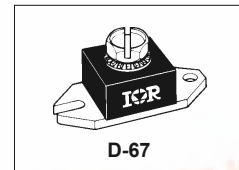


International IOR Rectifier

123NQ... (R) SERIES

SCHOTTKY RECTIFIER

120 Amp



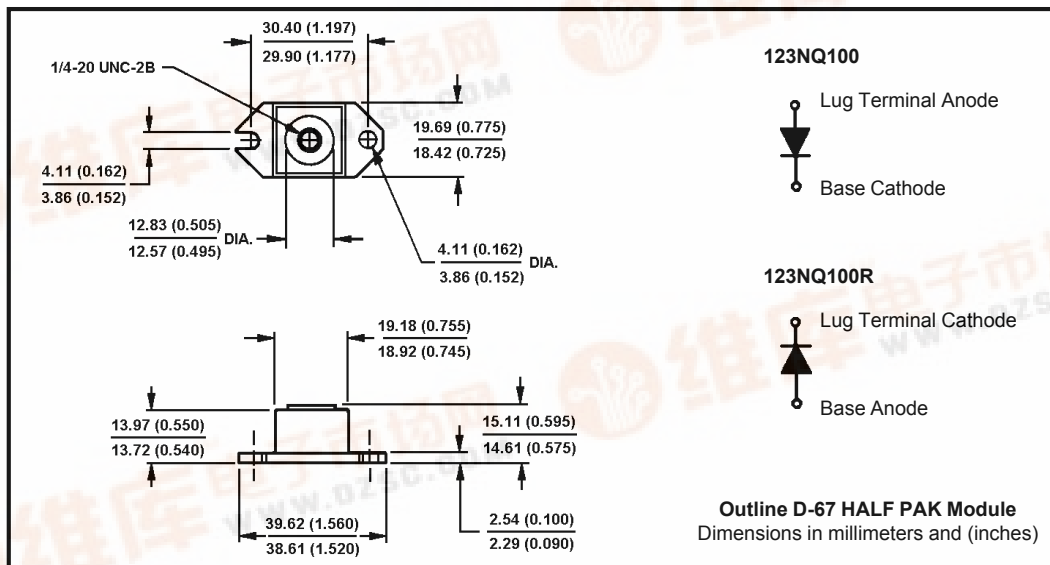
Major Ratings and Characteristics

Characteristics	123NQ...(R)	Units
$I_{F(AV)}$ Rectangular waveform	120	A
V_{RRM} range	80 to 100	V
I_{FSM} @ $t_p=5\ \mu\text{s}$ sine	16,000	A
V_F @120Apk, $T_j=125^\circ\text{C}$	0.74	V
T_j range	-55 to 175	$^\circ\text{C}$

Description/Features

The 123NQ... (R) high current Schottky rectifier module series has been optimized for low reverse leakage at high temperature. The proprietary barrier technology allows for reliable operation up to 175°C junction temperature. Typical applications are in switching power supplies, converters, free-wheeling diodes, and reverse battery protection.

- 175°C T_j operation
- Unique high power, Half-Pak module
- Replaces two parallel DO-5's
- Easier to mount and lower profile than DO-5's
- High purity, high temperature epoxy encapsulation for enhanced mechanical strength and moisture resistance
- Low forward voltage drop
- High frequency operation
- Guard ring for enhanced ruggedness and long term reliability



123NQ...(R) Series

Bulletin PD-2.250 rev. C 05/02

International
 Rectifier

Voltage Ratings

Part number	123NQ080	123NQ090	123NQ100
V _R Max. DC Reverse Voltage (V)	80	90	100
V _{RWM} Max. Working Peak Reverse Voltage (V)			

Absolute Maximum Ratings

Parameters	123NQ	Units	Conditions
I _{F(AV)} Max. Average Forward Current * See Fig. 5	120	A	50% duty cycle @ T _C = 121 °C, rectangular wave form
I _{FSM} Max. Peak One Cycle Non-Repetitive Surge Current * See Fig. 7	16,000	A	5µs Sine or 3µs Rect. pulse 10ms Sine or 6ms Rect. pulse
	2100		
E _{AS} Non-Repetitive Avalanche Energy	15	mJ	T _J = 25 °C, I _{AS} = 1 Amps, L = 30 mH
I _{AR} Repetitive Avalanche Current	1	A	Current decaying linearly to zero in 1 µsec Frequency limited by T _J max. V _A = 1.5 × V _R typical

Electrical Specifications

Parameters	123NQ	Units	Conditions
V _{FM} Max. Forward Voltage Drop (1) * See Fig. 1	0.91	V	@ 120A
	1.08	V	@ 240A
	0.74	V	@ 120A
	0.88	V	@ 240A
I _{RM} Max. Reverse Leakage Current (1) * See Fig. 2	3	mA	T _J = 25 °C
	40	mA	T _J = 125 °C
C _T Max. Junction Capacitance	2650	pF	V _R = 5V _{DC} , (test signal range 100Khz to 1Mhz) 25 °C
L _S Typical Series Inductance	7.0	nH	From top of terminal hole to mounting plane
dv/dt Max. Voltage Rate of Change (Rated V _R)	10000	V/ µs	

(1) Pulse Width < 300µs, Duty Cycle < 2%

Thermal-Mechanical Specifications

Parameters	123NQ	Units	Conditions	
T _J Max. Junction Temperature Range	-55 to 175	°C		
T _{stg} Max. Storage Temperature Range	-55 to 175	°C		
R _{thJC} Max. Thermal Resistance Junction to Case	0.40	°C/W	DC operation * See Fig. 4	
R _{thCS} Typical Thermal Resistance, Case to Heatsink	0.15	°C/W	Mounting surface, smooth and greased	
wt Approximate Weight	25.6 (0.9)	g (oz.)		
T Mounting Torque	Min.	40 (35)	Non-lubricated threads	
	Max.	58 (50)		
	Terminal Torque	Min.		58 (50)
		Max.		86 (75)
Case Style	HALF PAK Module			

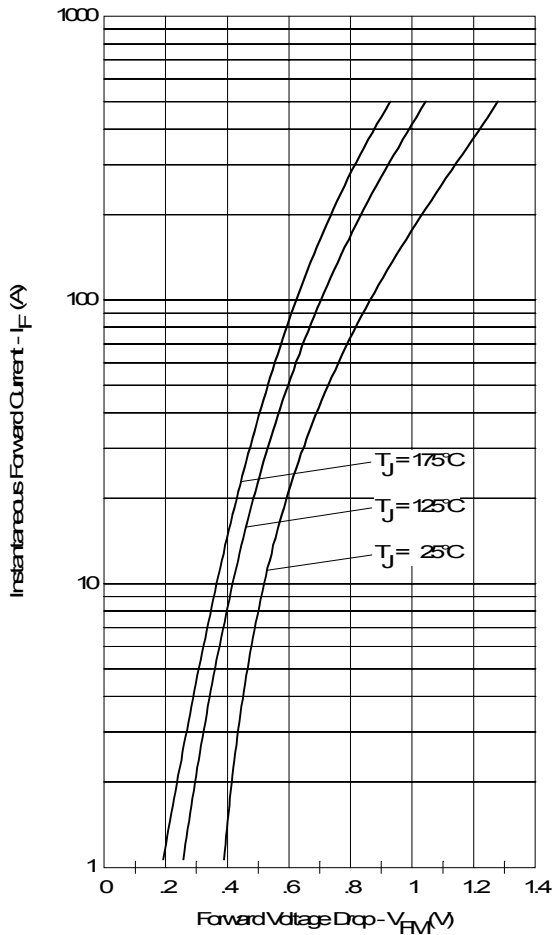


Fig. 1 - Maximum Forward Voltage Drop Characteristics

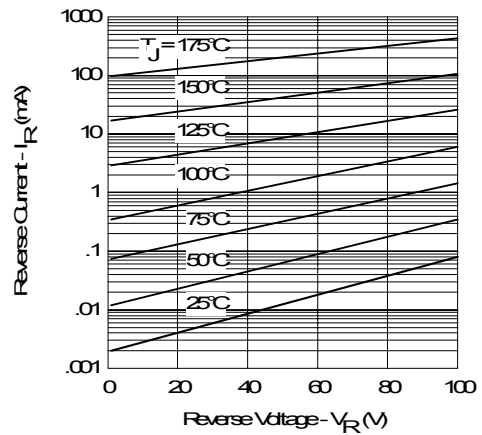


Fig. 2 - Typical Values of Reverse Current Vs. Reverse Voltage

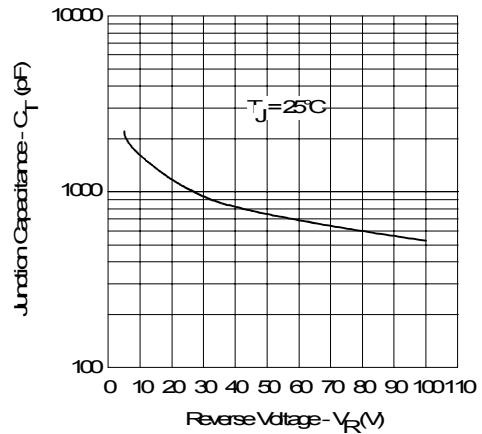


Fig. 3 - Typical Junction Capacitance Vs. Reverse Voltage

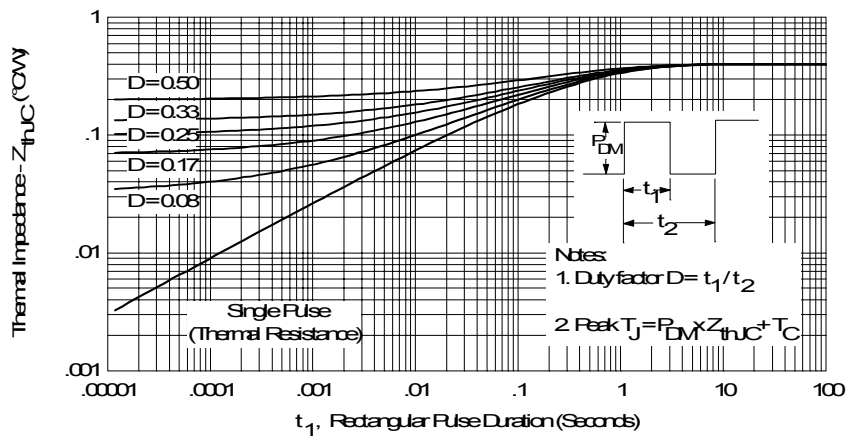


Fig. 4 - Maximum Thermal Impedance Z_{thJC} Characteristics

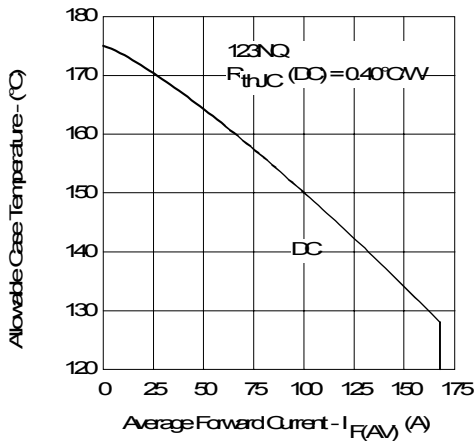


Fig. 5 - Maximum Allowable Case Temperature Vs. Average Forward Current

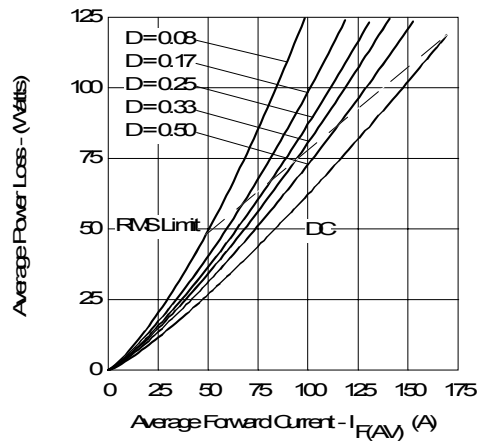


Fig. 6 - Forward Power Loss Characteristics

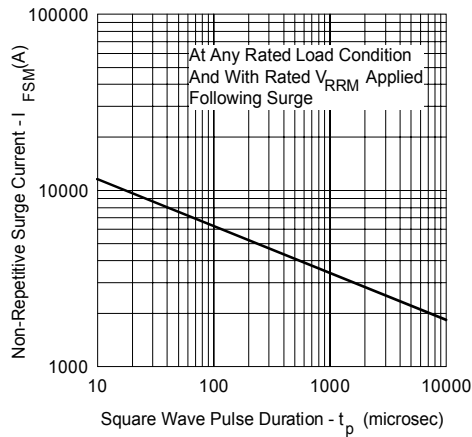


Fig. 7 - Maximum Non-Repetitive Surge Current

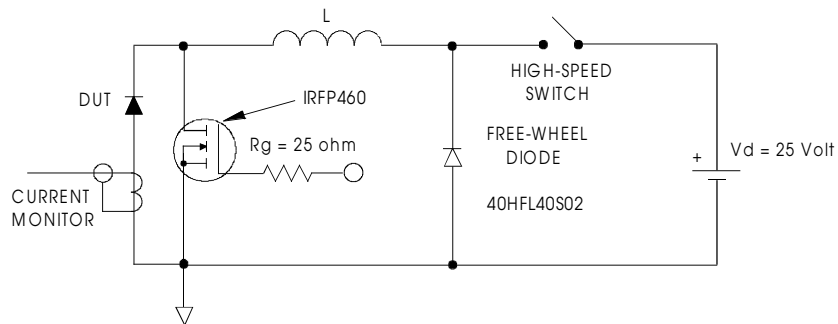


Fig. 8 - Unclamped Inductive Test Circuit

Data and specifications subject to change without notice.
This product has been designed and qualified for Industrial Level.
Qualification Standards can be found on IR's Web site.

International
IOR Rectifier

IR WORLD HEADQUARTERS: 233 Kansas St., El Segundo, California 90245, USA Tel: (310) 252-7105
TAC Fax: (310) 252-7309
Visit us at www.irf.com for sales contact information. 05/02