

**SURFACE MOUNT SCHOTTKY
BARRIER RECTIFIERS**

SS2150A

FEATURES

- Metal-Semiconductor junction with guard ring
- Epitaxial construction
- Low forward voltage drop, low switching losses
- High surge capacity
- For use in low voltage, high frequency inverters free wheeling, and polarity protection applications



MECHANICAL DATA

- Case: SMA molded plastic body
- Terminals: Axial lead ,solderable per MIL-STD750, Method 2026
- Polarity: As marked

MAXIMUM RATINGS AND ELECTRICAL CHARACTERISTICS

Ratings at 25°C ambient temperature unless otherwise specified

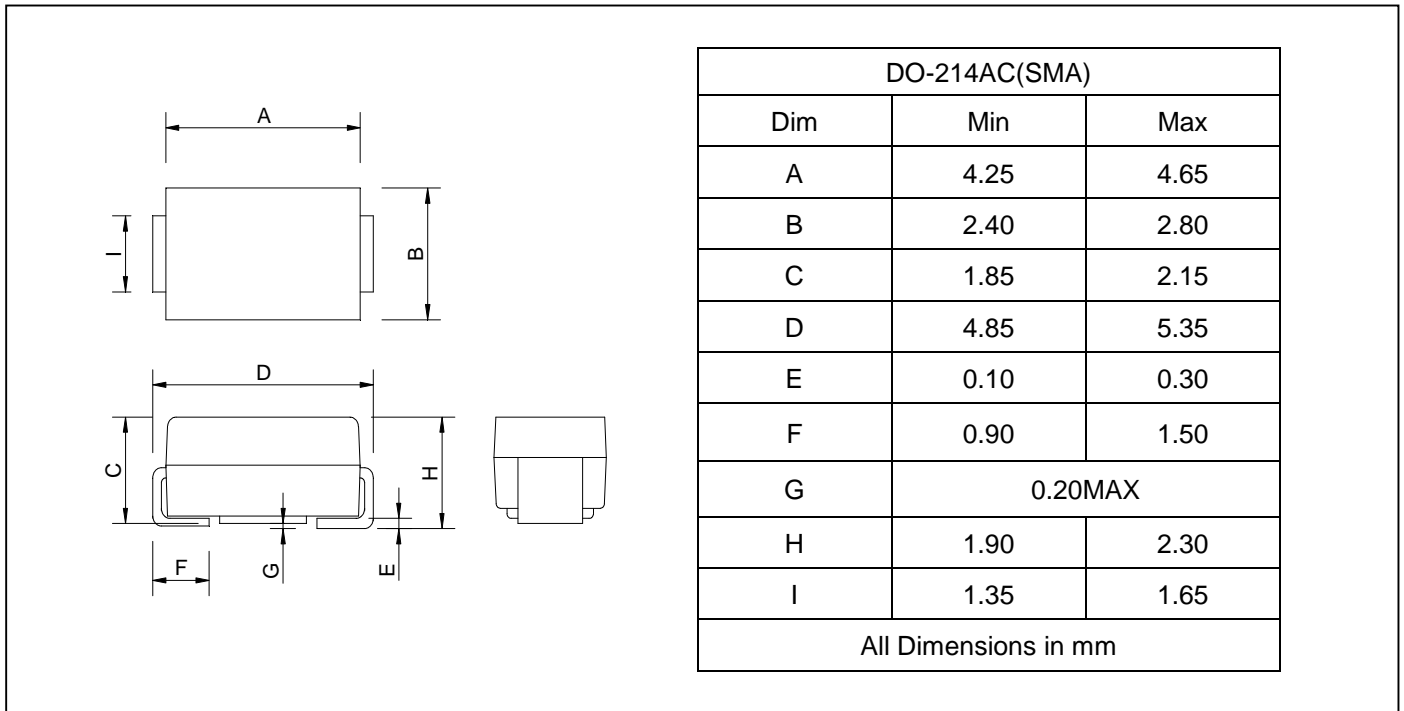
		SS2150A	UNITS
Marking code		SS2CA	
Maximum repetitive peak reverse voltage	V_{RRM}	150	V
Maximum RMS voltage	V_{RWS}	135	V
Maximum DC blocking voltage	V_{DC}	150	V
Maximum average forward rectified current at $T_L=110^\circ\text{C}$	$I_{F(AV)}$	2.0	A
Peak forward surge current 8.3ms single half-sine-wave	I_{FSM}	50	A
Maximum instantaneous forward voltage at $I_{FM}=2.0\text{A}$	V_F	0.95	V
Maximum DC reverse current $T_A=25^\circ\text{C}$ at rated DC blocking voltage $T_A=100^\circ\text{C}$	I_R	0.1 10	m A
Maximum thermal resistance(NOTE1)	$R_{\theta JA}$	15	$^\circ\text{C}/\text{W}$
Operating temperature range	T_J	-55-----+125	$^\circ\text{C}$
Storage temperature range	T_{STG}	-55-----+125	$^\circ\text{C}$

NOTE: 1. Thermal resistance from junction to ambient.

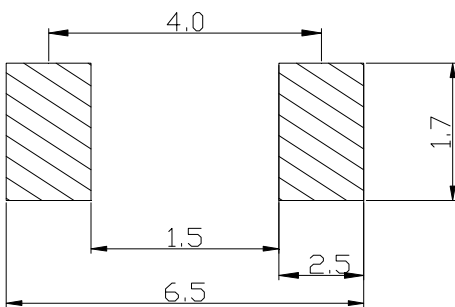
**SURFACE MOUNT SCHOTTKY
BARRIER RECTIFIERS**

SS2150A

PACKAGE OUTLINE DIMENSIONS



SOLDERING FOOTPRINT



Unit : mm

PACKAGE INFORMATION

Device	Package	Shipping
SS2150A	DO-214AC(SMA)	5000/Tape&Reel

**SURFACE MOUNT SCHOTTKY
BARRIER RECTIFIERS**

SS2150A

FIG.1 TYPICAL FORWARD CHARACTERISTICS

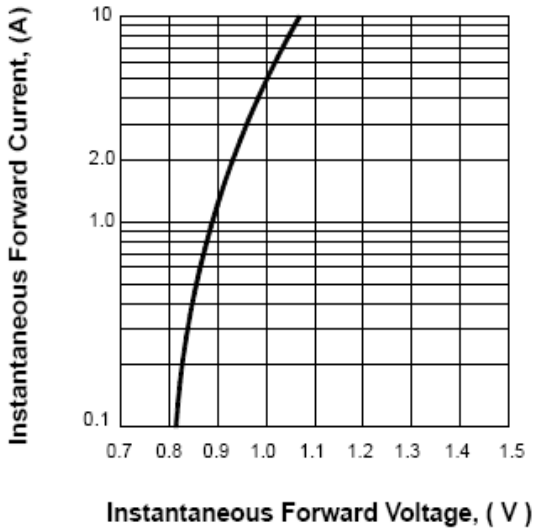


FIG.2 FORWARD DERATING CURVE

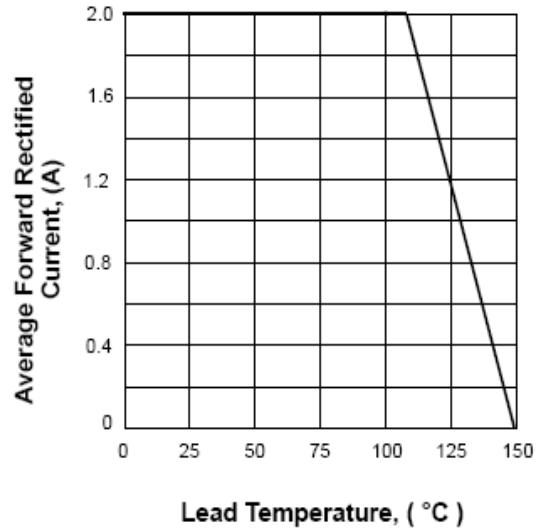


FIG.3 TYPICAL REVERSE CHARACTERISTICS

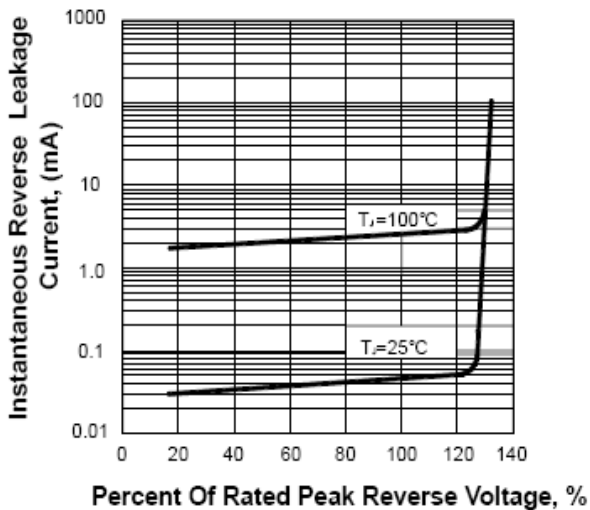


FIG.4 PEAK FORWARD SURGE CURRENT

