

Surface Mount Rectifiers

RS2A--RS2M

FEATURES

- Low profile package
- For surface mounted applications
- Built-in strain relief, ideal for automated placement
- Plastic package has underwriters, laborator flammability classification 94V-0
- High temperature soldering: 250°C/10 seconds at terminals



MECHANICAL DATA

- Case :JEDEC SMA, molded plastic over passivated chip
- Terminals: Solder plated, solderable per MIL-STD-750, Method 2026
- Polarity: color band denotes cathode end
- Weight: 0.003 ounces, 0.093 gram

MAXIMUM RATINGS AND ELECTRICAL CHARACTERISTICS

Ratings at 25°C ambient temperature unless otherwise specified.

		RS2A	RS2B	RS2D	RS2G	RS2J	RS2K	RS2M	UNITS
Maximum recurrent peak reverse voltage	V _{RRM}	50	100	200	400	600	800	1000	V
Maximum RMS voltage	V _{RMS}	35	70	140	280	420	560	700	V
Maximum DC blocking voltage	V _{DC}	50	100	200	400	600	800	1000	V
Maximum average forward rectified current T _L =90°C	I _{F(AV)}	2.0							A
Peak forward surge current 8.3ms single half-sine-wave superimposed on rated load	I _{FSM}	50							A
Maximum instantaneous forward voltage at 2.0 A	V _F	1.30							V
Maximum reverse current @T _A =25 °C at rated DC blocking voltage @T _A =125°C	I _R	5.0 200							μ A
Typical reverse recovery time (Note1)	t _{rr}	150				250	500		ns
Typical junction capacitance (Note2)	C _J	18							p F
Typical thermal resistance (Note3)	R _{θJA}	40							°C/W
	R _{θJL}	15							
Operating junction and storage temperature range	T _J T _{STG}	- 55 ----- + 150							°C

NOTE: 1.Reverse recovery time test conditions: I_F=0.5A, I_R=1.0A, I_{rr}=0.25A

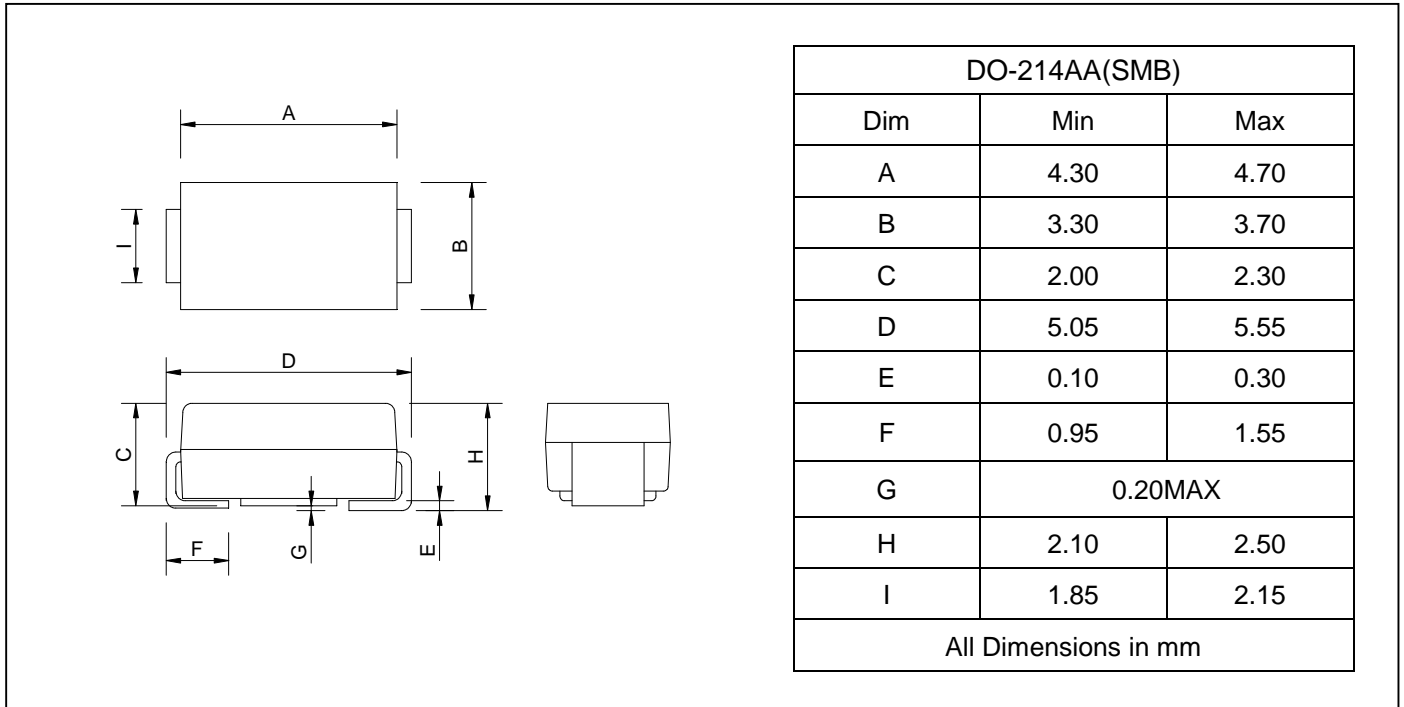
2. Measured at 1.0MHz and applied reverse voltage of 4.0 Volts

3. Thermal resistance from junction to ambient and junction to lead P.C.B. mounted on 0.2"X0.2"(5.0X5.0mm2) copper pad areas

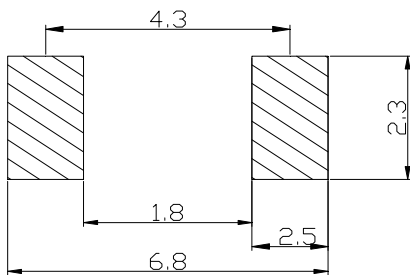
Surface Mount Rectifiers

RS2A--RS2M

PACKAGE OUTLINE DIMENSIONS



SOLDERING FOOTPRINT



Unit : mm

PACKAGE INFORMATION

Device	Package	Shipping
RS2A--RS2M	DO-214AA(SMB)	3000/Tape&Reel

Surface Mount Rectifiers

RS2A--RS2M

FIG.1 – FORWARD DERATING CURVE

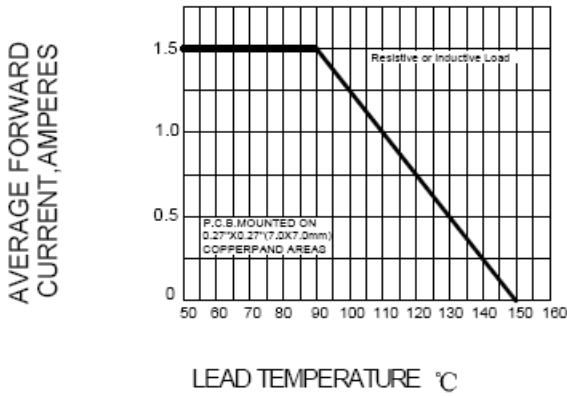


FIG.2 PEAK FORWARD SURGE CURRENT

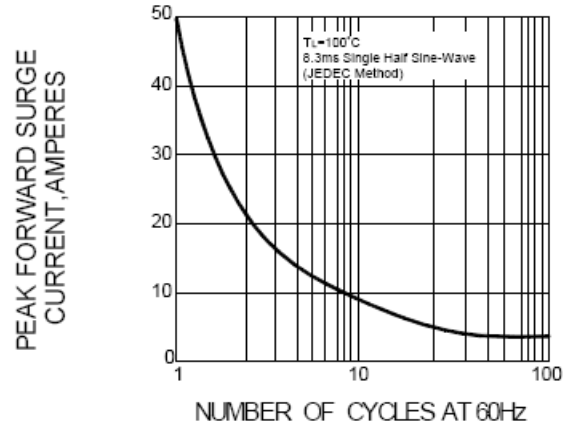


FIG.3 – TYPICAL FORWARD CHARACTERISTICS

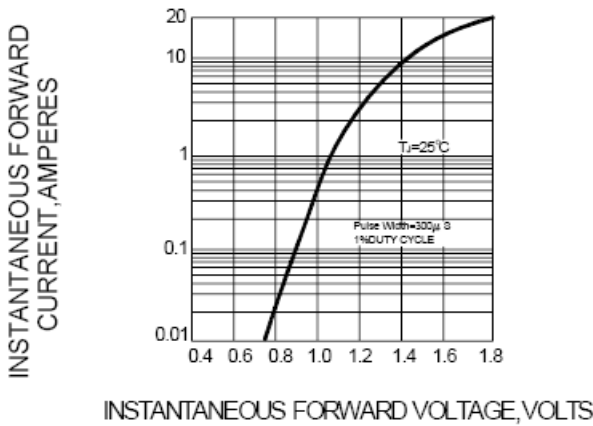


FIG.4 – TYPICAL REVERSE CHARACTERISTICS

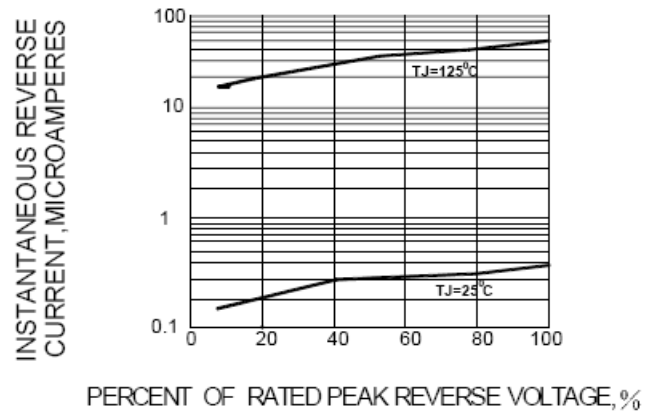


FIG.5-TYPICAL JUNCTION CAPACITANCE

