



- Clean, Uncluttered Look
- Maximum Readability in Minimum Required Height
- Two Popular Sizes: 3-1/2", 4-1/2"
- Calibration Not Affected When Mounted on Steel Panels
- Phenolic Cases with Glass Windows



Model Number	Size	Meter Movement
523	3-1/2"	Annular Self-shielding
524	4-1/2"	Annular Self-shielding

Look to the Designer Series for use in today's compact equipment designs - without sacrificing readability. The professionally styled Designer meters offered by Simpson take up less than 3" of panel height, yet the scale is over 3-1/2" long.

providing excellent reliability and  $\pm 2$  percent of full scale (F.S.) accuracy. The 3-1/2 inch and 4-1/2 in sizes available feature a self-shielding meter movement. This movement construction allows meter to mounted on steel panels.

With a black phenolic case and glass window for optimum viewing, the Designer has a red knife-edge pointer,

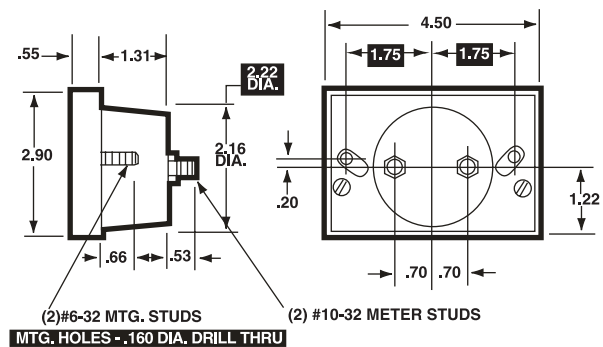
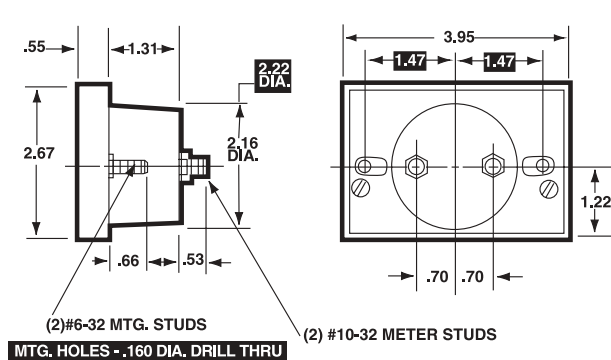
This style meter is ideal for many other electrical functions. See "Function Reference Table."

### Dimensions and Compatibility

3-1/2"-Model 523

1 = Panel Meter Cut-out Dimensions

4-1/2"-Model 524



### Compatibility Reference Table

Manufacturer	Size/Model	
	3-1/2"	4-1/2"
Hoyt	2135	2145
Triplett G Series	320-R	420-R

## Specifications

<b>Accuracy:</b>	±2% F.S.	<b>Case:</b>	Black phenolic with glass window
<b>Movement:</b>	Annular, self-shielding	<b>Resistance:</b>	±15%
<b>Suspension:</b>	Pivot and jewel	<b>Operating Temperature:</b>	-4°F to +149°F (-20°C to +65°C)
<b>Tracking:</b>	±3%	<b>Pointer:</b>	Red, knife-edge
<b>Shielding:</b>	Calibration is unaffected by magnetic panel mounting.	<b>Scale Length:</b>	Model 523: 2.92" (74.2mm) Model 524: 3.25" (82.5mm)
<b>Response Time:</b>	1.5 seconds maximum	<b>Net Weight:</b>	Model 523: 9oz (0.26kg) Model 524: 10oz (0.28kg)
<b>Overload (1 sec.):</b>	10 times F.S.		
<b>Overload (Continuous):</b>	1.5 times F.S.		
<b>Repeatability:</b>	2%		
<b>Dial:</b>	Sharp clear scale. Each dial arc is calibrated to track the specific type of movement used.		

## Ordering Information

### DC Voltage Self-Shielding Meter Movement

Range	Approx. Impedance (Ohms)	Model/Size and Catalog Number	
		3-1/2" Model 523	4-1/2" Model 524
0-5	1000 ohms per volt	15038	15108
0-10		15039	15109
0-15		15040	15110
0-30		15042	15112
0-50		15044	15114
0-100		15045	15111
0-150		15046	15116

### DC Millivoltmeters Self-Shielding Meter Movement

Range	Approx. Impedance (Ohms)	Model/Size and Catalog Number	
		3-1/2" Model 523	4-1/2" Model 524
0-50	10	15048	15118

## Function Reference Table

For your convenience, the table below lists Designer models for other electrical monitoring functions with page number reference.

Function	Section	Page
AC Current	E	21
AC Voltage	E	41
DC Current	E	61

## Engineer's Notes