

2SB1580 / 2SB1316 / 2SB1567

Transistors

Power Transistor (-100V, -2A)
2SB1580 / 2SB1316 / 2SB1567

●Features

- 1) Darlington connection for high DC current gain.
- 2) Built-in resistor between base and emitter.
- 3) Built-in damper diode.
- 4) Complements the 2SD2195 / 2SD1980 / 2SD2398.

●Absolute maximum ratings (Ta = 25°C)

Parameter	Symbol	Limits	Unit
Collector-base voltage	V _{CB0}	-100	V
Collector-emitter voltage	V _{CE0}	-100	V
Emitter-base voltage	V _{EB0}	-8	V
Collector current	I _C	-2	A(DC)
		-3	A(Pulse) *1
Collector power dissipation	P _C	2	W
		10	W(Tc=25°C)
		2	W
Junction temperature	T _J	150	°C
		Storage temperature	T _{stg}

*1 Single pulse Pw=100ms

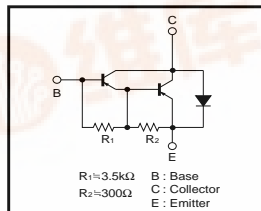
*2 When mounted on a 40 x 40 x 0.7 mm ceramic board.

●Packaging specifications and hFE

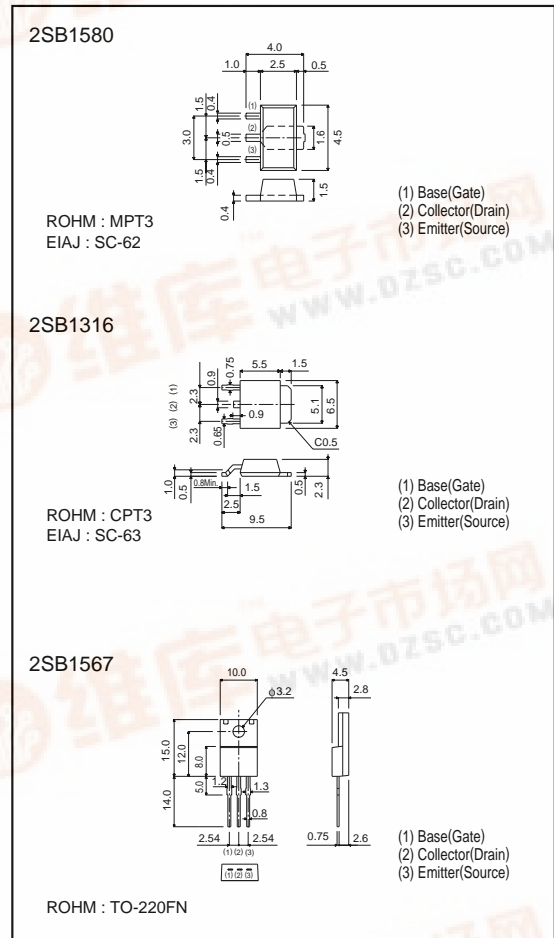
Type	2SB1580	2SB1316	2SB1567
Package	MPT3	CPT3	TO-220FN
hFE	1k - 10k	1k - 10k	1k - 10k
Marking	BN*	-	-
Code	T100	TL	-
Basic ordering unit (pieces)	1000	2500	500

* Denotes hFE

●Circuit schematic



●External dimensions (Units : mm)



●Electrical characteristics (Ta = 25°C)

Parameter	Symbol	Min.	Typ.	Max.	Unit	Conditions
Collector-base breakdown voltage	BV _{CB0}	-100	-	-	V	I _C = -50μA
Collector-emitter breakdown voltage	BV _{CE0}	-100	-	-	V	I _C = -5mA
Collector cutoff current	I _{CB0}	-	-	-10	μA	V _{CB} = -100V
Emitter cutoff current	I _{EB0}	-	-	-3	mA	V _{EB} = -7V
Collector-emitter saturation voltage	V _{CE(sat)}	-	-	-1.5	V	I _C /I _B = -1A/-1mA
DC current transfer ratio	hFE	1000	-	10000	-	V _{CE} = -2V, I _C = -1A
Output capacitance	C _{ob}	-	35	-	pF	V _{CB} = -10V, I _E = 0A, f = 1MHz

* Measured using pulse current.