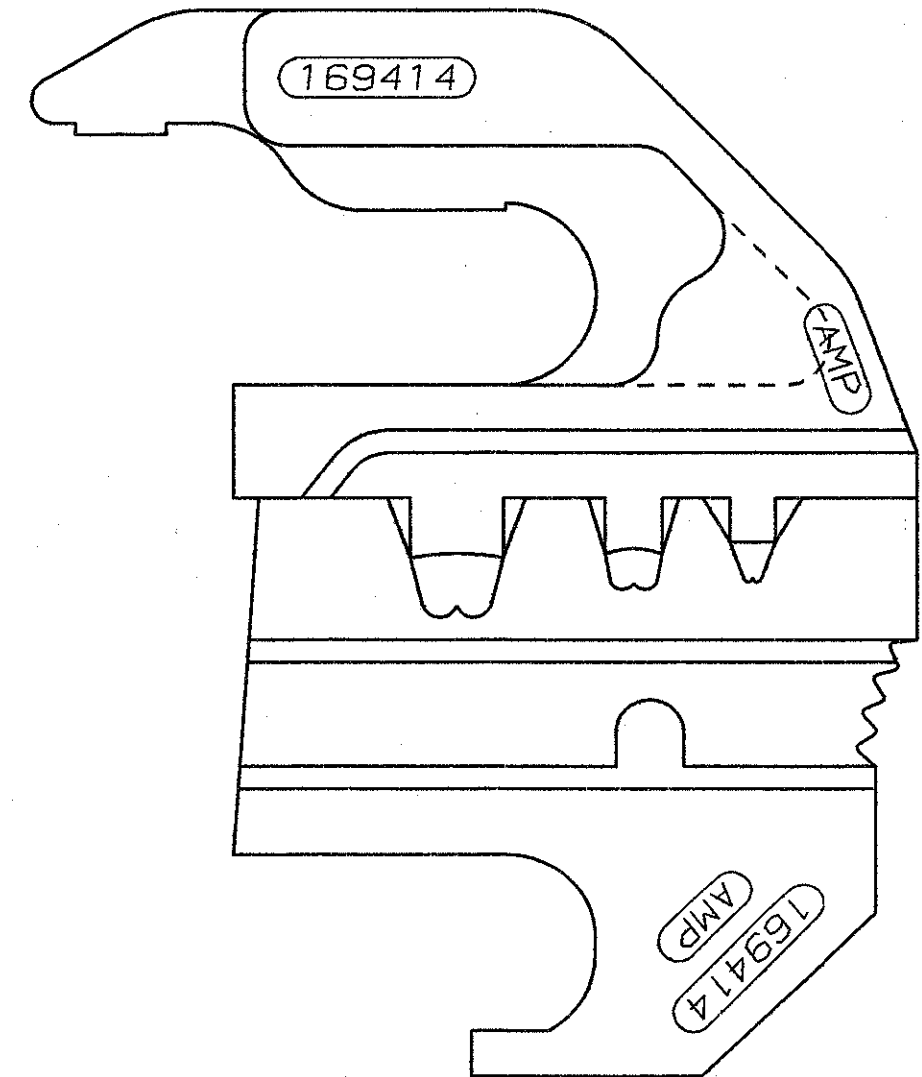
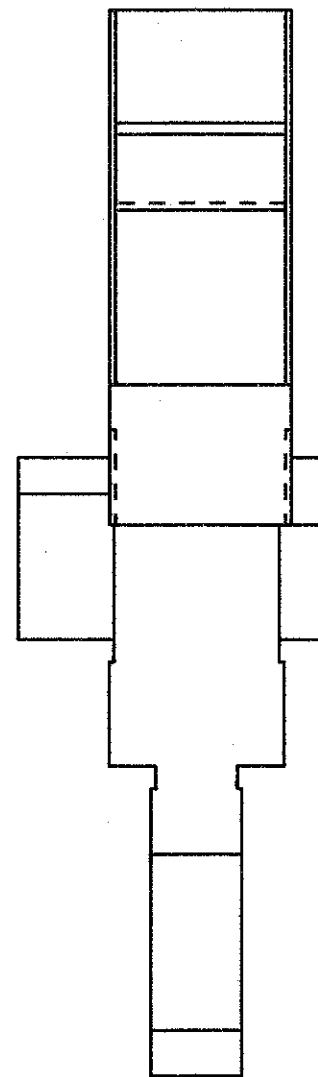
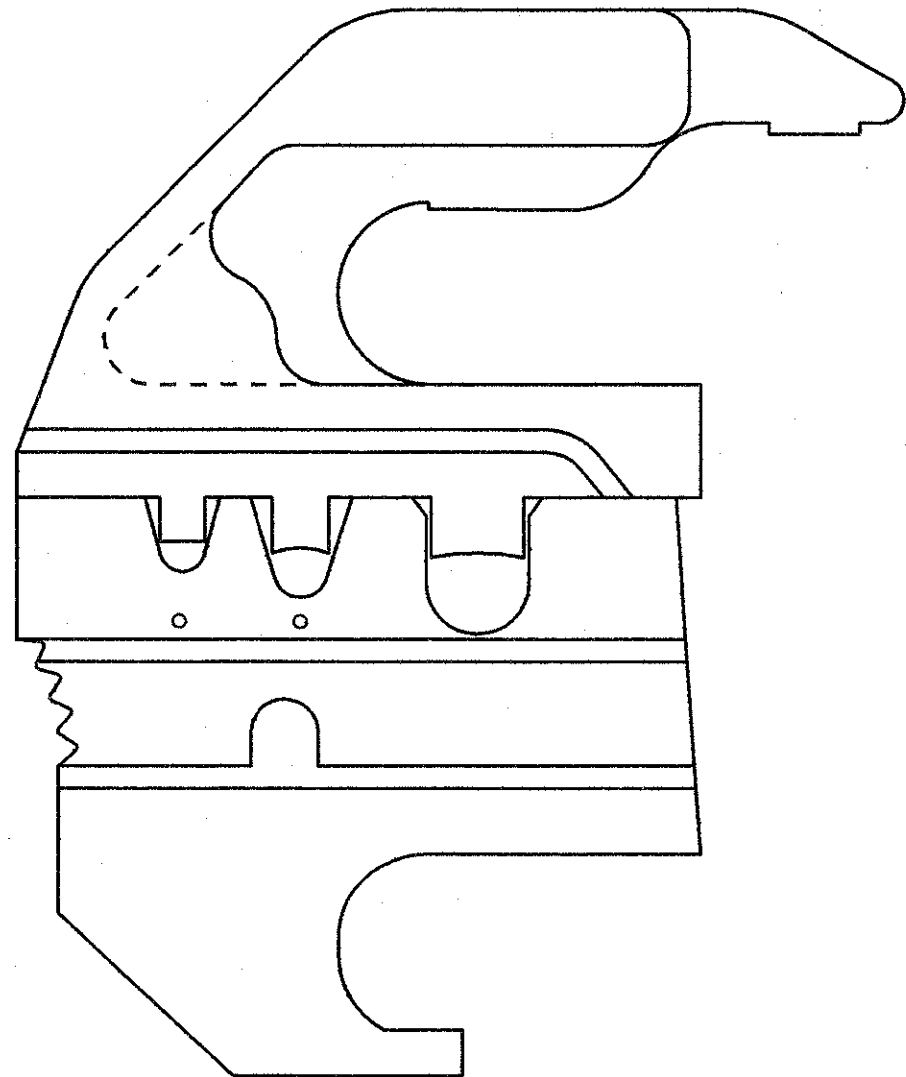


	0,2	0,75	1,5		
	III+	XII			
	0,6	1,5	3,0		

DO NOT SCALE
DIMENSIONS IN mm

METRIC

THIRD ANGLE
PROJECTION



PROF	WIRE RANGE	INS. RANGE	TERMINAL
1	0,2-0,6	1,15-1,8	-
2	0,75-1,5	2,0-2,55	-
3	1,5-3,0	3,4-4,0	-

	BLACK FINISH	STEEL MATERIAL	169414-0 PARTNUMBER
CUSTOMER DRAWING	AMP AMP-HOLLAND B.V. 's-Hertogenbosch, The Netherlands.		
	THIS DRAWING IS UNPUBLISHED RELEASED FOR PUBLICATION , 19		
FOR REFERENCE ONLY WILL NOT BE UPDATED	© COPYRIGHT 19- BY AMP-HOLLAND B.V. ALL INTERNATIONAL RIGHTS RESERVED. AMP PRODUCTS MAY BE COVERED BY U.S. AND FOREIGN PATENTS AND/OR PATENTS PENDING.		
DR. P. BEIJNON	DATE 20-3-89	WIRE RANGE -	NAME DIE SET
CHK. R. VOS	DATE -	INSUL. RANGE -	FOR TYPE III/XII CONT.
APP. L.V. SOEST	DATE -	SIZE A3	SHEET 1 OF -
		DWG. No.	C-169414
			REV. DATE D M Y 20 3 89
			REV. LTR. 0

8 | 7 | 6 | 5 | 4 | 3 | 2 | 1