

H11J1X, H11J2X, H11J3X, H11J4X, H11J5X  
H11J1, H11J2, H11J3, H11J4, H11J5



**OPTICALLY COUPLED BILATERAL SWITCH NON-ZERO CROSSING TRIAC**

**APPROVALS**

- UL recognised, File No. E91231

**'X' SPECIFICATION APPROVALS**

- VDE 0884 in 2 available lead forms : -  
- STD  
- Gform

**DESCRIPTION**

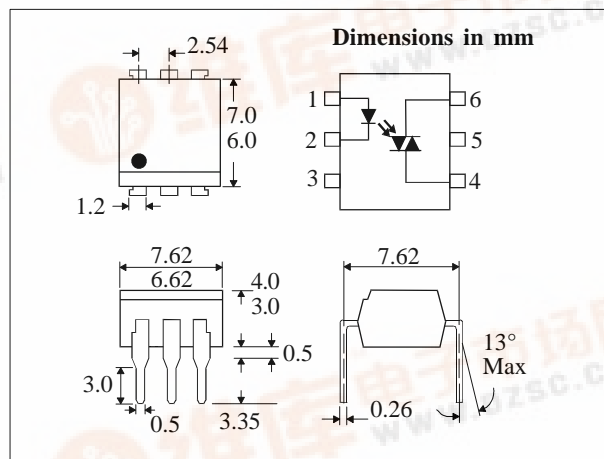
The H11J\_ series are optically coupled isolators consisting of a Gallium Arsenide infrared emitting diode coupled with a light activated silicon bilateral switch performing the functions of a triac mounted in a standard 6 pin dual-in-line package.

**FEATURE**

- Options :-  
10mm lead spread - add G after part no.  
Surface mount - add SM after part no.  
Tape&reel - add SMT&R after part no.
- High Isolation Voltage (5.3kV<sub>RMS</sub>, 7.5kV<sub>PK</sub>)
- 250V Peak Blocking Voltage
- All electrical parameters 100% tested
- Custom electrical selections available

**APPLICATIONS**

- CRTs
- Power Triac Driver
- Motors
- Consumer appliances
- Printers



**ABSOLUTE MAXIMUM RATINGS (25 °C unless otherwise noted)**

Storage Temperature	-40°C-+150°C
Operating Temperature	-40°C-+100°C
Lead Soldering Temperature	260°C
(1.6mm from case for 10 seconds)	
Input-to-output Isolation Voltage (Pk)	7500 Vac
(60 Hz , 1sec. duration)	

**INPUT DIODE**

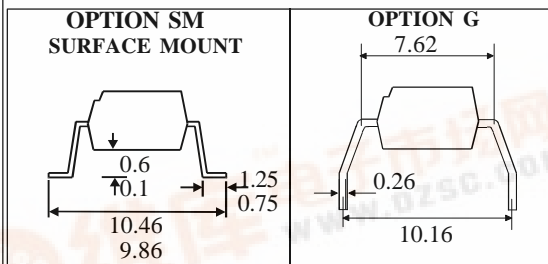
Forward Current	50mA
Reverse Voltage	6V
Power Dissipation	70mW
(derate linearly 0.93mW/°C above 25°C)	

**OUTPUT PHOTO TRIAC**

Off-State Output Terminal Voltage	250V
RMS Forward Current	100mA
Forward Current (Peak)	1A
Power Dissipation	300mW
(derate linearly 4.0mW/°C above 25°C)	

**POWER DISSIPATION**

Total Power Dissipation	330mW
(derate linearly 4.4mW/°C above 25°C)	



**ISOCOM COMPONENTS LTD**  
Unit 25B, Park View Road West,  
Park View Industrial Estate, Brenda Road  
Hartlepool, Cleveland, TS25 1YD  
Tel: (01429) 863609 Fax :(01429) 863581

**ISOCOM INC**  
1024 S. Greenville Ave, Suite 240,  
Allen, TX 75002 USA  
Tel: (214)495-0755 Fax: (214)495-0901  
e-mail info@isocom.com  
http://www.isocom.com



**ELECTRICAL CHARACTERISTICS (  $T_A = 25^\circ\text{C}$  Unless otherwise noted )**

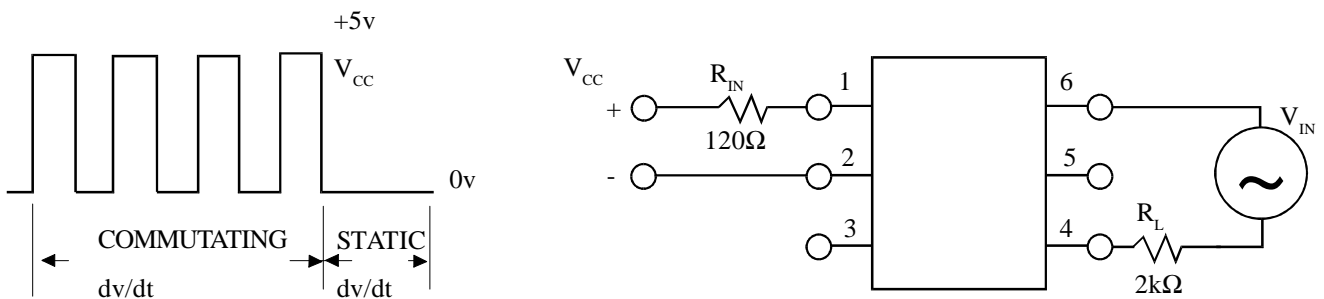
PARAMETER		MIN	TYP	MAX	UNITS	TEST CONDITION
Input	Forward Voltage ( $V_F$ ) Reverse Current ( $I_R$ )		1.2	1.5 100	V $\mu\text{A}$	$I_F = 10\text{mA}$ $V_R = 6\text{V}$
Output	Peak Off-state Current ( $I_{\text{DRM}}$ ) Peak Blocking Voltage ( $V_{\text{DRM}}$ ) On-state Voltage ( $V_{\text{TM}}$ ) Critical rate of rise of off-state Voltage ( $dv/dt$ ) ( note 1 ) Critical rate of rise of commutating Voltage ( $dv/dt$ ) ( note 1 )	250	1.5	100 3.0	nA V V	$V_{\text{DRM}} = 250\text{V}$ (note 1) $I_{\text{DRM}} = 100\text{nA}$ $I_{\text{TM}} = 100\text{mA}$ ( peak )
Coupled	Input Current to Trigger ( $I_{\text{FT}}$ ) (note 2 ) H11J1, H11J3 H11J2, H11J4 H11J5			10 15 25	mA mA mA	$V_D = 3\text{V}$ ( note 2 )
	Holding Current , either direction ( $I_H$ )		100		$\mu\text{A}$	
	Input to Output Isolation Voltage $V_{\text{ISO}}$	5300 7500			$V_{\text{RMS}}$ $V_{\text{PK}}$	See note 3 See note 3

Note 1. Test voltage must be applied within  $dv/dt$  rating.

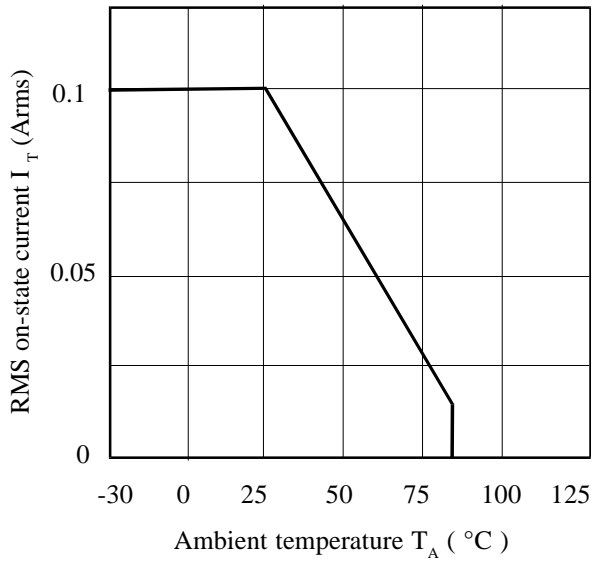
Note 2. Guaranteed to trigger at an  $I_F$  value less than or equal to max.  $I_{\text{FT}}$ , recommended  $I_F$  lies between Rated  $I_{\text{FT}}$  and absolute max.  $I_{\text{FT}}$ .

Note 3. Measured with input leads shorted together and output leads shorted together.

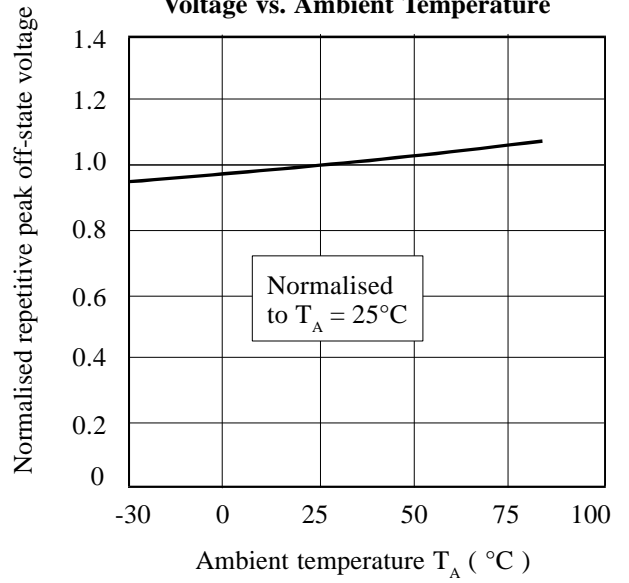
**FIGURE 1**



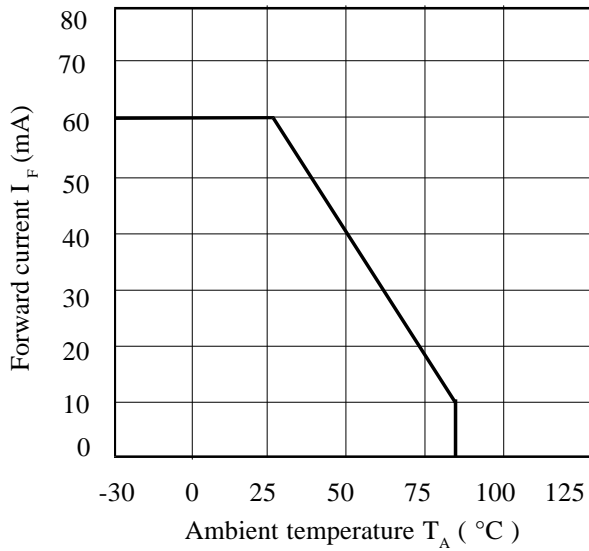
**RMS On-state Current vs. Ambient Temperature**



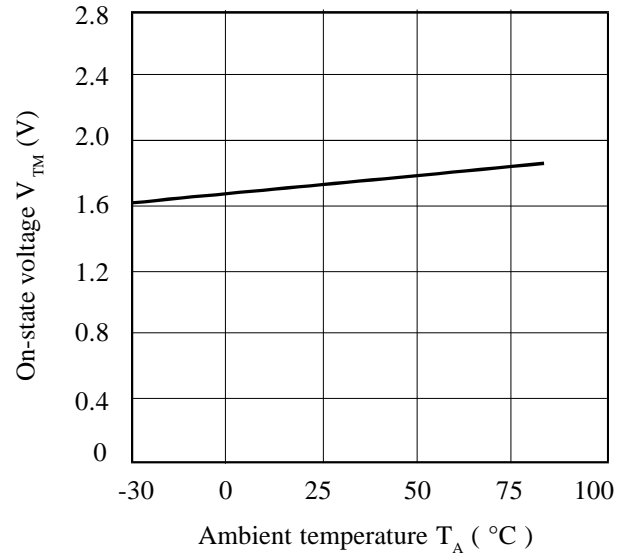
**Normalised Repetitive Peak Off-state Voltage vs. Ambient Temperature**



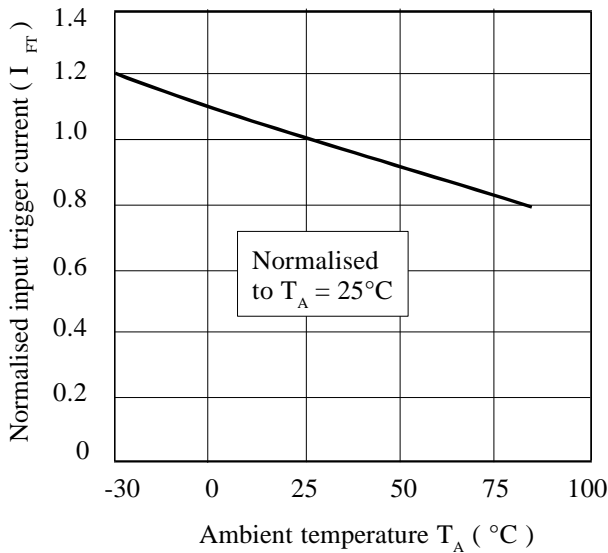
**Forward Current vs. Ambient Temperature**



**On-state Voltage vs. Ambient Temperature**



**Normalised Input Trigger Current vs. Ambient Temperature**



**On-state Current vs. On-state Voltage**

