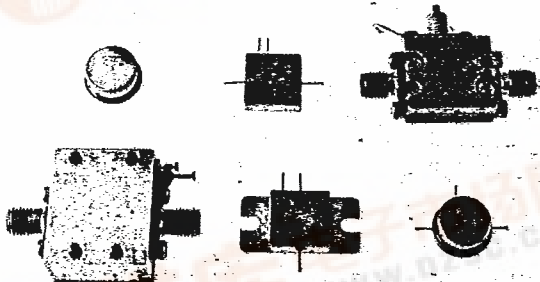


# AH-34

T-74-09-01



## 100 to 2000 MHz TO-8 Cascadable Amplifier

- High Gain: +16.0dB
- Wideband: 100-2000MHz
- Power Output: +7.0dBm
- Various Package Options (see photo)  
Surface Mounted (SMT-8), Flatpack with flange (FPF), Connectorized (CAH), Connectorized Flatpack (CFP), Flatpack (FP), and TO-8 (AH)

### Electrical Specifications

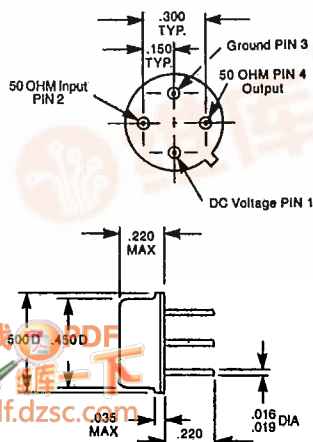
Measured in a 50-ohm system at +15 Vdc nominal

Characteristic	Typical			Specifications	Maximum Ratings
	25°C	0°C to +50°C	-54°C to +85°C		
Frequency (MHz Min.)	100-2000	100-2000	100-2000		Ambient Operating Temperature ..... -54°C to +100°C
Small Signal Gain (dB Min.)	+15.5	+15.0	+14.0		Storage Temperature ... -62°C to +125°C
Gain Flatness (dB Max.)	±0.5	±0.7	±1.0		Maximum Case Temperature ..... +125°C
Noise Figure (dB Max.)	+6.0	+6.5	+7.0		Maximum DC Voltage ..... +17.0V
Power Output @ 1 dB Compression (dBm Min.)	+7.0	+6.0	+5.0		Maximum Continuous RF Input Power ..... +10.0dBm
Two Tone 3rd Order Intercept Point (dBm Min.)	+18.0	+15.5	+15.0		Maximum Short Term RF Input Power ..... +50.0 mW (1 minute Max.)
Two Tone 2nd Order Intercept Point (dBm Min.)	+28.0	+25.0	+25.0		Maximum Peak Power ..... +0.5W (3µseconds Max.)
One Tone 2nd Harmonic Intercept Point (dBm Min.)	+33.0	+35.0	+30.0		"X" Series Burn-In Temperature ..... +125°C
Input/Output VSWR (Max.)	<1.6:1	2.0:1	2.0:1		Weight ..... +2.5 grams Max.
DC Current at 15 V (mA Max.)	+38.0	+40.0	+42.0		

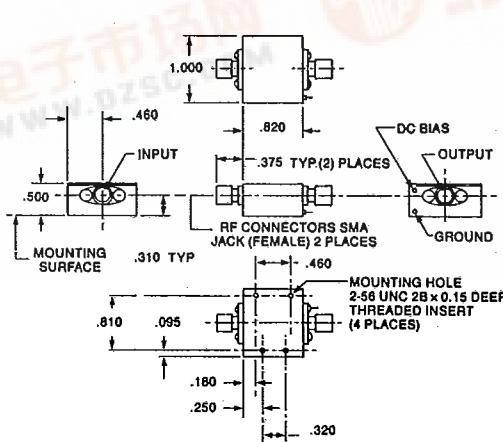
### Outline Drawings

(For additional package configurations, see Section 9)

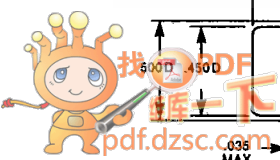
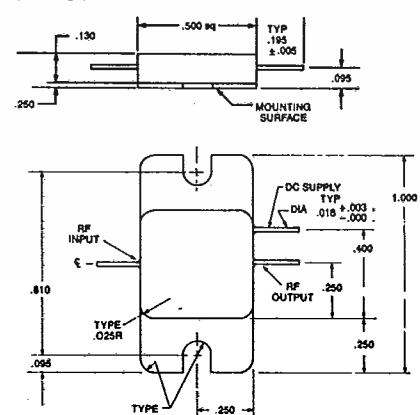
AH-34



CAH-34



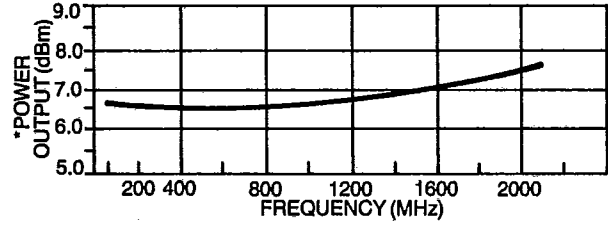
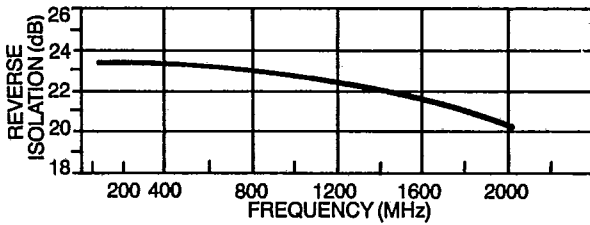
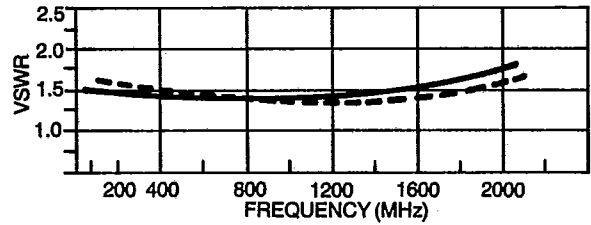
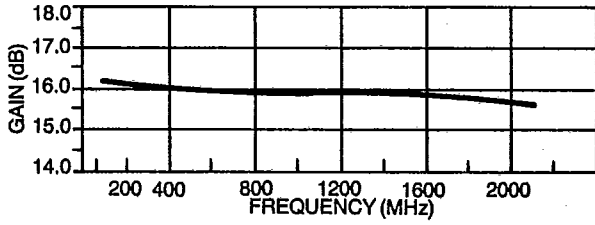
FPF-34



# AH-34

## Typical Performance

IN ———  
OUT - - - -



\*AT 1dB GAIN COMPRESSION

