

## 450MHz, Low Power, Current Feedback Video Operational Amplifier

The HFA1109 is a high speed, low power, current feedback amplifier built with Intersil's proprietary complementary bipolar UHF-1 process. This amplifier features a unique combination of power and performance specifically tailored for video applications.

The HFA1109 is a standard pinout op amp. It is a higher performance, drop-in replacement (no feedback resistor change required) for the CLC409.

If a comparably performing op amp with an output disable function (useful for video multiplexing) is required, please refer to the HFA1149 data sheet..

## Ordering Information

PART NUMBER	PART MARKING	TEMP. RANGE (°C)	PACKAGE	PKG. DWG. #
HFA1109IB	1109IB	-40 to +85	8 Ld SOIC (150MIL)	M8.15
HFA1109IBZ (Note 1)	HFA1109 IBZ	-40 to +85	8 Ld SOIC (150MIL) (Pb-free)	M8.15
HFA1109IBZ96 (Note 1)	HFA1109 IBZ	-40 to +85	8 Ld SOIC (150MIL) (Pb-free)	M8.15
HFA11XXEVAL (Note 2)	DIP Evaluation Board for High Speed Op Amps			

### NOTES:

1. Intersil Pb-free plus anneal products employ special Pb-free material sets; molding compounds/die attach materials and 100% matte tin plate termination finish, which are RoHS compliant and compatible with both SnPb and Pb-free soldering operations. Intersil Pb-free products are MSL classified at Pb-free peak reflow temperatures that meet or exceed the Pb-free requirements of IPC/JEDEC J STD-020.
2. Requires a SOIC-to-DIP adapter. See "Evaluation Board" section inside.

## Features

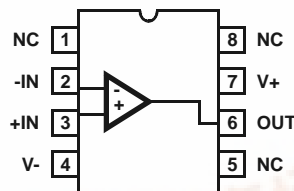
- Wide - 3dB Bandwidth ( $A_V = +2$ ) . . . . . 450MHz
- Gain Flatness (To 250MHz) . . . . . 0.8dB
- Very Fast Slew Rate ( $A_V = +2$ ) . . . . . 1100V/ $\mu$ s
- High Input Impedance . . . . . 1.7M $\Omega$
- Differential Gain/Phase . . . . . 0.02%/0.02°
- Low Supply Current . . . . . 10mA
- Pb-Free Plus Anneal Available (RoHS Compliant)

## Applications

- Professional Video Processing
- Video Switchers and Routers
- Medical Imaging
- PC Multimedia Systems
- Video Distribution Amplifiers
- Flash Converter Drivers
- Radar/IF Processing

## Pinout

HFA1109  
(8 LD SOIC)  
TOP VIEW



## HFA1109

### Absolute Maximum Ratings

Voltage Between V+ and V- .....12V  
 DC Input Voltage .....  $V_{SUPPLY}$   
 Differential Input Voltage ..... .8V  
 Output Current (Note 4) ..... Short Circuit Protected  
 30mA Continuous  
 60mA  $\leq$  50% Duty Cycle  
 ESD Rating  
 Human Body Model (Per MIL-STD-883 Method 3015.7) .....1400V  
 Charged Device Model (Per EOS/ESD DS5.3, 4/14/93) .....2000V  
 Machine Model (Per EIAJ ED-4701 Method C-111) .....50V

### Thermal Information

Thermal Resistance (Typical, Note 3)  $\theta_{JA}$  (°C/W)  
 8 Lead SOIC ..... 170  
 Maximum Junction Temperature (Die) ..... +175°C  
 Maximum Junction Temperature (Plastic Package) ..... +150°C  
 Maximum Storage Temperature Range ..... -65°C to +150°C  
 Pb-free reflow profile ..... see link below  
<http://www.intersil.com/pbfree/Pb-FreeReflow.asp>

### Operating Conditions

Temperature Range ..... -40°C to +85°C

**CAUTION:** Stresses above those listed in "Absolute Maximum Ratings" may cause permanent damage to the device. This is a stress only rating and operation of the device at these or any other conditions above those indicated in the operational sections of this specification is not implied.

#### NOTES:

- $\theta_{JA}$  is measured in free air with the component mounted on a high effective thermal conductivity test board with "direct attach" features. See Tech Brief TB379.
- Output is short circuit protected to ground. Brief short circuits to ground will not degrade reliability, however continuous (100% duty cycle) output current must not exceed 30mA for maximum reliability.

### Electrical Specifications $V_{SUPPLY} = \pm 5V$ , $A_V = +2$ , $R_F = 250\Omega$ , $R_L = 100\Omega$ , Unless Otherwise Specified.

PARAMETER	TEST CONDITIONS	(NOTE 5) TEST LEVEL	TEMP. (°C)	MIN	TYP	MAX	UNITS
<b>INPUT CHARACTERISTICS</b>							
Input Offset Voltage		A	25	-	1	5	mV
		A	Full	-	2	8	mV
Average Input Offset Voltage Drift		B	Full	-	10	-	$\mu V/^\circ C$
Input Offset Voltage Common-Mode Rejection Ratio	$DV_{CM} = \pm 2V$	A	25	47	50	-	dB
		A	Full	45	48	-	dB
Input Offset Voltage Power Supply Rejection Ratio	$DV_{PS} = \pm 1.25V$	A	25	50	53	-	dB
		A	Full	47	51	-	dB
Non-Inverting Input Bias Current		A	25	-	4	10	$\mu A$
		A	Full	-	5	15	$\mu A$
Non-Inverting Input Bias Current Drift		B	Full	-	30	-	nA/°C
Non-Inverting Input Bias Current Power Supply Sensitivity	$DV_{PS} = \pm 1.25V$	A	25	-	0.5	1	$\mu A/V$
		A	Full	-	0.5	3	$\mu A/V$
Inverting Input Bias Current		A	25	-	2	10	$\mu A$
		A	Full	-	3	15	$\mu A$
Inverting Input Bias Current Drift		B	Full	-	40	-	nA/°C
Inverting Input Bias Current Common-Mode Sensitivity	$DV_{CM} = \pm 2V$	A	25	-	3	6	$\mu A/V$
		A	Full	-	3	8	$\mu A/V$
Inverting Input Bias Current Power Supply Sensitivity	$DV_{PS} = \pm 1.25V$	A	25	-	1.6	5	$\mu A/V$
		A	Full	-	1.6	8	$\mu A/V$
Non-Inverting Input Resistance	$DV_{CM} = \pm 2V$	A	25, 85	0.8	1.7	-	M $\Omega$
		A	-40	0.5	1.4	-	M $\Omega$
Inverting Input Resistance		B	25	-	60	-	$\Omega$

## HFA1109

### Electrical Specifications $V_{SUPPLY} = \pm 5V$ , $A_V = +2$ , $R_F = 250\Omega$ , $R_L = 100\Omega$ , Unless Otherwise Specified. (Continued)

PARAMETER	TEST CONDITIONS	(NOTE 5) TEST LEVEL	TEMP. (°C)	MIN	TYP	MAX	UNITS
Input Capacitance		B	25	-	1.6	-	pF
Input Voltage Common Mode Range (Implied by V <sub>IO</sub> CMRR, +R <sub>IN</sub> , and -I <sub>BIAS</sub> CMS tests)		A	Full	±2	±2.5	-	V
Input Noise Voltage Density (Note 6)	f = 100kHz	B	25	-	4	-	nV/√Hz
Non-Inverting Input Noise Current Density (Note 4)		B	25	-	2.4	-	pA/√Hz
Inverting Input Noise Current Density (Note 4)	f = 100kHz	B	25	-	40	-	pA/√Hz
TRANSFER CHARACTERISTICS							
Open Loop Transimpedance Gain (Note 6)		B	25	-	500	-	kΩ
Minimum Stable Gain		B	Full	-	1	-	V/V
AC CHARACTERISTICS							
-3dB Bandwidth (V <sub>OUT</sub> = 0.2V <sub>P-P</sub> , Note 6)	A <sub>V</sub> = -1, R <sub>F</sub> = 200Ω	B	25	300	375	-	MHz
		B	Full	290	360	-	MHz
	A <sub>V</sub> = +1, +R <sub>S</sub> = 550Ω (PDIP), +R <sub>S</sub> = 700Ω (SOIC)	B	25	280	330	-	MHz
		B	Full	260	320	-	MHz
	A <sub>V</sub> = +2	B	25	390	450	-	MHz
		B	Full	350	410	-	MHz
Gain Peaking	A <sub>V</sub> = +2, V <sub>OUT</sub> = 0.2V <sub>P-P</sub>	B	25	-	0	0.2	dB
		B	Full	-	0	0.5	dB
Gain Flatness (A <sub>V</sub> = +2, V <sub>OUT</sub> = 0.2V <sub>P-P</sub> , Note 6)	To 125MHz	B	25	-1.0	-0.45	-	dB
		B	Full	-1.1	-0.45	-	dB
	To 200MHz	B	25	-1.6	-0.75	-	dB
		B	Full	-1.7	-0.75	-	dB
	To 250MHz	B	25	-1.9	-0.85	-	dB
		B	Full	-2.2	-0.85	-	dB
Gain Flatness (A <sub>V</sub> = +1, +R <sub>S</sub> = 550Ω (PDIP), +R <sub>S</sub> = 700Ω (SOIC), V <sub>OUT</sub> = 0.2V <sub>P-P</sub> , (Note 6)	To 125MHz	B	25	±0.3	±0.1	-	dB
		B	Full	±0.4	±0.1	-	dB
	To 200MHz	B	25	±0.8	±0.35	-	dB
		B	Full	±0.9	±0.35	-	dB
	To 250MHz	B	25	±1.3	±0.6	-	dB
		B	Full	±1.4	±0.6	-	dB
OUTPUT CHARACTERISTICS							
Output Voltage Swing, Unloaded (Note 6)	A <sub>V</sub> = -1, R <sub>L</sub> = Infinity	A	25	±3	±3.2	-	V
		A	Full	±2.8	±3	-	V
Output Current (Note 6)	A <sub>V</sub> = -1, R <sub>L</sub> = 75Ω	A	25, 85	±33	±36	-	mA
		A	-40	±30	±33	-	mA
Output Short Circuit Current	A <sub>V</sub> = -1	B	25	-	120	-	mA
Closed Loop Output Resistance (Note 6)	DC, A <sub>V</sub> = +1	B	25	-	0.05	-	W

## HFA1109

### Electrical Specifications $V_{\text{SUPPLY}} = \pm 5\text{V}$ , $A_V = +2$ , $R_F = 250\Omega$ , $R_L = 100\Omega$ , Unless Otherwise Specified. (Continued)

PARAMETER	TEST CONDITIONS	(NOTE 5) TEST LEVEL	TEMP. (°C)	MIN	TYP	MAX	UNITS
Second Harmonic Distortion (V <sub>OUT</sub> = 2V <sub>P-P</sub> , Note 6)	20MHz	B	25	-	-55	-	dBc
	60MHz	B	25	-	-57	-	dBc
Third Harmonic Distortion (V <sub>OUT</sub> = 2V <sub>P-P</sub> , Note 6)	20MHz	B	25	-	-68	-	dBc
	60MHz	B	25	-	-60	-	dBc
Reverse Isolation (S <sub>12</sub> )	30MHz	B	25	-	-65	-	dB
TRANSIENT CHARACTERISTICS							
Rise and Fall Times	V <sub>OUT</sub> = 0.5V <sub>P-P</sub>	B	25	-	1.1	1.3	ns
		B	Full	-	1.1	1.4	ns
Overshoot	V <sub>OUT</sub> = 0.5V <sub>P-P</sub>	B	25	-	0	2	%
		B	Full	-	0.5	5	%
Slew Rate	A <sub>V</sub> = -1, R <sub>F</sub> = 200Ω V <sub>OUT</sub> = 5V <sub>P-P</sub>	B	25	2300	2600	-	V/μs
		B	Full	2200	2500	-	V/μs
	A <sub>V</sub> = +1, V <sub>OUT</sub> = 4V <sub>P-P</sub> , +R <sub>S</sub> = 550Ω (PDIP), +R <sub>S</sub> = 700Ω (SOIC)	B	25	475	550	-	V/μs
		B	Full	430	500	-	V/μs
	A <sub>V</sub> = +2, V <sub>OUT</sub> = 5V <sub>P-P</sub>	B	25	940	1100	-	V/μs
		B	Full	800	950	-	V/μs
Settling Time (V <sub>OUT</sub> = +2V to 0V step, Note 6)	To 0.1%	B	25	-	19	-	ns
	To 0.05%	B	25	-	23	-	ns
	To 0.01%	B	25	-	36	-	ns
Overdrive Recovery Time	V <sub>IN</sub> = ±2V	B	25	-	5	-	ns
VIDEO CHARACTERISTICS							
Differential Gain (f = 3.58MHz)	R <sub>L</sub> = 150Ω	B	25	-	0.02	0.06	%
		B	Full	-	0.03	0.09	%
	R <sub>L</sub> = 75Ω	B	25	-	0.04	0.09	%
		B	Full	-	0.05	0.12	%
Differential Phase (f = 3.58MHz)	R <sub>L</sub> = 150Ω	B	25	-	0.02	0.06	°
		B	Full	-	0.02	0.06	°
	R <sub>L</sub> = 75Ω	B	25	-	0.05	0.09	°
		B	Full	-	0.06	0.13	°
POWER SUPPLY CHARACTERISTICS							
Power Supply Range		C	25	±4.5	-	±5.5	V
Power Supply Current (Note 6)		A	25	-	9.6	10	mA
		A	Full	-	10	11	mA

#### NOTES:

5. Test Level: A. Production Tested; B. Typical or Guaranteed Limit Based on Characterization; C. Design Typical for Information Only.
6. See Typical Performance Curves for more information.

## Application Information

### Optimum Feedback Resistor

Although a current feedback amplifier's bandwidth dependency on closed loop gain isn't as severe as that of a voltage feedback amplifier, there can be an appreciable decrease in bandwidth at higher gains. This decrease may be minimized by taking advantage of the current feedback amplifier's unique relationship between bandwidth and  $R_F$ . All current feedback amplifiers require a feedback resistor, even for unity gain applications, and  $R_F$ , in conjunction with the internal compensation capacitor, sets the dominant pole of the frequency response. Thus, the amplifier's bandwidth is inversely proportional to  $R_F$ . The HFA1109 design is optimized for a  $250\Omega$   $R_F$  at a gain of +2. Decreasing  $R_F$  decreases stability, resulting in excessive peaking and overshoot (Note: Capacitive feedback will cause the same problems due to the feedback impedance decrease at higher frequencies). At higher gains the amplifier is more stable, so  $R_F$  can be decreased in a trade-off of stability for bandwidth.

TABLE 1. OPTIMUM FEEDBACK RESISTOR

GAIN ( $A_{CL}$ )	$R_F$ ( $\Omega$ )	BANDWIDTH (MHz)
-1	200	400
+1	250 (+ $R_S$ = 550 $\Omega$ ) PDIP 250 (+ $R_S$ = 700 $\Omega$ ) SOIC	350
+2	250	450
+5	100	160
+10	90	70

Table 1 lists recommended  $R_F$  values, and the expected bandwidth, for various closed loop gains. For a gain of +1, a resistor (+ $R_S$ ) in series with +IN is required to reduce gain peaking and increase stability

### PC Board Layout

The frequency response of this amplifier depends greatly on the care taken in designing the PC board. **The use of low inductance components such as chip resistors and chip capacitors is strongly recommended, while a solid**

**ground plane is a must!** Attention should be given to decoupling the power supplies. A large value ( $10\mu\text{F}$ ) tantalum in parallel with a small value ( $0.1\mu\text{F}$ ) chip capacitor works well in most cases.

Terminated microstrip signal lines are recommended at the input and output of the device. Capacitance directly on the output must be minimized, or isolated as discussed in the next section.

Care must also be taken to minimize the capacitance to ground seen by the amplifier's inverting input (-IN). The larger this capacitance, the worse the gain peaking, resulting in pulse overshoot and possible instability. Thus it is recommended that the ground plane be removed under traces connected to -IN, and connections to -IN should be kept as short as possible.

### Driving Capacitive Loads

Capacitive loads, such as an A/D input, or an improperly terminated transmission line will degrade the amplifier's phase margin resulting in frequency response peaking and possible oscillations. In most cases, the oscillation can be avoided by placing a resistor ( $R_S$ ) in series with the output prior to the capacitance.

$R_S$  and  $C_L$  form a low pass network at the output, thus limiting system bandwidth well below the amplifier bandwidth. By decreasing  $R_S$  as  $C_L$  increases, the maximum bandwidth is obtained without sacrificing stability. In spite of this, bandwidth still decreases as the load capacitance increases.

### Evaluation Board

The performance of the HFA1105 may be evaluated using the HFA11XX Evaluation Board and a SOIC to DIP adaptor like the Aries Electronics Part Number 14-350000-10. The layout and schematic of the board are shown in Figure 1.

Please contact your local sales office for information. When evaluating this amplifier, the two  $510\Omega$  gain setting resistors on the evaluation board should be changed to  $250\Omega$ .

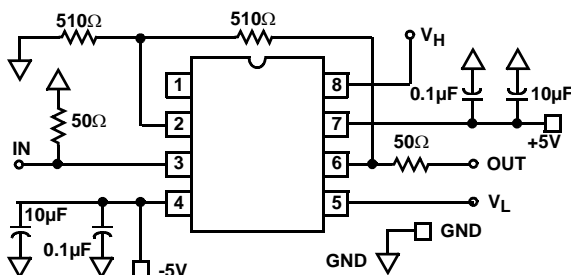


FIGURE 1A. BOARD SCHEMATIC

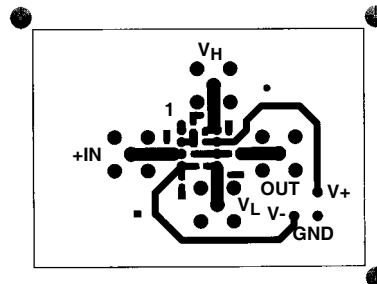


FIGURE 1B. TOP LAYOUT

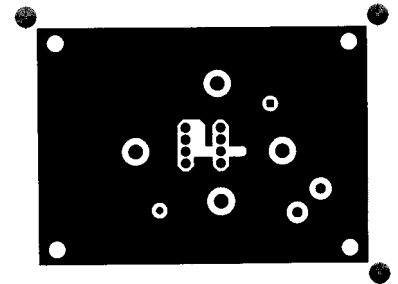


FIGURE 1C. BOTTOM LAYOUT

FIGURE 1. EVALUATION BOARD SCHEMATICS AND LAYOUT

## HFA1109

**Typical Performance Curves**  $V_{\text{SUPPLY}} = \pm 5\text{V}$ ,  $T_A = +25^\circ\text{C}$ ,  $R_F = \text{Value From the Optimum Feedback Resistor Table}$ ,  $R_L = 100\Omega$ , Unless Otherwise Specified

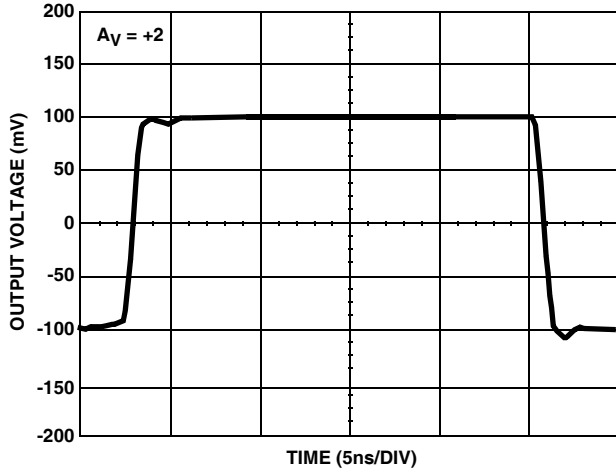


FIGURE 2. SMALL SIGNAL PULSE RESPONSE

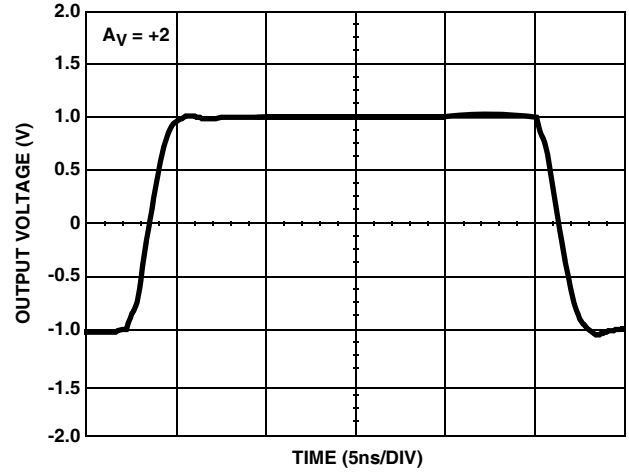


FIGURE 3. LARGE SIGNAL PULSE RESPONSE

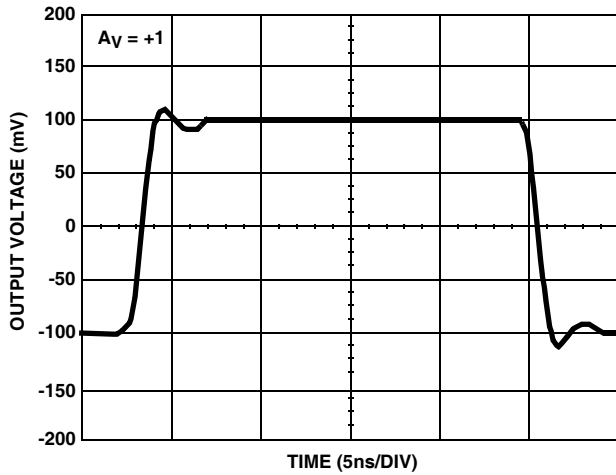


FIGURE 4. SMALL SIGNAL PULSE RESPONSE

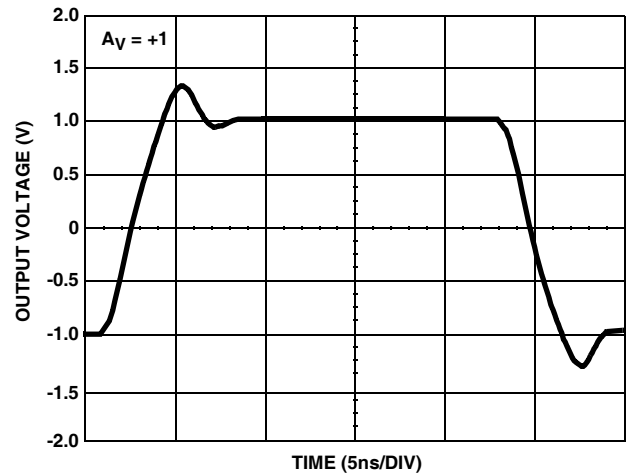


FIGURE 5. LARGE SIGNAL PULSE RESPONSE

**Typical Performance Curves**  $V_{\text{SUPPLY}} = \pm 5\text{V}$ ,  $T_A = +25^\circ\text{C}$ ,  $R_F = \text{Value From the Optimum Feedback Resistor Table}$ ,  $R_L = 100\Omega$ , Unless Otherwise Specified (Continued)

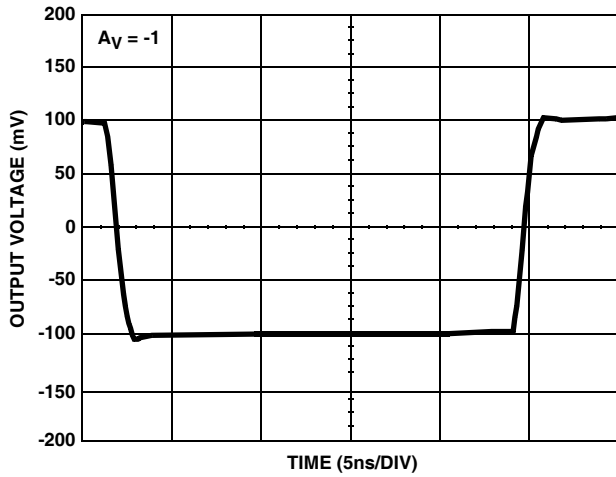


FIGURE 6. SMALL SIGNAL PULSE RESPONSE

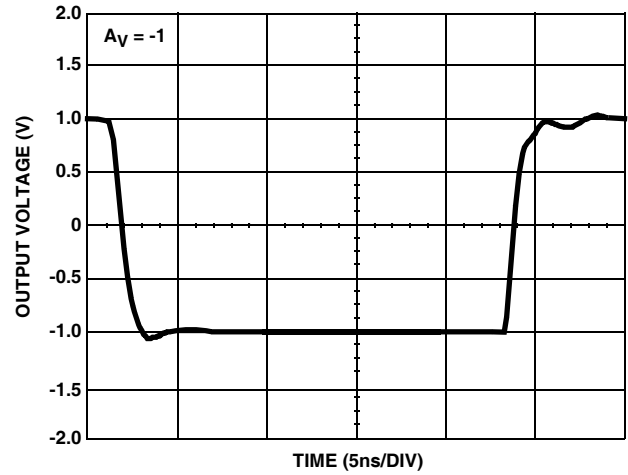


FIGURE 7. LARGE SIGNAL PULSE RESPONSE

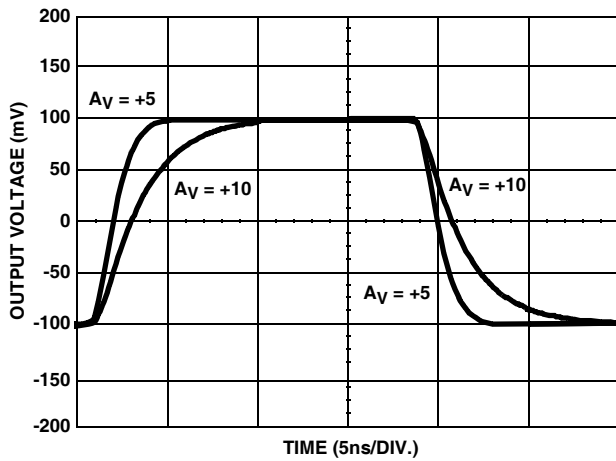


FIGURE 8. SMALL SIGNAL PULSE RESPONSE

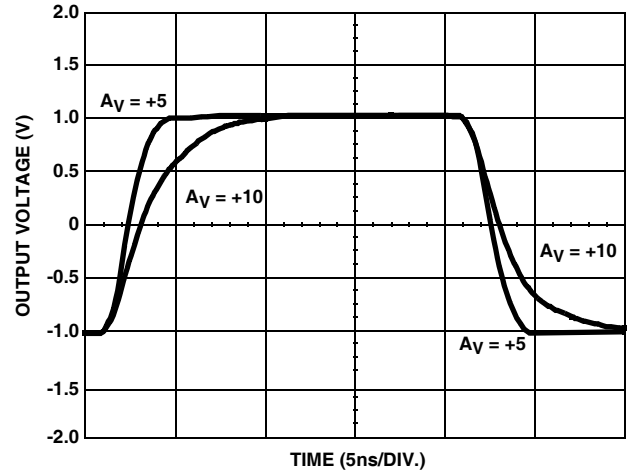


FIGURE 9. LARGE SIGNAL PULSE RESPONSE

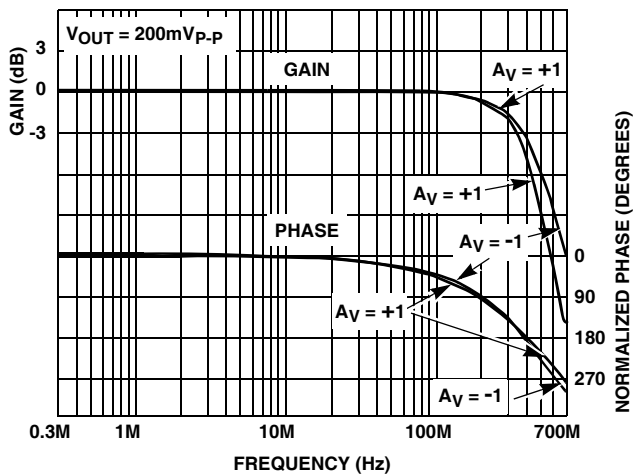


FIGURE 10. FREQUENCY RESPONSE

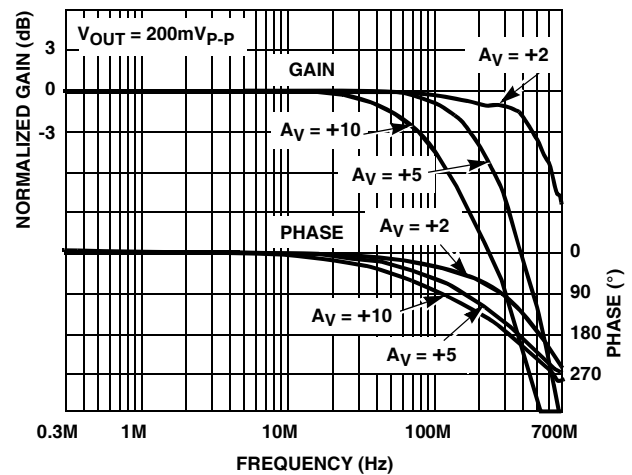


FIGURE 11. FREQUENCY RESPONSE

**Typical Performance Curves**  $V_{SUPPLY} = \pm 5V$ ,  $T_A = +25^\circ C$ ,  $R_F =$  Value From the Optimum Feedback Resistor Table,  $R_L = 100\Omega$ , Unless Otherwise Specified (Continued)

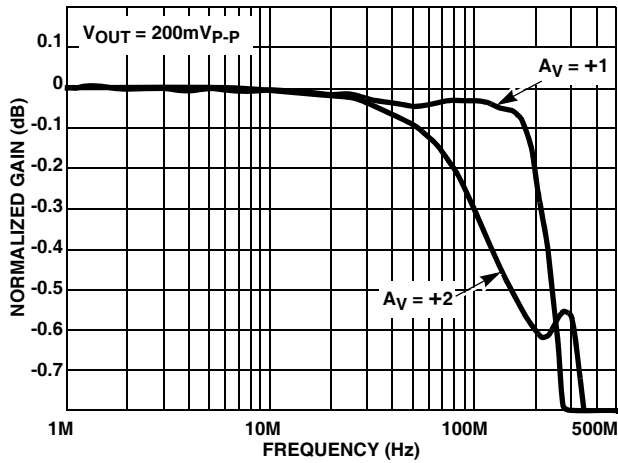


FIGURE 12. GAIN FLATNESS

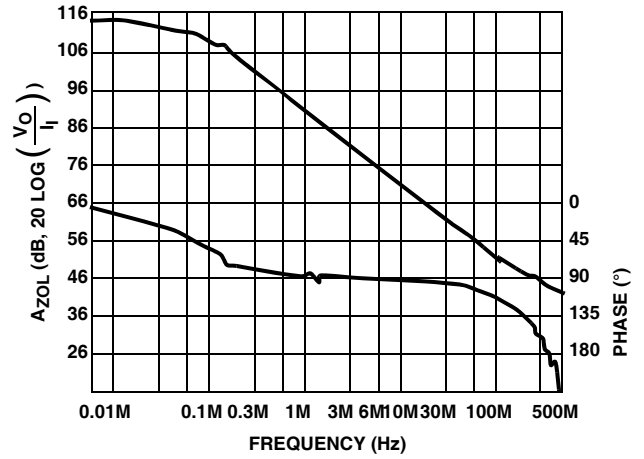
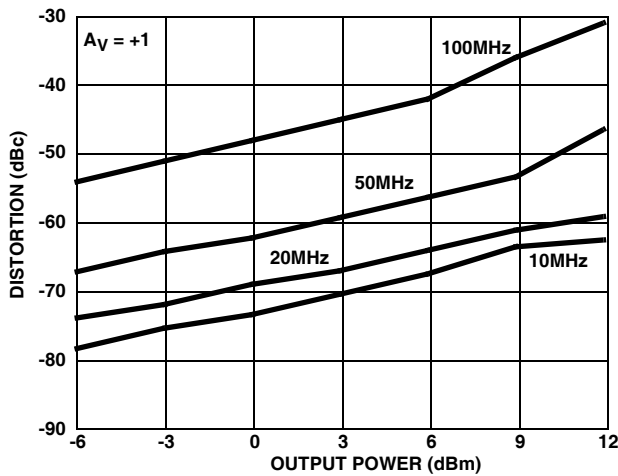
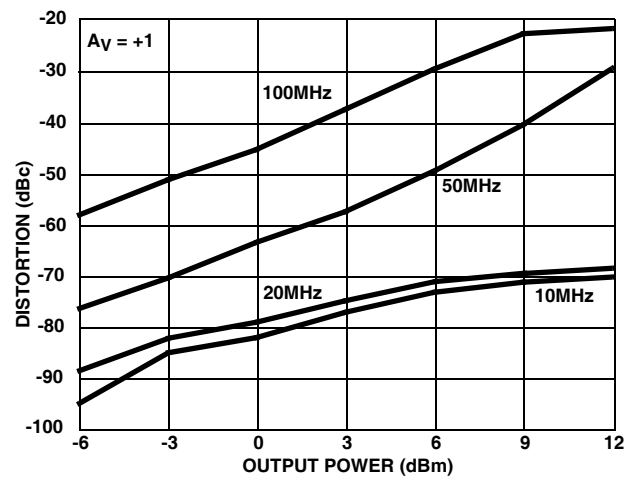
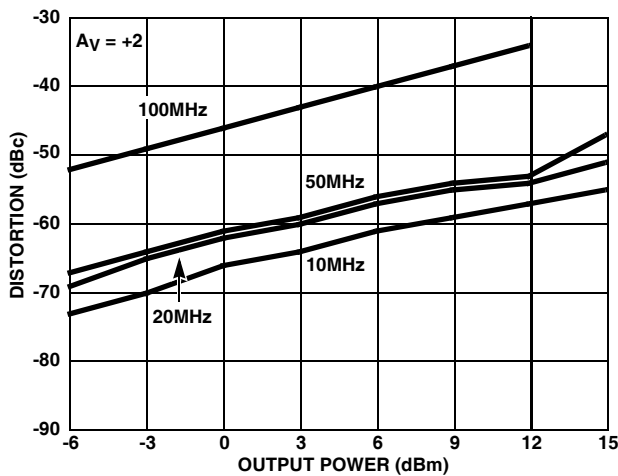
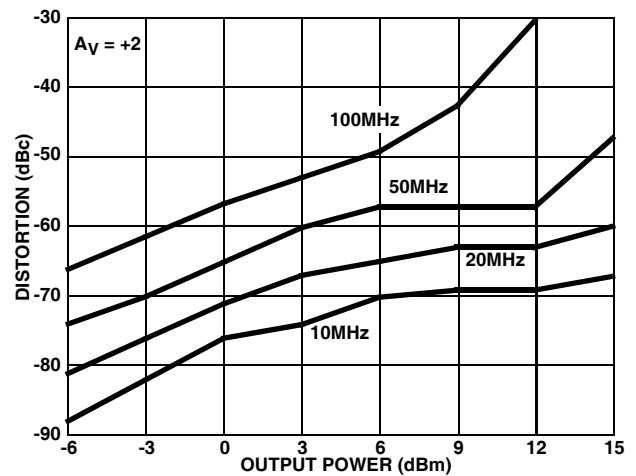


FIGURE 13. OPEN LOOP TRANSIMPEDANCE

FIGURE 14. 2nd HARMONIC DISTORTION vs  $P_{OUT}$ FIGURE 15. 3rd HARMONIC DISTORTION vs  $P_{OUT}$ FIGURE 16. 2nd HARMONIC DISTORTION vs  $P_{OUT}$ FIGURE 17. 3rd HARMONIC DISTORTION vs  $P_{OUT}$



**Typical Performance Curves**  $V_{\text{SUPPLY}} = \pm 5\text{V}$ ,  $T_A = +25^\circ\text{C}$ ,  $R_F = \text{Value From the Optimum Feedback Resistor Table}$ ,  $R_L = 100\Omega$ , Unless Otherwise Specified (Continued)

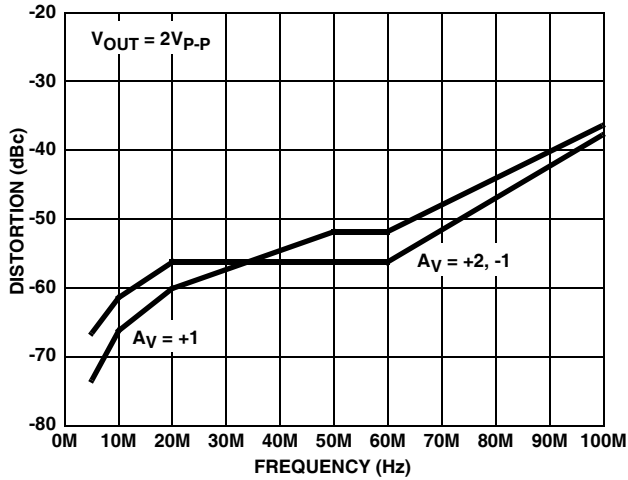


FIGURE 18. 2nd HARMONIC DISTORTION vs FREQUENCY

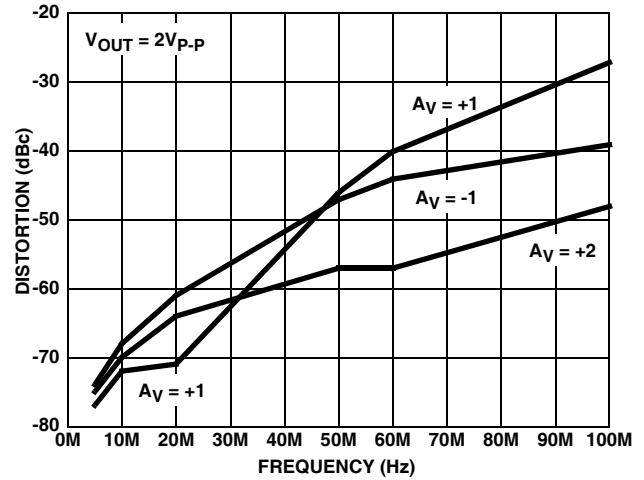


FIGURE 19. 3rd HARMONIC DISTORTION vs FREQUENCY

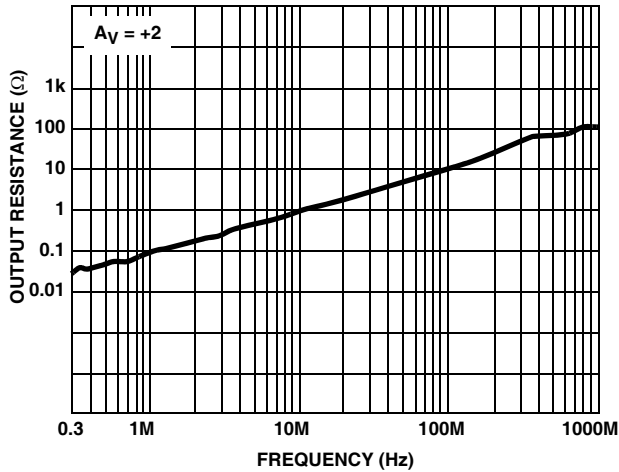


FIGURE 20. CLOSED LOOP OUTPUT RESISTANCE

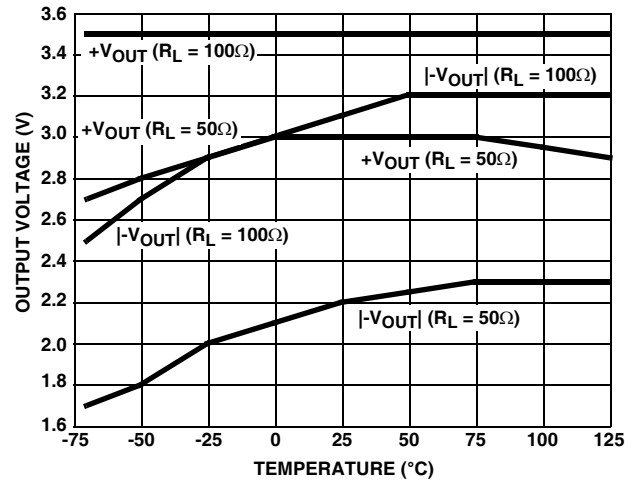


FIGURE 21. OUTPUT VOLTAGE vs TEMPERATURE

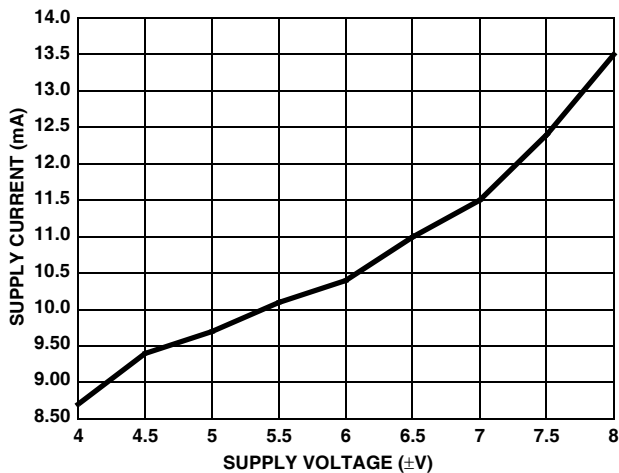


FIGURE 22. SUPPLY CURRENT vs SUPPLY VOLTAGE

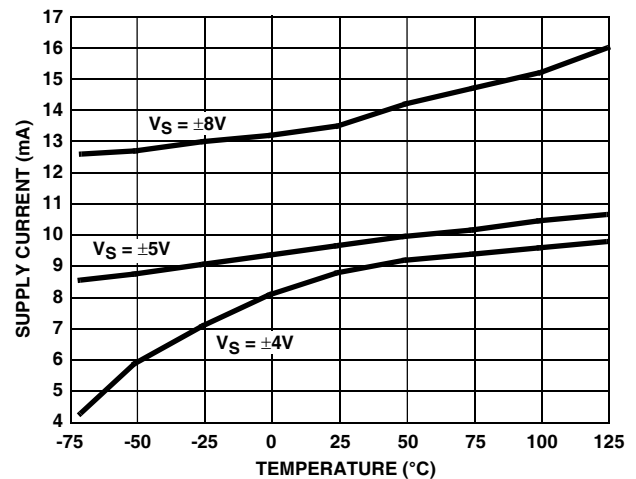


FIGURE 23. SUPPLY CURRENT vs TEMPERATURE

**Typical Performance Curves**  $V_{\text{SUPPLY}} = \pm 5\text{V}$ ,  $T_A = +25^\circ\text{C}$ ,  $R_F = \text{Value From the Optimum Feedback Resistor Table}$ ,  $R_L = 100\Omega$ , Unless Otherwise Specified **(Continued)**

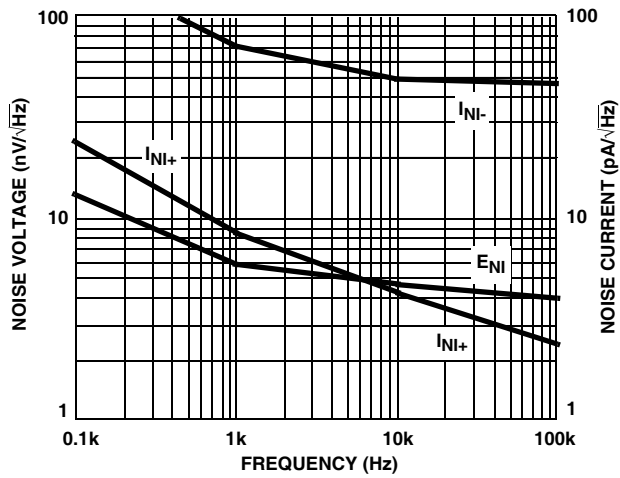


FIGURE 24. INPUT NOISE CHARACTERISTICS

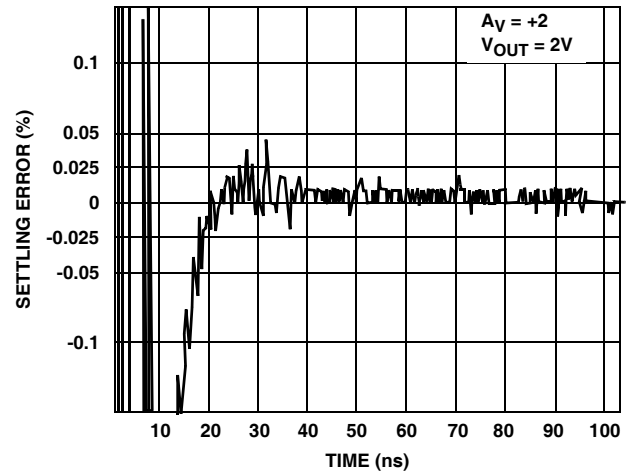


FIGURE 25. SETTLING RESPONSE

## HFA1109

### Die Characteristics

#### DIE DIMENSIONS:

59milsx80milsx19mils  
1500 $\mu$ m x 2020 $\mu$ m x 483 $\mu$ m

#### METALLIZATION:

Type: Metal 1: AlCu(2%)/TiW  
Thickness: Metal 1: 8k $\text{\AA}$   $\pm$  0.4k $\text{\AA}$

Type: Metal 2: AlCu(2%)  
Thickness: Metal 2: 16k $\text{\AA}$   $\pm$  0.8k $\text{\AA}$

#### GLASSIVATION:

Type: Nitride  
Thickness: 4k $\text{\AA}$   $\pm$  0.5k $\text{\AA}$

#### TRANSISTOR COUNT:

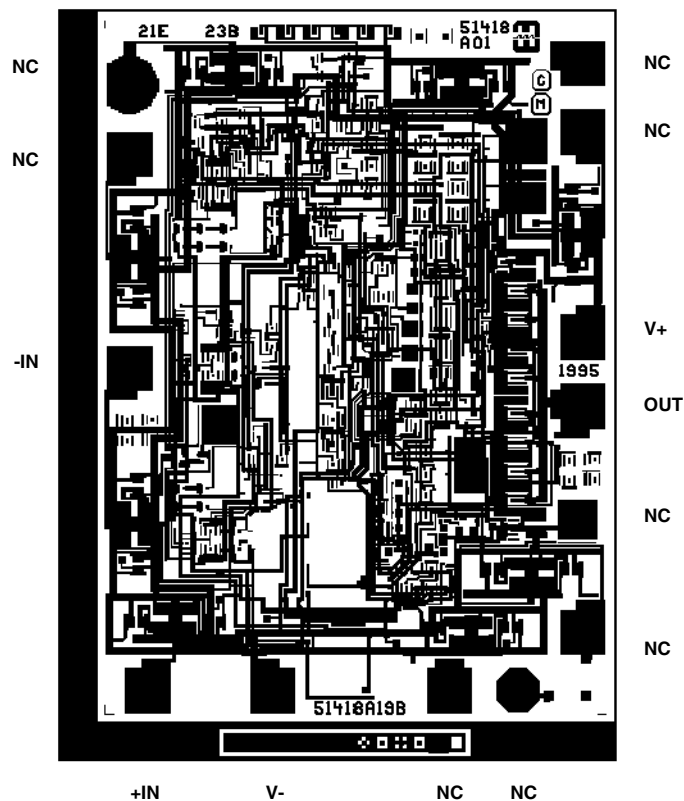
130

#### SUBSTRATE POTENTIAL (POWERED UP):

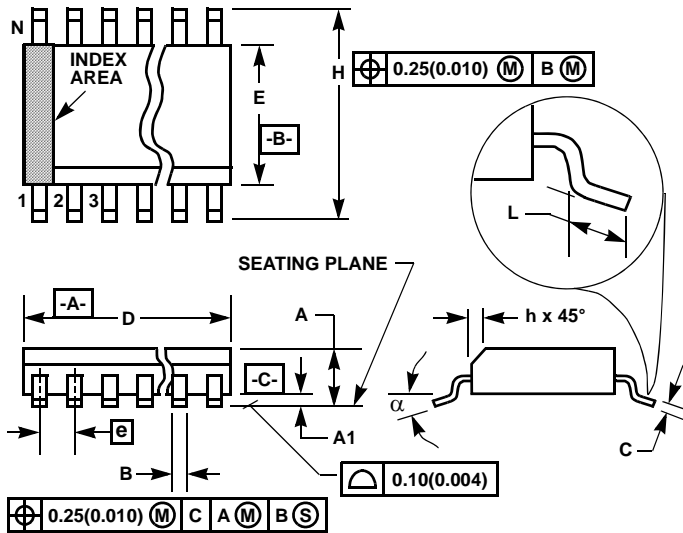
Floating (Recommend Connection to V-)

### Metallization Mask Layout

HFA1109



### Small Outline Plastic Packages (SOIC)



#### NOTES:

1. Symbols are defined in the "MO Series Symbol List" in Section 2.2 of Publication Number 95.
2. Dimensioning and tolerancing per ANSI Y14.5M-1982.
3. Dimension "D" does not include mold flash, protrusions or gate burrs. Mold flash, protrusion and gate burrs shall not exceed 0.15mm (0.006 inch) per side.
4. Dimension "E" does not include interlead flash or protrusions. Interlead flash and protrusions shall not exceed 0.25mm (0.010 inch) per side.
5. The chamfer on the body is optional. If it is not present, a visual index feature must be located within the crosshatched area.
6. "L" is the length of terminal for soldering to a substrate.
7. "N" is the number of terminal positions.
8. Terminal numbers are shown for reference only.
9. The lead width "B", as measured 0.36mm (0.014 inch) or greater above the seating plane, shall not exceed a maximum value of 0.61mm (0.024 inch).
10. Controlling dimension: MILLIMETER. Converted inch dimensions are not necessarily exact.

#### M8.15 (JEDEC MS-012-AA ISSUE C)

#### 8 LEAD NARROW BODY SMALL OUTLINE PLASTIC PACKAGE

SYMBOL	INCHES		MILLIMETERS		NOTES
	MIN	MAX	MIN	MAX	
A	0.0532	0.0688	1.35	1.75	-
A1	0.0040	0.0098	0.10	0.25	-
B	0.013	0.020	0.33	0.51	9
C	0.0075	0.0098	0.19	0.25	-
D	0.1890	0.1968	4.80	5.00	3
E	0.1497	0.1574	3.80	4.00	4
e	0.050 BSC		1.27 BSC		-
H	0.2284	0.2440	5.80	6.20	-
h	0.0099	0.0196	0.25	0.50	5
L	0.016	0.050	0.40	1.27	6
N	8		8		7
α	0°	8°	0°	8°	-

Rev. 1 6/05

All Intersil U.S. products are manufactured, assembled and tested utilizing ISO9000 quality systems.

Intersil Corporation's quality certifications can be viewed at [www.intersil.com/design/quality](http://www.intersil.com/design/quality)

*Intersil products are sold by description only. Intersil Corporation reserves the right to make changes in circuit design, software and/or specifications at any time without notice. Accordingly, the reader is cautioned to verify that data sheets are current before placing orders. Information furnished by Intersil is believed to be accurate and reliable. However, no responsibility is assumed by Intersil or its subsidiaries for its use; nor for any infringements of patents or other rights of third parties which may result from its use. No license is granted by implication or otherwise under any patent or patent rights of Intersil or its subsidiaries.*

For information regarding Intersil Corporation and its products, see [www.intersil.com](http://www.intersil.com)