

[查询FSLF-S090JG供应商](#)

[捷多邦, 专业PCB打样工厂, 24小时加急出货](#)

2012 Size

Chip Multilayer Diplexer  
for CELL / GPS

FSLF-S090JG

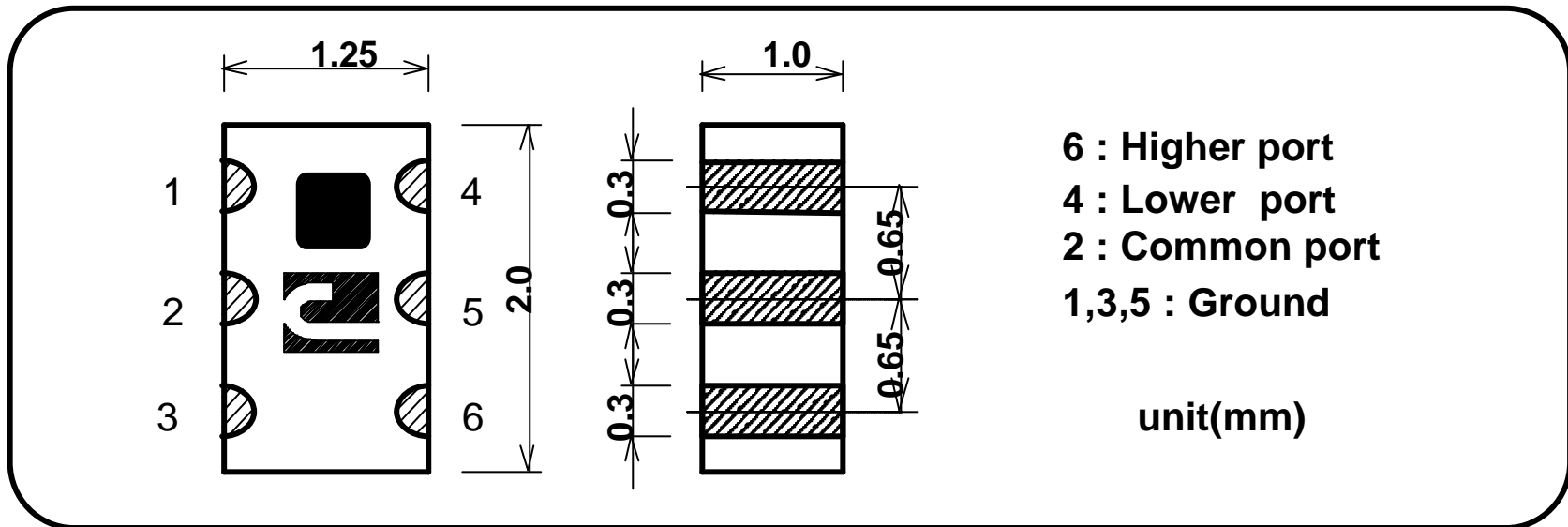


All the technical data and information contained herein are subject to change without notice.



LF-FSLF-S090JG-0406A

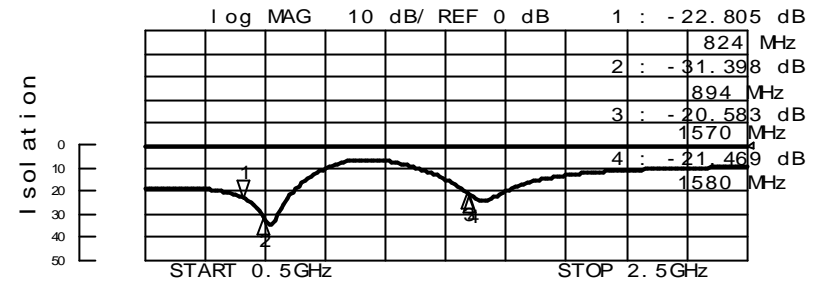
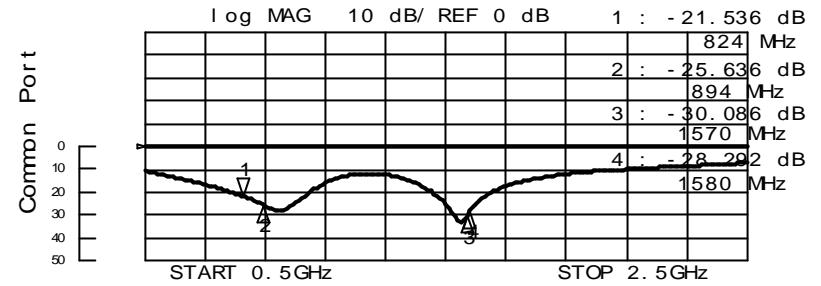
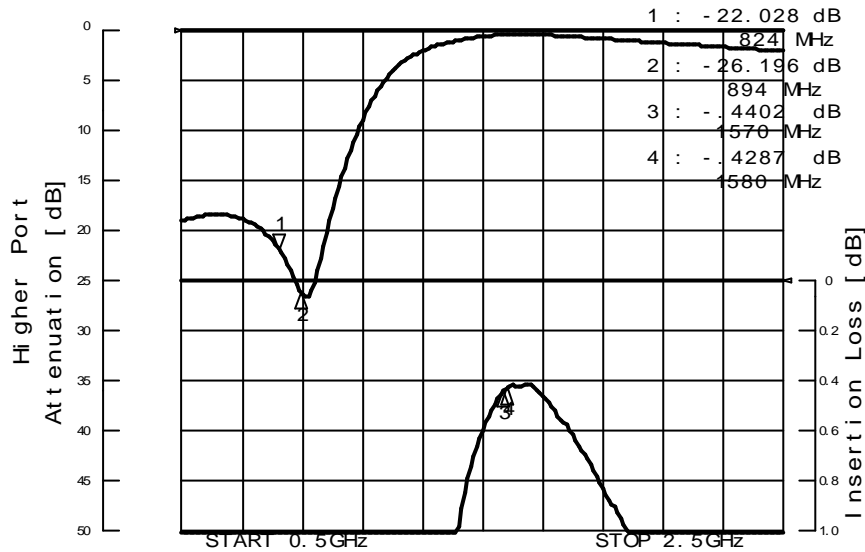
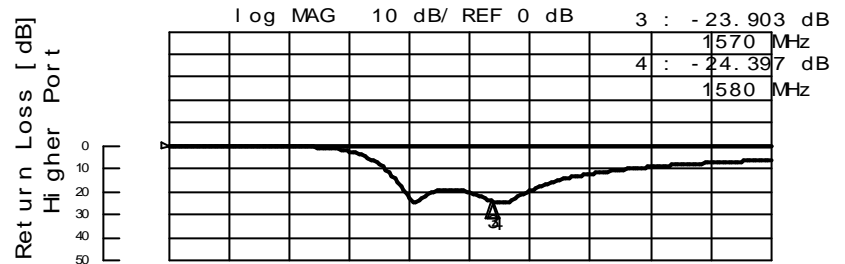
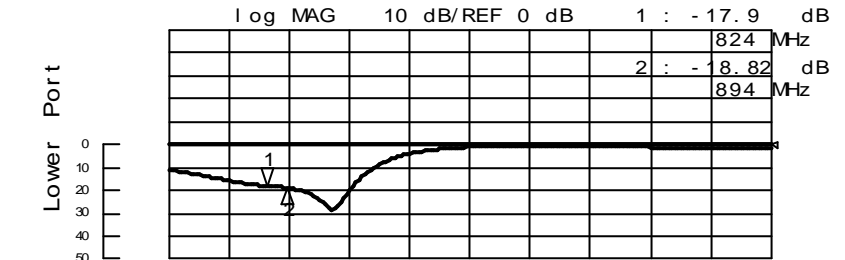
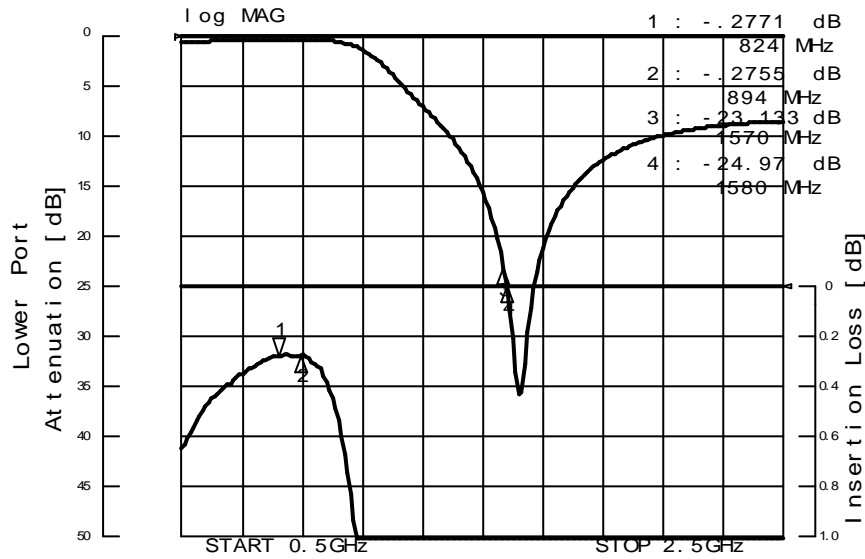
## Shape & Size



## Specifications

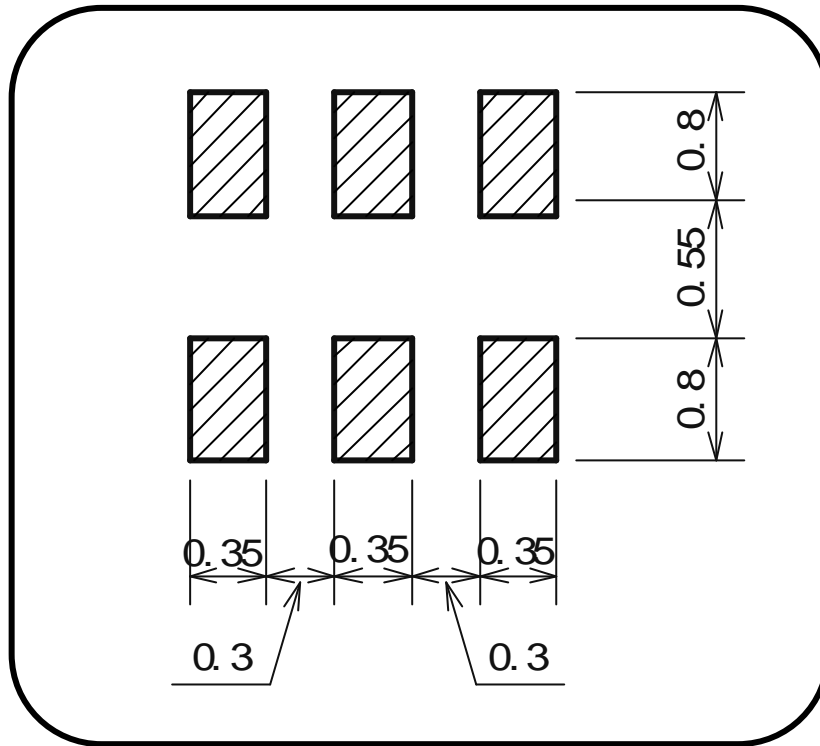
|   |                                |  |             |
|---|--------------------------------|--|-------------|
| Frequency Range   | f1:824-894MHz                  | Attenuation in f2<br>Lower $\Leftrightarrow$ Common  | 17dB Min.   |
|   | f2:1575.42MHz +/- 1MHz         |  |             |
| Insertion Loss in f1<br>Lower $\Leftrightarrow$ Common  | 0.5dB Max.(at 25deg.C)         | Attenuation in f1<br>Higher $\Leftrightarrow$ Common | 17dB Min.   |
|   | 0.55dB Max.(at -35 ~ +85deg.C) |  |             |
| Insertion Loss in f2<br>Higher $\Leftrightarrow$ Common | 0.6dB Max.(at 25deg.C)         | Power Capacity                                       | 1W Max.     |
|   | 0.65dB Max.(at -35 ~ +85deg.C) | Temperature Range                                    | -35to+85deg |
| Return Loss (all port)                                  | 10dB Min.                      |  |             |

# FSLF-S090JG SAMPLE DATA



All the technical data and information contained herein are subject to change without notice.

## Foot Pattern



## Foot Pattern Example

