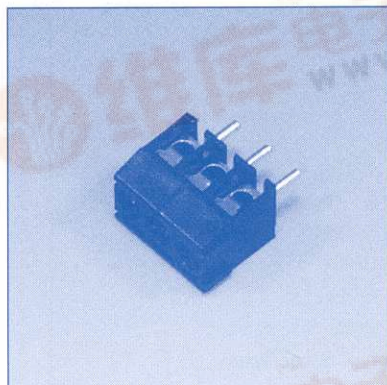


# Screw Type Series

## 302 Series



### Technical Data:

#### Material:

- HOUSING: NYLON (Without Glass). UL 94 V-0.
- Metal Housing: Brass, Tin plated.
- First 40u" (min) Cu plating over all.
- 40u" (min) Cu plating over all.
- Last 100u" (min) Cu plating over all.
- (P.C Pin):  $\varnothing 0.9\text{mm}/.035\text{in} \leq 0.65\text{mm}^2$
- Wire guard: Stainless spring steel.
- Screw: M2, Steel Zinc plated, yellow chromate treated.

#### Electrical:

- Current rating: 7 Amp.
- Contact resistance:  $15\text{m} \Omega$  (Max).
- Insulation resistance:  $5000\text{M} \Omega / 500\text{VAC}$ .
- Withstanding Voltage:  $1500\text{VAC}/\text{min}$ . test time= 60sec/1pc.
- Wire Range: 16-26 AWG.

#### Mechanical:

- Drawing force: 6.0 Kgs (min).
- Torque:  $3.5 \text{ Kg}/\text{cm}^2$  (Max).
- Operating temperature:  $-55^\circ\text{C}$  to  $+105^\circ\text{C}$
- Solderability: 95 % coverage (min). test temperature=  $230^\circ\text{C} \pm 10^\circ\text{C}$ . test time=  $3^\circ\text{C} \pm 0.5\text{sec}$ .

### Application and Features:

- Center-to-Center Spacing:

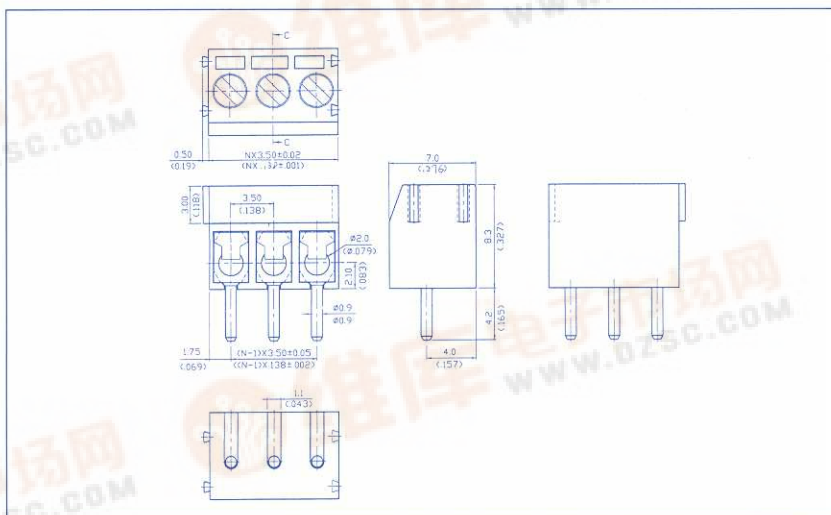
3.5mm/.138in.

- Recommended P.C.B Hole

$\varnothing 1.20\text{mm}/0.047\text{in}$ .

- Standard sizes are 2 and 3

way-block, but every number of contact can be combined, by simply plugging them together and can be ordered as required.



Notes: Please replace 'X' with appropriate coding listed in the tables below

3 0 2 - X X X - X X 0 2 - 0 0 X 0

#### Number of contact

02-24 po	02
	03
	etc.

#### Pitch

3.50mm/.138"	0
7.00mm/.276"	1
3.81mm/.150"	A
7.62mm/.300"	B

#### Wire Guard

With	1
------	---

#### Color

Black	0
Green	5
Blue	6

#### Screw Type

" - "	0
" + "	1

