



# SAW Components

Data Sheet B3563

Data Sheet

A large, stylized EPCOS logo is superimposed over a grayscale image of a globe. The logo is white and appears to be floating above the globe's surface. The globe shows continents and is surrounded by a network of lines, suggesting a global or technological theme.



## SAW Components

B3563

## Low-loss Filter

864,00 MHz

## Data Sheet

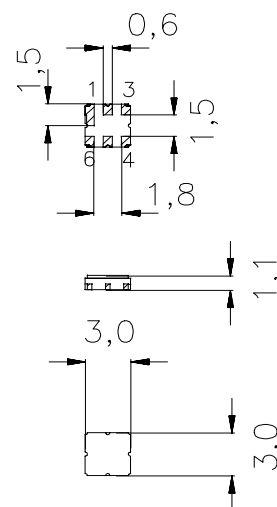
### Features

- Low loss RF filter for wireless audio application
- Low amplitude ripple
- High image frequency suppression
- No matching network required for operation at 50  $\Omega$
- Package for **Surface Mounted Technology (SMT)**

### Terminals

- Ni, gold-plated

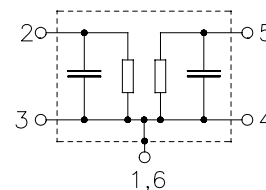
Ceramic package **DCC6C**



Dimensions in mm, approx. weight 0,037 g

### Pin configuration

2	Input
5	Output
1, 3, 4, 6	Ground



Type	Ordering code	Marking and Package according to	Packing according to
B3563	B39861-B3563-U410	C61157-A7-A67	F61074-V8088-Z000

Electrostatic Sensitive Device (ESD)

### Maximum ratings

Operable temperature range	$T$	0/+40	$^{\circ}\text{C}$	
Storage temperature range	$T_{\text{stg}}$	-40/+85	$^{\circ}\text{C}$	
DC voltage	$V_{\text{DC}}$	0	V	
Source power	$P_{\text{S}}$	0	dBm	source impedance 50 $\Omega$



# SAW Components

B3563

## Low-loss Filter

864,00 MHz

### Data Sheet

#### Characteristics

Operating temperature range:  $T = 0 \dots 40 \text{ }^{\circ}\text{C}$   
 Terminating source impedance:  $Z_S = 50 \text{ } \Omega$   
 Terminating load impedance:  $Z_L = 50 \text{ } \Omega$

		min.	typ.	max.	
<b>Center frequency</b>	$f_c$	—	864,00	—	MHz
<b>Maximum insertion attenuation</b>	$\alpha_{\max}$	—	4,0	6,0	dB
	862,50 ... 865,50 MHz				
<b>Amplitude ripple</b>	$\Delta\alpha$	—	1,5	2,5	dB
	862,50 ... 865,50 MHz				
<b>Relative attenuation (relative to <math>\alpha_{\max}</math>)</b>	$\alpha_{\text{rel}}$				
	841,60 ... 843,60 MHz	40,0	44,0	—	dB
	852,30 ... 853,30 MHz	30,0	38,0	—	dB
	879,00 ... 915,00 MHz	30,0	38,0	—	dB
<b>Temperature coefficient of frequency</b>	$TC_f$	—	−30	—	ppm/K



SAW Components

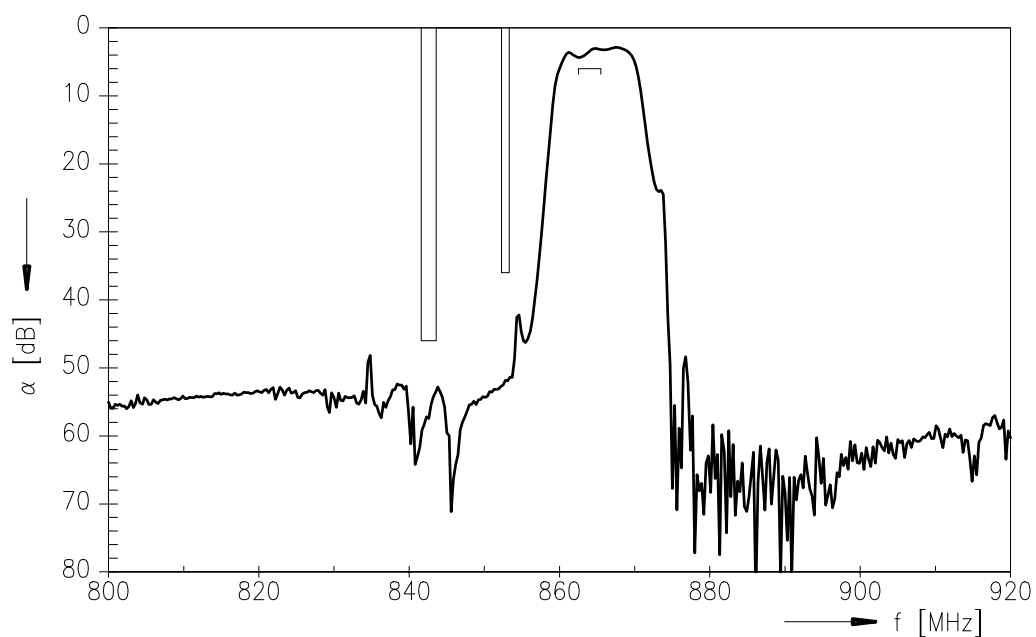
B3563

Low-loss Filter

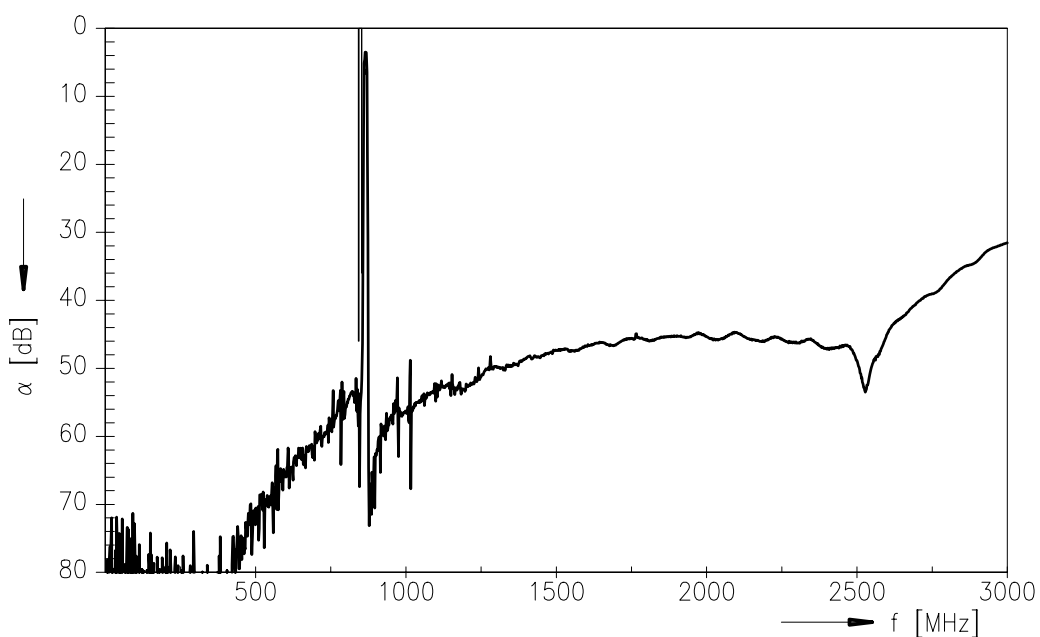
864,00 MHz

Data Sheet

### Transfer function



### Transfer function (wideband)





<b>SAW Components</b>	<b>B3563</b>
<b>Low-loss Filter</b>	<b>864,00 MHz</b>

Data Sheet

**Published by EPCOS AG**  
**Surface Acoustic Wave Components Division, SAW CE AE**  
**P.O. Box 80 17 09, 81617 Munich, GERMANY**

©.EPCOS AG 2002. Reproduction, publication and dissemination of this brochure and the information contained therein without EPCOS' prior express consent is prohibited.

Purchase orders are subject to the General Conditions for the Supply of Products and Services of the Electrical and Electronics Industry recommended by the ZVEI (German Electrical and Electronic Manufacturers' Association), unless otherwise agreed.

This brochure replaces the previous edition.

For questions on technology, prices and delivery please contact the Sales Offices of EPCOS AG or the international Representatives.

Due to technical requirements components may contain dangerous substances. For information on the type in question please also contact one of our Sales Offices.