

To all our customers

---

**Regarding the change of names mentioned in the document, such as Mitsubishi Electric and Mitsubishi XX, to Renesas Technology Corp.**

---

The semiconductor operations of Hitachi and Mitsubishi Electric were transferred to Renesas Technology Corporation on April 1st 2003. These operations include microcomputer, logic, analog and discrete devices, and memory chips other than DRAMs (flash memory, SRAMs etc.) Accordingly, although Mitsubishi Electric, Mitsubishi Electric Corporation, Mitsubishi Semiconductors, and other Mitsubishi brand names are mentioned in the document, these names have in fact all been changed to Renesas Technology Corp. Thank you for your understanding. Except for our corporate trademark, logo and corporate statement, no changes whatsoever have been made to the contents of the document, and these changes do not constitute any alteration to the contents of the document itself.

Note : Mitsubishi Electric will continue the business operations of high frequency & optical devices and power devices.

Renesas Technology Corp.  
Customer Support Dept.  
April 1, 2003

## **M16C/62**

### **Asynchronous Serial Programming of M16C/62 Flash Memory**

---

#### **1. Abstract**

The following article describes using an asynchronous serial port and the FlashStart application to program the user flash memory of the M16C/62 series of microcontrollers. This is referred to in the M16C/62 data sheets as the "Standard Serial I/O Mode 2" method of flash programming.

#### **2. Introduction**

The Mitsubishi M16C/62 series of microcontrollers is a 16-bit family of MCUs, based on Mitsubishi's popular M16C CPU core. These parts provide high memory efficiency, power-saving ability, low noise emission, and improved noise immunity. The flash versions of the device contain flash memory that can be rewritten with a single voltage.

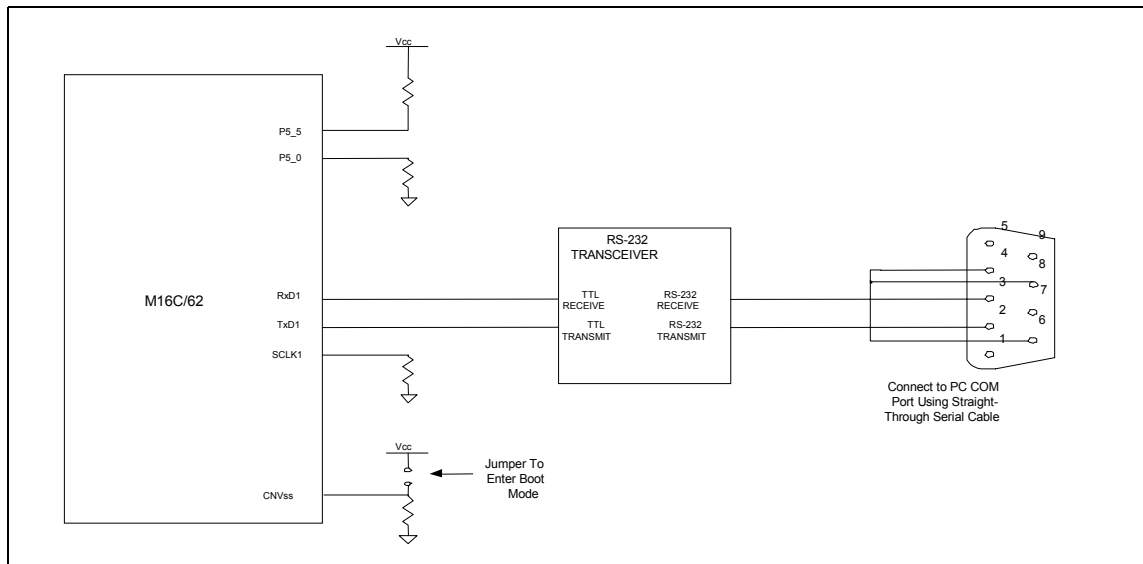
The M16C/62 flash can be programmed using one of three methods: Parallel I/O Mode, Standard Serial I/O Mode, and CPU Rewrite Mode. Standard Serial I/O Mode can be further divided into a synchronous mode (Standard Serial I/O Mode 1) and an asynchronous mode (Standard Serial I/O Mode 2). The flash memory is divided into two major blocks, a user program area and a boot ROM area. The user program area is for the normal application program and data. Any program in the boot ROM area is accessed only when a special hardware reset sequence is initiated. This boot ROM area has a control program stored in it when shipped from the factory. The program allows asynchronous or synchronous serial programming of the user area of the flash. Changes to the boot area of the flash can only be made using Parallel I/O Mode.

Mitsubishi provides a Windows® based program, FlashStart, to serially download code (in S-record format) to M16C/62 MCUs. The website for downloading the program is given in the Reference section.

#### **3. Hardware Requirements for Asynchronous Serial Programming**

The CNVSS pin on the microcontroller is the primary control line that determines whether the user area of the flash or the boot area is accessed after the release of a reset. If the CNVSS pin is low the device will always access the user flash area and will start in single chip mode. To execute the asynchronous serial rewrite program in the boot area of the flash, the pins listed below must be connected as shown when a reset is performed (either during power-up of the microcontroller or by forcing the Reset line low and then setting it high). Figure 1 shows a typical connection.

Pin	Required Connection
CNVSS	Vcc
CE (P5-0)	Vcc
EPM (P5-5)	Vss
SCLK1 (P6-5)	Vss

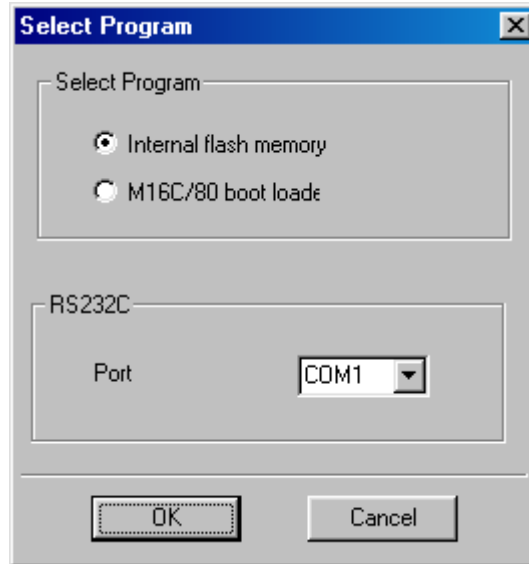


**Figure 1. Typical Connection for Asynchronous Serial Programming**

## 4. Using the FlashStart Program

### 4.1 Startup

Selecting 'flashstart.exe' will start the program. For the M16C/60 series MCUs select "internal flash memory" and the COM port that is connected to the hardware. Select "OK". See Figure 2.

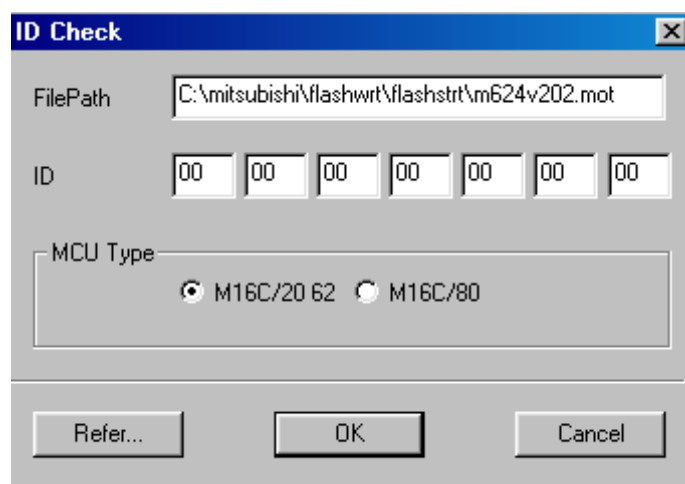


**Figure 2. Select Program Dialog Box**

Once communications are established, the ID Check dialog block opens. If a communication error occurs, follow the messages to properly set up communications

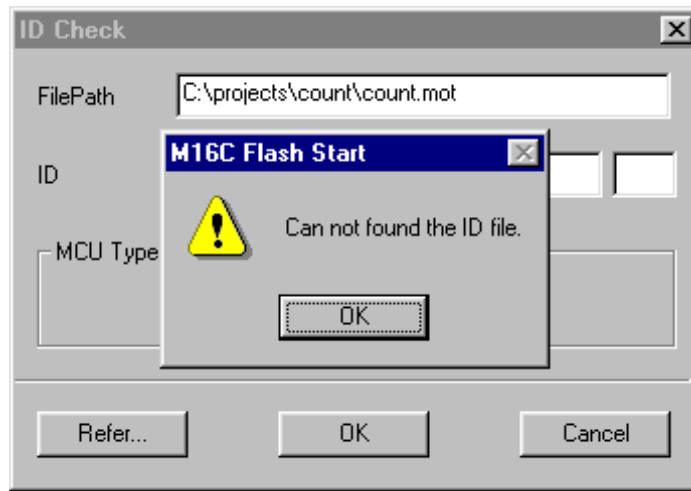
#### **4.2 Selecting a File and ID Check**

The ID Check dialog box is for inputting the name and ID of your work file. The program uses Motorola S2 format. If no ID was previously defined, the ID code would be all zeros or all ones ('00' hex or 'FF' hex).



**Figure 3. ID Check Dialog Box**

Input the path and file name in the FilePath field box and the ID code in the ID field box. Selecting the Refer button will open a browse window to locate the file on your PC. If the ID file is in the same folder (refer to the FlashStart manual), the ID code is loaded when the file is selected. If there is no ID file, a warning message will be shown that indicates the ID file cannot be found. Select "OK" in the warning box and enter the correct ID bytes in the ID boxes or "FF" or "00" in the boxes if there is no ID code being used.



**Figure 4. ID Check Dialog Box**

Once the ID code has been entered, selecting the OK button will start the ID check and opens the FlashStart Programmer window. This allows the device commands to be executed. If an ID matching error occurs, the FlashStart Programmer window will still open; however, the user will be unable to execute the commands. In this case, recheck the ID code.

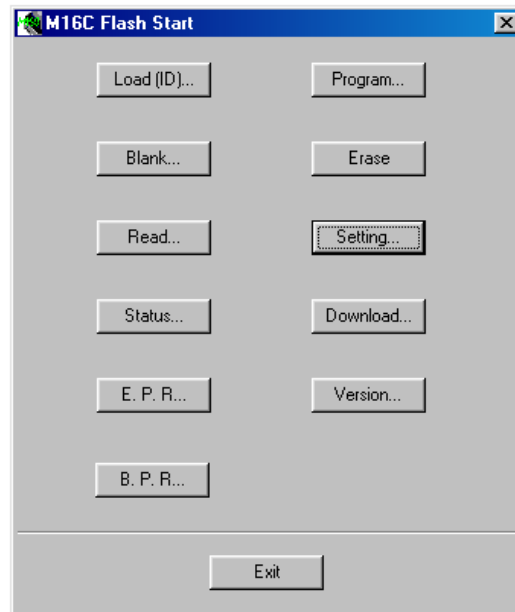
Selecting the Cancel button will open the FlashStart Programmer window without running an ID check. The FlashStart allows device commands to be used with cleared flash without performing an ID check.

### 4.3 FlashStart Programming Window

The FlashStart Programming window executes device commands. If the flash MCU is cleared, the device commands can be used without running an ID check. However, if the flash is written, only the Load (ID), Status, and Setting commands can be used until the ID check is run. Once the correct ID check is completed, all of the following commands are available:

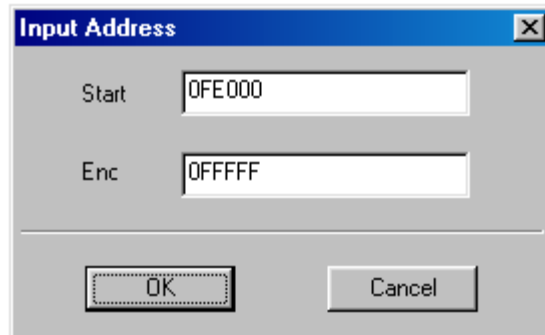
- Load (ID)                      Selects a file and checks the ID code.
- Blank                              Checks if a selected area of Flash ROM is blank.
- Read                                Compares the contents of the Flash ROM with the selected file.
- Status                              Displays the current status of the Flash ROM.
- E.P.R                                Erases the Flash, followed by a Program cycle, followed by a Read verify check.

- B.P.R. Runs a Blank check, followed by a Program cycle, followed by a Read verify check.
- Program Programs the device with the selected file (note that the program area must be blank).
- Erase Erases the entire user Flash ROM area.
- Setting Is used to change the Baud rate.
- Download Loads control program file selected into RAM and executes file.



**Figure 5. FlashStart Programming Window**

When Program and other commands are selected, the Input Address dialog box opens. The default addresses are the low and high addresses of the file that was selected in the ID Check dialog box. If a file is not selected, the start and end addresses of the M16C/62 are used.



**Figure 6. Input Address Dialog Box**

## **5. References**

- M16C/62 datasheets:62aeds.pdf
- FlashStart Programmer Manual

**Keep safety first in your circuit designs!**

- Mitsubishi Electric Corporation puts the maximum effort into making semiconductor products better and more reliable, but there is always a possibility of trouble occurring. Trouble with semiconductors may lead to personal injury, fire, or property damage. Remember to give due consideration to safety when making your circuit designs, with appropriate measures such as (i) placement of backup, auxiliary circuits, (ii) use of non-flammable material, or (iii) prevention against any malfunction or mishap.

**Notes regarding this information**

- This information is intended as a reference to assist our consumers in the selection of the Mitsubishi semiconductor product best suited to the customer's application; it does not convey any license under any intellectual property rights, or any other rights, belonging to Mitsubishi Electric Corporation or a third party.
- Mitsubishi Electric Corporation assumes no responsibility for any damage, or infringement of any third-party's rights, originating in the use of any product data, diagrams, charts, programs, algorithms, or circuit application examples contained in these materials.
- All information contained in these materials, including product data, diagrams, charts, programs and algorithms, represents information on products at the time of publication of these materials, and is subject to change by Mitsubishi Electric Corporation without notice due to product improvements or other reasons. It is therefore recommended that customers contact Mitsubishi Electric Corporation or an authorized Mitsubishi Semiconductor product distributor for the latest product information before purchasing a product listed herein.
- The information described herein may contain technical inaccuracies or typographical errors. Mitsubishi Electric Corporation assumes no responsibility for any damage, liability, or other loss arising from these inaccuracies or errors.
- Please also pay attention to information published by Mitsubishi Electric Corporation by various means, including the Mitsubishi Semiconductor home page (<http://www.mitsubishichips.com>).
- When using any or all of the information contained in these materials, including product, data, diagrams, charts, programs, and algorithms, please be sure to evaluate all information as a total system before making a final decision on the applicability of the information and products. Mitsubishi Electric Corporation assumes no responsibility for any damage, liability, or other loss resulting from the information contained herein.
- Mitsubishi Electric Corporation semiconductors are not designed or manufactured for use in a device or system that is used under circumstances in which human life is potentially at stake. Please contact Mitsubishi Electric Corporation or an authorized Mitsubishi Semiconductor product distributor when considering the use of a product contained herein for any specific purposes, such as apparatus or systems for transportation, vehicular, medical, aerospace, nuclear, or undersea repeater use.
- The prior written approval of Mitsubishi Electric Corporation is necessary to reprint or reproduce these materials in whole or in part.
- If these products or technologies are subject to Japanese export control restrictions, they must be exported under a license from the Japanese government and cannot be imported into a country other than the approved destination.
- Any diversion or reexport contrary to the export control laws and regulations of Japan and/or the country of destination is prohibited.
- Please contact Mitsubishi Electric Corporation or an authorized Mitsubishi Semiconductor product distributor for further details on these materials or the products contained therein.

## Mitsubishi Electric & Electronics USA, Inc. Electronic Device Group

### USA Headquarters

**Mitsubishi Electric & Electronics USA, Inc.  
Electronic Device Group**

1050 East Arques Avenue  
Sunnyvale, CA 94085-4601  
Phone: 408-730-5900  
FAX: 408-732-9382

### Direct Sales Offices – USA

#### Northwest

**Mitsubishi Electric & Electronics USA, Inc.  
Electronic Device Group**

1050 East Arques Avenue  
Sunnyvale, CA 94085-4601  
Phone: 408-730-5900  
FAX: 408-737-1129

#### Southwest

**Mitsubishi Electric & Electronics USA, Inc.  
Electronic Device Group**

20 Fairbanks, Suite 181  
Irvine, CA 92618  
Phone: 949-859-9453  
FAX: 949-859-9450

#### Rocky Mountain

**Mitsubishi Electric & Electronics USA, Inc.  
Electronic Device Group**

PO Box 273377  
Fort Collins, CO 80527  
Phone: 970-669-4068  
FAX: 970-669-4129

#### North Central

**Mitsubishi Electric & Electronics USA, Inc.  
Electronic Device Group**

3300 Edinborough Way, Suite 511  
Edina, MN 55435  
Phone: 952-837-9053  
FAX: 952-837-9059

**Mitsubishi Electric & Electronics USA, Inc.  
(Automotive Market Only)**

50 West Big Beaver Rd., Suite 136  
Troy, MI 48084  
Phone: 248-526-9580  
FAX: 248-526-9583

#### South Central

**Mitsubishi Electric & Electronics USA, Inc.  
Electronic Device Group**

8310 Capital of Texas Hwy. N.,  
Suite 260  
Austin, TX 78731  
Phone: 512-346-4200  
FAX: 512-346-4434

#### Northeast

**Mitsubishi Electric & Electronics USA, Inc.  
Electronic Device Group**

92 Montvale Avenue, Suite 2500  
Stoneham, MA 02180  
Phone: 781-245-6956  
FAX: 781-245-4233

#### Mid-Atlantic

**Mitsubishi Electric & Electronics USA, Inc.  
Electronic Device Group**

92 Montvale Avenue, Suite 2500  
Stoneham, MA 02180  
Phone: 781-245-6956  
FAX: 781-245-4233

#### South Atlantic

**Mitsubishi Electric & Electronics USA, Inc.  
Electronic Device Group**

2625 Meridian Parkway, Suite 100  
Durham, NC 27713  
Phone: 919-767-7900  
FAX: 919-767-7902

#### Southeast

**Mitsubishi Electric & Electronics USA, Inc.  
Electronic Device Group**

2810 Premiere Parkway, Suite 400  
Duluth, GA 30097  
Phone: 678-258-4518  
FAX: 678-258-4519

### Mexico Inquiries

#### Western Mexico

**Mitsubishi Electric & Electronics USA, Inc.  
Electronic Device Group**

20 Fairbanks, Suite 181  
Irvine, CA 92618  
Phone: 949-859-9453  
FAX: 949-859-9450

#### Eastern Mexico

**Mitsubishi Electric & Electronics USA, Inc.  
Electronic Device Group**

8310 Capital of Texas Hwy. N.,  
Suite 260  
Austin, TX 78731  
Phone: 512-346-4200  
FAX: 512-346-4434

### Puerto Rico Inquiries

#### Puerto Rico

**Mitsubishi Electric & Electronics USA, Inc.  
Electronic Device Group**

2810 Premiere Parkway, Suite 400  
Duluth, GA 30097  
Phone: 678-258-4518  
FAX: 678-258-4519

## Mitsubishi Electric Sales Canada, Inc.

### Direct Sales Offices – Canada

#### Central & Western Canada

**Mitsubishi Electric Sales  
Canada, Inc.**

4299 14th Avenue  
Markham, Ontario,  
Canada L3R 0J2  
Phone: 905-475-7728  
FAX: 905-475-1918

#### Eastern Canada

**Mitsubishi Electric Sales  
Canada, Inc.**

340 March Road, Suite 300  
Kanata, Ontario,  
Canada K2K 2E4  
Phone: 613-591-3348  
FAX: 613-591-3948



JQA-QS0161



Mitsubishi Electric MCU products sold into the  
Automotive marketplace are QS-9000 certified.

© 2002 Mitsubishi Electric & Electronics USA, Inc., Electronic Device Group.

Mitsubishi Electric & Electronics USA, Inc. is a wholly owned subsidiary of Mitsubishi Electric Corporation. All trademarks are the property of their respective owners. The information supplied by Mitsubishi Electric & Electronics USA, Inc. is believed to be accurate and reliable but in no event shall Mitsubishi Electric & Electronics USA, Inc. be liable for any damages whatsoever arising out of the use or inability to use the information or any errors that may appear in this publication.

THE INFORMATION IS PROVIDED AS IS WITHOUT ANY WARRANTIES OF ANY KIND, EITHER EXPRESS OR IMPLIED. MITSUBISHI ELECTRIC & ELECTRONICS USA, INC. RESERVES THE RIGHT, WITHOUT NOTICE, TO MAKE CHANGES TO THE INFORMATION OR TO THE DESIGN AND SPECIFICATIONS OF ITS HARDWARE AND/OR SOFTWARE PRODUCTS. PRODUCTS SUBJECT TO AVAILABILITY.

Printed in U.S.A.

[www.mitsubishichips.com](http://www.mitsubishichips.com)