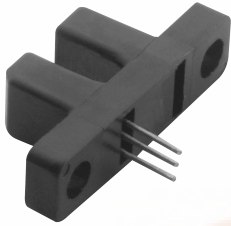


V N S E R I E S

VANE SWITCHES

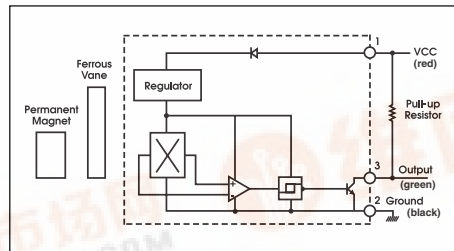
VN1015 Digital Vane Switch



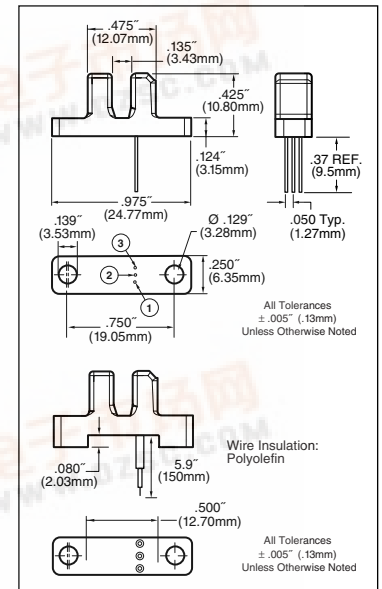
Magnetically-activated digital vane switch in a rugged, overmolded plastic housing with three pins or 3-wire harness.

- Available in Two Operating Temperature Ranges
- Immune From Moisture and Dust
- Reliable and Repeatable
- No Mechanical Contacts to Wear Out
- Operate From 5 to 24VDC
- Reverse Battery Protection to -24VDC
- Open Collector Output Compatible With All Logic Families
- Sensor Body Material: Glass-Filled Polyester
- Recommended Vane Parameters
 - Material: Low-carbon, Cold-rolled Steel
 - Minimum Dimensions: 0.40" Thick, 0.250" Wide
 - Vane should penetrate to a depth less than 0.120" from bottom of sensor slot.

Open Collector Sinking Block Diagram



Dimensions

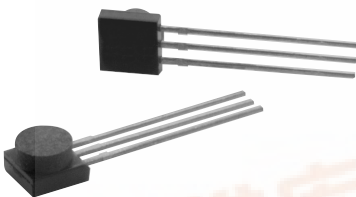


| Part # | Operating Voltage Range (VDC) | Supply Current, mA max | Output | Output Saturation Voltage, mV max | Output Current, mA max | Operate Temp. Range, °C | Storage Temp. Range, °C | Termination |
|-----------------|-------------------------------|------------------------|-------------|-----------------------------------|------------------------|-------------------------|-------------------------|----------------------|
| VN101501 | 4.5 to 24 | 6 | 3-pin sink | 400 | 25 | -40 to 85 | -40 to 85 | pins |
| VN101502 | 5 to 24 | 6 | 3-pin sink | 400 | 25 | -40 to 125 | -40 to 125 | pins |
| VN101503 | 4.5 to 24 | 6 | 3-wire sink | 400 | 25 | -40 to 85 | -40 to 85 | 24 AWG x 150mm leads |
| VN101504 | 5 to 24 | 6 | 3-wire sink | 400 | 25 | -40 to 125 | -40 to 125 | 24 AWG x 150mm leads |

H E 3 1 3 5

LATCH ASSEMBLY

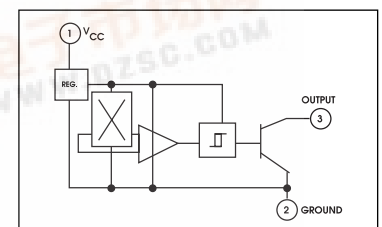
HE3135 Hall Effect Latch Assembly



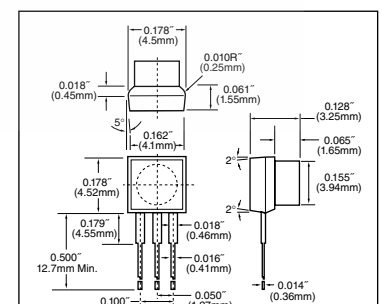
Magnetically-biased bipolar digital latch for use with multipole ring magnets.

- Offers Extreme Sensitivity
- Reliable — No Moving Parts to Wear Out
- Compact Size
- Output Compatible with All Digital Logic Families
- Symmetrical Output
- Latches in Presence of a South Pole and Unlatches in Presence of a North Pole

Sinking Block Diagram



Dimensions



| Part # | Operating Voltage Range (VDC) | Supply Current, mA max | Output | Output Saturation Voltage, mV max | Output Current, mA max | Operate Temp. Range, °C | Storage Temp. Range, °C | Termination |
|-----------------|-------------------------------|------------------------|--------|-----------------------------------|------------------------|-------------------------|-------------------------|-----------------------|
| HE313500 | 4.5 to 24 | 9 | sink | 400 | 25 | -20 to 85 | -40 to 105 | Straight Terminals |
| HE313501 | 4.5 to 24 | 9 | sink | 400 | 25 | -20 to 85 | -40 to 105 | Right-Angle Terminals |