



# ULBM15

## NPN SILICON RF POWER TRANSISTOR

### DESCRIPTION:

The **ASI ULBM15** is Designed for Class C, FM Land Mobile Applications up to 470 MHz.

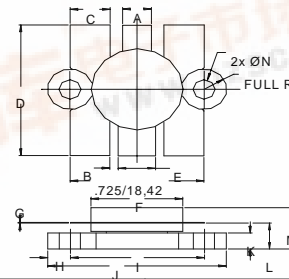
### FEATURES:

- Internal Input Matching Network
- $P_G = 7.5$  dB at 15 W/470 MHz
- **Omnigold™** Metalization System

### MAXIMUM RATINGS

$I_C$	3.0 A
$V_{CB0}$	36 V
$V_{CEO}$	16 V
$V_{EBO}$	4.0 V
$P_{DISS}$	43 W @ $T_C = 25^\circ C$
$T_J$	$-65^\circ C$ to $+200^\circ C$
$T_{STG}$	$-65^\circ C$ to $+150^\circ C$
$\theta_{JC}$	$5.0^\circ C/W$

### PACKAGE STYLE .500 6L FLG



DIM	MINIMUM Inches / mm	MAXIMUM Inches / mm
A	.150 / 3.43	.160 / 4.06
B		.045 / 1.14
C	.210 / 5.33	.220 / 5.59
D	.835 / 21.21	.865 / 21.97
E	.200 / 5.08	.210 / 5.33
F	.490 / 12.45	.510 / 12.95
G	.003 / 0.08	.007 / 0.18
H		.125 / 3.18
I		.725 / 18.42
J	.070 / 24.64	.080 / 24.89
K	.080 / 2.29	.105 / 2.67
L	.150 / 3.81	.170 / 4.32
M		.285 / 7.24
N	.120 / 3.05	.135 / 3.43

ORDER CODE: ASI10905

### CHARACTERISTICS $T_C = 25^\circ C$

SYMBOL	TEST CONDITIONS			MINIMUM	TYPICAL	MAXIMUM	UNITS
$BV_{CEO}$	$I_C = 20$ mA			16			V
$BV_{CES}$	$I_C = 20$ mA			36			V
$BV_{EBO}$	$I_E = 5.0$ mA			4.0			V
$I_{CES}$	$V_{CE} = 15$ V					5	mA
$h_{FE}$	$V_{CE} = 5.0$ V	$I_C = 1.0$ A		30		150	---
$C_{OB}$	$V_{CB} = 12.5$ V	$f = 1.0$ MHz				50	pF
$P_G$ $\eta_c$	$V_{CC} = 12.5$ V	$P_{OUT} = 15$ W	$f = 470$ MHz	7.5	60		dB %