

Full Performance Amplifiers

查询IME183供应商

博多斯专业PCB打样工厂, 24小时加急出货

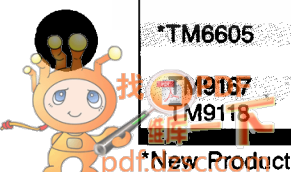
7-14-09-01

Available in 4 Pin TO-8 (TM), 4 Pin TO-8B (TR), Flatpacks, Surface Mount Packages and Connectorized Housings

(Listed by increasing Frequency, Noise Figure, and Power)

8-14-09-51

Model No.	Freq. Range (MHz)	Gain (dB)		Noise Figure (dB)		Power Output (dBm)		Third Order Intercept Point Typ (dBm)	VSWR MAX In/Out	Power Typ	
		Typ	Min	Typ	Max	Typ	Min			Vdc	mA
TR6476	10-450	29.0	28.0	2.7	3.5	+16.0	+11.0	+29	2.0:1	+ 8	65
TM6588	5-450	18.5	17.5	4.5	6.0	+21.0	+19.0	+35	2.0:1	+15	80
*TM6719	5-500	33.0	31.0	1.7	2.0	+ 9.5	+ 8.0	+19	2.0:1	+15	35
TM6143	5-500	15.8	15.0	1.6	2.5	+ 7.5	+ 5.0	+20	2.0:1	+15	14.5
TR7216	20-500	24.5	24.0	2.2	2.5	+19.5	+18.0	+33.5	2.0:1	+12	60
*TM6210	5-500	15.3	14.0	1.8	3.0	+ 7.5	+ 4.5	+18	2.0:1	+ 5	12
*TM5519	5-500	15.0	14.0	2.25	3.0	+14.5	+11.5	+29	2.0:1	+ 5	35
TM5119	5-500	15.5	14.0	2.3	3.0	+16.0	+14.0	+32	2.0:1	+15	30
TM6674	5-500	28.5	26.0	2.2	3.5	- 1.0	- 3.0	+ 9	2.0:1	+15	13.5
TM6573	5-500	32.0	29.0	2.5	3.5	+ 2.0	- 2.5	+14	2.0:1	+15	20
TM6501	5-500	16.5	15.5	2.5	3.5	+ 3.0	+ 1.0	+15	2.0:1	+15	10
TM6675	10-500	20.5	19.0	2.7	3.5	+ 4.5	+ 2.0	+15	2.0:1	+15	15
TM6512	5-500	21.0	19.0	2.5	3.5	+10.0	+ 8.0	+21	2.0:1	+15	23
TM6575	5-500	21.0	19.0	2.4	3.5	+ 9.5	+ 8.5	+21	2.0:1	+15	23
TM6517	5-500	22.7	21.0	2.4	3.5	+ 9.5	+ 8.5	+21	2.0:1	+15	22
*TM5544	10-500	12.5	11.0	2.5	3.5	+14.0	+12.0	+28	2.0:1	+ 5	35
TM6544	10-500	12.0	10.5	2.0	3.5	+15.0	+13.0	+32	2.0:1	+15	35
TM6583	10-500	30.0	28.0	2.3	4.0	0.0	- 4.0	+11	2.0:1	+ 5	13
*TM5101	5-500	13.0	12.0	2.75	4.0	+ 7.5	+ 6.0	+21	2.0:1	+15	20
TM6681	10-500	17.5	15.5	3.0	4.0	+ 9.5	+ 7.0	+23	2.0:1	+15	32
TM6524	5-500	30.5	28.5	3.0	4.0	+15.0	+14.0	+23	2.0:1	+15	65
TR6689	5-500	30.0	28.0	3.2	4.0	+21.5	+20.0	+34	2.0:1	+15	130
TR6676	10-500	40.5	37.5	3.0	4.3	+15.2	+13.1	+26	2.0:1	+15	77
TM6581	20-500	22.0	21.0	3.2	4.5	+16.0	+13.5	+28	2.0:1	+15	27
TM6674	5-500	28.5	26.0	2.2	3.5	- 1.0	- 3.0	+9	2.0:1	+15	13.5
*TM5133	10-500	10.0	9.0	3.3	4.5	+16.0	+14.5	+30	2.0:1	+15	57
*TM6582	30-500	23.0	21.0	3.5	4.5	+21.0	+17.0	+33	2.0:1	+15	47
TM6505	5-500	15.0	14.0	4.0	5.0	+10.0	+ 8.5	+23	2.0:1	+15	24
TM6533	5-500	16.5	15.0	3.5	5.0	+17.5	+16.5	+33	2.0:1	+15	50
TM6577	5-500	16.5	15.0	3.5	5.0	+17.5	+16.5	+33	2.0:1	+15	50
TR6589	5-500	26.5	25.0	3.8	5.0	+22.0	+20.0	+35	2.0:1	+15	130
TM6555	5-500	14.7	14.0	4.0	5.5	+11.5	+10.0	+25	2.0:1	+15	30
TM6572	5-500	14.7	13.5	4.0	5.5	+13.0	+11.0	+27	2.0:1	+ 5	30
TM6672	5-500	14.7	13.5	4.0	5.5	+13.0	+11.0	+27	2.0:1	+ 9	30
TM6147	5-500	17.0	16.0	3.5	5.5	+19.5	+17.5	+25	2.0:1	+15	50
TM6545	10-500	11.5	10.0	4.0	5.5	+19.0	+18.0	+36	2.0:1	+15	60
TM6574	5-500	30.0	27.0	4.8	6.0	+ 9.0	+ 7.0	+22	2.0:1	+15	37
TM6607	5-500	15.2	14.0	4.8	6.0	+15.0	+13.0	+27	2.0:1	+15	50
TR6776	1-520	30.0	26.0	4.1	6.0	+16.0	+13.5	+28	2.0:1	+15	65
TM6523	5-500	25.5	24.0	4.0	6.0	+16.0	+14.0	+30	2.0:1	+15	75
TM6576	5-500	28.0	26.0	5.0	6.0	+16.0	+14.0	+30	2.0:1	+15	64
*TM6509	5-500	14.5	13.0	4.6	6.0	+23.0	+20.0	+36	2.0:1	+15	88
TM6518	5-500	13.7	12.0	4.5	6.0	+25.0	+22.0	+35	2.0:1	+15	130
TM6557	10-500	15.0	13.5	4.5	6.5	+15.5	+14.0	+30	2.0:1	+15	44
TM6558	5-500	12.0	10.5	4.8	6.5	+19.0	+17.5	+36	2.0:1	+15	65
TM6131	5-500	10.3	9.0	4.5	6.5	+20.0	+18.0	+37	2.0:1	+15	62
TM6503	5-500	9.5	7.0	5.5	7.0	+15.0	+13.0	+33	2.0:1	+24	50
*TM6603	5-500	10.0	8.5	5.5	7.0	+15.5	+14.0	+30	2.0:1	+24	50
TM6559	5-500	11.5	10.0	5.5	7.0	+22.0	+20.0	+36	2.0:1	+15	88
TM6203	5-500	14.5	13.0	5.5	7.5	+25.0	+22.5	+36	2.0:1	+15	127
TM6507	10-500	15.5	14.0	6.0	8.0	+22.0	+20.0	+36	2.0:1	+15	110
*TM6605	10-600	15.7	13.5	3.0	4.5	+11.0	+ 7.0	+21	2.0:1	+15	24
TM9167	10-800	12.5	11.0	4.2	5.5	+15.5	+14.0	+29	2.0:1	+15	32
TM9118	10-800	14.7	13.5	4.4	5.5	+15.0	+14.5	+29	2.0:1	+15	45



Outline Drawings

All unmarked Pins are internally grounded.

T2 (TO-5 Package)

BASE IS GLASS.

PINS EQ SPACED ON 0.230 DIA BC LOCATED AS SHOWN

T-2									
Model No.	RF1	RF2	A	B	GM	+Y	-Y	CTL	
TWR2213	2	6	3	5	N/A	N/A	N/A	N/A	
TWR2204	2	6	3	5	8	N/A	N/A	N/A	
TWR2224	2	6	N/A	N/A	8	3	5	4	

T4 (TO-8 Package)

T5 (5 Pin TO-8 Package)

T7 (TO-12 Package)

T8 (TO8-B Package)

T10 (TO-39 Package)

SM1 (Surface Mount Package)

SM2 (Surface Mount Package)

SM-2									
Model No.	Gr	Out	DC	A	B	CTL			
All Amps	3	1	2	N/A	N/A	N/A			
TWR2278	3	1	N/A	4	2	N/A			
TWR002	1	3	2	N/A	N/A	4			

SM3 (Surface Mount Package)

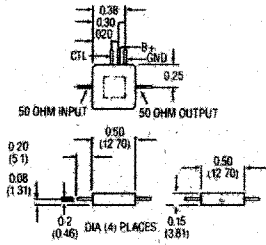
SM4 (Surface Mount Package)

SM3 (Surface Mount Package)

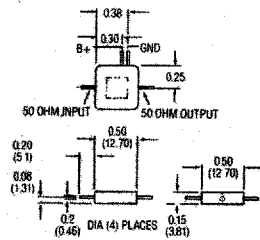
SM4 (Surface Mount Package)

Outline Drawings All unmarked Pins are internally grounded.

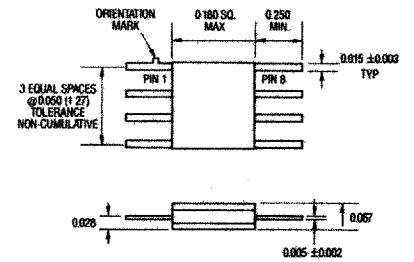
FP2 (Flatpack)



FP4 (Flatpack)



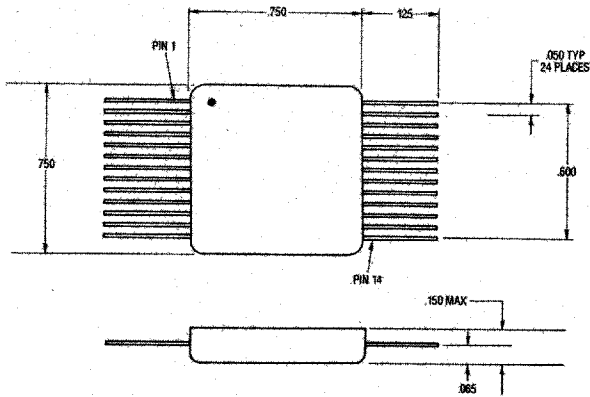
FP7 (Flatpack)



FP-7 PIN CONFIGURATION

Model No.	RF COM	RF1	RF2	A	B
SPST	N/A	8	5	2	3
SPDT	1	3	6	4	5

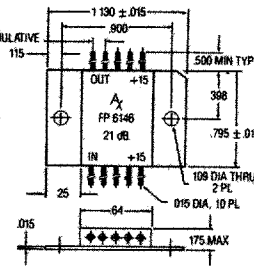
FP9 (Flatpack)



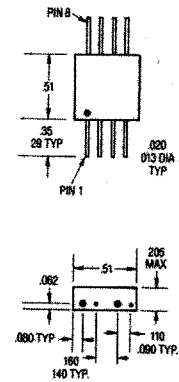
FP-9

Model No.	COM	RF1	RF2	RF3	RF4	RF5	RF7	-1	CTL	CTL	CTL	
TWP6004	7	14	16	18	20	22	24	26	13	3	4	5

FP10 (Flatpack)



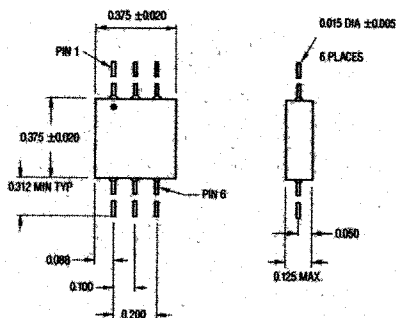
FP11 (Flatpack)



FP-11

Model No.	Out	V _{in}	V ₊
W00	7	3	1

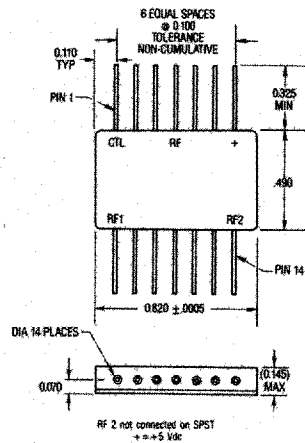
FP12 (Flatpack)



FP-12

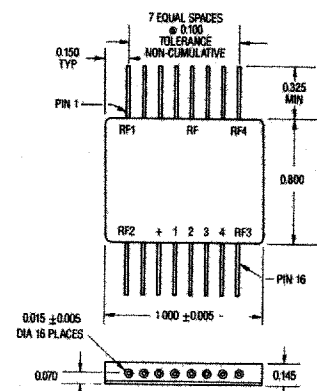
Model No.	RF1	RF2	COM	A	B	+5	-5	CTL
TWP2214	2	4	N/A	1	3	N/A	N/A	N/A
TWP2202	4	6	2	1	3	N/A	N/A	N/A
TWP2225	4	6	2	N/A	N/A	1	3	4

FP13 (Flatpack)



RF 2 not connected on SPST
+ = +5 Vdc

FP14 (Flatpack)



RF 4 not connected on SPST
+ = +5 Vdc