

SERIES TL SWITCHES

TACT SWITCHES



SPECIFICATIONS

Rating:	50mA@50 VDC
Electrical Life:	100,000 cycles
Contact Resistance:	100mΩ max., typical @ 2-4 VDC 100mA for both silver and gold plated contacts
Insulation Resistance:	1,000MΩ min.
Dielectric Strength:	>1,000 V rms at sea level
Operating Force:	160 ± 50 gf, 260 ± 50 gf

MATERIALS

Housing:	Polybutylene Terephthalate (PBT)
Actuator:	Polybutylene Terephthalate (PBT)
Cover:	Polyester
Contacts:	Silver plated phosphor bronze
Terminals:	Silver plated copper alloy

HOW TO ORDER

Series	Model No.	Actuator ("L" Dimension)	Operating Force	Contact Material	Cap (Where Avail.)	Cap Color
TL	1100	(None)=3.3mm □ A=3.8mm □ B=4.554mm C=6.45mm Rt. Angle D=4.3mm E=7.5mm F=12mm G=11.2mm Rt. Angle	F160 F260	Q=Silver R=Gold	/	See Cap Options

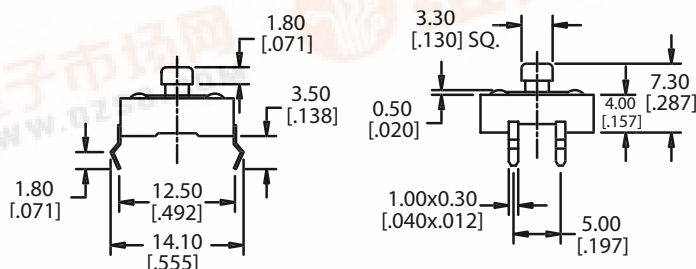
□ = Square Snap-on Actuator Head
"L" Dimension is 7.3mm

EXAMPLE

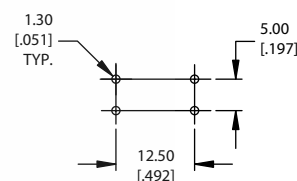
TL → 1100 → C → F260 → Q → TAK → GRY



TL 1100



P.C. MOUNTING



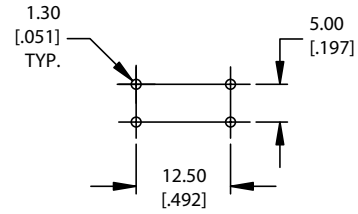
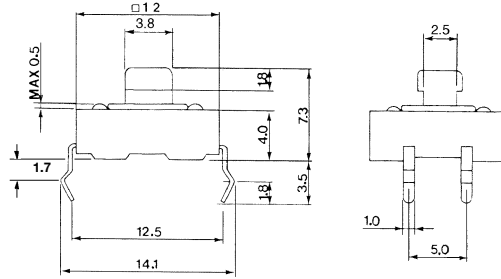
SERIES **TL** SWITCHES

TACT SWITCH

P.C. MOUNTING



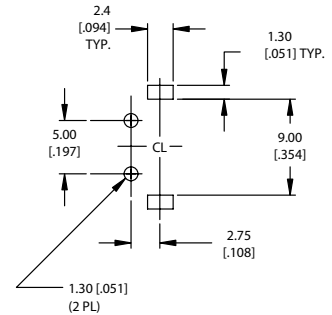
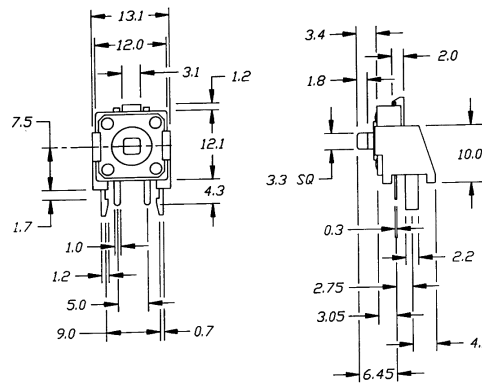
TL 1100 A



P.C. MOUNTING



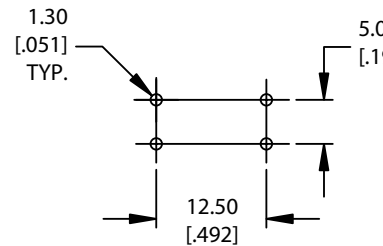
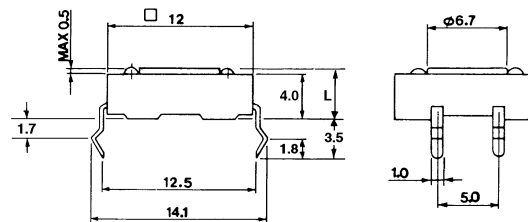
TL 1100 C



P.C. MOUNTING



TL 1100 B



Actuator Length (L) in mm

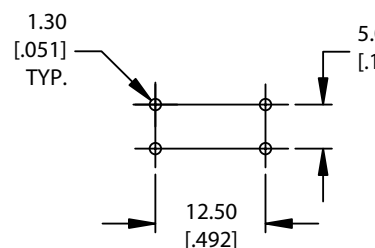
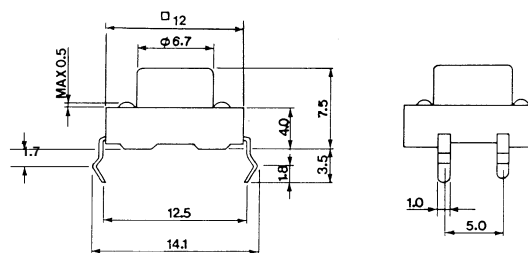
B = 4.55 mm

D = 4.3 mm

P.C. MOUNTING



TL 1100 E



SPECIFICATIONS SUBJECT TO CHANGE WITHOUT NOTICE.

SERIES **TL** SWITCHES

TACT SWITCHES

