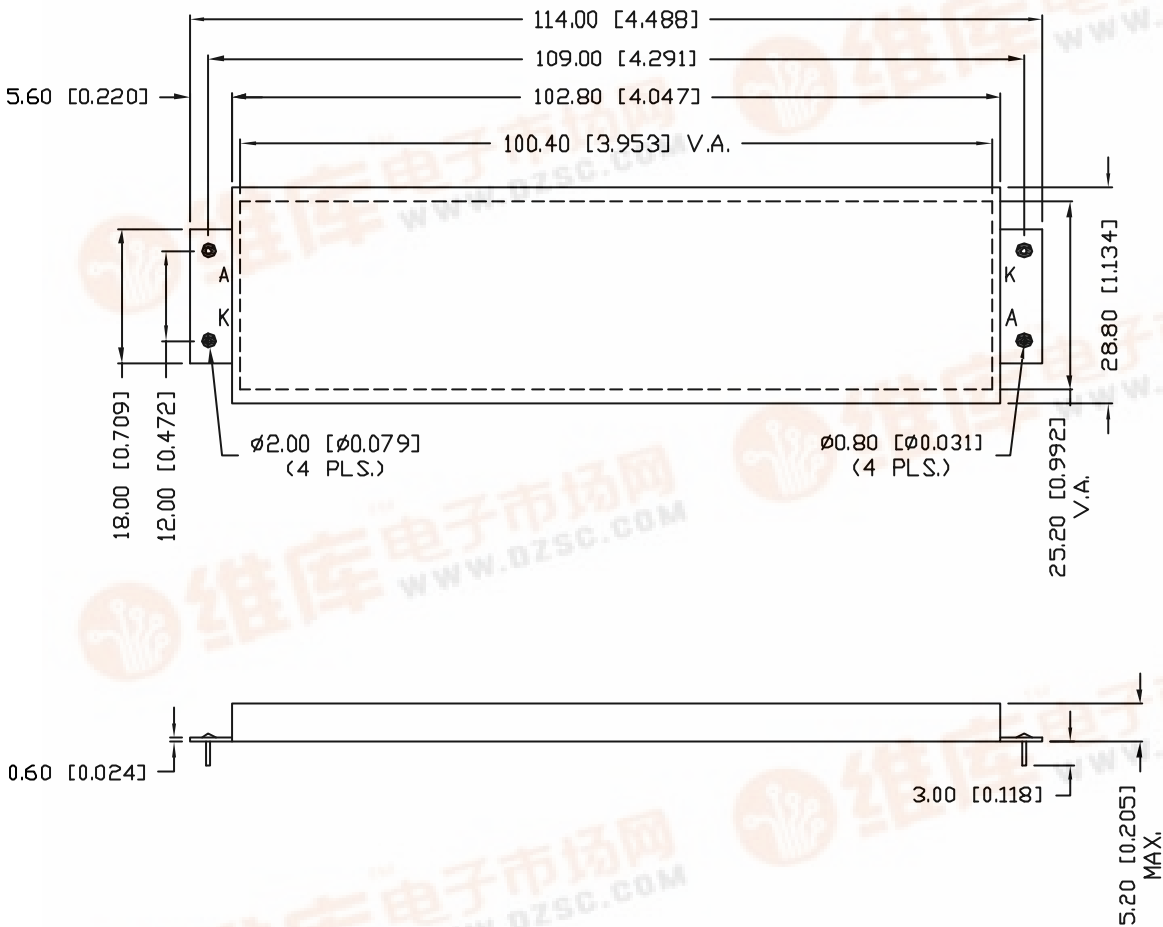




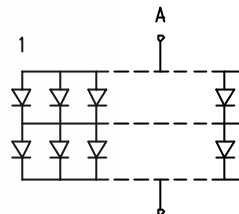
UNCONTROLLED DOCUMENT

PA  
SSB-C



ELECTRO-OPTICAL CHARACTERISTICS	
PARAMETER	MIN
PEAK WAVELENGTH	
FORWARD VOLTAGE	
REVERSE VOLTAGE	8
LUMINOUS INTENSITY	
EMITTED COLOR:	GREEN
REFLECTOR FINISH:	WHITE

LIMITS OF SAFE OPERATION AT 25°C	
PARAMETER	
STEADY CURRENT	
POWER DISSIPATION	
DERATE FROM 25°C PER DIE	
OPERATING, STORAGE TEMP.	
SOLDERING TEMP.	
	2.0mm FROM BODY



\*UNLESS OTHERWISE SPECIFIED TOLERANCES PER DECIMAL PRECISION ARE: X=±1 (±0.038), XX=±0.5 (±0.020), XXX=±0.25 (±0.010), XXXX=±0.127 (±0.005). LEAD SIZE=±0.05 (±0.002), LEAD LENGTH=±0.10 (±0.004)

PART NUMBER

SSB-COB10025GW

CONFIDENTIAL INFORMATION  
THE INFORMATION CONTAINED IN THIS DOCUMENT IS THE PROPERTY OF LUMEX INC. EXCEPT AS SPECIFICALLY AUTHORIZED IN WRITING BY LUMEX INC. THE HOLDER OF THIS DOCUMENT SHALL KEEP ALL INFORMATION CONTAINED HEREIN CONFIDENTIAL AND SHALL PROTECT SAME IN WHOLE OR IN PART FROM DISCLOSURE AND DISSEMINATION TO ALL THIRD PARTIES.

RELIABILITY NOTE  
OUR MANY YEARS OF EXPERIENCE DATA ACCUMULATION INDICATE THAT



DRAWN BY:

CHECKED:

