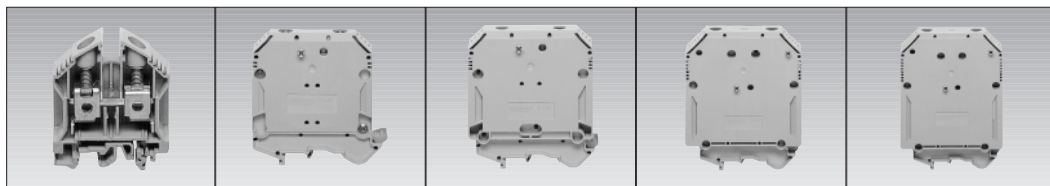


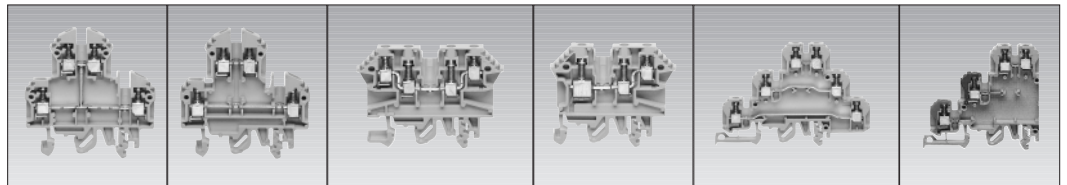
		SR2.5	SRU2.5	SR4	SRU4	SR6-10	SR16
Cat. No.	Beige	50.41296.2	50.41030.2	50.41001.2	50.41015.2	50.41005.2	50.41050.2
	Blue	-	-	50.41001.5	-	-	-
Earth terminal	Green/yel	SRSL2.5-T35		SRSL4-T35		SRSL10-T35	SRSL16-T35
Cat. No.		50.41056.2		50.41212.2		50.41213.2	50.41197.2
Max. wire size		2.5mm ²	2.5mm ²	4mm ²	4mm ²	10mm ²	16mm ²
Terminal width		5mm	5mm	6mm	6mm	8mm	12mm
Electrical ratings							
IEC		800V 24A	500V 24A	800V 32A	500V 32A	800V 57A	800V 76A
VDE		750V 26A	500V 26A	750V 34A	500V 34A	750V 61A	750V 82A
UL		600V 26A	300V 20A	600V 40A	300V 30A	600V 65A	600V 70A
CSA		600V 26A	300V 20A	600V 40A	300V 34A	600V 55A	600V 70A
Accessories							
End plate		AP2.5-10	APSR	AP2.5-10	AP1.5-4	AP2.5-10	AP16
Cat. No.	Beige	50.2001.2	50.2070.2	50.2001.2	50.2738.2	50.2001.2	50.2104.2
Isolation partition		TW2.5-10	TW2.5	TW2.5-10	TW1.5-4	TW2.5-10	TW16
Cat. No.	Beige	50.2002.2	50.2426.2	50.2002.2	50.2071.2	50.2002.2	50.2105.2
Separator		TRS3	-	TRS1	TRS3	TRS1	TRS1
Cat. No.	Beige	50.2566.2	-	50.2003.2	50.2566.2	50.2003.2	50.2003.2
End bracket		ES35/2/K	ES35	ES35/2/K	ES35	ES35/2/K	ES35/2/K
Cat. No.	Beige	50.2826.2	50.2005.2	50.2826.2	50.2005.2	50.2826.2	50.2826.2
Test socket		STB8.5/2.3	STB8.5/2.3	STB14/2.3	STB8.5/2.3	STB14/4	STB14/4
Cat. No.		50.2075.0	50.2075.0	50.2006.0	50.2075.0	50.2050.0	50.2050.0
Test plug		PS2.3	PS2.3	PS2.3	PS2.3	PS4	PS4
Cat. No.		50.2007.0	50.2007.0	50.2007.0	50.2007.0	50.2051.0	50.2051.0
Jumper bar assem.							
2 way		Q2	Q2	Q2/QI2	Q2	Q2/QI2	Q2
Cat. No.		50.2567.0	50.2422.0	50.2019.0/50.2740.2	50.2087.0	50.2060.0/50.2750.2	50.2112.0
3 way		Q3	Q3	Q3/QI3	Q3	Q3/QI3	Q3
Cat. No.		50.2568.0	50.2423.0	50.2020.0/50.2741.2	50.2088.0	50.2061.0/50.2751.2	50.2113.0
4 way		Q4	Q4	Q4/QI4	Q4	Q4/QI4	Q4
Cat. No.		50.2569.0	50.2424.0	50.2021.0/50.2742.2	50.2089.0	50.2062.0/50.2752.2	50.2114.0
10 way		Q10	Q10	Q10/QI10	Q10	Q10/QI10	Q10
Cat. No.		50.2570.0	50.2425.0	50.2022.0/50.2743.2	50.2090.0	50.2063.0/50.2753.2	50.2115.0



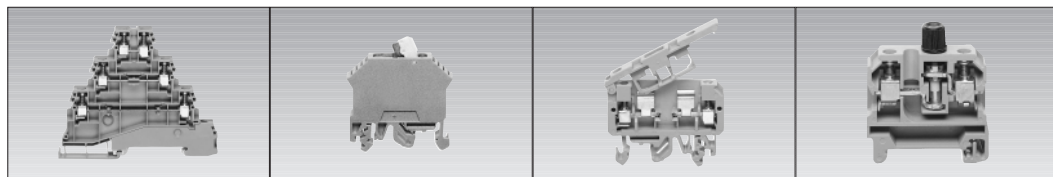
		SR35	SR50	SR95	SR150	SR240
Cat. No.	Beige	50.41052.2	50.41120.2	50.41122.2	50.41124.2	50.41126.2
Earth terminal	Green/yel	SRSL35-T35	-	-	-	-
Cat. No.		50.41199.2	-	-	-	-
Max. wire size		35mm ²	50mm ²	95mm ²	150mm ²	240mm ²
Terminal width		16mm	20mm	25mm	31mm	36mm
Electrical ratings						
IEC		800V 125A	1000V 150A	1000V 232A	1000V 309A	1000V 415A
VDE		750V 135A	1000V 168A	1000V 250A	1000V 335A	1000V 453A
UL		600V 115A	600V 150A	600V 230A	600V 275A	600V 370A
CSA		600V 100A	600V 150A	600V 230A	600V 275A	600V 370A
Accessories						
End plate		AP35	-	-	-	-
Cat. No.	Beige	50.2116.2	-	-	-	-
Isolation partition		TW35	-	-	-	-
Cat. No.	Beige	50.2117.2	-	-	-	-
End bracket		ES35/K/ST	HES35ST	HES35ST	HES35ST	HES35ST
Cat. No.	Beige	50.2828.0	50.2761.0	50.2761.0	50.2761.0	50.2761.0

Accessories

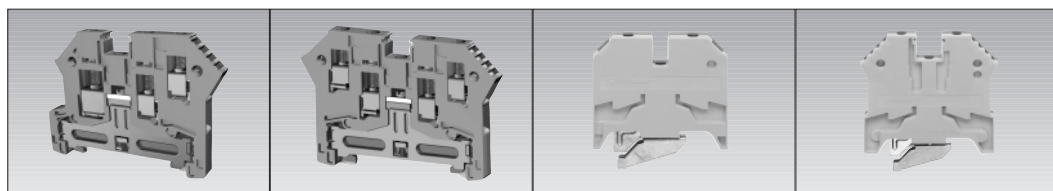
	Q	Cross Connection 2, 3, 4 and 10 poles
	QI	Insulated Cross Connection 2, 3, 4 and 10 poles
	AQ	External Jumper Bar 58 or 75 poles (27 amp rating)
	AQ	Insulated external Jumper Bar 2, 3 or 4 poles (10 amp rating)
	AD4E	Mains cover plate
	AD1	Mains cover plate
	ADQ	Cross connection cover
	SB	Marking system 5/6mm white or coloured
BSTR	Marking system 10/12mm white or coloured	



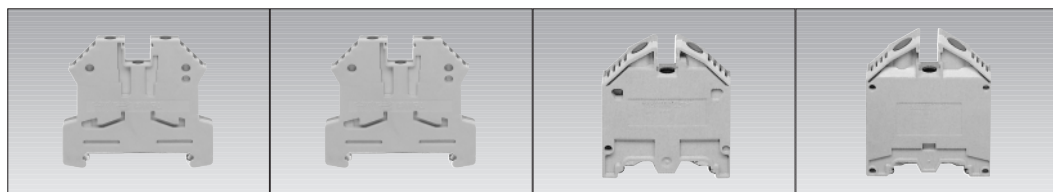
		Double deck	Double deck	Double deck	Single/double	Triple deck	Sensor
		SRD2.5	SRD4	SR4DLR	SR4DR	SRID2.5	SRI2.5
Cat. No.	Beige	50.41206.2	50.41020.2	50.41211.2	50.41210.2	50.41261.2	50.41260.2
Earth terminal	Green/yel	SRSL2.5-T35DRL	-	-	SRSL2.5-T35DR	-	-
Max. wire size		2.5mm ²	4mm ²	4mm ²	4mm ²	2.5mm ²	2.5mm ²
Terminal width		5mm	6mm	6mm	6mm	5mm	5mm
Electrical ratings							
IEC		500V 24A	500V 32A	500V 24A	500V 24A	-	-
VDE		500V 26A	500V 34A	500V 26A	500V 26A	250V 26A	250V 20A
UL		300V 20A	300V 30A	600V 20A	600V 20A	300V 20A	300V 20A
CSA		300V 20A	300V 27A	600V 26A	600V 26A	300V 20A	300V 20A
Accessories							
End plate		AP4	AP4	AP2.5RL	AP2.5R	AP2.5ID	AP2.5I
Cat. No.		50.2101.2	50.2101.2	50.2575.2	50.2574.2	50.2699.2	50.2698.2
Separator		TRS3	TRS3	TRS1	TRS1	-	-
Cat. No.		50.2566.2	50.2566.2	50.2003.2	50.2003.2	-	-
End bracket		ES35/2/K	ES35/2/K	ES35/2/K	ES35/2/K	ES35/2/K	ES35/2/K
Cat. No.		50.2826.2	50.2826.2	50.2826.2	50.2826.2	50.2826.2	50.2826.2
Test socket		STB8.5/2.3	STB8.5/2.3	STB14/2.3	STB14/2.3	STB8.5/2.3	STB8.5/2.3
Cat. No.		50.2075.0	50.2075.0	50.2006.0	50.2006.0	50.2075.0	50.2075.0
Test plug		PS2.3	PS2.3	PS2.3	PS2.3	PS2.3	PS2.3
Cat. No.		50.2007.0	50.2007.0	50.2007.0	50.2007.0	50.2007.0	50.2007.0
Jumper bar assem.							
2 way		Q2	Q2	Q2/QI2	Q2/QI2	Q2	Q2
Cat. No.		50.2567.0	50.2087.0	50.2019.0/50.2740.2	50.2019.0/50.2740.2	50.2422.0	50.2422.0
3 way		Q3	Q3	Q3/QI3	Q3/QI3	Q3	Q3
Cat. No.		50.2568.0	50.2088.0	50.2020.0/50.2741.2	50.2020.0/50.2741.2	50.2423.0	50.2423.0
4 way		Q4	Q4	Q4/QI4	Q4/QI4	Q4	Q4
Cat. No.		50.2569.0	50.2089.0	50.2021.0/50.2742.2	50.2021.0/50.2742.2	50.2424.0	50.2424.0
10 way		Q10	Q10	Q10/QI10	Q10/QI10	Q10	Q10
Cat. No.		50.2570.0	50.2090.0	50.2022.0/50.2743.2	50.2022.0/50.2743.2	50.2425.0	50.2425.0



		Sensor/earth SRMA2.5-T35	Disconnect SRT4-M	Lever fuse SRSI4-H	Screw fuse SRSI10-T35-K
Cat. No.	Beige	50.41425.2	50.41390.2	50.42190.2	50.41092.6
Fuse size		-	-	5 x 20mm / 5 x 25mm	5 x 20mm / 5 x 25mm
Max. wire size		2.5mm ²	4mm ²	4mm ²	10mm ²
Terminal width		6mm	6mm	8mm	12mm
Electrical ratings					
IEC		-	400V 10A	400V 6.3A	400V 10A
VDE		400V 24A	380V 10A	380V 6.3A	380V 10A
UL		-	600V 15A	600V 16A	300V 10A
CSA		-	300V 10A	300V 6.3A	300V 10A
Accessories					
End plate		AP VMAK	-	AP3250	AP1850
Cat. No.		50.2826.0	-	50.2046.2	50.2047.6
End bracket		-	ES35/2/K	ES35/2/K	ES35/2/K
Cat. No.		-	50.2826.2	50.2826.2	50.2826.2



		SRSL2.5DR	SRSL2.5DRL	SRSLN2.5	SRSL2.5
Cat. No.	TS35-rail	50.41060.2	50.41062.2	50.41058.2	50.41056.2
	TS32-rail	-	-	50.41057.2	50.41055.2
Earth terminal		Green/yellow	Green/yellow	Green/yellow	Green/yellow
Max. wire size		2.5mm ²	2.5mm ²	2.5mm ²	2.5mm ²
Terminal width		6mm	6mm	6mm	6mm



		SRSL4	SRSL10	SRSL16	SRSL35
Cat. No.	TS35-rail	50.41212.2	50.41213.2	50.41197.2	50.41199.2
	TS32-rail	50.41065.2	50.41066.2	50.41196.2	50.41198.2
Earth terminal		Green/yellow	Green/yellow	Green/yellow	Green/yellow
Max. wire size		4mm ²	10mm ²	16mm ²	35mm ²
Terminal width		8mm	12mm	12mm	16mm