

## Industrial Relay Sockets

A range of Sockets for octal and 11 PIN base, miniature and sub-miniature plug-in Power Relays


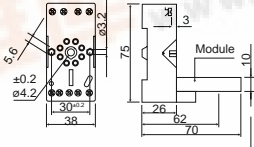

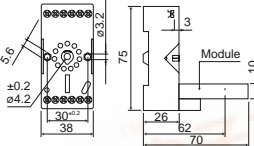
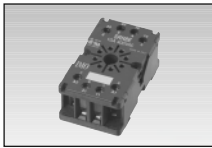
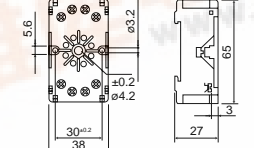

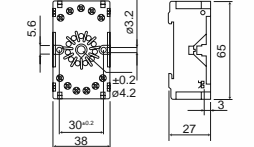
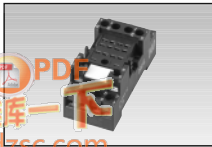
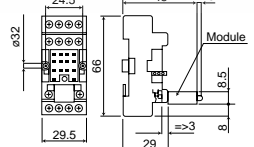
- Current ratings up to 12A
- Finger proof terminals
- Clamp plate or Box style terminals
- Plug-in modules available, Diode/LED/Varistor
- UL/CSA approvals



### Options and ordering codes

Part Number	SRN8	SRN11	SRN8E	SRN11E	SRN144	SRN144N	SRN3	SRN5
Number of terminals	9	12	8	11	14	14	5	8
Terminal type	Box				Clamp	Box		
Rating	10A/400V				10A/400V	12A/300V	12A/300V	
Dielectric strength	>3Kv							
Temperature range	-40 to +85°C						-25 to +85°C	
Screw tightening torque	0.8Nm							
Cable size rigid	2 x 2.5mm							
flexible	2 x 2.5mm							
Protection	IP20							
Module facility	Yes	Yes	No	No	Yes	Yes	Yes	Yes
Label facility	Yes	Yes	Yes	Yes	Yes	Option	Option	Option

### Dimensions and termination

	SRN8	
	SRN11	
	SRN8E	
	SRN11E	
	SRN144	

### Dimensions and terminations

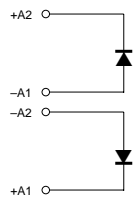
	<b>SRN144E</b>	
	<b>SRN3</b>	
	<b>SRN5</b>	

### Diode and LED modules

#### Plug-in Modules for use with:

##### Diode Module

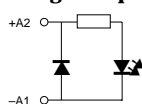
6 - 230VDC



6 - 230VDC

##### Diode and LED module protected against polarity inversion

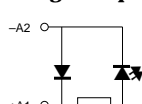
6/24VDC



110/240VDC

##### Diode and LED module protected against polarity inversion

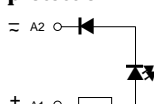
6/24VDC



110/240VDC

##### LED module without polarity protection

6/24V AC/DC



110/230V AC/DC

SRN8/11	SRN144N/SRN3/5		SRN144
RM11	RM12		RM1
RM21	RM22		RM2
RM31	RM32		RM3
RM31C	RM32C		RM3C
RM41	RM42		RM4
RM41C	RM42C		RM4C
RM61	RM62		RM6
RM91	RM92		RM9

#### Accessories

Label for use with SRN3/SRN5

TR

Relay ejector clip for SRN3/SRN5 and relays 15-16.5mm high

MS16