



DC Brushless Motor Driver IC

PT-3085-C Rotate Detection Output

Applications

- Double coils DC brushless motor.
- DC 3V ~ 18V.

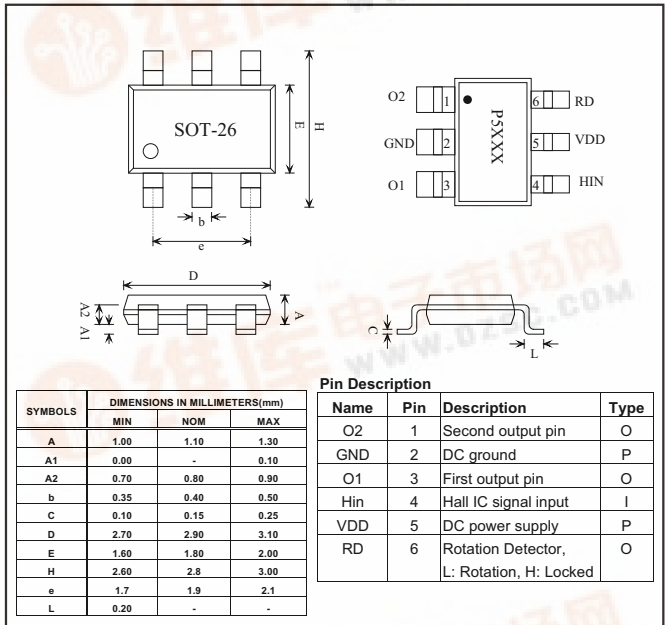
Features

- Motor lock protection and automatic restart
- Rotate Detection output(Alarm)
- Low power consumption and high driving efficiency

Input Devices

- Hall IC

Package: SOT-26



O: Output, I: Input, P: Power

Specifications

Absolute Maximum Ratings (Ta = 25°C)

Parameter	Symbol	Conditions	Ratings	Units
Maximum supply voltage	V _{DD} ^{max}		18	V
Allowable power dissipation	P _d		350 [*]	mW
Operating temperature	T _a		-30 ~ +125	°C
Storage temperature	T _s		-55 ~ +150	°C
Output current	I _{out}	Continoue	400	mA
		Peak	650	mA

* On 50mm x 50mm x 1.6mm glass epoxy board

- ◆ Any and all PROLIFIC products described or contained herein do not have specifications that can handle applications that require extremely high levels of reliability, such as life-support systems, aircraft's control systems, or other applications whose failure can be reasonably expected to result in serious physical and/or material damage. Consult with your PROLIFIC representative nearest you before using any PROLIFIC products described or contained herein in such applications.
- ◆ PROLIFIC assumes no responsibility for equipment failures that result from using products at values that exceed, even momentarily, rated values (such as maximum ratings, operating condition ranges, or other parameters) listed in products specifications of any and all PROLIFIC products described or contained herein.

Electrical Characteristics

Characteristic	Symbol	Test Condition	Min.	Typ.	Max.	Units
Supply Voltage	V_{DD}		3		18	V
Output Sink Voltage	$V_{DS(ON)}$	$R_L=30@12V$	0.6	0.66	0.88	V
Output Breakdown Voltage	$V_{BV(ON)}$		18	22	30	V
Supply Current	I_{DD}	Output open@12V			10	mA
Driving Current	I_O	$R_L=25@12V(V_{DS(ON)}=0.8V)$	435	440	450	mA
		$R_L=30@12V$	370	378	380	mA
		$R_L=40@12V$	283	287	288	mA
		$R_L=50@12V$	230	231	232	mA
		$R_L=100@12V$	117	118	118	mA
		$R_L=200@12V$	59.4	59.5	59.6	mA
RD flow-in Current	I_{RD}	Pull-high resistor is 470ohm@12V		25		mA
RD Supply Voltage					18	V
Hin Input Voltage	High		$V_{DD}-1.2$		V_{DD}	V
	Low		GND		0.3	V
Hin Input Current	I_{IN}	Hin=12V		85		uA

R_L : DC impedance of inductor

Truth Table

Hin	O1	O2
H	GND	VDD
L	VDD	GND

Rotation Detector

This driver IC output the RD signal for some special application. For RD application, the driver IC will output high to indicate the motor is stop and low to indicate the motor is normal operation.

Lock Protection

In order to protect the motor, the driver IC will stop to drive the coil when the motor is locked over 0.4 seconds. Then, it restarts to drive the motor after 2.8 seconds. Figure 1 shows the timing diagram between the hall input signal and driver's output state.

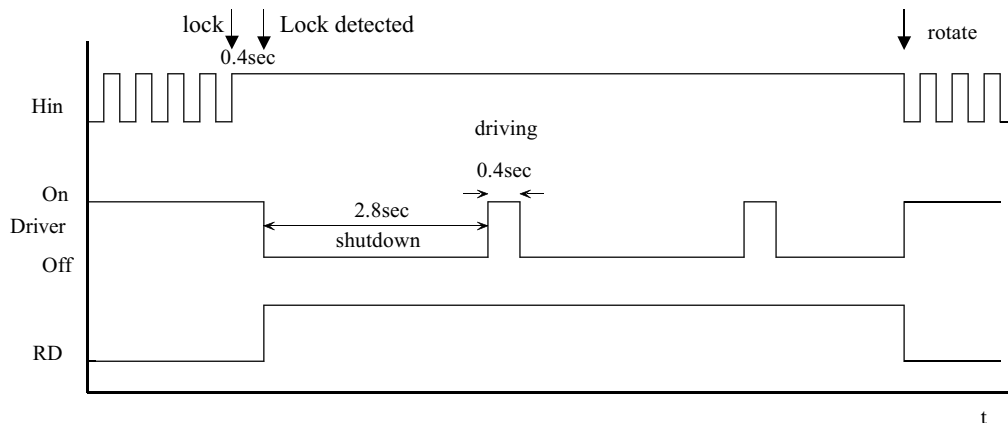


Fig 1. Lock Protection

The driver IC architecture block diagram is shown in Fig. 2

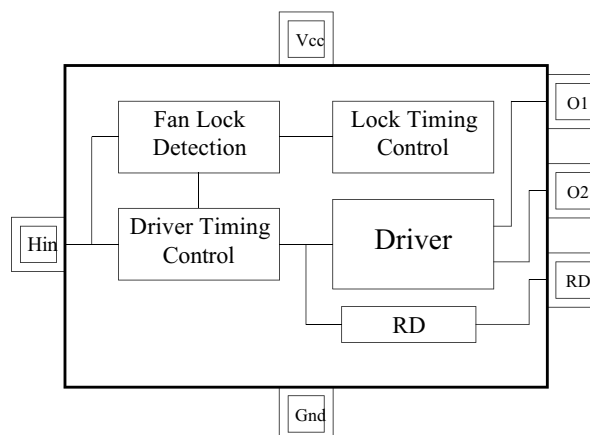
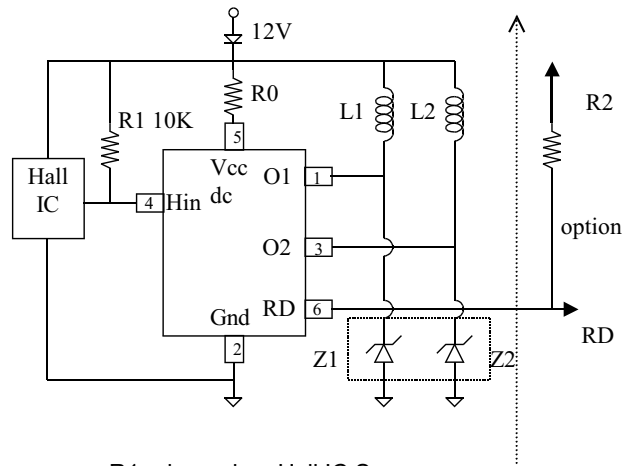


Fig. 2. Driver IC Architecture

Application circuits

Double coil



R1 : depend on Hall IC Spec.
R2 : > 470ohm
Z1,Z2 : 18V Zener diode

Note1 : Z1, Z2 is optional. If the applied coil generate too large count emf (> 30V), the Z1 and Z2 must be added. Vz=18V~20V will be recommended.

Note2 : Z1, Z2 can be replaced by C1 and C2 capacitor 1uF~2.2uF/50V

Note3 : R0=1K is recommended @ 12V.

- ◆ Specifications of any and all PROLIFIC products described or contained herein stipulate the performance, characteristics, and functions of the described products in the independent state, and are not guarantees of the performance, characteristics, and functions of the described products as mounted in the customer's products or equipment. To verify symptoms and states that cannot be evaluated in an independent device, the customer should always evaluate and test devices mounted in the customer's products or equipment.
- ◆ PROLIFIC Technology Inc. strives to supply high-quality high-reliability products. However, any and all semiconductor products fail with some probability. It is possible that these probabilistic failures could give rise to accidents or events that could endanger human lives, that could give rise to smoke or fire, or that could cause damage to other property. When designing equipment, adopt safety measures so that these kinds of accidents or events cannot occur. Such measures include but are not limited to protective circuits and error prevention circuits for safe design, redundant design, and structural design.
- ◆ In the event that any and all PROLIFIC products described or contained herein fall under strategic products (including services) controlled under the Foreign Exchange and Foreign Trade Control Law of Taiwan, such products must not be exported without obtaining export license from the Ministry of International Trade and Industry in accordance with the above law.
- ◆ No part of this publication may be reproduced or transmitted in any form or by any means, electronic or mechanical, including photocopying and recording, or any information storage or retrieval system, or otherwise, without the prior written permission of PROLIFIC Technology Inc.
- ◆ Any and all information described or contained herein are subject to change without notice due to product/technology improvement, etc. When designing equipment, refer to the Delivery Specification for the PROLIFIC product that you intend to use.
- ◆ Information (including circuit diagrams and circuit parameters) herein is for example only; it is not guaranteed for volume production. PROLIFIC believes information herein is accurate and reliable, but no guarantees are made or implied regarding its use or any infringements of intellectual property rights or other rights of third parties.

Specifications and information herein are subject to change without notice.