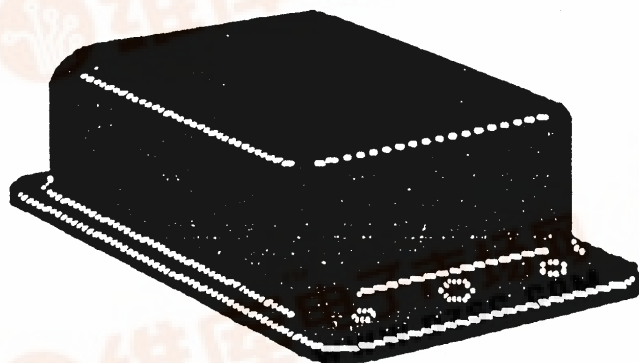


321-220

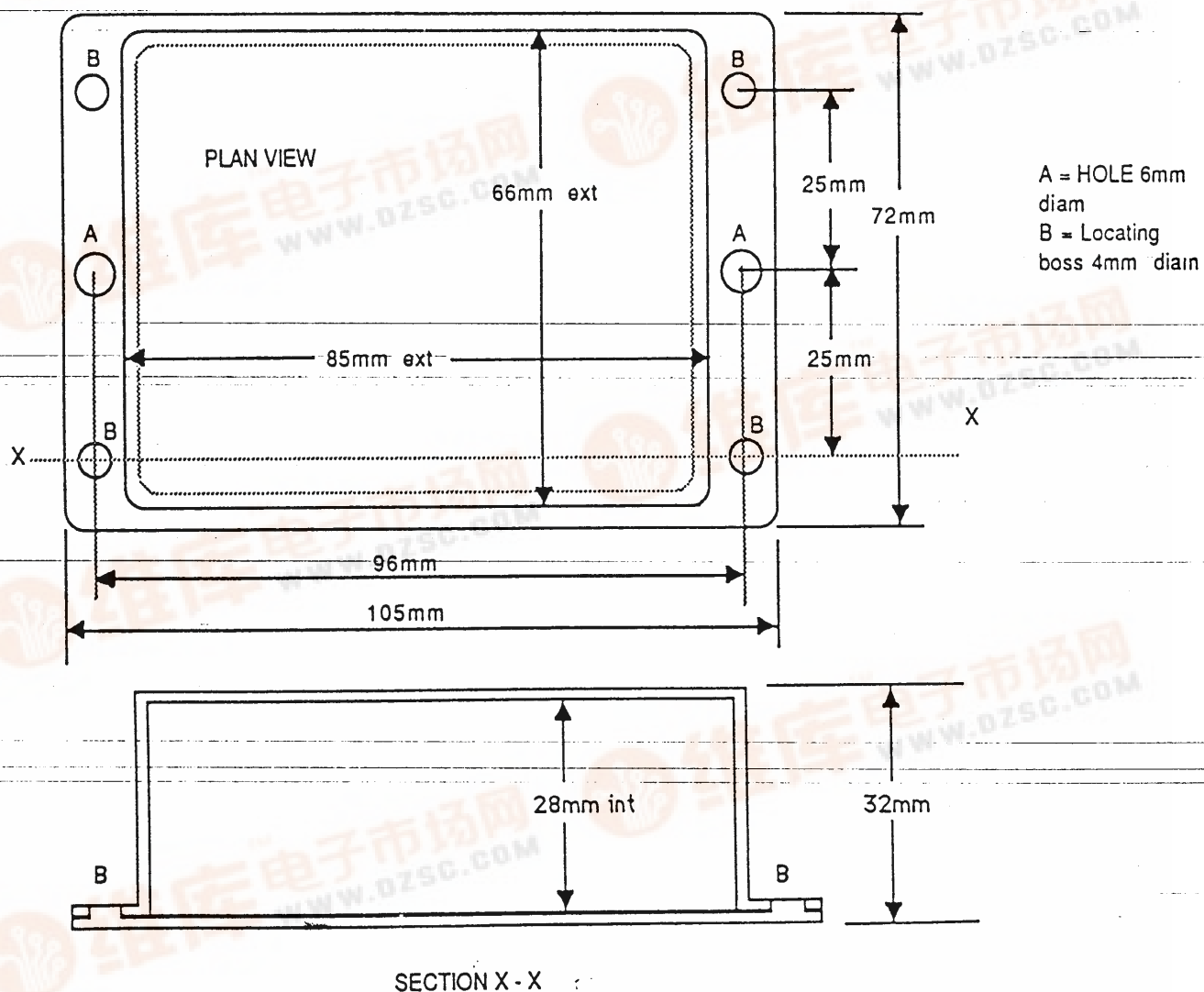
FARNELL ELECTRONIC COMPONENTS LTD

SPECIFICATION SHEET PBL2 - GENERAL PURPOSE BOX WITH BASE



A multi-purpose box moulded in high impact BLACK ABS to give maximum strength. The base is loose fitting and is located by 4 integrally moulded bosses. The two halves will be securely held when the box is clamped to a panel or bulkhead. Alternatively the base can be glued to the box to form a tamper-proof enclosure

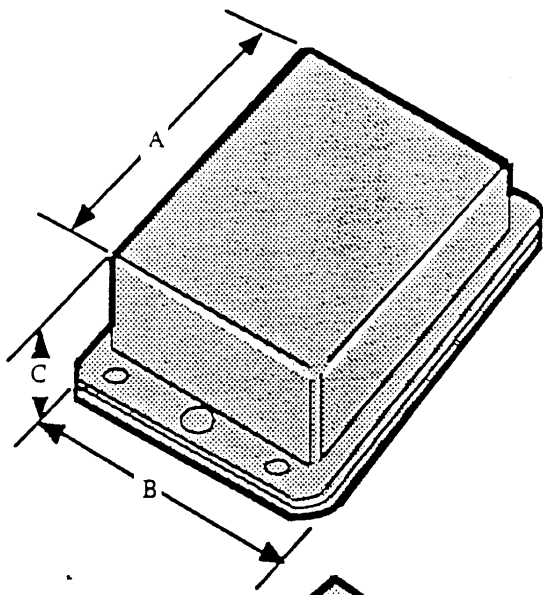
Wall thickness Nominal 2mm
Nominal Taper 2°



NOT TO SCALE

PLT 7/90

301-231



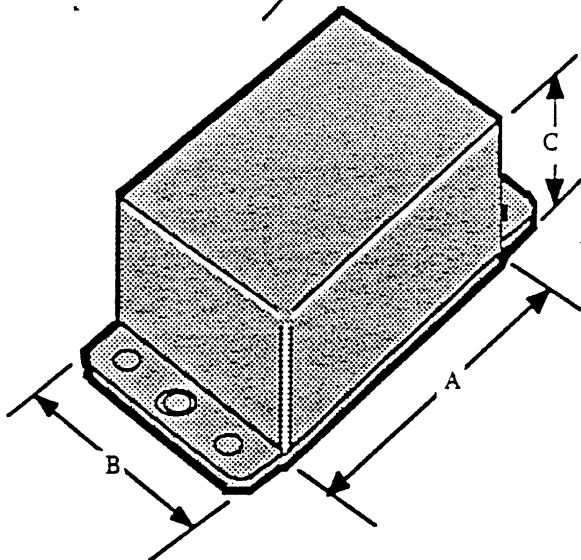
General Purpose Boxes with Base

These boxes are moulded in ABS to give maximum strength but can be easily punched or drilled for individual requirements and to produce a professional looking end product. They are available in black or white as standard but other colours may be available on request should you require to add that individual touch to your products. The base is loose fitting but may be secured in place when the box is clamped to a panel or bulkhead through the two fixing holes. Alternatively the base may be riveted to the box flange to form a tamperproof housing.

	Overall Dimensions mm			Nominal Wall Thickness
	A	B	C	
PBL2	84	72	32	2.0

Overall Length 105mm

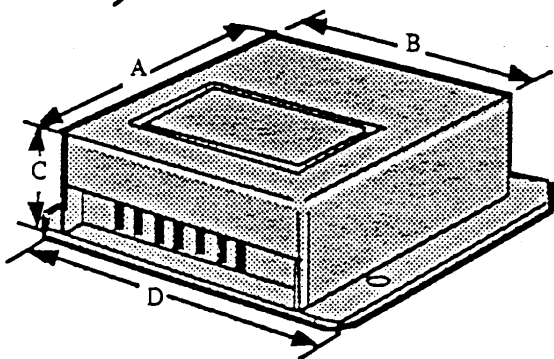
Fixing centres 94mm. 5.0mm diam. holes



	Overall Dimensions mm			Nominal Wall Thickness
	A	B	C	
PBL3	84	64	46	2.0

Overall Length 116mm

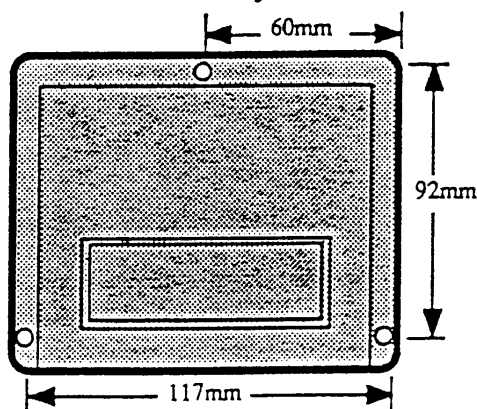
Fixing centres 42 x 100mm. 4.0mm diam. holes



Surface Mounting Box with base

This box is moulded in ABS to give maximum strength but can be easily punched or drilled for individual requirements. This flange mounting case has a separate self-locking base and seven numbered slots are provided for wires or 0.25" PCB mounting blades. A raised panel is provided for labels. The smart appearance makes it ideal for alarms or automotive applications. Standard colour is black but other colours are available to order.

	Overall Dimensions mm				Nominal Wall Thickness
	A	B	C	D	
PBL7	100	95	42	120	2.0



All dimensions are external and in mm.

211093