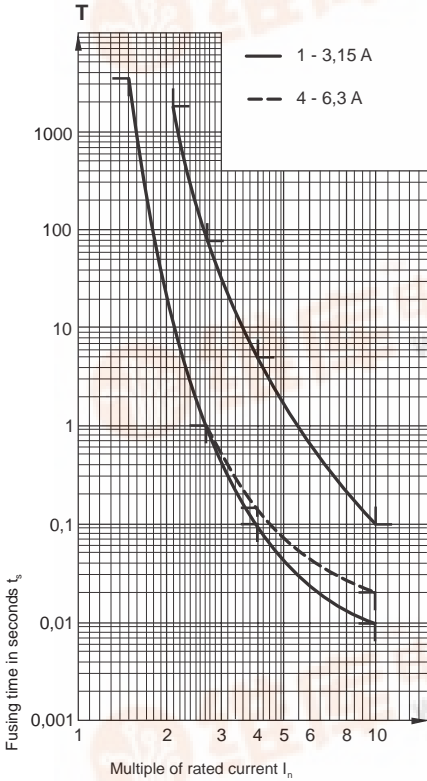


SPT 5 x 20mm Time Lag Fuses – High Breaking Capacity



Built according to IEC 127-2/5, EN 60127, SEV 1064, and SEMKO 104-1976. Recommended if the short circuit current through the fuse-link is more than 35A or $10 \times I_n$, whichever is greater (CENELEC Jan 1, 1993).



Approvals:

UL	recognition	500mA-16A*	File #E41599
CSA	acceptance	500mA-16A*	File #LR51172
VDE	approval	1A-6.3A	File #75036
SEMKO	approval	1A-6.3A	File numbers on request
SEV	approval	1A-6.3A	

* fuses with pigtail leads approved up to 8A (factory assembled only)

Ceramic or glass tube
Sand filled



NEW



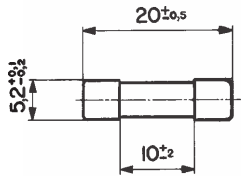
New version with gold plated caps for direct pcb mounting

cUL	recognition	1A-16A/250V**	pending
VDE	approval	1A-6.3A/250V**	pending

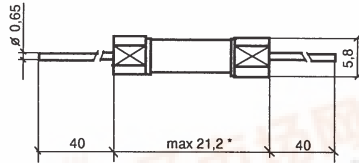
**Contact Schurter for part numbers

Time Current Characteristics

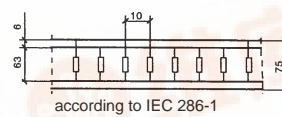
rated current I_n	$n \cdot I_n$	$1.5 \cdot I_n$		$2.1 \cdot I_n$		$2.75 \cdot I_n$		$4 \cdot I_n$		$10 \cdot I_n$	
		min.	max.	min.	max.	min.	max.	min.	max.	min.	max.
SCHURTER IEC	500mA – 800mA 1A – 3.15A	60 min.	30 min.	1 s	80 s	95 ms	5 s	10 ms	100 ms		
IEC SCHURTER	4A – 6.3A 8A – 16A	60 min.	30 min.	1 s	80 s	150 ms	5 s	20 ms	100 ms		



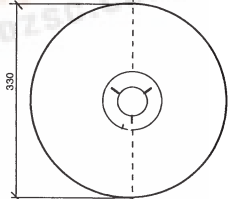
With pigtail leads



Tape



Spool



Order Numbers	Rated current / rated voltage	Breaking capacity	Voltage drop at I_n		Power dissipation at $1.5 \cdot I_n$			Pre-arcing I^2t at $10 \cdot I_n$	Approvals				
			max. IEC 127 mV	typical Schurter mV	max. IEC 127 Watts	max. Schurter Watts	typical Schurter Watts		UL	CSA	VDE	SEMKO	SEV
0001.2501	500 mA* / 250V	UL: 10,000A / 125V, p.f. 0.7-0.8 IEC: 1,500A / 250V, p.f. 0.7-0.8	250	360	2.5	0.7	0.5	0.50	•	•	•	•	•
0001.2502	630 mA* / 250V			330				0.5					
0001.2503	800 mA* / 250V			260				0.5					
0001.2504	1 A / 250V			180				0.5					
0001.2505	1.25 A / 250V			150				0.5					
0001.2506	1.6 A / 250V			200				0.5					
0001.2507	2 A / 250V			190				0.6					
0001.2508	2.5 A / 250V			180				0.6					
0001.2509	3.15 A / 250V			140				0.8					
0001.2510	4 A / 250V			90				0.9					
0001.2511	5 A / 250V			100				1.2					
0001.2512	6.3 A / 250V			100				1.5					
			100	70	4.0	1.7	1.2	171	•	•	•	•	•
0001.2513	8 A* / 250V	UL:1,000A / 250V, p.f. 1	70	70	1.9	1.3	268	•	•	•	•	•	
0001.2514	10 A* / 250V			70				2.1	400	•	•	•	•
0001.2515	12.5 A* / 250V			70				3.1	563	•	•	•	•
0001.2516	16 A* / 250V			70				4.0	1272	•	•	•	•

Not addressed in the standards

For pigtail fuses packaged loose: reference .PT after part number (e.g. 0001.2501.PT)

For pigtail fuses on 1,000-piece tape and reel: reference .TR after part number (e.g. 0001.2501.TR)

