

**AC Film Capacitors**

**B 32330**

**Motor run**

**B 32332**

**Construction**

- Dielectric: polypropylene film
- Aluminum can
- Soft polyurethane resin

**Features**

- Self-healing properties
- Low dissipation factor
- Overpressure disconnecter
- High insulation resistance

**Typical applications**

For general sine wave applications, mainly as motor run capacitor

**Terminals**

- Single (B32330 series) or Double (B32332 series) fast on 6,3 x 0,8 mm

**Mounting parts**

- Metal stud (max. torque = 5 Nm)

**Technical data and specifications**



Standard	IEC / EN 60252
Rated capacitance $C_N$	3 ... 60 $\mu$ F
Tolerance	$\pm 5\%$ , $\pm 6\%$ , $\pm 10\%$
Rated voltage $U_N$	250 ... 450 Vac
Rated frequency $f_N$	50...60Hz
Life expectance	10.000 h (class B)

**Maximum ratings**

Maximum permissible voltage $U_{max}$	$1,1 \times U_n$ ( $U_n$ = Rated voltage)
Maximum permissible current $I_{max}$	$1,3 \times I_n$ ( $I_n$ = Rated current)

**Test data**

AC test voltage terminal to terminal $U_{TT}$	$2 \times U_n$ , 60s.
Insulation voltage terminals to case	2000 Vac, 60s.
Insulation resistance $R_{is}$ or time constant $\tau$ at 20 °C Rel. Humidity $\leq 65$ °C (minimum value)	3000 s
Dissipation factor $\tan\delta$ at 20 °C	$\leq 1,0 \times 10^{-3}$ (120 Hz)
Maximum rate of voltage rise $du/dt_{max}$	10 V/ $\mu$ s

**Technical data (cont`d)**
**Climatic data**

Climatic category	25/085/21 (according to IEC 60068-1)
Lower category $T_{\min}$	-25 °C
Upper category $T_{\max}$	+85 °C
Damp heat test $t_{\text{test}}$	21 days
Permitted capacitance $\Delta C/C$	$\leq 3 \%$

**Approved marks**


UL 810 #  
10000 AFC



EN 60252\*

# Currently available in Icotron

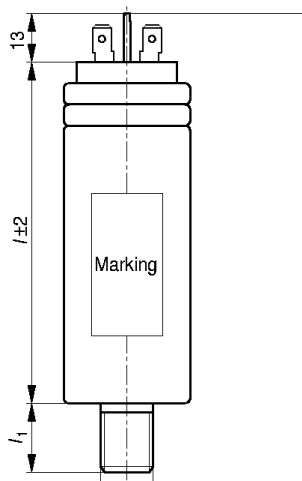
\* VDE approval only for 400 and 450V.

**Note :**

- 1) It should be noted that presence of harmonics produces over voltage & over current on capacitors. Resonance may cause serious damage to installation if a significant level of total harmonic distortion level exists for voltage or current. In such cases, series reactors must be considered.
- 2) Operating temperature class: in accordance with the reference standards, these temperatures are those measured on the surface on the capacitor.

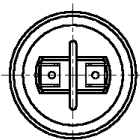
Dimensional drawings

B32332 Series



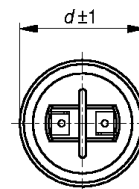
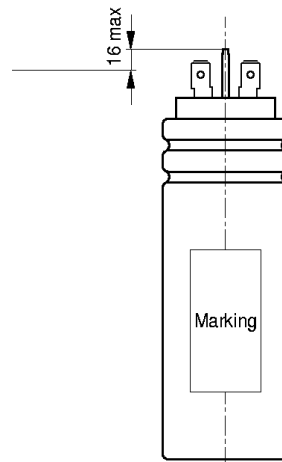
M8 for  $\varnothing d = 30 - 53$  ( $l_1 = 10$ )  
M12 for  $\varnothing d = 63,5$  ( $l_1 = 16$ )

According to DIN 6797-A  
According to DIN 934



KMK0502-U

B32330 Series



KMK0503-3



Ordering codes and packing units

U <sub>N</sub> [Vac]	C <sub>N</sub> [μF]	Max. dimensions d x l [mm]	Ordering code B3233*	Packing units
250	4	30 x 68	-B1405-+0 <sup>**</sup>	112
	5	30 x 68	-B1505-+0 <sup>**</sup>	112
	6	30 x 68	-B1605-+0 <sup>**</sup>	112
	7	30 x 68	-B1705-+0 <sup>**</sup>	112
	8	30 x 68	-B1805-+0 <sup>**</sup>	112
	10	30 x 68	-B1106-+0 <sup>**</sup>	112
	12	30 x 68	-B1126-+0 <sup>**</sup>	112
	15	35 x 68	-B1156-+0 <sup>**</sup>	84
	20	35 x 68	-B1206-+0 <sup>**</sup>	84
	25	35 x 78	-B1256-+0 <sup>**</sup>	84
	30	40 x 78	-B1306-+0 <sup>**</sup>	45
	35	40 x 78	-B1356-+0 <sup>**</sup>	45
	40	40 x 78	-B1406-+0 <sup>**</sup>	45
	45	40 x 78	-B1456-+0 <sup>**</sup>	45
	50	40 x 103	-B1506-+0 <sup>**</sup>	45
	55	40 x 103	-B1556-+0 <sup>**</sup>	45
60	40 x 103	-B1606-+0 <sup>**</sup>	45	
400	4	30 x 68	B4405-+0 <sup>**</sup>	112
	5	30 x 68	-B4505-+0 <sup>**</sup>	112
	6	30 x 68	-B4605-+0 <sup>**</sup>	112
	7	30 x 78	-B4705-+0 <sup>**</sup>	112
	8	30 x 78	-B4805-+0 <sup>**</sup>	112
	10	30 x 78	-B4106-+0 <sup>**</sup>	112
	12	35 x 78	-B4126-+0 <sup>**</sup>	84
	15	40 x 78	-B4156-+0 <sup>**</sup>	45
	20	40 x 78	-B4206-+0 <sup>**</sup>	45
	25	40 x 103	-B4256-+0 <sup>**</sup>	45
	30	40 x 103	-B4306-+0 <sup>**</sup>	45


**AC Film Capacitors**
**B 32330**
**Motor run**
**B 32332**

U <sub>N</sub> [Vac]	C <sub>N</sub> [μF]	Max. dimensions d x l [mm]	Ordering code B3233*	Packing units
400 (cont.)	35	45 x 103	-B4356-+0**	45
	40	50 x 103	-B4406-+0**	32
	45	50 x 103	-B4456-+0**	32
	50	53 x 103	-B4506-+0**	32
	60	53 x 130	-B4606-+0**	32
450	3	30 x 68	-B6305-+0**	112
	4	30 X 68	-B6405-+0**	112
	5	30 x 78	-B6505-+0**	112
	6	30 x 78	-B6605-+0**	112
	7	30 x 78	B6705-+0**	112
	8	35 x 78	-B6805-+0**	84
	10	40 x 78	-B6106-+0**	45
	12	40 x 78	-B6126-+0**	45
	15	40 x 103	-B6156-+0**	45
	20	40 x 103	-B6206-+0**	45
	25	45 x 103	-B6256-+0**	45
	30	50 x 103	-B6306-+0**	32
	35	50 x 103	-B6356-+0**	32
	40	53 x 103	-B6406-+0**	32
	45	53 x 140	-B6456-+0**	32
	50	53 x 140	-B6506-+0**	32
	55	63.5 x 140	-B6556-+0**	28
	60	63.5 x 140	-B6606-+0**	28

**Notes for ordering code:**

1. Replace \* by : 0 - single tab fast-on.  
2 - double tab fast-on.
2. For capacitance tolerance replace + by : J - ±5%, E - ±6%, K - ±10%
3. Replace \*\* by : 50 - aluminum can  
70 - aluminum can with  
M 8 fixing threaded bolt for ≤ φ 53mm.  
M 12 fixing threaded bolt for φ 63.5mm.

© EPCOS AG 2000. All Rights Reserved. Reproduction, publication and dissemination of this data sheet, enclosures hereto and the information contained therein without EPCOS' prior express consent is prohibited.

The information contained in this data sheet describes the type of component and shall not be considered as guaranteed characteristics. Purchase orders are subject to the General Conditions for the Supply of Products and Services of the Electrical and Electronics Industry recommended by the ZVEI (German Electrical and Electronic Manufacturers' Association), unless otherwise agreed.