



SAW Components

Data Sheet B3824

Data Sheet

EPCOS



SAW Components

B3824

Low-Loss Filter

1910 MHz

Data Sheet

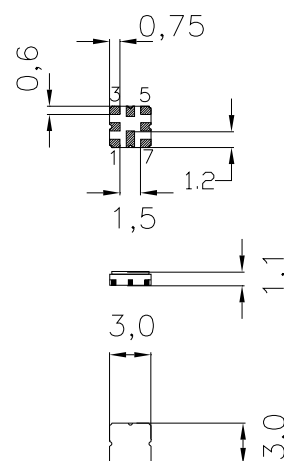
SMD ceramic package **QCC8D**

Features

- Very low loss RF filter
- Unbalanced to unbalanced or unbalanced to balanced operation
- Package for **S**urface **M**ounted **T**echnology (**SMT**)

Terminals

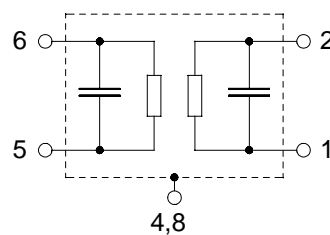
- Ni, gold-plated



Dimensions in mm, approx. weight 0,037 g

Pin configuration

- 6 Input
- 5 Input ground
- 2 Output, balanced
- 1 Output, balanced
- 3, 7 To be grounded
- 4, 8 Case - ground



Type	Ordering code	Marking and Package according to	Packing according to
B3824	B39192-B3824-U810	C61157-A7-A72-5	F61074-V8168-Z000

Electrostatic Sensitive Device (ESD)

Maximum ratings

Operable temperature range	T	- 40/+ 85	°C
Storage temperature range	T_{stg}	- 40/+ 85	°C
DC voltage	V_{DC}	0	V
Source power	P_s	3	dBm



SAW Components

B3824

Low-Loss Filter

1910 MHz

Data Sheet

Characteristics

Operating temperature range:	T_A	=	-5 ... +85 °C
Terminating source impedance:	Z_S	=	50 Ω unbalanced
Terminating load impedance:	Z_L	=	50 Ω balanced

		min.	typ.	max.	
Nominal frequency	f_N	—	1910	—	MHz
Maximum insertion attenuation	α_{\max}				
1900 MHz ... 1920 MHz		—	2,0	3,0	dB
Amplitude ripple in passband (p-p)	$\Delta\alpha$				
over any 4 MHz within					
1900 MHz ... 1920 MHz		—	0,5	0,7	dB
Group delay ripple in passband (p-p)	$\Delta\alpha$				
over any 4 MHz within					
1900 MHz ... 1920 MHz		—	2,5	4,0	ns
Attenuation	α_{abs}				
100,0 MHz ... 1540 MHz		28	33	—	dB
1540 MHz ... 1810 MHz		33	37	—	dB
1810 MHz ... 1825 MHz		31	34	—	dB
2020 MHz ... 5000 MHz		15	20	—	dB
VSWR					
1900 MHz ... 1920 MHz		—	1,8:1	2,4:1	
Deviation from linear phase (p-p)					
over any 4 MHz within					
1900 MHz ... 1920 MHz		—	0,8	1,3	°



SAW Components

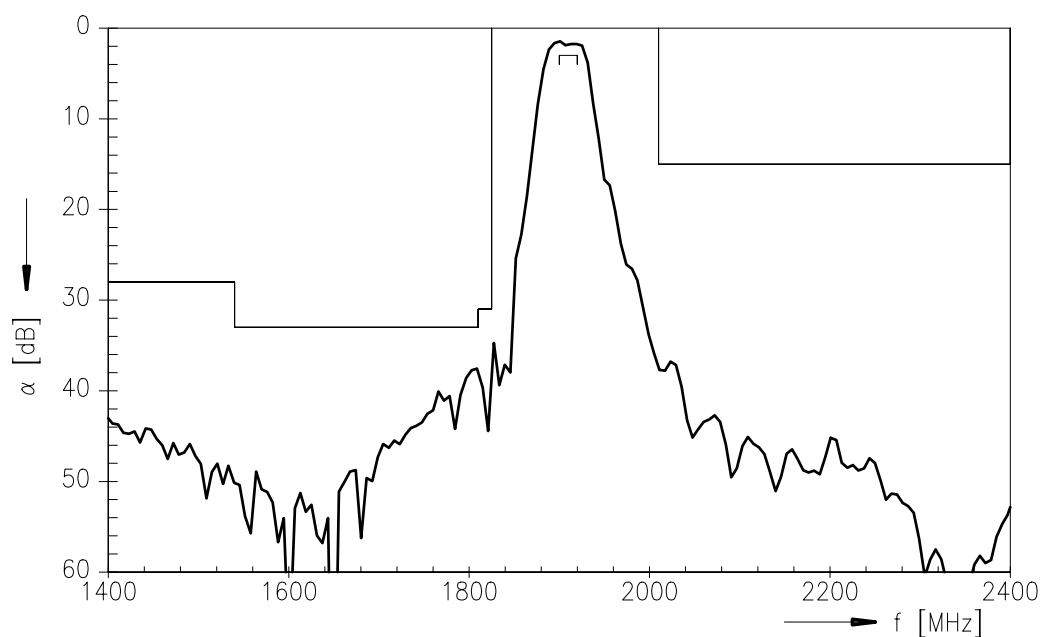
B3824

Low-Loss Filter

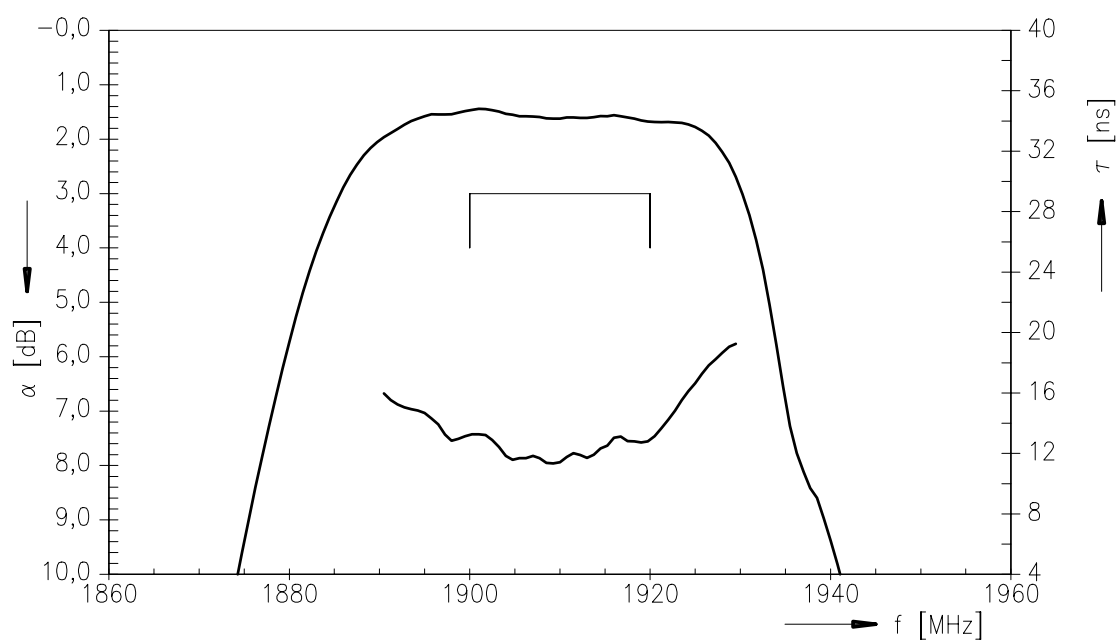
1910 MHz

Data Sheet

Transfer function



Transfer function (pass band)





SAW Components	B3824
Low-Loss Filter	1910 MHz

Data Sheet

Published by EPCOS AG

Surface Acoustic Wave Components Division, SAW MC IS

P.O. Box 80 17 09, 81617 Munich, GERMANY

© EPCOS AG 2002. Reproduction, publication and dissemination of this brochure and the information contained therein without EPCOS' prior express consent is prohibited.

Purchase orders are subject to the General Conditions for the Supply of Products and Services of the Electrical and Electronics Industry recommended by the ZVEI (German Electrical and Electronic Manufacturers' Association), unless otherwise agreed.

This brochure replaces the previous edition.

For questions on technology, prices and delivery please contact the Sales Offices of EPCOS AG or the international Representatives.

Due to technical requirements components may contain dangerous substances. For information on the type in question please also contact one of our Sales Offices.