



SAW Components

Data Sheet B7631





SAW Components

B7631

Low-Loss Filter for Mobile Communication

1765 / 1855 MHz

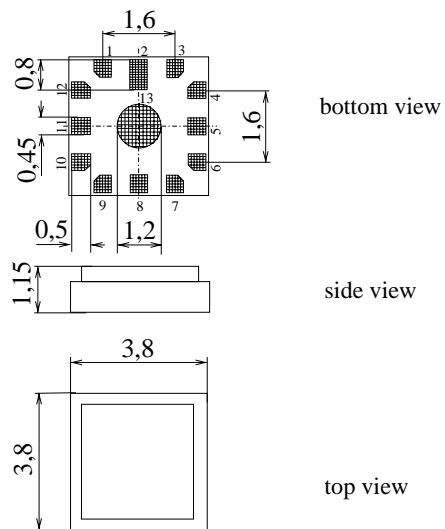
Data Sheet



Chip sized SAW package **QCS12F**

Features

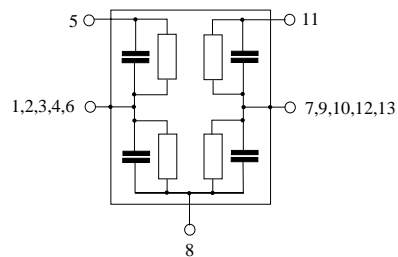
- Low-loss duplexer for Korean PCS mobile telephone systems
- 50 Ω ports by integrated matching network
- Multifunctional ceramic base material for **Surface Mounted Technology (SMT)**
- Small size and low height



Dimensions in mm, approx. weight 0,08 g

Pin configuration

- 11 TX Input
- 5 RX Output
- 8 Antenna
- 1, 2, 3, 4, 6 Ground
- 7, 9, 10, 12, 13 Ground



Type	Ordering code	Marking and Package according to	Packing according to
B7631	B39192-B7631-D910	C61157-A3-A6	F61074-V8194-Z000

Electrostatic Sensitive Device (ESD)

Maximum ratings

Operable temperature range	T	- 30/+ 85	°C	source and load impedance 50 Ω } continuous wave
Storage temperature range	T_{stg}	- 40/+ 85	°C	
DC voltage	V_{DC}	0	V	
Input power max.	P_{IN}	28	dBm	
1750,0 ... 1780,0 MHz elsewhere		10	dBm	



SAW Components

B7631

Low-Loss Filter for Mobile Communication

1765 / 1855 MHz

Data Sheet



Characteristics

Operating temperature range $T = 25 \pm 2^\circ\text{C}$
 ANT terminating impedance $Z_{\text{ANT}} = 50 \Omega$
 RX terminating impedance $Z_{\text{RX}} = 50 \Omega$
 TX terminating impedance $Z_{\text{TX}} = 50 \Omega$

Characteristics TX - ANT		min.	typ.	max.	
Center frequency	f_c	—	1765,00	—	MHz
Maximum insertion attenuation	α_{max}				
	1750,00 ... 1780,00 MHz	—	2,0	2,3	dB
Amplitude ripple (p-p)	$\Delta\alpha$				
	1750,00 ... 1780,00 MHz	—	0,6	1,2	dB
Return loss					
	1750,00 ... 1780,00 MHz	8,0	10,0	—	dB
Attenuation	α				
	1840,00 ... 1870,00 MHz	40	43	—	dB
	2000,00 ... 3000,00 MHz	25	32	—	dB

Characteristics ANT - RX		min.	typ.	max.	
Center frequency	f_c	—	1855,00	—	MHz
Maximum insertion attenuation	α_{max}				
	1840,00 ... 1870,00 MHz	—	2,6	3,3	dB
Amplitude ripple (p-p)	$\Delta\alpha$				
	1840,00 ... 1870,00 MHz	—	0,4	1,0	dB
Return loss					
	1840,00 ... 1870,00 MHz	9,0	10,0	—	dB
Attenuation	α				
	1750,00 ... 1780,00 MHz	52	56	—	dB
	2000,00 ... 3000,00 MHz	35	43	—	dB

Characteristics TX - RX		min.	typ.	max.	
Isolation between TX and RX path	α				
	1750,00 ... 1780,00 MHz	55	59	—	dB
	1840,00 ... 1870,00 MHz	43	45	—	dB



SAW Components

B7631

Low-Loss Filter for Mobile Communication

1765 / 1855 MHz

Data Sheet



Characteristics

Operating temperature range $T = -30$ to 85°C
 ANT terminating impedance $Z_{\text{ANT}} = 50\ \Omega$
 RX terminating impedance $Z_{\text{RX}} = 50\ \Omega$
 TX terminating impedance $Z_{\text{TX}} = 50\ \Omega$

Characteristics TX - ANT		min.	typ.	max.	
Center frequency	f_c	—	1765,00	—	MHz
Maximum insertion attenuation	α_{max}				
	1750,00 ... 1780,00 MHz	—	2,1	2,5	dB
Amplitude ripple (p-p)	$\Delta\alpha$				
	1750,00 ... 1780,00 MHz	—	0,8	1,5	dB
Return loss					
	1750,00 ... 1780,00 MHz	8,0	10,0	—	dB
Attenuation	α				
	1840,00 ... 1870,00 MHz	40	43	—	dB
	2000,00 ... 3000,00 MHz	25	32	—	dB

Characteristics ANT - RX		min.	typ.	max.	
Center frequency	f_c	—	1855,00	—	MHz
Maximum insertion attenuation	α_{max}				
	1840,00 ... 1870,00 MHz	—	2,7	3,5	dB
Amplitude ripple (p-p)	$\Delta\alpha$				
	1840,00 ... 1870,00 MHz	—	0,5	1,3	dB
Return loss					
	1840,00 ... 1870,00 MHz	9,0	10,0	—	dB
Attenuation	α				
	1750,00 ... 1780,00 MHz	52	55	—	dB
	2000,00 ... 3000,00 MHz	35	43	—	dB

Characteristics TX - RX		min.	typ.	max.	
Isolation between TX and RX path	α				
	1750,00 ... 1780,00 MHz	54	55	—	dB
	1840,00 ... 1870,00 MHz	42	44	—	dB



SAW Components

B7631

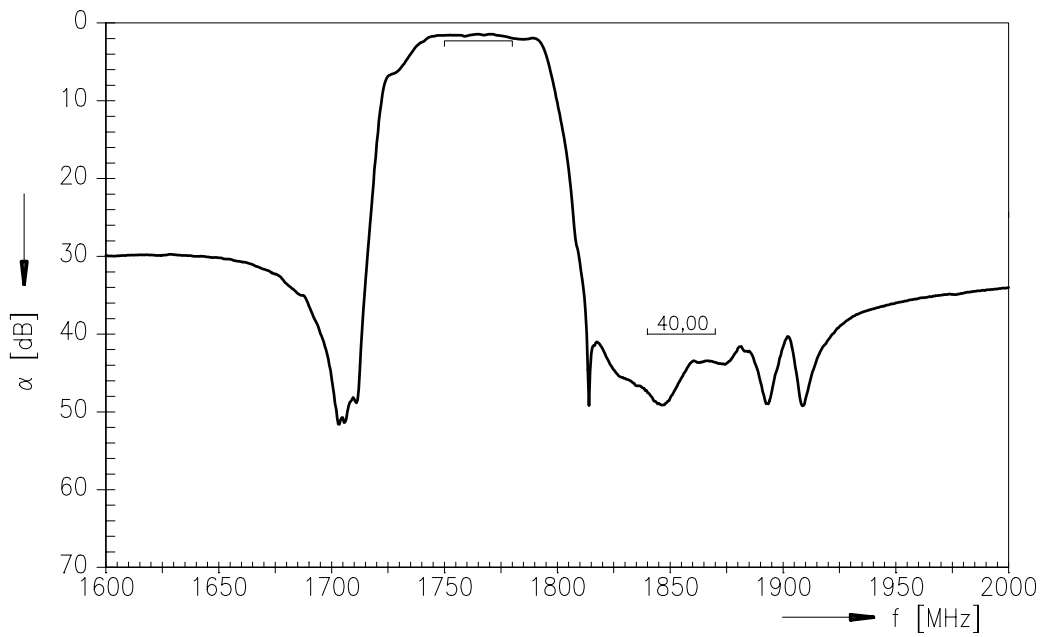
Low-Loss Filter for Mobile Communication

1765 / 1855 MHz

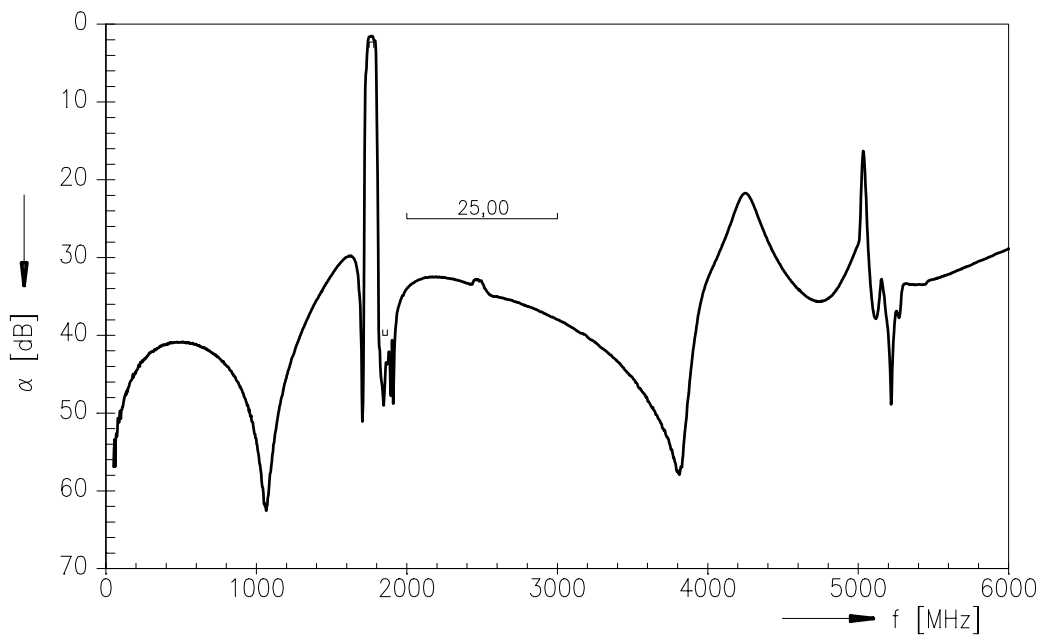
Data Sheet



Frequency Response TX - ANT



Frequency Response TX - ANT (wideband)





SAW Components

B7631

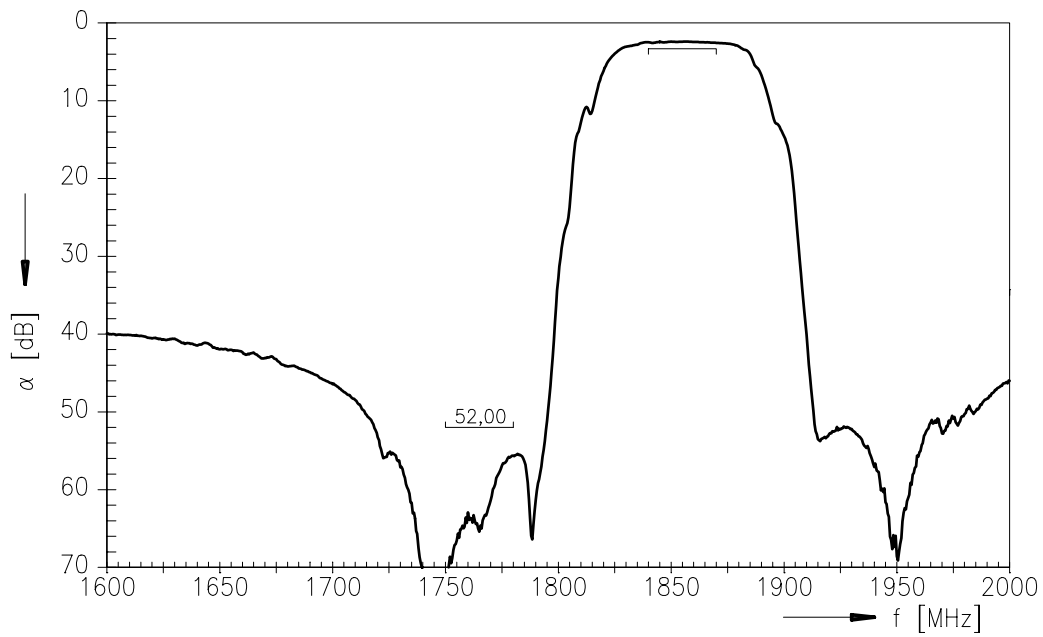
Low-Loss Filter for Mobile Communication

1765 / 1855 MHz

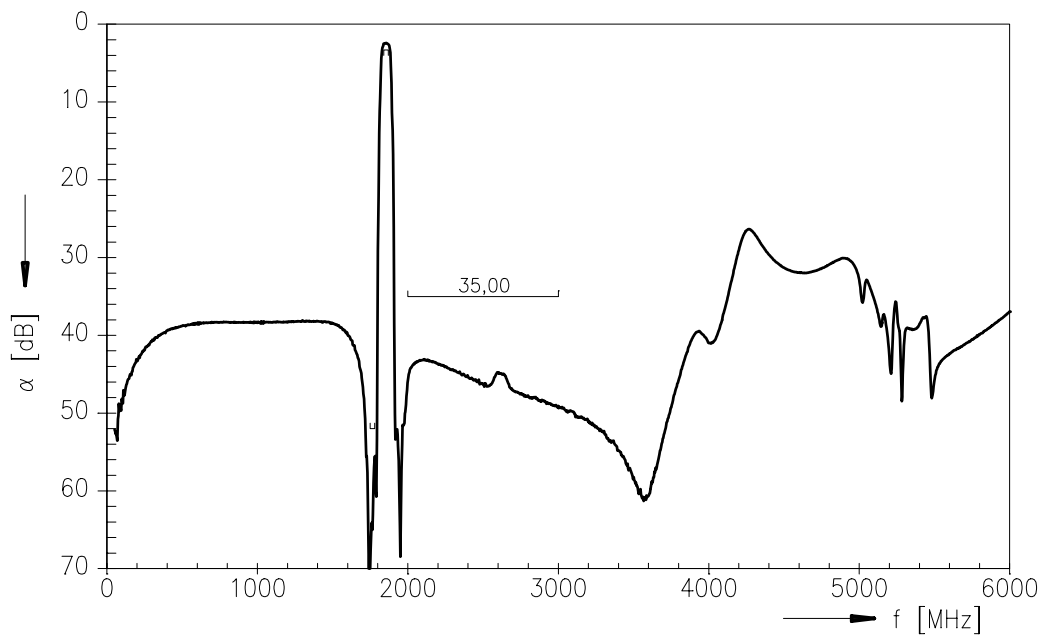
Data Sheet



Frequency Response ANT - RX



Frequency Response ANT - RX (wideband)





SAW Components

B7631

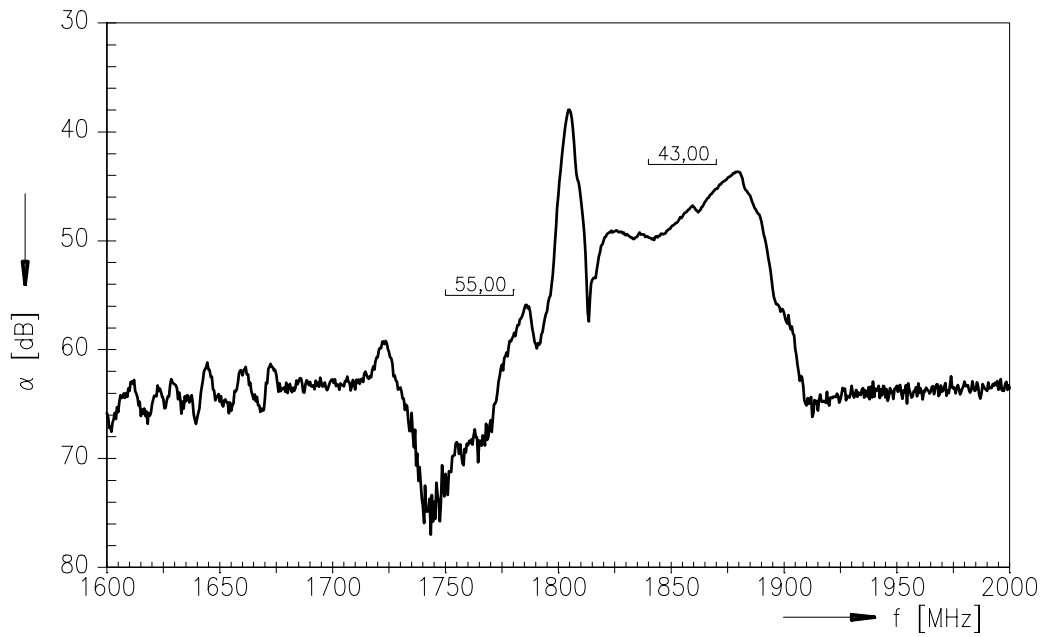
Low-Loss Filter for Mobile Communication

1765 / 1855 MHz

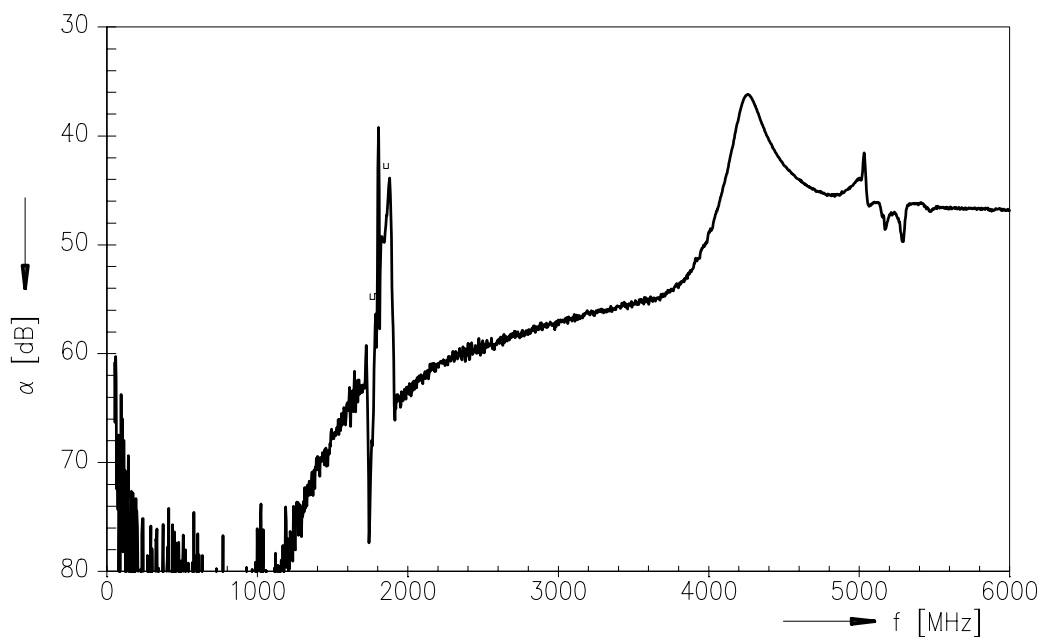
Data Sheet



Frequency Response TX - RX



Frequency Response TX - RX (wideband)





SAW Components

B7631

Low-Loss Filter for Mobile Communication

1765 / 1855 MHz

Data Sheet



Published by EPCOS AG

Surface Acoustic Wave Components Division, SAW MC WT

P.O. Box 80 17 09, 81617 Munich, GERMANY

© EPCOS AG 2003. Reproduction, publication and dissemination of this brochure and the information contained therein without EPCOS' prior express consent is prohibited.

Purchase orders are subject to the General Conditions for the Supply of Products and Services of the Electrical and Electronics Industry recommended by the ZVEI (German Electrical and Electronic Manufacturers' Association), unless otherwise agreed.

This brochure replaces the previous edition.

For questions on technology, prices and delivery please contact the Sales Offices of EPCOS AG or the international Representatives.

Due to technical requirements components may contain dangerous substances. For information on the type in question please also contact one of our Sales Offices.