



## High-Resolution Analog-to-Digital Converter

### FEATURES

- **High Resolution:**  
–130dB SNR (250SPS, High-Resolution Mode)  
–127dB SNR (250SPS, Low-Power Mode)
- **High Accuracy:**  
THD: –120dB  
INL: 0.8ppm
- **Low-Noise PGA**
- **Two-Channel Input MUX**
- **Inherently-Stable Modulator with Fast Responding Over-Range Detection**
- **Flexible Digital Filter:**  
Sinc + FIR + IIR (Selectable)  
Linear or Minimum Phase Response  
Programmable High-Pass Filter  
Selectable FIR Data Rates: 250SPS to 4kSPS
- **Filter Bypass Option**
- **Low Power Consumption:**  
High-Resolution Mode: 27mW  
Low-Power Mode: 16mW  
Shutdown: 10 $\mu$ W
- **Offset and Gain Calibration Engine**
- **Synchronization Input**
- **Analog Supply:**  
Unipolar (+5V) or Bipolar ( $\pm$ 2.5V)
- **Digital Supply: 1.8V to 3.3V**

### APPLICATIONS

- **Energy Exploration**
- **Seismic Monitoring**
- **High-Accuracy Instrumentation**

### DESCRIPTION

The ADS1282 is an extremely high-performance, single-chip analog-to-digital converter (ADC) with an integrated, low-noise programmable gain amplifier (PGA) and two-channel input MUX. The ADS1282 is suitable for the demanding needs of energy exploration and seismic monitoring environments.

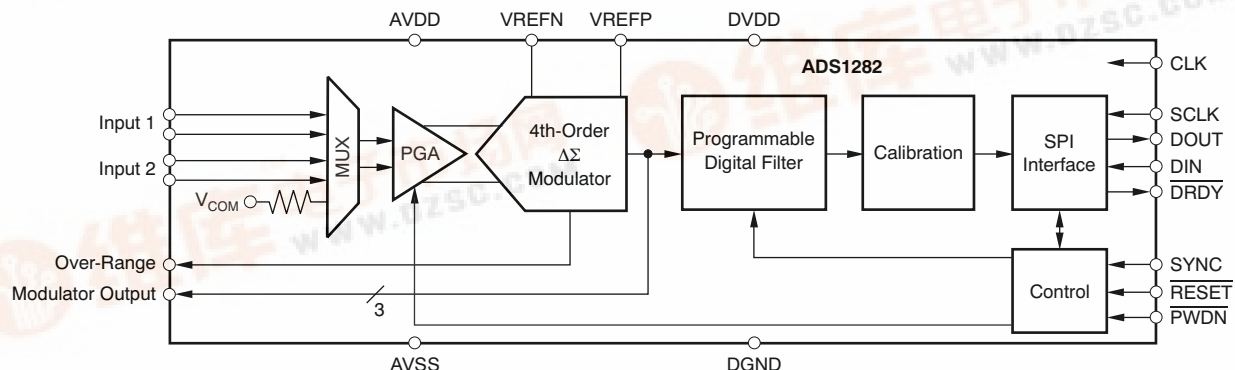
The converter uses a fourth-order, inherently stable, delta-sigma ( $\Delta\Sigma$ ) modulator that provides outstanding noise and linearity performance. The modulator is used either in conjunction with the on-chip digital filter, or can be bypassed for use with post processing filters.

The flexible input MUX provides an additional external input for measurement, as well as internal self-test connections. The PGA features very low noise (4nV/ $\sqrt{\text{Hz}}$ ) and high input impedance, allowing easy interfacing to geophones and hydrophones.

The digital filter provides selectable data rates from 250 to 4000 samples per second (SPS). The high-pass filter (HPF) features an adjustable corner frequency. On-chip gain and offset scaling registers supports system calibration.

The synchronization input (SYNC) can be used to synchronize the conversions of multiple ADS1282s. The SYNC input also accepts a clock input for continuous alignment of conversions from an external source.

Two operating modes allow optimization of noise and power. Together, the amplifier, modulator, and filter dissipate 27mW and only 16mW in low-power mode. The ADS1282 is available in a compact TSSOP-28 package and is fully specified from  $-40^{\circ}\text{C}$  to  $+85^{\circ}\text{C}$ , with a maximum operating range to  $+125^{\circ}\text{C}$ .



PRODUCT PREVIEW



Please be aware that an important notice concerning availability, standard warranty, and use in critical applications of Texas Instruments semiconductor products and disclaimers thereto appears at the end of this data sheet. All trademarks are the property of their respective owners.



This integrated circuit can be damaged by ESD. Texas Instruments recommends that all integrated circuits be handled with appropriate precautions. Failure to observe proper handling and installation procedures can cause damage.

ESD damage can range from subtle performance degradation to complete device failure. Precision integrated circuits may be more susceptible to damage because very small parametric changes could cause the device not to meet its published specifications.

**ORDERING INFORMATION**

For the most current package and ordering information see the Package Option Addendum at the end of this document, or see the TI web site at [www.ti.com](http://www.ti.com).

**ABSOLUTE MAXIMUM RATINGS<sup>(1)</sup>**

Over operating free-air temperature range (unless otherwise noted).

|                               | <b>ADS1282</b>           | <b>UNIT</b> |
|-------------------------------|--------------------------|-------------|
| AVDD to AVSS                  | -0.3 to +5.5             | V           |
| AVSS to DGND                  | -2.8 to +0.3             | V           |
| DVDD to DGND                  | -0.3 to +3.9             | V           |
| Input current                 | 100, momentary           | mA          |
| Input current                 | 10, continuous           | mA          |
| Analog input voltage          | AVSS - 0.3 to AVDD + 0.3 | V           |
| Digital input voltage to DGND | -0.3 to DVDD + 0.3       | V           |
| Maximum junction temperature  | +150                     | °C          |
| Operating temperature range   | -40 to +125              | °C          |
| Storage temperature range     | -60 to +150              | °C          |

(1) Stresses above these ratings may cause permanent damage. Exposure to absolute maximum conditions for extended periods may degrade device reliability. These are stress ratings only, and functional operation of the device at these or any other conditions beyond those specified is not implied.

## ELECTRICAL CHARACTERISTICS

Limit specifications at –40°C to +85°C. Typical specifications at +25°C, AVDD = +2.5V, AVSS = –2.5V,  $f_{CLK}^{(1)} = 4.096\text{MHz}$ , VREFP = +2.5V, VREFN = –2.5V, DVDD = +3.3V, Chopping on, PGA = 1, High-Resolution Mode, and  $f_{DATA} = 1000\text{SPS}$ , unless otherwise noted.

| PARAMETER                                     | CONDITIONS               | ADS1282                                       |                                   |             | UNIT                 |
|---|--------------------------|---|-----------------------------------|-------------|----------------------|
|   |                          | MIN   | TYP                               | MAX         |                      |
| <b>ANALOG INPUTS</b>                          |                          |   |                                   |             |                      |
| Full-scale input voltage                      | $V_{IN} = (AINP - AINN)$ |   | $\pm V_{REF}/2 \times \text{PGA}$ |             | V                    |
| Absolute input range                          | (AINP or AINN)           | AVSS + 0.7                                    |                                   | AVDD – 1.25 | V                    |
| Differential input impedance                  | Chopping off             |   | 1000                              |             | MΩ                   |
|   | Chopping on              |   | 100                               |             |                      |
| Common-mode input impedance                   | Chopping off             |   | 100                               |             | MΩ                   |
|   | Chopping on              |   | 1                                 |             |                      |
| Input bias current                            | Chopping off             |   | 0.1                               |             | nA                   |
|   | Chopping on              |   | 1                                 |             |                      |
| Crosstalk                                     |                          |   | –125                              |             | dB                   |
| MUX on-resistance                             |                          |   | 30                                |             | Ω                    |
| <b>PGA OUTPUT (CAPP, CAPN)</b>                |                          |   |                                   |             |                      |
| PGA differential output impedance             |                          |   | 600                               |             | Ω                    |
| Output impedance tolerance                    |                          |   | ±10                               |             | %                    |
| External bypass capacitance                   |                          |   | 10                                |             | nF                   |
| Modulator differential input impedance        |                          |   | 55                                |             | kΩ                   |
| <b>AC PERFORMANCE</b>                         |                          |   |                                   |             |                      |
| Signal-to-noise ratio <sup>(2)</sup>          | (SNR)                    | High-resolution mode                          | TBD                               | 124         | dB                   |
|   |                          | Low-power mode                                | TBD                               | 121         |                      |
| Total harmonic distortion                     | (THD)                    | $V_{IN} = 31.25\text{Hz}$ , –0.5dBFS, PGA = 8 |                                   |             | dB                   |
|   |                          | High-resolution mode                          | –120                              | TBD         |                      |
|   |                          | Low-power mode                                | –117                              | TBD         |                      |
| Spurious-free dynamic range                   | (SFDR)                   |   | –122                              |             | dB                   |
| <b>DC PERFORMANCE</b>                         |                          |   |                                   |             |                      |
| Resolution                                    |                          | No missing codes                              | 31                                |             | Bits                 |
| Data rate                                     | $(f_{DATA})$             | FIR filter mode                               | 250                               | 4000        | SPS                  |
|   |                          | Sinc filter mode                              | 8000                              | 128,000     | SPS                  |
| Integral nonlinearity (INL) <sup>(3)</sup>    |                          | Differential input                            |                                   | 0.00008     | % FSR <sup>(4)</sup> |
| Offset error                                  |                          | Shorted input                                 |                                   | 100         | μV                   |
| Offset error after calibration <sup>(5)</sup> |                          |   |                                   | 1           | μV                   |
| Offset drift                                  |                          |   |                                   | 0.2         | μV/°C                |
| Gain error <sup>(6)</sup>                     |                          |   | TBD                               | –1          | %                    |
| Gain error after calibration <sup>(5)</sup>   |                          |   |                                   | 0.0002      | %                    |
| Gain drift                                    |                          |   |                                   | 1           | ppm/°C               |
| Gain matching                                 |                          |   |                                   | 0.5         | %                    |
| Common-mode rejection                         |                          | $f_{CM} = 60\text{Hz}^{(7)}$                  | TBD                               | 110         | dB                   |
| Power-supply rejection                        | AVDD, AVSS               | $f_{PS} = 60\text{Hz}^{(7)}$                  | TBD                               | 95          | dB                   |
|   | DVDD                     |   | TBD                               | 105         |                      |

(1)  $f_{CLK}$  = system clock.

(2)  $V_{IN} = 20\text{mV}_{DC}/\text{Gain}$ , see Table 1.

(3) Best-fit method.

(4) FSR: Full-scale range =  $\pm V_{REF}/2 \times \text{PGA}$ .

(5) Calibration accuracy is on the level of noise reduced by 4 (calibration averages 16 readings).

(6) The PGA output impedance and the modulator input impedance results in –1% systematic gain error.

(7)  $f_{CM}$  is the input common-mode frequency.  $f_{PS}$  is the power-supply frequency.

**ELECTRICAL CHARACTERISTICS (continued)**

Limit specifications at –40°C to +85°C. Typical specifications at +25°C, AVDD = +2.5V, AVSS = –2.5V, f<sub>CLK</sub> = 4.096MHz, VREFP = +2.5V, VREFN = –2.5V, DVDD = +3.3V, Chopping on, PGA = 1, High-Resolution Mode, and f<sub>DATA</sub> = 1000SPS, unless otherwise noted.

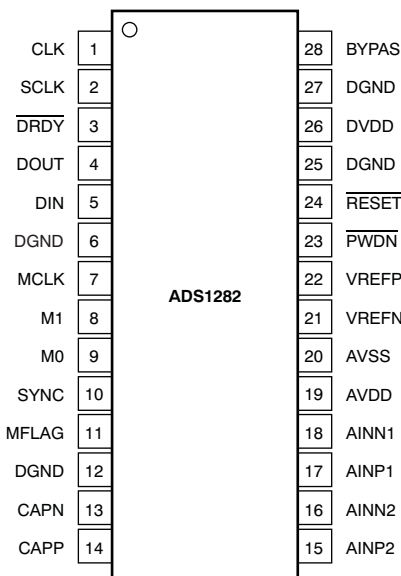
| PARAMETER                            | CONDITIONS                         | ADS1282     |                           |                     | UNIT |
|--------------------------------------|------------------------------------|-------------|---------------------------|---------------------|------|
|                                      |                                    | MIN         | TYP                       | MAX                 |      |
| <b>DIGITAL FILTER RESPONSE</b>       |                                    |             |                           |                     |      |
| Passband ripple                      |                                    |             |                           | ±0.003              | dB   |
| Passband (–0.01dB)                   |                                    |             | 0.375 × f <sub>DATA</sub> |                     | Hz   |
| Bandwidth (–3dB)                     |                                    |             | 0.413 × f <sub>DATA</sub> |                     | Hz   |
| High-pass filter corner              |                                    | 0.1         |                           | 10                  | Hz   |
| Stop band attenuation <sup>(8)</sup> |                                    | 135         |                           |                     | dB   |
| Stop band                            |                                    |             | 0.500 × f <sub>DATA</sub> |                     | Hz   |
| Group delay                          | Minimum phase filter               |             | 5/f <sub>DATA</sub>       |                     | s    |
|                                      | Linear phase filter                |             | 31/f <sub>DATA</sub>      |                     |      |
| Settling time (latency)              | Minimum phase filter               |             | 10/f <sub>DATA</sub>      |                     | s    |
|                                      | Linear phase filter                |             | 62/f <sub>DATA</sub>      |                     |      |
| <b>VOLTAGE REFERENCE INPUTS</b>      |                                    |             |                           |                     |      |
| Reference input voltage              | (V <sub>REF</sub> = VREFP – VREFN) | 0.5         | 5                         | (AVDD – AVSS) + 0.2 | V    |
| Negative reference input             | (VREFN)                            | AVSS – 0.1  |                           | VREFP – 0.5         | V    |
| Positive reference input             | (VREFP)                            | VREFN + 0.5 |                           | AVDD + 0.1          | V    |
| Reference input impedance            |                                    |             | 85                        |                     | kΩ   |
| <b>DIGITAL INPUT/OUTPUT</b>          |                                    |             |                           |                     |      |
| V <sub>IH</sub>                      |                                    | 0.8 × DVDD  |                           | DVDD                | V    |
| V <sub>IL</sub>                      |                                    | DGND        |                           | 0.2 × DVDD          | V    |
| V <sub>OH</sub>                      | I <sub>OH</sub> = 1mA              | 0.8 × DVDD  |                           |                     | V    |
| V <sub>OL</sub>                      | I <sub>OL</sub> = 1mA              |             |                           | 0.2 × DVDD          | V    |
| Input leakage                        | 0 < V <sub>DIGITAL IN</sub> < DVDD |             |                           | ±10                 | μA   |
| Clock input                          | (f <sub>CLK</sub> )                | 1           |                           | 4.096               | MHz  |
| Serial clock rate                    | (f <sub>SCLK</sub> )               |             |                           | f <sub>CLK</sub> /2 | MHz  |
| <b>POWER SUPPLY</b>                  |                                    |             |                           |                     |      |
| AVSS                                 |                                    | –2.6        |                           | 0                   | V    |
| AVDD                                 |                                    | AVSS + 4.75 |                           | AVSS + 5.25         | V    |
| DVDD                                 |                                    | 1.65        |                           | 3.6                 | V    |
| AVDD, AVSS current                   | High-resolution mode               |             | 4.5                       | TBD                 | mA   |
|                                      | Low-power mode                     |             | 3                         | TBD                 | mA   |
|                                      | Standby mode                       |             | 20                        | TBD                 | μA   |
|                                      | Power-down mode                    |             | 2                         | TBD                 | μA   |
| DVDD current                         | All modes                          |             | 0.6                       | TBD                 | mA   |
|                                      | Modulator mode                     |             | 0.1                       |                     | mA   |
|                                      | Standby mode                       |             | 2                         | TBD                 | μA   |
|                                      | Power-down mode <sup>(9)</sup>     |             | 2                         | TBD                 | μA   |
| Power dissipation                    | High-resolution mode               |             | 27                        |                     | mW   |
|                                      | Low-power mode                     |             | 16                        |                     | mW   |
|                                      | Standby mode                       |             | 125                       |                     | μW   |
|                                      | Power-down mode                    |             | 20                        |                     | μW   |

(8) Input frequencies in the range of Nf<sub>CLK</sub>/512 ± f<sub>DATA</sub>/2 (N = 1, 2, 3...) can mix with the modulator chopping clock. In these frequency ranges intermodulation = 120dB, typ.

(9) CLK input stopped.

**DEVICE INFORMATION**

**TSSOP-28**  
**Top View**

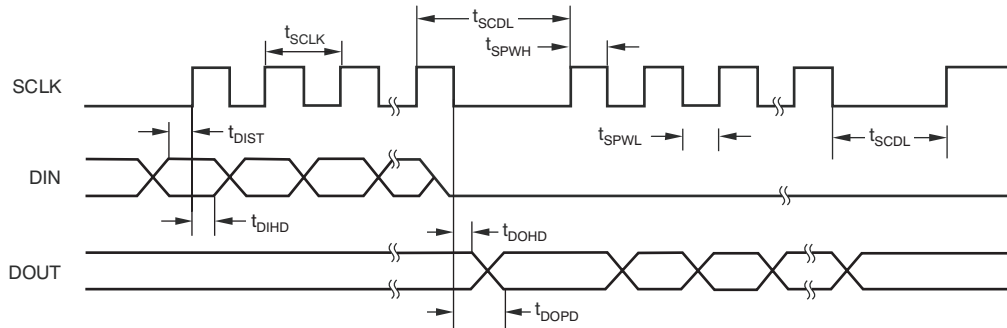


**TERMINAL FUNCTIONS**

| NAME                      | NO.           | FUNCTION         | DESCRIPTION   |
|---------------------------|---------------|------------------|---|
| CLK                       | 1             | Digital input    | Master clock input  |
| SCLK                      | 2             | Digital input    | Serial clock input  |
| $\overline{\text{DRDY}}$  | 3             | Digital output   | Data ready output: read data on falling edge  |
| DOUT                      | 4             | Digital output   | Serial data output  |
| DIN                       | 5             | Digital input    | Serial data input   |
| MCLK                      | 7             | Digital I/O      | Modulator clock output; if in modulator mode: MCLK: Modulator clock output<br>Otherwise, the pin is an unused input (must be tied). |
| M1                        | 8             | Digital I/O      | Modulator data output 1; if in modulator mode: M1: Modulator data output 1<br>Otherwise, the pin is an unused input (must be tied). |
| M0                        | 9             | Digital I/O      | Modulator data output 0; if in modulator mode: M0: Modulator data output 0<br>Otherwise, the pin is an unused input (must be tied). |
| SYNC                      | 10            | Digital input    | Synchronize input   |
| MFLAG                     | 11            | Digital output   | Modulator Over-Range flag: 0 = normal, 1 = modulator over-range   |
| DGND                      | 6, 12, 25, 27 | Digital ground   | Digital ground, pin 12 is the key ground point  |
| CAPN                      | 13            | Filter capacitor | Filter capacitor: 10nF, COG capacitor to CAPP   |
| CAPP                      | 14            | Filter capacitor | Filter capacitor: 10nF, COG capacitor to CAPN   |
| AINP2                     | 15            | Analog input     | Positive analog input 2   |
| AINN2                     | 16            | Analog input     | Negative analog input 2   |
| AINP1                     | 17            | Analog input     | Positive analog input 1   |
| AINN1                     | 18            | Analog input     | Negative analog input 1   |
| AVDD                      | 19            | Analog supply    | Positive analog power supply  |
| AVSS                      | 20            | Analog supply    | Negative analog power supply  |
| VREFN                     | 21            | Analog input     | Negative reference input  |
| VREFP                     | 22            | Analog input     | Positive reference input  |
| $\overline{\text{PWDN}}$  | 23            | Digital input    | Power-down input, active low  |
| $\overline{\text{RESET}}$ | 24            | Digital input    | Reset input   |
| DVDD                      | 26            | Digital supply   | Digital power supply: +1.8V to +3.3V  |
| BYPAS                     | 28            | Capacitor bypass | Digital core voltage; 1 $\mu$ F bypass capacitor to GND   |

PRODUCT PREVIEW

**TIMING DIAGRAM**



**TIMING REQUIREMENTS**

At  $T_A = -40^{\circ}\text{C}$  to  $+85^{\circ}\text{C}$  and  $DVDD = 1.65\text{V}$  to  $3.6\text{V}$ , unless otherwise noted.

| PARAMETER     | DESCRIPTION  | MIN | MAX | UNITS       |
|---------------|--|-----|-----|-------------|
| $t_{SCLK}$    | SCLK period  | 2   | 16  | $1/f_{CLK}$ |
| $t_{SPWH, L}$ | SCLK pulse width, high and low <sup>(1)</sup>  | 0.8 | 10  | $1/f_{CLK}$ |
| $t_{DIST}$    | DIN valid to SCLK rising edge: setup time  | 50  |     | ns          |
| $t_{DIHD}$    | Valid DIN to SCLK rising edge: hold time   | 50  |     | ns          |
| $t_{DOPD}$    | SCLK falling edge to valid new DOUT: propagation delay <sup>(2)</sup>  |     | 100 | ns          |
| $t_{DOHD}$    | SCLK falling edge to DOUT invalid: hold time   | 0   |     | ns          |
| $t_{SCDL}$    | Final SCLK rising edge of command to first SCLK rising edge for register read/write data. (Also between consecutive commands.) | 24  |     | $1/f_{CLK}$ |

- (1) Holding SCLK low for 64  $\overline{DRDY}$  falling edges resets the serial interface.
- (2) Load on DOUT =  $20\text{pF} \parallel 100\text{k}\Omega$ .

## OVERVIEW

The ADS1282 is a high-performance analog-to-digital converter (ADC) intended for energy exploration, seismic monitoring, chromatography, and other exacting applications. The converter provides 24- or 32-bit output data in data rates from 4000SPS to 250SPS.

Figure 1 shows the block diagram of the ADS1282. The device features unipolar and bipolar analog power supplies (AVDD and AVSS, respectively) for input range flexibility and a digital supply accepting 1.8V to 3.3V. The analog supplies may be set to +5V to accept unipolar signals (with input offset) or set lower in the range of  $\pm 2.5V$  to accept true bipolar input signals (ground referenced).

An internal low dropout (LDO) regulator is used to supply the digital core from DVDD. The BYPASS pin is the LDO output and requires a 0.1 $\mu F$  capacitor for noise reduction (BYPASS should not be used to drive external circuitry).

The 2-channel input MUX allows five configurations: Input 1; Input 2; Input 1 and Input 2 shorted together; shorted with 400 $\Omega$  test; and common-mode test. The input MUX is followed by a continuous time PGA, featuring very low noise of 4nV/ $\sqrt{Hz}$ . The PGA is controlled by register settings, allowing gains of 1 to 64.

The inherently-stable, fourth-order, delta-sigma modulator measures the differential input signal  $V_{IN} = (AINP - AINN)$  against the differential reference  $V_{REF} = (VREFP - VREFN)$ . A digital output (MFLAG) indicates that the modulator is in overload resulting from an overdrive condition. The modulator output is available directly on the MCLK, M0, and M1 output pins. The modulator connects to an on-chip digital filter that provides the output code readings.

The digital filter is comprised of a variable decimation rate, fifth-order sinc filter followed by a variable phase, decimate-by-32, finite impulse response (FIR) low-pass filter with programmable phase, and then by an adjustable high-pass filter for dc removal of the output reading. The output of the digital filter can be taken from the sinc, the FIR low-pass, or the infinite impulse response (IIR) high-pass sections.

Gain and offset registers scale the digital filter output to produce the final code value. The scaling feature can be used for calibration and sensor gain matching. The output data word is provided as either a 24-bit word or a full 32-bit word, allowing complete utilization of the inherently high resolution.

The SYNC input resets the operation of both the digital filter and the modulator, allowing synchronization conversions of multiple ADS1282 devices to an external event. The SYNC input supports a continuously-toggled input mode that accepts an external data frame clock locked to the conversion rate.

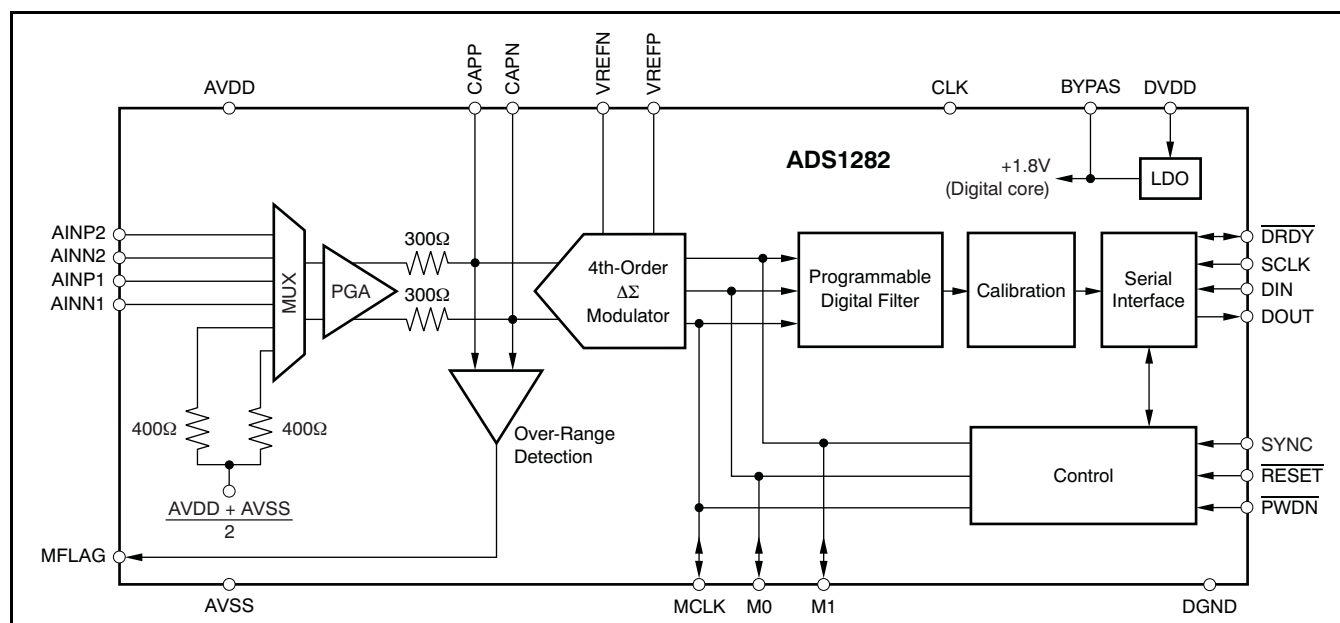


Figure 1. ADS1282 Block Diagram

PRODUCT PREVIEW

The  $\overline{\text{RESET}}$  input resets the register settings and also restarts the conversion process. The  $\overline{\text{PWDN}}$  input sets the device into a micro-power state. Note that register settings are not retained in  $\overline{\text{PWDN}}$  mode. Use the  $\overline{\text{STANDBY}}$  command in its place if it is desired to retain register settings (the quiescent current in the Standby mode is slightly higher).

Noise-immune Schmitt-trigger and clock-qualified inputs ( $\overline{\text{RESET}}$  and  $\overline{\text{SYNC}}$ ) provide increased reliability in high-noise environments. The serial interface is used to read conversion data, in addition to reading and writing to the configuration registers.

**NOISE PERFORMANCE**

The ADS1282 offers outstanding noise performance (SNR). SNR depends on the data rate and the PGA setting. As the bandwidth is decreased by decreasing the data rate, the SNR improves correspondingly. Table 1 summarizes the typical noise performance with inputs shorted.

**IDLE TONES**

The ADS1281 modulator incorporates an internal dither signal that randomizes the idle tone energy. Low-level idle tones may still be present, typically  $-137\text{dB}$  below full-scale. The low-level idle tones can be shifted out of the passband with the application of an external  $20\text{mV}$  offset.

**OPERATING MODE**

For applications where minimal power consumption is important, the low-power mode can be selected (register bit  $\text{MODE} = 0$ ). In low-power mode, the power is reduced from  $27\text{mW}$  to  $17\text{mW}$  and SNR degrades by  $3\text{dB}$ .

**ANALOG INPUTS AND MULTIPLEXER**

A diagram of the input multiplexer is shown in Figure 2. The specified input operating range of the inputs are shown in Equation 1:

$$\text{AVSS} - 0.7\text{V} < (\text{AINN or AINP}) < \text{AVDD} - 1.25\text{V} \quad (1)$$

ESD diodes protect the multiplexer inputs. If either input is taken below  $\text{AVSS} - 0.3\text{V}$  or above  $\text{AVSS} + 0.3\text{V}$ , the ESD protection diodes may turn on. If these conditions are possible, external Schottky clamp diodes and/or series resistors may be required to limit the input current to safe values (see the Absolute Maximum Ratings table).

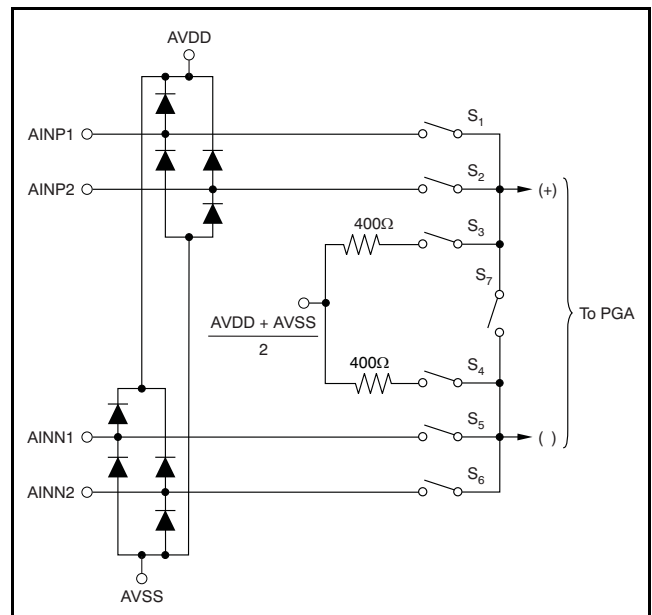


Figure 2. Analog Inputs and Multiplexer

Table 1. Noise Performance (Typical<sup>(1)</sup>)

| DATA RATE (SPS) | PGA (High-Resolution Mode) |     |     |     |     |     |     | PGA (Low-Power Mode) |     |     |     |     |     |     |
|-----------------|----------------------------|-----|-----|-----|-----|-----|-----|----------------------|-----|-----|-----|-----|-----|-----|
|                 | 1                          | 2   | 4   | 8   | 16  | 32  | 64  | 1                    | 2   | 4   | 8   | 16  | 32  | 64  |
| 250             | 130                        | 130 | 129 | 128 | 125 | 119 | 114 | 127                  | 127 | 126 | 125 | 122 | 116 | 111 |
| 500             | 127                        | 127 | 126 | 125 | 122 | 116 | 111 | 124                  | 124 | 123 | 122 | 119 | 113 | 108 |
| 1000            | 124                        | 124 | 123 | 122 | 119 | 113 | 108 | 121                  | 121 | 120 | 119 | 116 | 110 | 105 |
| 2000            | 121                        | 121 | 120 | 119 | 116 | 111 | 106 | 118                  | 118 | 117 | 116 | 113 | 108 | 103 |
| 4000            | 118                        | 118 | 117 | 116 | 113 | 108 | 103 | 115                  | 115 | 114 | 113 | 110 | 105 | 100 |

(1)  $V_{\text{IN}} = 20\text{mV}_{\text{DC}}$ .



Also, overdriving either multiplexer input may affect the conversions of the other channel. If overdriven outputs are possible, it is recommended to clamp the signal with external Schottky diodes.

The multiplexer connects one of the two external differential inputs to the preamplifier inputs. The multiplexer offers additional connections for various self-test modes. [Table 3](#) summarizes the multiplexer configurations for [Figure 2](#).

The typical on-resistance ( $R_{ON}$ ) of the multiplexer switch is 30Ω. When using the multiplexer with the two inputs shorted together, the on-resistance and on-resistance variations versus input level can lead to measurement errors and additional nonlinearity, as shown in [Figure 3](#).



**Figure 3. Multiplexer  $R_{ON}$  versus Input Signal Level**

### PGA (Programmable Gain Amplifier)

The PGA is a low-noise, continuous-time, differential-in/differential-out CMOS amplifier. The gain is programmable from 1 to 64 by register bits, PGA[2:0]. The PGA differentially drives the modulator through 300Ω isolation resistors. A 10nF COG capacitor must be connected to CAPP and CAPN to filter high-frequency noise from aliasing.

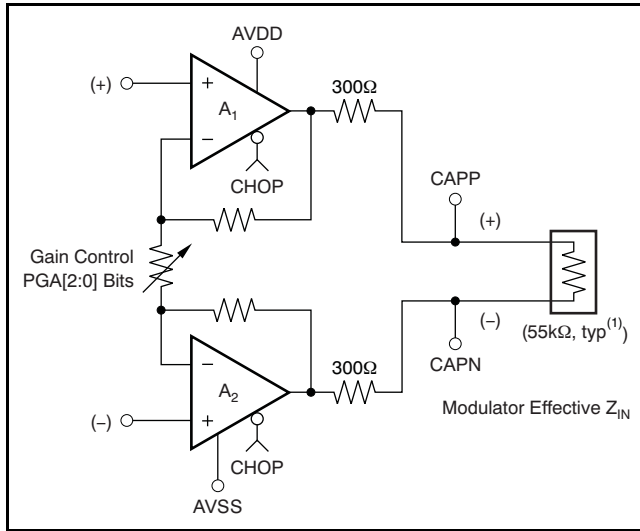
Referring to [Figure 4](#), amplifiers  $A_1$  and  $A_2$  are chopped to remove the 1/f input noise. The chopping frequency is  $f_{CLK}/512$  (nominal 8kHz). As shown in [Figure 5](#), chopping provides a flat noise profile within the passband. However, chopping lowers the input impedance of the PGA (see the [Electrical Characteristics](#)). Chopping is disabled by setting the CHOP register bit to '0'. [Table 2](#) shows the register bit settings that control the gain and corresponding input range.

**Table 2. PGA Gain Settings**

| PGA[2:0] | GAIN | DIFFERENTIAL INPUT RANGE |
|----------|------|--------------------------|
| 000      | 1    | ±2.5V                    |
| 001      | 2    | ±1.25V                   |
| 010      | 4    | ±625mV                   |
| 011      | 8    | ±312mV                   |
| 100      | 16   | ±156mV                   |
| 101      | 32   | ±78mV                    |
| 110      | 64   | ±39mV                    |

**Table 3. Multiplexer Modes**

| REGISTER BITS MUX[2:0] | CLOSED SWITCHES      | DESCRIPTION  |
|------------------------|----------------------|--|
| 000                    | $S_1, S_5$           | AINP1 and AINN1 connected to preamplifier  |
| 001                    | $S_2, S_6$           | AINP2 and AINN2 connected to preamplifier  |
| 010                    | $S_3, S_4$           | Internal short, preamplifier inputs shorted together through 400Ω internal resistors |
| 011                    | $S_1, S_5, S_2, S_6$ | AINP1, AINN1 and AINP2, AINN2 connected together and to the preamplifier             |
| 100                    | $S_6, S_7$           | External short, preamplifier inputs shorted to AINN2 (common-mode test)              |



(1) See the [Modulator Input Impedance](#) section.

Figure 4. PGA Block Diagram

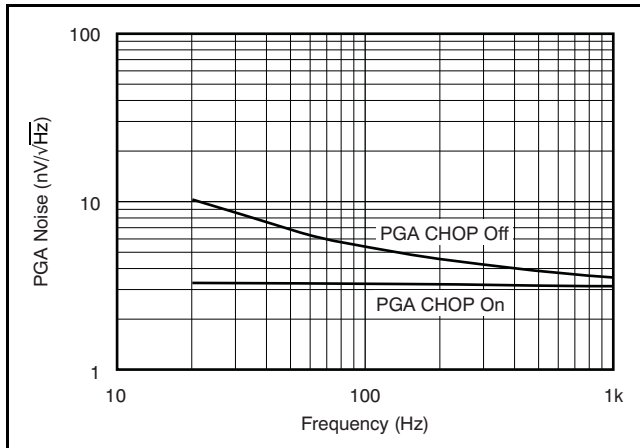


Figure 5. PGA Noise

## ADC

The ADC block of the ADS1282 is composed of two blocks: a high-accuracy modulator and a programmable digital filter.

## MODULATOR

The high-performance modulator is an inherently-stable, fourth-order,  $\Delta\Sigma$ , 2 + 2 pipelined structure, as shown in Figure 6. It shifts the quantization noise to a higher frequency (out of the passband) where digital filtering can easily remove it. The modulator can be filtered either by the on-chip digital filter or by use of post-processing filters.

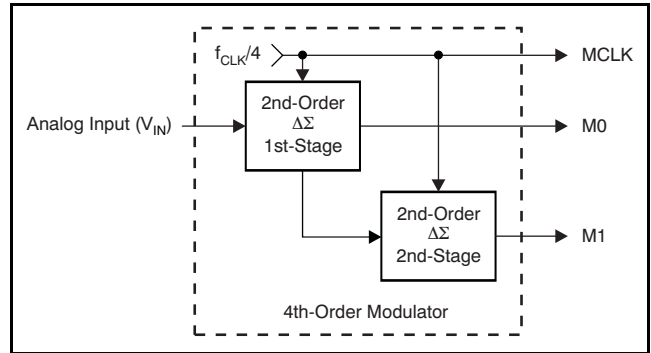


Figure 6. Fourth-Order Modulator

The modulator first stage converts the analog input voltage into a pulse-code modulated (PCM) stream. When the level of differential analog input ( $A_{INP} - A_{INN}$ ) is near one-half the level of the reference voltage  $1/2 \times (V_{REFP} - V_{REFN})$ , the '1' density of the PCM data stream is at its highest. When the level of the differential analog input is near zero, the PCM '0' and '1' densities are nearly equal. At the two extremes of the analog input levels (+FS and -FS), the '1' density of the PCM streams are approximately +90% and +10%, respectively.

The modulator second stage produces a '1' density data stream designed to cancel the quantization noise of the first stage. The data streams of the two stages are then combined before input to the digital filter stage, as shown in Equation 2.

$$Y[n] = 3M0[n - 2] - 6M0[n - 3] + 4M0[n - 4] + 9(M1[n] - 2M1[n - 1] + M1[n - 2]) \quad (2)$$

$M0[n]$  represents the most recent first-stage output while  $M0[n - 1]$  is the previous first-stage output. When the modulator output is enabled, the digital filter shuts down to save power.

The modulator is optimized for input signals within a 4kHz passband. As Figure 7 shows, the noise shaping of the modulator results in a sharp increase in noise above 6kHz. The modulator has a chopped input structure that further reduces noise within the passband. The noise is moved out of the passband and appears at the chopping frequency ( $f_{CLK}/512 = 8\text{kHz}$ ). The component at 6.5kHz is the tone frequency, shifted out of band by a 20mV external input. The frequency of the tone is approximately  $V_{IN}/3$  (in kHz).

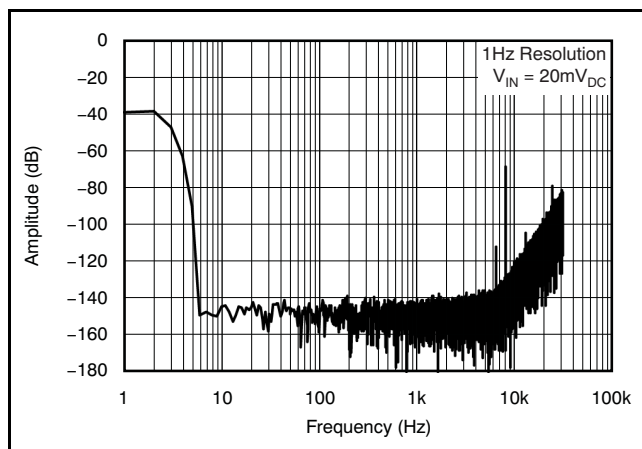


Figure 7. Modulator Output Spectrum

## MODULATOR OVER-RANGE

The ADS1282 modulator is inherently stable, and therefore, has predictable recovery behavior that results from an input overdrive condition. The modulator does not exhibit self-resetting behavior, which often results in an unstable output data stream.

The ADS1282 modulator outputs a 1s density data stream at 90% duty cycle with the positive full-scale input signal applied (10% duty cycle with the negative full-scale signal). If the input is overdriven past 90% modulation, but below 100% modulation (10% and 0% for negative overdrive, respectively), the modulator remains stable and continues to output the 1s density data stream. The digital filter may or may not clip the output codes to +FS or –FS, depending on the duration of the overdrive. When the input returns to the normal range from a long duration overdrive (worst case), the modulator returns immediately to the normal range, but the group delay of the digital filter delays the return of the conversion result to within the linear range (31 readings for linear phase FIR). 31 additional readings (62 total) are required for completely settled data.

If the inputs are sufficiently overdriven to drive the modulator to full duty cycle (that is, all 1s, all 0s, or  $\pm 110\%$ FSR), the modulator enters a stable saturated state. The digital output code may clip to +FS or –FS, again depending on the duration. A small duration overdrive may not always clip the output code. When the input returns to the normal range, the modulator requires up to 12 modulator clock cycles ( $f_{MOD}$ ) to exit saturation and return to the linear region. The digital filter requires an additional 62 conversions for fully settled data (linear phase FIR).

In the extreme case of over-range, either input is overdriven exceeding that either analog supply voltage plus an internal ESD diode drop. The internal ESD diodes begin to conduct and the signal on the input is clipped. If the differential input signal range is not exceeded, the modulator remains in linear operation. If the differential input signal range is exceeded, the modulator is saturated but stable, and outputs all 1s or 0s. When the input overdrive is removed, the diodes recovery quickly and the ADS1282 recovers as normal. Note that the linear input range is  $\pm 100\text{mV}$  beyond the analog supply voltages; with input levels above this, use care to limit the input current to 100mA peak transient and 10mA continuous.

## MODULATOR INPUT IMPEDANCE

The modulator samples the buffered input voltage with an internal capacitor to perform conversions. The charging of the input sampling capacitor draws a transient current from the PGA output. The average value of the current can be used to calculate an effective input impedance of  $R_{EFF} = 1/(f_{MOD} \times C_S)$ .

Where:

$f_{MOD}$  = Modulator sample frequency (CLK/4)

$C_S$  = Input sampling capacitor (22pF, typ)

The resulting modulator input impedance for CLK = 4.096MHz is 55k $\Omega$ . Note that the modulator input impedance and the PGA output anti-alias resistors result in a systematic gain error of –1%.  $C_S$  can vary  $\pm 20\%$  or more over production lots, affecting the gain error.

## MODULATOR OVER-RANGE DETECTION (MFLAG)

The ADS1282 has a fast-responding over-range detection, indicating when the differential input exceeds approximately 100% over-range. The threshold tolerance is  $\pm 2.5\%$ . The MFLAG output asserts high when in an over-range condition. As

Figure 8 and Figure 9 illustrate, the absolute value of the input is compared to 100% of range. The output of the comparator is sampled at the rate of  $f_{MOD}/2$ , yielding the MFLAG output. The minimum MFLAG pulse width is  $f_{MOD}/2$ .

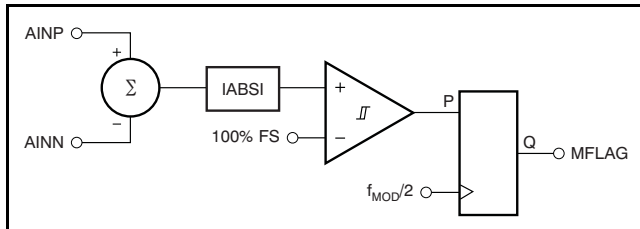


Figure 8. Modulator Over-Range Block Diagram

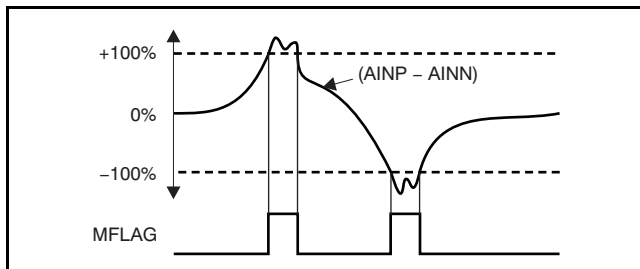


Figure 9. Modulator Over-Range Flag Operation

### MODULATOR OUTPUT MODE

The modulator digital stream output is available directly, bypassing and disabling the internal digital filter. The modulator output mode is activated in the Pin mode by setting  $MOD/DIN = 1$ , and in Register mode by setting the CONFIG0 register bits  $FILTR[1:0] = 00$ . Pins DR0/M0 and DR1/M1 then become the modulator data outputs and the PHS/MCLK becomes the modulator clock output. When not in the modulator mode, these pins are inputs and must not float.

The modulator output is composed of three signals: one output for the modulator clock (PHS/MCLK) and two outputs for the modulator data (DR0/M0 and DR1/M1). The modulator clock output rate is  $f_{MOD}$  ( $f_{CLK}/4$ ). The SYNC input resets the MODCLK phase, as shown in Figure 10. The SYNC input is latched on the rising edge of CLK. The MODCLK resets and the next rising edge of MODCLK occurs five CLK periods later.

The modulator output data are two bits wide, which must be merged together before being filtered. Use the time domain equation of Equation 2 to merge the data outputs.

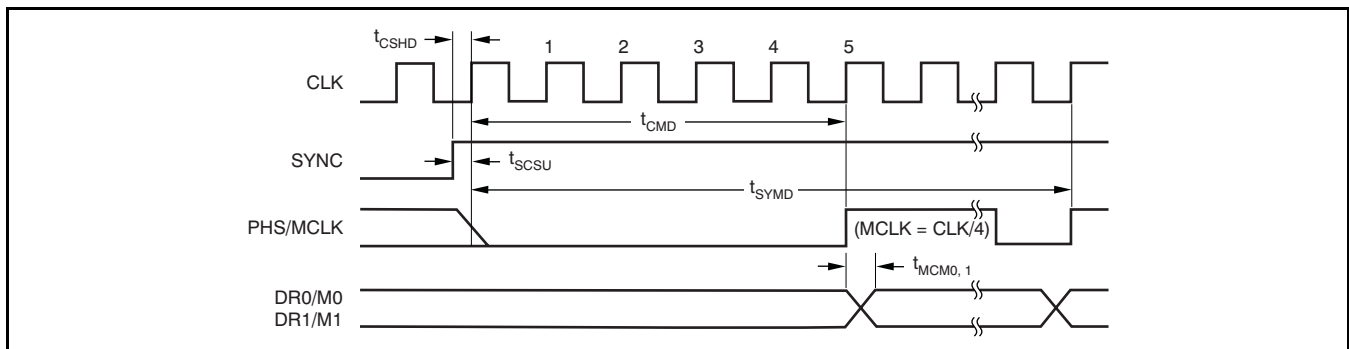


Figure 10. Modulator Mode Timing

#### Modulator Output Timing for Figure 10

| PARAMETER     | DESCRIPTION   | MIN | TYP | MAX | UNIT        |
|---------------|---|-----|-----|-----|-------------|
| $t_{MCD0, 1}$ | MODCLK rising edge to M0, M1 valid propagation delay <sup>(1)</sup>       |     |     | 100 | ns          |
| $t_{CMD}$     | CLK rising edge (after SYNC rising edge) to MODCLK rising edge reset time |     | 5   |     | $1/f_{CLK}$ |
| $t_{CSHD}$    | CLK to SYNC hold time to not latch on CLK edge                            | 10  |     |     | ns          |
| $t_{SCSU}$    | SYNC to CLK setup time to latch on CLK edge                               | 10  |     |     | ns          |
| $t_{SYMD}$    | SYNC to stable bit stream   |     |     | 16  | $1/f_{MOD}$ |

(1) Load on M0 and M1 = 20pF || 100kΩ.

## DIGITAL FILTER

The digital filter receives the modulator output and decimates the data stream. By adjusting the amount of filtering, tradeoffs can be made between resolution and data rate: filter more for higher resolution, filter less for higher data rate.

The digital filter is comprised of three cascaded filter stages: a variable-decimation, fifth-order sinc filter; a fixed-decimation FIR, low-pass filter (LPF) with selectable phase; and a programmable, first-order, high-pass filter (HPF), as shown in Figure 11.

The output can be taken from one of the three filter blocks, as Figure 11 shows. To implement the digital filter completely off-chip, select the filter bypass setting (modulator output). For partial filtering by the ADS1282, select the sinc filter output. For complete on-chip filtering, activate both the sinc and FIR stages. The HPF can then be included to remove dc and low frequencies from the data. Table 4 shows the filter options in Register mode. Table 5 shows the filter options in Pin mode.

**Table 4. Digital Filter Selection, Register Mode**

| FILTR[1:0] BITS | DIGITAL FILTERS SELECTED                     |
|-----------------|--|
| 00              | Bypass; modulator output mode                |
| 01              | Sinc   |
| 10              | Sinc + FIR                                   |
| 11              | Sinc + FIR + HPF<br>(low-pass and high-pass) |

**Table 5. Digital Filter Selection, Pin Mode**

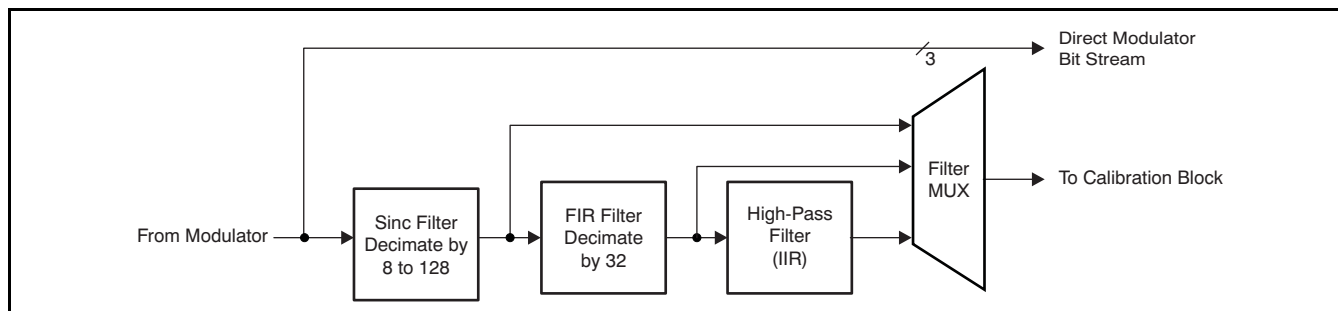
| MOD/DIN PIN | HPF/SYNC PIN | DIGITAL FILTERS SELECTED                     |
|-------------|--------------|--|
| 1           | X            | Bypass; modulator output mode                |
| 0           | 0            | Sinc + FIR                                   |
| 0           | 1            | Sinc + FIR + HPF<br>(low-pass and high-pass) |

### Sinc Filter Stage (sinx/x)

The sinc filter is a variable decimation rate, fifth-order, low-pass filter. Data are supplied to this section of the filter from the modulator at the rate of  $f_{MOD}$  ( $f_{CLK}/4$ ). The sinc filter attenuates the high-frequency noise of the modulator, then decimates the data stream into parallel data. The decimation rate affects the overall data rate of the converter; it is set by the DR[1:0] and MODE selections, as shown in Table 6.

Equation 3 shows the scaled Z-domain transfer function of the sinc filter.

$$H(Z) = \left[ \frac{1 - Z^N}{1 - Z^{-1}} \right]^5 \quad (3)$$



**Figure 11. Digital Filter**

**Table 6. Sinc Filter Data Rates (CLK = 4.096MHz)**

| DR[1:0] PINS | DR[2:0] REGISTER | DECIMATION RATIO (N) | SINC DATA RATE (SPS) |
|--------------|------------------|----------------------|----------------------|
| 00           | 000              | 128                  | 8,000                |
| 01           | 001              | 64                   | 16,000               |
| 10           | 010              | 32                   | 32,000               |
| 11           | 011              | 16                   | 64,000               |
| —            | 100              | 8                    | 128,000              |

Equation 4 shows the frequency domain transfer function of the sinc filter.

$$|H(f)| = \left[ \frac{\sin\left(\frac{2\pi R \times f}{f_{MOD}}\right)}{R \sin\left(\frac{2\pi \times f}{f_{MOD}}\right)} \right]^5 \tag{4}$$

where:

N = decimation ratio (see Table 6)

The sinc filter has notches (or zeroes) that occur at the output data rate and multiples thereof. At these frequencies, the filter has zero gain. Figure 12 shows the frequency response of the sinc filter and Figure 13 shows the roll-off of the sinc filter.

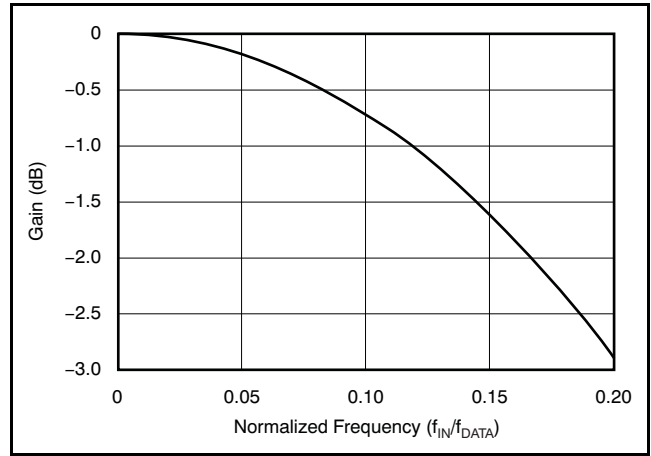


Figure 13. Sinc Filter Roll-Off

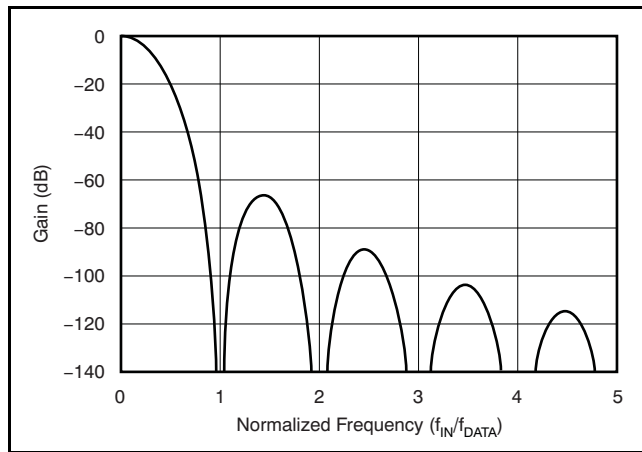


Figure 12. Sinc Filter Frequency Response

### FIR Stage

The second stage of the ADS1282 digital filter is an FIR low-pass filter. Data are supplied to this stage from the sinc filter. The FIR stage is segmented into four sub-stages, as shown in Figure 14. The first two sub-stages are half-band filters with decimation ratios of 2. The third sub-stage decimates by 4 and the fourth sub-stage decimates by 2. The overall decimation of the FIR stage is 32. Note that two coefficient sets are used for the third and fourth sections, depending on the phase selection. Table 23 (in the Appendix section at the end of this document) lists the FIR stage coefficients. Table 7 lists the data rates and overall decimation ratio of the FIR stage.

Table 7. FIR Filter Data Rates

| DR[1:0] PINS | DR[2:0] REGISTER | DECIMATION RATIO (N) | FIR DATA RATE (SPS) |
|--------------|------------------|----------------------|---------------------|
| 00           | 000              | 4096                 | 250                 |
| 01           | 001              | 2048                 | 500                 |
| 10           | 010              | 1024                 | 1000                |
| 11           | 011              | 512                  | 2000                |
| —            | 100              | 256                  | 4000                |

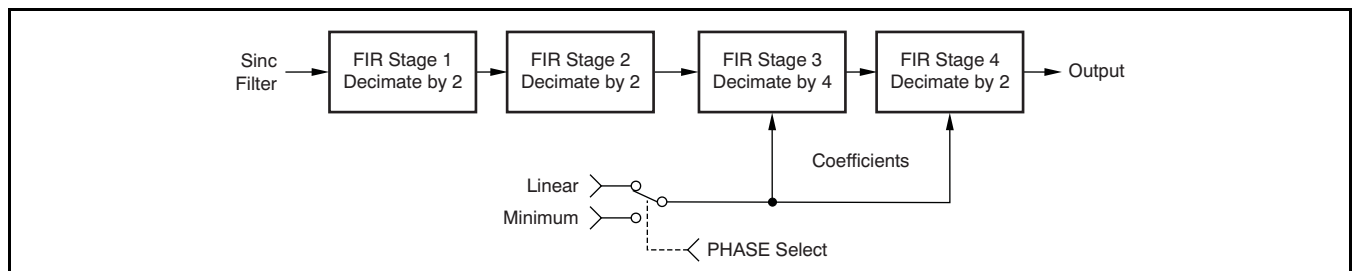
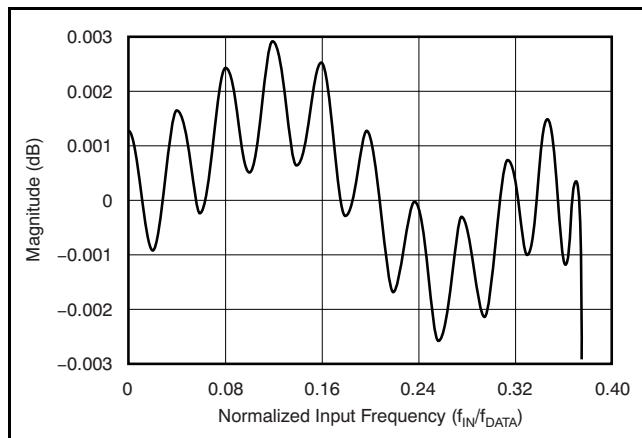
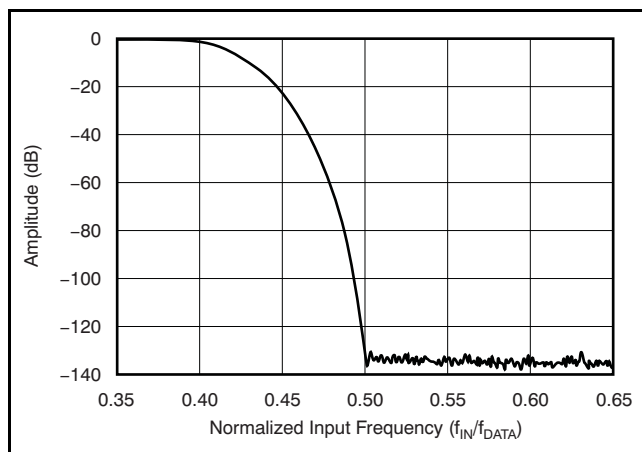


Figure 14. FIR Filter Sub-Stages

As shown in Figure 15, the FIR frequency response provides a flat passband to 0.375 of the data rate ( $\pm 0.003$ dB passband ripple). Figure 16 shows the transition from passband to stop band.



**Figure 15. FIR Passband Amplitude Response**  
( $f_{DATA} = 500$ Hz)



**Figure 16. FIR Transition Band Response**

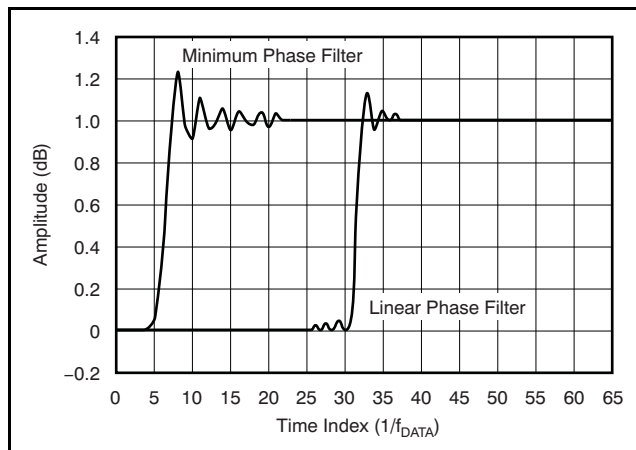
Although not shown in Figure 16, the passband response repeats at multiples of the modulator frequency ( $Nf_{MOD} - f_0$  and  $Nf_{MOD} + f_0$ , where  $N = 1, 2$ , etc. and  $f_0 =$  passband). These image frequencies, if present in the signal and not externally filtered, fold back (or alias) into the passband and cause errors. Placing an anti-alias, low-pass filter in front of the ADS1282 inputs is recommended to limit possible out-of-band input signals. Often, a single RC filter is sufficient.

## GROUP DELAY AND STEP RESPONSE

The FIR block is implemented as a multi-stage FIR structure with selectable linear or minimum phase response. The passband, transition band, and stop band responses of the filters are nearly identical but differ in the respective phase responses.

### Linear Phase Response

Linear phase filters exhibit constant delay time versus input frequency (that is, constant group delay). Linear phase filters have the property that the time delay from any instant of the input signal to the same instant of the output data is constant and is independent of the signal nature. This filter behavior results in essentially zero phase error when analyzing multi-tone signals. However, the group delay and settling time of the linear phase filter are somewhat larger than the minimum phase filter, as shown in Figure 17.



**Figure 17. FIR Step Response**

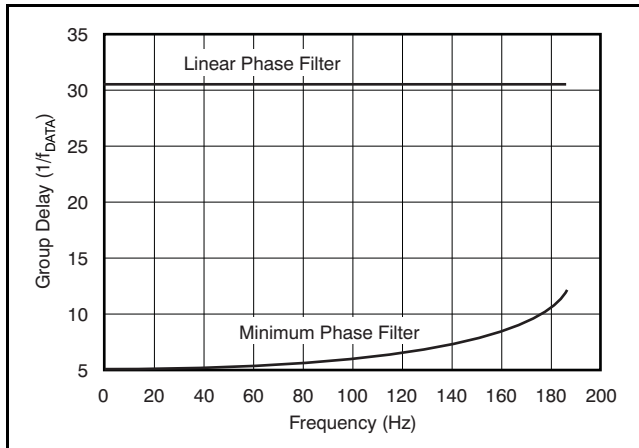


**Minimum Phase Response**

The minimum phase filter provides a short delay from the arrival of an input signal to the output, but the relationship (phase) is not constant versus frequency, as shown in Figure 18. The filter phase is selected by the PHS bit (Register mode) or the PHS/MCLK pin (Pin mode); Table 8 shows additional information.

**Table 8. FIR Phase Selection**

| PHS BIT or PHS/MCLK PIN | FILTER PHASE |
|-------------------------|--------------|
| 0                       | Linear       |
| 1                       | Minimum      |



**Figure 18. FIR Group Delay (f<sub>DATA</sub> = 500Hz)**

**HPF Stage**

The last stage of the ADS1282 filter block is a first-order HPF implemented as an IIR structure. This filter stage blocks dc signals and rolls off low-frequency components below the cut-off frequency. The transfer function for the filter is shown in Equation 5:

$$HPF(Z) = \frac{2 - a}{2} \times \frac{1 - Z^{-1}}{1 - bZ^{-1}} \tag{5}$$

where *b* is calculated as shown in Equation 6:

$$b = \frac{(1 + (1 - a)^2)^2}{2} \tag{6}$$

The high-pass corner frequency is programmed by registers HPF[1:0], in hexadecimal. Equation 7 is used to set the high-pass corner frequency. Table 9 lists example values for the high-pass filter.

$$HPF[1:0] = 65,536 \left[ 1 - \sqrt{1 - 2 \frac{\cos \omega_N + \sin \omega_N - 1}{\cos \omega_N}} \right] \tag{7}$$

Where:

HPF = High-pass filter register value (converted to hexadecimal)

$\omega_N = 2\pi f_{HP}/f_{DATA}$  (normalized frequency, radians)

*f*<sub>HP</sub> = High-pass corner frequency (Hz)

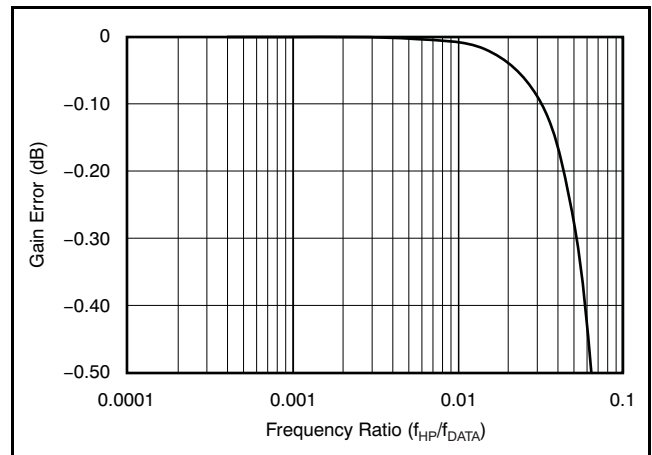
*f*<sub>DATA</sub> = Data rate (Hz)

**Table 9. High-Pass Filter Value Examples<sup>(1)</sup>**

| f <sub>HP</sub> (Hz) | DATA RATE (SPS) | HPF[1:0] |
|----------------------|-----------------|----------|
| 0.5                  | 250             | 0337h    |
| 1.0                  | 500             | 0337h    |
| 1.0                  | 1000            | 019Ah    |

(1) In Pin Control mode the HPF value is fixed at 0332h.

The HPF causes a small gain error, in which case the magnitude depends on the ratio of *f*<sub>HP</sub>/*f*<sub>DATA</sub>. For many common values of (*f*<sub>HP</sub>/*f*<sub>DATA</sub>), the gain error is negligible. Figure 19 shows the gain error of the HPF. The gain error factor is illustrated in Equation 13 (see the Appendix at the end of this document).



**Figure 19. HPF Gain Error**



Figure 20 shows the first-order amplitude and phase response of the HPF. Note that in the case of applying step inputs or synchronizing, the settling time of the filter should be taken into account.

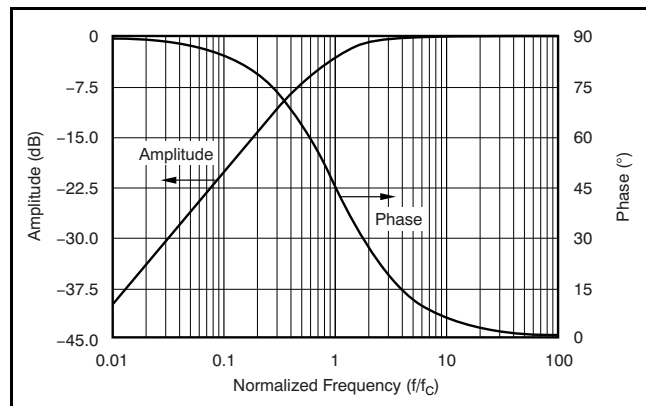


Figure 20. HPF Amplitude and Phase Response

### VOLTAGE REFERENCE INPUTS (VREFP, VREFN)

The voltage reference for the ADS1282 ADC is the differential voltage between VREFP and VREFN:  $V_{REF} = VREFP - VREFN$ . The reference inputs use a structure similar to that of the analog inputs with the circuitry on the reference inputs shown in Figure 21. The average load presented by the switched capacitor reference input can be modeled with an effective differential impedance of  $R_{EFF} = t_{SAMPLE}/C_{IN}$  ( $t_{SAMPLE} = 1/f_{MOD}$ ). Note that the effective impedance of the reference inputs loads an external reference with non-zero source impedance.

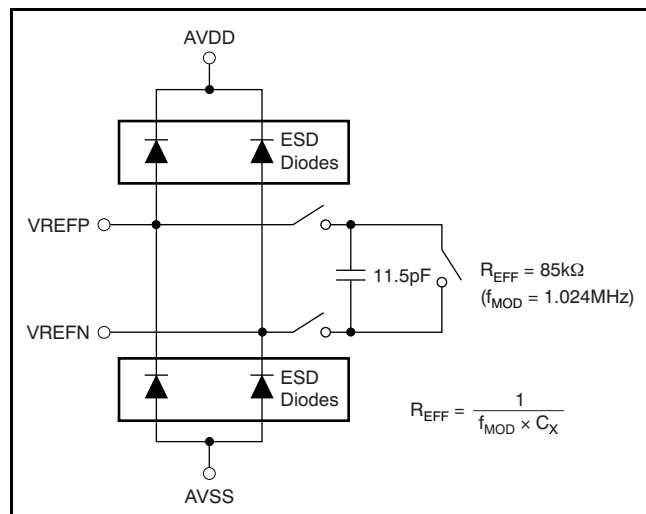


Figure 21. Simplified Reference Input Circuit

The ADS1282 reference inputs are protected by ESD diodes. In order to prevent these diodes from turning on, the voltage on either input must stay within the range shown in Equation 8:

$$AVSS - 300mV < (VREFP \text{ or } VREFN) < AVDD + 300mV \quad (8)$$

A high-quality reference voltage is necessary for achieving the best performance from the ADS1282. Noise and drift on the reference degrade overall system performance, and it is critical that special care be given to the circuitry generating the reference voltages in order to achieve full performance. For most applications, a 1μF ceramic capacitor applied directly to the reference inputs pins is suggested.

### MASTER CLOCK INPUT (CLK)

The ADS1282 requires a clock input for operation. The clock is applied to the CLK pin. The data conversion rate scales directly with the CLK frequency. Power consumption versus CLK frequency is relatively constant (see the *Typical Characteristics*).

As with any high-speed data converter, a high-quality, low-jitter clock is essential for optimum performance. Crystal clock oscillators are the recommended clock source. Make sure to avoid excess ringing on the clock input; keep the clock trace as short as possible and use a 50Ω series resistor close to the source.

### SYNCHRONIZATION (SYNC PIN AND SYNC COMMAND)

The ADS1282 can be synchronized to an external event, as well as synchronized to other ADS1282 devices if the sync event is applied simultaneously to all devices.

The ADS1282 has two sources for synchronization: the SYNC input pin and the SYNC command. The ADS1282 also has two synchronizing modes: Pulse-sync and Continuous-sync. In Pulse-sync mode, the ADS1282 synchronizes to a single sync event. In Continuous-sync mode, either the device synchronizes to a single sync event or a continuous clock is applied to the pin with a period equal to integer multiples of the data rate. When the periods of the sync input and the DRDY output do not match, the ADS1282 re-synchronizes and conversions are restarted. Note that in Pin control mode, the RESET input serves as the SYNC control.

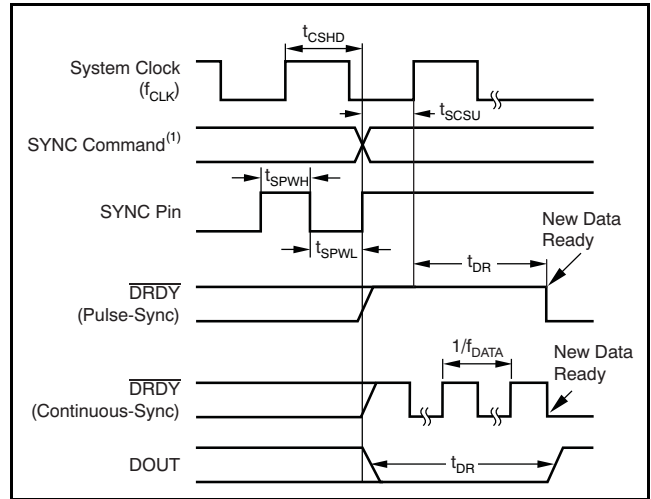
**PULSE-SYNC MODE**

In Pulse-sync mode, the ADS1282 stops and restarts the conversion process when a sync event occurs (by pin or command). When the sync event occurs, the device resets the internal memory;  $\overline{\text{DRDY}}$  goes high, and after the digital filter has settled, new conversion data are available, as shown in Figure 22 and Table 10.

**CONTINUOUS-SYNC MODE**

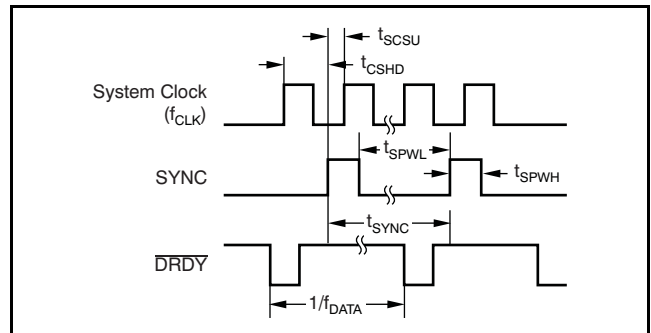
In Continuous-sync mode, either a single sync pulse or a continuous clock may be applied. When a single sync pulse is applied (rising edge), the device behaves similar to the Pulse-sync mode. However, in this mode,  $\overline{\text{DRDY}}$  continues to toggle unaffected but the DOUT output is held low until data are ready. When the conversion data are non-zero, new conversion data are ready (as shown in Figure 22).

When a continuous clock is applied to the SYNC pin, the period must be an integral multiple of the output data rate or the device re-synchronizes. When the sync input is first applied on the first rising edge of CLK, the device re-synchronizes (under the condition  $t_{\text{SYNC}} \neq N/f_{\text{DATA}}$ ).  $\overline{\text{DRDY}}$  continues to output but DOUT is held low until the new data are ready. Then, if the period of the applied sync clock matches an integral multiple of the output data rate, the device freely runs without re-synchronization. The phase of the applied clock and output data rate ( $\overline{\text{DRDY}}$ ) do not have to match. Figure 23 shows the timing for Continuous-Sync mode.



(1) Command takes effect on the next rising CLK edge after the eighth rising SCLK edge. In order for the SYNC command to be effective for synchronization of multiple devices, the command must be broadcast to devices simultaneously.

**Figure 22. Pulse-Sync Timing, Continuous-Sync Timing with Single Sync**



**Figure 23. Continuous-Sync Timing with Sync Clock**

**Table 10. Pulse-Sync Timing for Figure 22 and Figure 23**

| PARAMETER            | DESCRIPTION                                    | MIN  | MAX      | UNITS               |
|----------------------|--|--|----------|---------------------|
| $t_{\text{SYNC}}$    | Sync period <sup>(1)</sup>                     | 1  | Infinite | $n/f_{\text{DATA}}$ |
| $t_{\text{CSHD}}$    | CLK to SYNC hold time to not latch on CLK edge | 10   |          | ns                  |
| $t_{\text{SCSU}}$    | SYNC to CLK setup time to latch on CLK edge    | 10   |          | ns                  |
| $t_{\text{SPWH, L}}$ | SYNC pulse width, high or low                  | 2  |          | $1/f_{\text{CLK}}$  |
| $t_{\text{DR}}$      | Time for data ready (SINC filter)              | See Appendix, Table 24                             |          |                     |
|                      | Time for data ready (FIR filter)               | $62.98046875/f_{\text{DATA}} + 466/f_{\text{CLK}}$ |          |                     |

(1) Continuous-Sync mode; a free-running SYNC clock input without causing re-synchronization.

## RESET (RESET Pin and Reset Command)

The ADS1282 may be reset in two ways: toggle the  $\overline{\text{RESET}}$  pin low or send a Reset command. When using the  $\overline{\text{RESET}}$  pin, take it low and hold for at least  $2/f_{\text{CLK}}$  to force a reset. The ADS1282 is held in reset until the pin is released. By command,  $\overline{\text{RESET}}$  takes effect on the next rising edge of  $f_{\text{CLK}}$  after the eighth rising edge of SCLK of the command. Note: to ensure that the Reset command can function, the SPI interface may require a reset; see the [Serial Interface](#) section.

In reset, registers are set to default and the conversions are synchronized on the next rising edge of CLK. New conversion data are available, as shown in [Figure 24](#) and [Table 11](#).

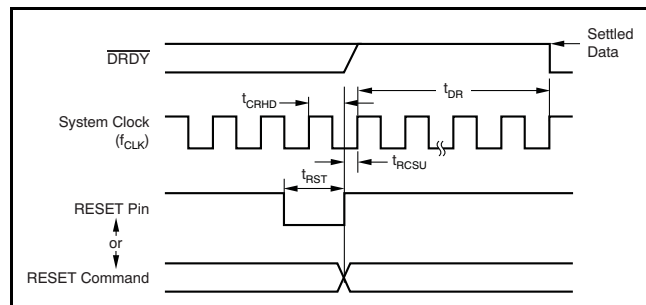


Figure 24. Reset Timing

Table 11. Reset Timing for [Figure 24](#)

| PARAMETER         | DESCRIPTION                                 | MIN  | UNITS              |
|-------------------|---|--|--------------------|
| $t_{\text{CRHD}}$ | CLK to $\overline{\text{RESET}}$ hold time  | 10   | ns                 |
| $t_{\text{RGSU}}$ | $\overline{\text{RESET}}$ to CLK setup time | 10   | ns                 |
| $t_{\text{RST}}$  | $\overline{\text{RESET}}$ low               | 2  | $1/f_{\text{CLK}}$ |
| $t_{\text{DR}}$   | Time for data ready                         | $62.98046875/f_{\text{DATA}} + 468/f_{\text{CLK}}$ |                    |

## POWER-DOWN (PWN Pin and Standby Command)

There are two ways to power-down the ADS1282: take the  $\overline{\text{PWN}}$  pin low or send a Standby command. When the  $\overline{\text{PWN}}$  pin is pulled low, the internal circuitry is disabled to minimize power and the contents of the register settings are reset.

Table 12. Power-On,  $\overline{\text{PWN}}$  Pin, and Wake-Up Command Timing for New Data

| PARAMETER       | DESCRIPTION   |   | FILTER MODE         |
|-----------------|---|---|---------------------|
| $t_{\text{DR}}$ | Time for data ready $2^{16}$ CLK cycles after power-on; and new data ready after $\overline{\text{PWN}}$ pin or Wake-Up command | See <a href="#">Appendix, Table 24</a>                            | SINC <sup>(1)</sup> |
|                 |   | $62.98046875/f_{\text{DATA}} + 468/f_{\text{CLK}}$ <sup>(2)</sup> | FIR                 |

- (1) Supply power-on and  $\overline{\text{PWN}}$  pin default is 1000SPS FIR.
- (2) Subtract two CLK cycles for the Wake-Up command. The Wake-Up command is timed from the next rising edge of CLK to after the eighth rising edge of SCLK during command to  $\overline{\text{DRDY}}$  falling.

In power-down, note that the device outputs remain active and the device inputs must not float. When the Standby command is sent, the SPI port and the configuration registers are kept active. [Figure 25](#) and [Table 12](#) show the timing.

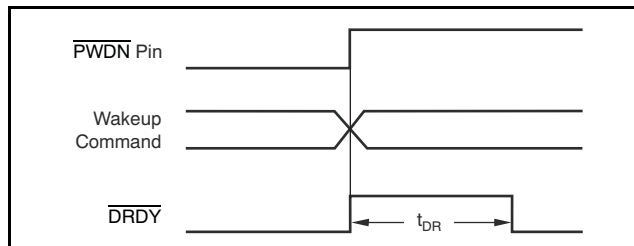


Figure 25.  $\overline{\text{PWN}}$  Pin and Wake-Up Command Timing  
([Table 12](#) shows  $t_{\text{DR}}$ )

## POWER-ON SEQUENCE

The ADS1282 has three power supplies: AVDD, AVSS, and DVDD. [Figure 26](#) shows the power-on sequence of the ADS1282. The power supplies can be sequenced in any order. The supplies [the difference of (AVDD – AVSS) and DVDD] generate an internal reset whose outputs are summed to generate a global internal reset. After the supplies have crossed the minimum thresholds,  $2^{16} f_{\text{CLK}}$  cycles are counted before releasing the internal reset. After the internal reset is released, new conversion data are available, as shown in [Figure 26](#) and [Table 12](#).

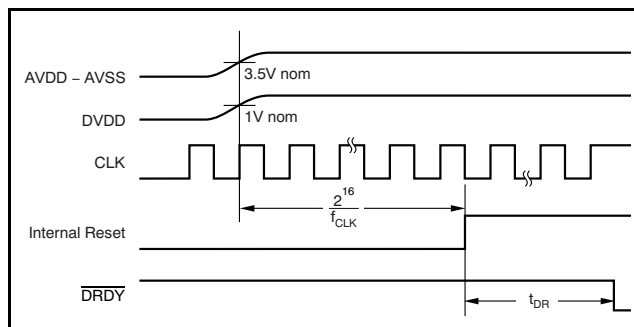


Figure 26. Power-On Sequence

### DVDD POWER SUPPLY

The DVDD supply operates over the range of +1.65V to +3.6V. If DVDD is operated at less than 2.25V, connect the DVDD pin to the BYPASS pin. If DVDD is greater than or equal to 2.25V, do not connect DVDD to the BYPASS pin (open connection). Figure 27 shows this connection.

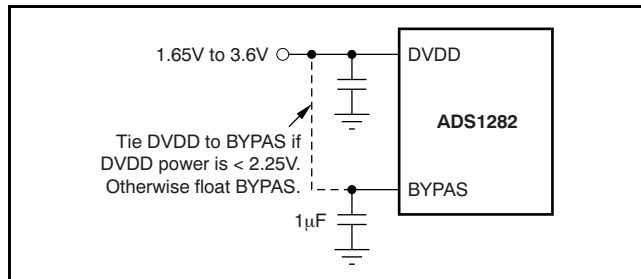


Figure 27. DVDD Power

### SERIAL INTERFACE

A serial interface is used to read the conversion data and access the configuration registers. The interface consists of three basic signals: SCLK, DIN, and DOUT. An additional output,  $\overline{\text{DRDY}}$ , transitions low in Read Data Continuous mode when data are ready for retrieval. Figure 28 shows the connection when multiple converters are used.

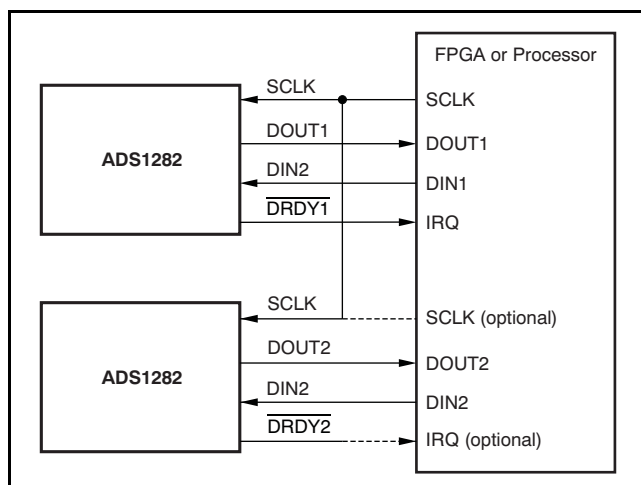


Figure 28. Pin Mode Interface for Multiple Devices

### Serial Clock (SCLK)

The serial clock (SCLK) is an input that is used to clock data into (DIN) and out of (DOUT) the ADS1282. This input is a Schmitt-trigger input that has a high degree of noise immunity. However, it is recommended to keep SCLK as clean as possible to prevent possible glitches from inadvertently shifting the data.

Data are shifted into DIN on the rising edge of SCLK and data are shifted out of DOUT on the falling edge of SCLK. If SCLK is held low for 64  $\overline{\text{DRDY}}$  cycles, data transfer or commands in progress terminate and the SPI interface resets. The next SCLK pulse starts a new communication cycle. This timeout feature can be used to recover the interface when a transmission is interrupted or SCLK inadvertently glitches. SCLK should remain low when not active.

### Data Input (DIN)

The data input pin (DIN) is used to input register data and commands to the ADS1282. Keep DIN low when reading conversion data in the Continuous Read Data mode (except when issuing a STOP Read Data Continuous command). Data on DIN are shifted into the converter on the rising edge of SCLK. In Pin mode, DIN is not used.

### Data Output (DOUT)

The data output pin (DOUT) is used to output data from the ADS1282. Data are shifted out on DOUT on the falling edge of SCLK. In Pin mode, only conversion data are read from this pin.

### Data Ready ( $\overline{\text{DRDY}}$ )

$\overline{\text{DRDY}}$  is an output; when it transitions low, this transition indicates new conversion data are ready, as shown in Figure 29. When reading data by the continuous mode, the data must be read within four CLK periods before  $\overline{\text{DRDY}}$  goes low again or the data are overwritten with new conversion data. When reading data by the command mode, the read operation can overlap the occurrence of the next  $\overline{\text{DRDY}}$  without data corruption.

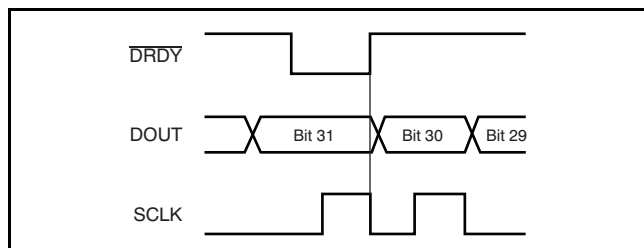


Figure 29.  $\overline{\text{DRDY}}$  with Data Retrieval

$\overline{\text{DRDY}}$  resets high on the first falling edge of SCLK. Figure 29 and Figure 30 show the function of  $\overline{\text{DRDY}}$  with and without data readback, respectively.

If data are not retrieved (no SCLK provided),  $\overline{\text{DRDY}}$  pulses high for four  $f_{\text{CLK}}$  periods during the update time, as shown in Figure 30.

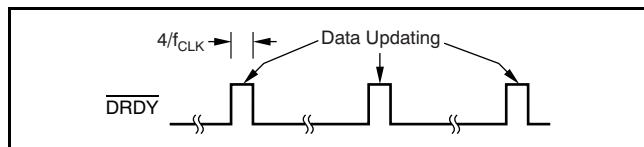


Figure 30.  $\overline{\text{DRDY}}$  With No Data Retrieval

### DATA FORMAT

The ADS1282 provides 32 bits of conversion data in binary two's complement format, as shown in Table 13. The LSB of the data is a redundant sign bit: '0' for positive numbers and '1' for negative numbers. However, when the output is clipped to +FS, the LSB = 1; when the output is clipped to -FS, the LSB = 0. If desired, the data readback may be stopped at 24 bits.

Table 13. Ideal Output Code versus Input Signal

| INPUT SIGNAL $V_{\text{IN}}$<br>( $\text{AINP} - \text{AINN}$ ) | 32-BIT IDEAL OUTPUT<br>CODE <sup>(1)</sup> |
|---|--|
| $> \frac{V_{\text{REF}}}{2}$                                    | 7FFFFFFh                                   |
| $\frac{V_{\text{REF}}}{2}$                                      | 7FFFFFFEh                                  |
| $\frac{V_{\text{REF}}}{2 \times (2^{30} - 1)}$                  | 0000002h                                   |
| 0   | 0000000h                                   |
| $\frac{-V_{\text{REF}}}{2 \times (2^{30} - 1)}$                 | FFFFFFFh                                   |
| $\frac{-V_{\text{REF}}}{2} \times \frac{2^{30}}{2^{30} - 1}$    | 8000001h                                   |
| $< \frac{-V_{\text{REF}}}{2} \times \frac{2^{30}}{2^{30} - 1}$  | 8000000h                                   |

(1) Excludes effects of noise, linearity, offset, and gain errors.

**READING DATA**

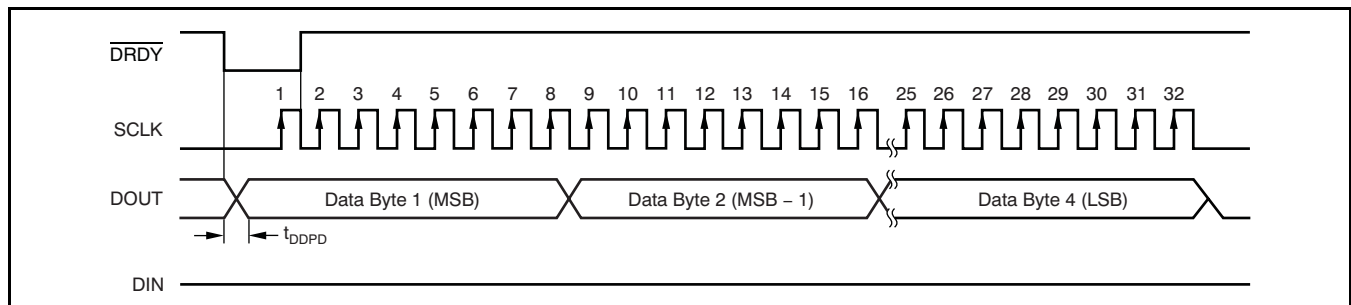
The ADS1282 has two ways to read conversion data: Read Data Continuous and Read Data By Command.

**Read Data Continuous**

In the Read Data Continuous mode, the conversion data are shifted out directly from the device without the need for sending a read command. This mode is the default mode at power-on. This mode is also enabled by the RDATA<sub>C</sub> command. When  $\overline{\text{DRDY}}$  goes low, indicating that new data are available, the MSB of data appears on DOUT, as shown in Figure 31. The data are normally read on the rising edge of SCLK, at the occurrence of the first falling edge of SCLK,  $\overline{\text{DRDY}}$  returns high. After 32 bits of

data have been shifted out, further SCLK transitions cause DOUT to go low. If desired, the read operation may be stopped at 24 bits. The data shift operation must be completed within four CLK periods before  $\overline{\text{DRDY}}$  falls again or the data may be corrupted.

The Read Data Continuous mode is the default data mode for Pin mode. When a Stop Read Data Continuous command is issued, the  $\overline{\text{DRDY}}$  output is blocked but the ADS1282 continues conversions. In stop continuous mode, the data can only be read by command.



**Figure 31. Read Data Continuous**

**Table 14. Timing Data for Figure 31**

| PARAMETER         | DESCRIPTION  | MIN | TYP | MAX | UNITS |
|-------------------|--|-----|-----|-----|-------|
| $t_{\text{DDPD}}$ | $\overline{\text{DRDY}}$ to valid MSB on DOUT propagation delay <sup>(1)</sup> |     |     | 100 | ns    |

(1) Load on DOUT = 20pF || 100kΩ.

### Read Data By Command

The Read Data Continuous mode is stopped by the SDATAC command. In this mode, conversion data are read by command. In the Read Data By Command mode, a read data command must be sent to the device for each data conversion (as shown in Figure 32). When the read data command is received (on the eighth SCLK rising edge), data are available to read only when DRDY goes low ( $t_{DR}$ ). When DRDY goes low, conversion data appear on DOUT. The data may be read on the rising edge of SCLK.

### ONE-SHOT OPERATION

The ADS1282 can perform very power-efficient, one-shot conversions using the STANDBY command while under software control. Figure 33 shows this sequence. First, issue the STANDBY command to set the Standby mode.

When ready to make a measurement, issue the WAKEUP command. Monitor  $\overline{DRDY}$ ; when it goes low, the fully settled conversion data are ready and may be read directly in Read Data Continuous mode. Afterwards, issue another STANDBY command. When ready for the next measurement, repeat the cycle starting with another WAKEUP command.

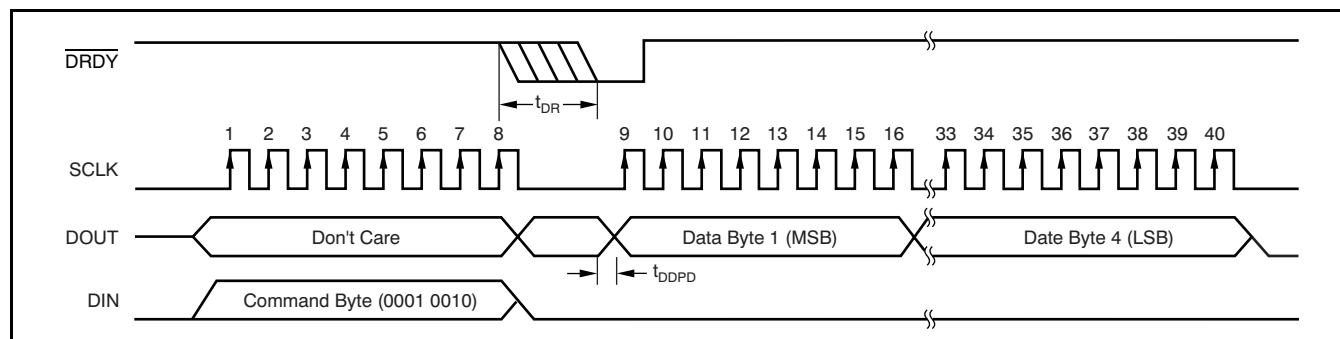
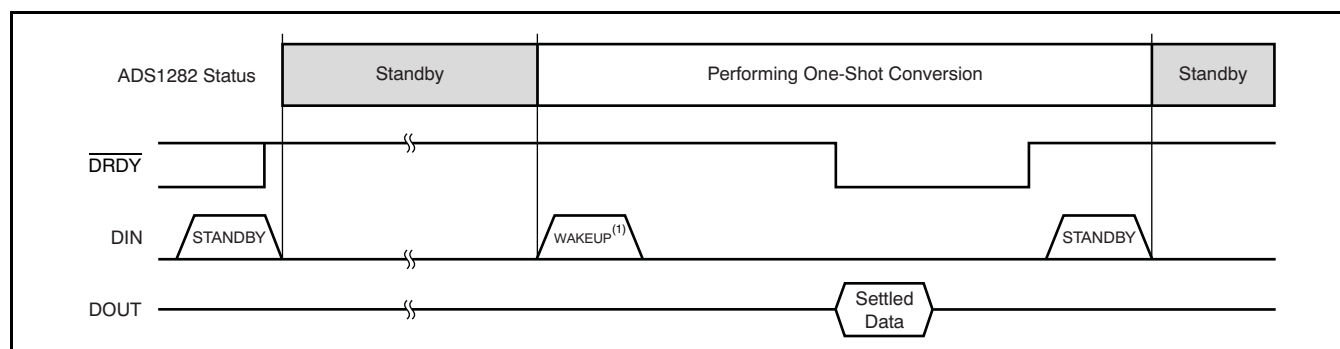


Figure 32. Read Data By Command, RDAT ( $t_{DDPD}$  timing is given in Table 14)

Table 15. Read Data Timing for Figure 32

| PARAMETER | DESCRIPTION                               | MIN | TYP | MAX | UNITS      |
|-----------|---|-----|-----|-----|------------|
| $t_{DR}$  | Time for new data after data read command | 0   |     | 1   | $f_{DATA}$ |



(1) See Figure 25 and Table 12 for time to new data.

Figure 33. One-Shot Conversions Using the STANDBY Command

PRODUCT PREVIEW



### OFFSET AND FULL-SCALE CALIBRATION REGISTERS

The conversion data can be scaled for offset and gain before yielding the final output code. As shown in Figure 34, the output of the digital filter is first subtracted by the offset register (OFC) and then multiplied by the full-scale register (FSC). Equation 9 shows the scaling:

$$\text{Final Output Data} = (\text{Input} - \text{OFSCAL}) \times \frac{\text{GANCAL}}{400000\text{h}} \tag{9}$$

The values of the offset and full-scale registers are set by writing to them directly, or they are set automatically by calibration commands.

#### OFC[2:0] Registers

The offset calibration is a 24-bit word, composed of three 8-bit registers, as shown in Table 18. The offset register is left-justified to align with the 32-bits of conversion data. The offset is in twos complement format with a maximum positive value of 7FFFFFFh and a maximum negative value of 800000h. This value is subtracted from the conversion data. A register value of 000000h has no offset correction (default value). Note that while the offset calibration register value can correct offsets ranging from -FS to +FS (as shown in Table 16), to avoid input overload, the analog inputs cannot exceed the full-scale range.

Table 16. Offset Calibration Values

| OFC REGISTER | FINAL OUTPUT CODE <sup>(1)</sup> |
|--------------|----------------------------------|
| 7FFFFFFh     | 80000000h                        |
| 000001h      | FFFFFF00h                        |
| 000000h      | 00000000h                        |
| FFFFFFFh     | 00000100h                        |
| 800000h      | 7FFFFFF00h                       |

(1) Full 32-bit final output code with zero code input.

#### FSC[2:0] Registers

The full-scale calibration is a 24-bit word, composed of three 8-bit registers, as shown in Table 19. The full-scale calibration value is 24-bit, straight offset binary, normalized to 1.0 at code 400000h. Table 17 summarizes the scaling of the full-scale register. A register value of 400000h (default value) has no gain correction (gain = 1). Note that while the gain calibration register value corrects gain errors above 1 (gain correction < 1), the full-scale range of the analog inputs cannot be exceeded to avoid input overload.

Table 17. Full-Scale Calibration Register Values

| FSC REGISTER | GAIN CORRECTION |
|--------------|-----------------|
| 800000h      | 2.0             |
| 400000h      | 1.0             |
| 200000h      | 0.5             |
| 000000h      | 0               |

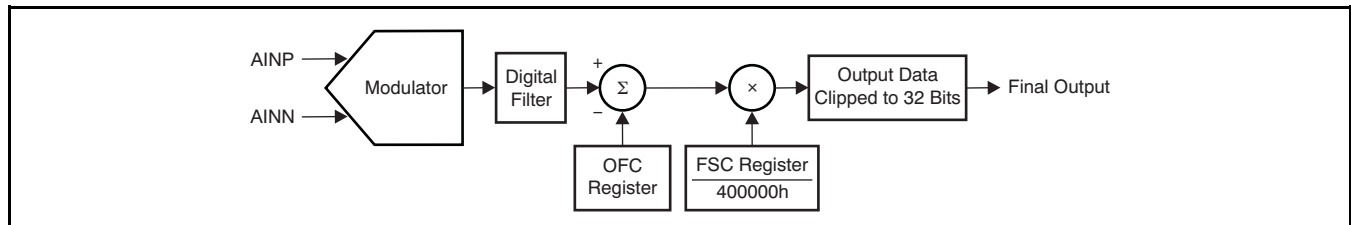


Figure 34. Calibration Block Diagram

Table 18. Offset Calibration Word

| REGISTER | BYTE | BIT ORDER |     |     |     |     |     |     |          |
|----------|------|-----------|-----|-----|-----|-----|-----|-----|----------|
| OFC0     | LSB  | B7        | B6  | B5  | B4  | B3  | B2  | B1  | B0 (LSB) |
| OFC1     | MID  | B15       | B14 | B13 | B12 | B11 | B10 | B9  | B8       |
| OFC2     | MSB  | B23 (MSB) | B22 | B21 | B20 | B19 | B18 | B17 | B16      |

Table 19. Full-Scale Calibration Word

| REGISTER | BYTE | BIT ORDER |     |     |     |     |     |     |          |
|----------|------|-----------|-----|-----|-----|-----|-----|-----|----------|
| FSC0     | LSB  | B7        | B6  | B5  | B4  | B3  | B2  | B1  | B0 (LSB) |
| FSC1     | MID  | B15       | B14 | B13 | B12 | B11 | B10 | B9  | B8       |
| FSC2     | MSB  | B23 (MSB) | B22 | B21 | B20 | B19 | B18 | B17 | B16      |



## CALIBRATION COMMANDS

Calibration commands may be sent to the ADS1282 to calibrate the conversion data. The values of the offset and gain calibration registers are internally written to perform calibration. The appropriate input signals must be applied to the ADS1282 inputs before sending the commands. Use slower data rates to achieve more consistent calibration results; this effect is a byproduct of the lower noise that these data rates provide. Also, if calibrating at power-on, be sure the reference voltage is fully settled.

Figure 35 shows the calibration command sequence. After the analog input voltage (and reference) have stabilized, send the Stop Data Continuous command followed by the SYNC and Read Data Continuous commands. 64 data periods later,  $\overline{\text{DRDY}}$  goes low. After  $\overline{\text{DRDY}}$  goes low, send the Stop Data Continuous, then the Calibrate command followed by the Read Data Continuous command. After 16 data periods, calibration is complete and conversion data may be read at this time. The SYNC input must remain high during the calibration sequence.

## OFSCAL Command

The OFSCAL command performs an offset calibration. Before sending the offset calibration command, a zero input signal must be applied to the ADS1282 and the inputs allowed to stabilize. When the command is sent, the ADS1282 averages 16 readings and then writes this value to the OFC register. The contents of the OFC register may be subsequently read or written. During offset calibration, the full-scale correction is bypassed.

## GANCAL Command

The GANCAL command performs a gain calibration. Before sending the GANCAL command, a dc input signal must be applied that is in the range of, but not exceeding, positive or negative full-scale. After the signal has stabilized, the command can be sent. The ADS1282 averages 16 readings, then computes the value that compensates for the gain error. The gain correction value is then written to the FSC register. The contents of the GANCAL register may be subsequently read or written. Note that while the gain calibration command corrects for gain errors above 1 (gain correction < 1), to avoid input overload, the analog inputs cannot exceed full-scale range. The gain calibration should be performed after the offset calibration.

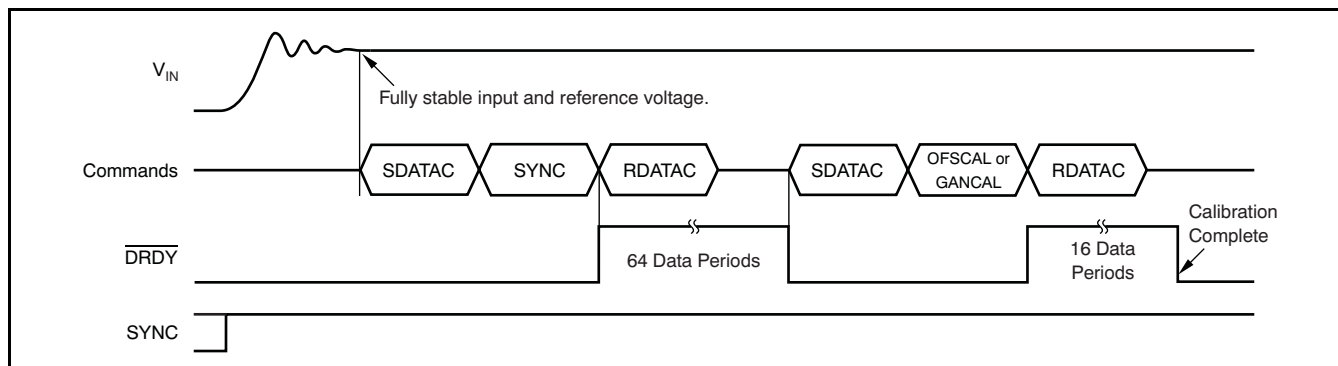


Figure 35. Offset/Gain Calibration Timing

### USER CALIBRATION

System calibration of the ADS1282 can be performed without using the calibration commands. This procedure requires the calibration values to be externally calculated and then written to the calibration registers. The steps for this procedure are:

1. Set the OFSCAL[2:0] register = 0h and GANCAL[2:0] = 400000h. These values set the offset and gain registers to 0 and 1, respectively.
2. Apply a zero differential input to the input of the system. Wait for the system to settle and then average *n* output readings. Higher numbers of averaged readings result in more consistent calibration. Write the averaged value to the OFC register.
3. Apply a differential positive or negative dc signal, or an ac signal, less than the *full-scale* input to the system. Wait for the system to settle and then average the *n* output readings.

The value written to the FSC registers is calculated by [Equation 10](#) and [Equation 11](#).

DC signal calibration is shown in [Equation 10](#) and [Equation 11](#). The expected output code is based on 31-bit output data.

$$FSC[2:0] = 400000h \times \left[ \frac{\text{Expected Output Code}}{\text{Actual Output Code}} \right] \quad (10)$$

$$\text{Expected Output Code} = 2 \times V_{IN} \times \frac{2^{31}}{V_{REF}} \quad (11)$$

For ac signal calibration, use an RMS value of collected data (as shown in [Equation 12](#)).

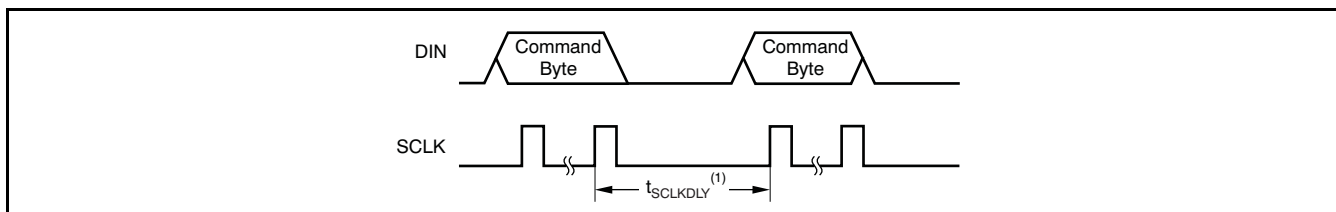
$$FSC[2:0] = 400000h \times \frac{\text{Expected RMS Value}}{\text{Actual RMS Value}} \quad (12)$$

## COMMANDS

The commands listed in [Table 20](#) control the operation of the ADS1282. Command operations are only possible in Register mode. Command operations are stand-alone (that is, 1 byte in length); the register reads and writes require a second command byte in addition to the actual data bytes.

A delay of  $24 f_{CLK}$  cycles between commands and between bytes within a command is required, starting from the last SCLK rising edge of one command to the first SCLK rising edge of the following command. This delay is shown in [Figure 36](#).

In Read Data Continuous mode, the ADS1282 places conversion data on the DOUT pin as SCLK is applied. As a consequence of the potential conflict of conversion data on DOUT and data placed on DOUT resulting from a register or Read Data By Command operation, it is necessary to send a STOP Read Data Continuous command before Register or Data Read By Command. The STOP Read Data Continuous command disables the direct output of conversion data on the DOUT pin.



(1)  $t_{SCLKDLY} = 24/f_{CLK}$  (min).

**Figure 36. Consecutive Commands**

**Table 20. Command Descriptions**

| COMMAND | TYPE        | DESCRIPTION  | 1st COMMAND BYTE <sup>(1)(2)</sup> | 2nd COMMAND BYTE <sup>(3)</sup> |
|---------|-------------|--|------------------------------------|---------------------------------|
| WAKEUP  | Control     | Wake-up from Standby mode  | 0000 000X (00h or 01h)             |                                 |
| STANDBY | Control     | Enter Standby mode   | 0000 001X (02h or 03h)             |                                 |
| SYNC    | Control     | Synchronize the A/D conversion                                     | 0000 010X (04h or 5h)              |                                 |
| RESET   | Control     | Reset registers to default values                                  | 0000 011X (06h or 07h)             |                                 |
| RDATA_C | Control     | Read data continuous   | 0001 0000 (10h)                    |                                 |
| SDATA_C | Control     | Stop read data continuous  | 0001 0001 (11h)                    |                                 |
| RDATA   | Data        | Read data by command <sup>(4)</sup>                                | 0001 0010 (12h)                    |                                 |
| RREG    | Register    | Read <i>nnnn</i> register(s) at address <i>rrrr</i> <sup>(4)</sup> | 001r rrrr (20h + 000r rrrr)        | 000n nnnn (00h + n nnnn)        |
| WREG    | Register    | Write <i>nnnn</i> register(s) at address <i>rrrr</i>               | 010r rrrr (40h + 000r rrrr)        | 000n nnnn (00h + n nnnn)        |
| OFSCAL  | Calibration | Offset calibration   | 0110 0000 (60h)                    |                                 |
| GANCAL  | Calibration | Gain calibration   | 0110 0001 (61h)                    |                                 |

- (1) X = don't care.
- (2) rrrr = starting address for register read and write commands.
- (3) nnnn = number of registers to be read/written – 1. For example, to read/write three registers, set *nnnn* = 2 (00010).
- (4) Required to cancel Read Data Continuous mode before sending a command.

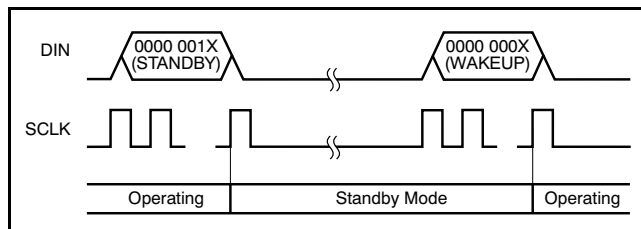
PRODUCT PREVIEW

**WAKEUP: Wake-Up From Standby Mode**

**Description:** This command is used to exit the standby mode. Upon sending the command, the time for the first data to be ready is illustrated in [Figure 25](#) and [Table 13](#). Sending this command during normal operation has no effect; for example, reading data by the Read Data Continuous method with DIN held low.

**STANDBY: Standby Mode**

**Description:** This command places the ADS1282 into Standby mode. In Standby, the device enters a reduced power state where a low quiescent current remains to keep the register settings and SPI interface active. For complete device shutdown, take the PWDN pin low (register settings are not saved). To exit Standby mode, issue the WAKEUP command. The operation of Standby mode is shown in [Figure 37](#).



**Figure 37. STANDBY Command Sequence**

**SYNC: Synchronize the A/D Conversion**

**Description:** This command synchronizes the A/D conversion. Upon receipt of the command, the reading in progress is cancelled and the conversion process is re-started. In order to synchronize multiple ADS1282s, the command must be sent simultaneously to all devices. Note that the SYNC pin must be high for this command.

**RESET: Reset the Device**

**Description:** The RESET command resets the registers to default values, enables the Read Data Continuous mode, and restarts the conversion process; the RESET command is functionally the same as the  $\overline{\text{RESET}}$  pin. See [Figure 24](#) for the RESET command timing.

**RDATA: Read Data Continuous**

**Description:** This command enables the Read Data Continuous mode (default mode). In this mode, conversion data can be read from the device directly without the need to supply a data read command. Each time  $\overline{\text{DRDY}}$  falls low, new data are available to read. See the [Read Data Continuous](#) section for more details.

**SDATAC: Stop Read Data Continuous**

**Description:** This command stops the Read Data Continuous mode. Exiting the Read Data Continuous mode is required before sending Register and Data read commands. This command suppresses the  $\overline{\text{DRDY}}$  output, but the ADS1282 continues conversions.

**RDATA: Read Data By Command**

**Description:** This command reads the conversion data. See the [Read Data By Command](#) section for more details.

**RREG: Read Register Data**

**Description:** This command is used to read single or multiple register data. The command consists of a two-byte op-code argument followed by the output of register data. The first byte of the op-code includes the starting address, and the second byte specifies the number of registers to read – 1.

First command byte: 001r rrrr, where rrrrr is the starting address of the first register.

Second command byte: 000n nnnn, where nnnnn is the number of registers – 1 to read.

Starting with the 16th falling edge of SCLK, the register data appear on DOUT.

The RREG command is illustrated in [Figure 38](#). Note that a delay of 24  $f_{\text{CLK}}$  cycles is required between each byte transaction.

**WREG: Write to Register**

**Description:** This command writes single or multiple register data. The command consists of a two-byte op-code argument followed by the input of register data. The first byte of the op-code contains the starting address and the second byte specifies the number of registers to write – 1.

First command byte: 001r rrrr, where rrrrr is the starting address of the first register.

Second command byte: 000n nnnn, where nnnnn is the number of registers – 1 to write.

Data byte(s): one or more register data bytes, depending on the number of registers specified.

[Figure 39](#) illustrates the WREG command.

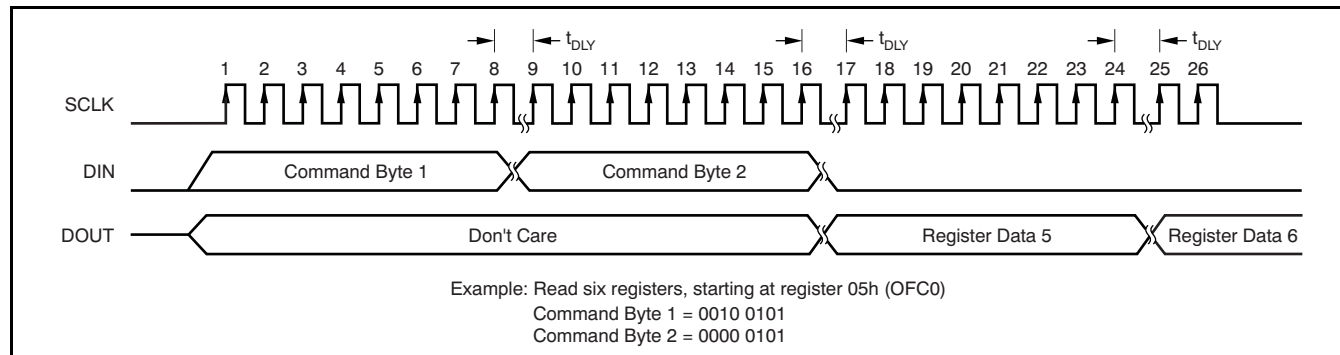
Note that a delay of 24  $f_{\text{CLK}}$  cycles is required between each byte transaction.

**OFSCAL: Offset Calibration**

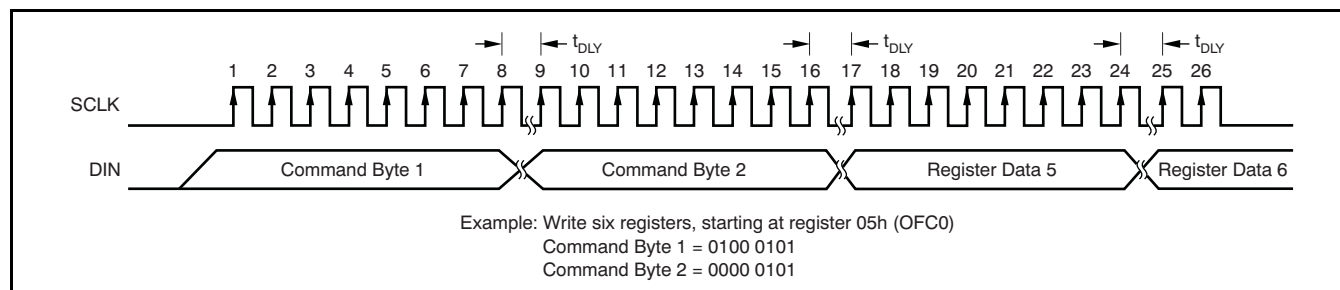
**Description:** This command performs an offset calibration. The inputs to the converter (or the inputs to the external pre-amplifier) should be zeroed and allowed to stabilize before sending this command. The offset calibration register updates after this operation. See the [Calibration Commands](#) section for more details.

**GANCAL: Gain Calibration**

**Description:** This command performs a gain calibration. The inputs to the converter should have a stable dc input, preferably close to (but not exceeding) positive full-scale. The gain calibration register updates after this operation. See the [Calibration Commands](#) section for more details.



**Figure 38. Read Register Data (Table 21 shows  $t_{DLY}$ )**



**Figure 39. Write Register Data (Table 21 shows  $t_{DLY}$ )**

**Table 21.  $t_{DRY}$  Value**

| PARAMETER | MIN                |
|-----------|--------------------|
| $t_{DLY}$ | 24f <sub>CLK</sub> |

PRODUCT PREVIEW

**REGISTER MAP**

The Register mode (PIN = 0) allows read and write access to the device registers. Collectively, the registers contain all the information needed to configure the part, such as data rate, filter selection, calibration, etc. The registers are accessed by the RREG and WREG commands. The registers can be accessed individually or as a block of registers by sending or receiving consecutive bytes.

**Table 22. Register Map**

| ADDRESS | REGISTER | RESET VALUE | BIT 7 | BIT 6 | BIT 5 | BIT 4 | BIT 3 | BIT 2 | BIT 1  | BIT 0  |
|---------|----------|-------------|-------|-------|-------|-------|-------|-------|--------|--------|
| 00h     | ID       | X0h         | ID3   | ID2   | ID1   | ID0   | 0     | 0     | 0      | 0      |
| 01h     | CONFIG0  | 52h         | SYNC  | MODE  | DR2   | DR1   | DR0   | PHS   | FILTR1 | FILTR0 |
| 02h     | CONFIG1  | 08h         | 0     | MUX2  | MUX1  | MUX0  | CHOP  | PGA2  | PGA1   | PGA0   |
| 03h     | HPF0     | 32h         | HPF07 | HPF06 | HPF05 | HPF04 | HPF03 | HPF02 | HPF01  | HPF00  |
| 04h     | HPF1     | 03h         | HPF15 | HPF14 | HPF13 | HPF12 | HPF11 | HPF10 | HPF09  | HPF08  |
| 05h     | OFC0     | 00h         | OFC07 | OFC06 | OFC05 | OFC04 | OFC03 | OFC02 | OFC01  | OFC00  |
| 06h     | OFC1     | 00h         | OFC15 | OFC14 | OFC13 | OFC12 | OFC11 | OFC10 | OFC09  | OFC08  |
| 07h     | OFC2     | 00h         | OFC23 | OFC22 | OFC21 | OFC20 | OFC19 | OFC18 | OFC17  | OFC16  |
| 08h     | FSC0     | 00h         | FSC07 | FSC06 | FSC05 | FSC04 | FSC03 | FSC02 | FSC01  | FSC00  |
| 09h     | FSC1     | 00h         | FSC15 | FSC14 | FSC13 | FSC12 | FSC11 | FSC10 | FSC09  | FSC08  |
| 0Ah     | FSC2     | 40h         | FSC23 | FSC22 | FSC21 | FSC20 | FSC19 | FSC18 | FSC17  | FSC16  |

**ID : ID REGISTER (ADDRESS 00h)**

|     |     |     |     |   |   |   |   |
|-----|-----|-----|-----|---|---|---|---|
| 7   | 6   | 5   | 4   | 3 | 2 | 1 | 0 |
| ID3 | ID2 | ID1 | ID0 | 0 | 0 | 0 | 0 |

Reset value = X8h.

**Bit[7:4]**                      **ID[3:0]**  
 Factory-programmed identification bits (read-only)

**Bit[3:0]**                      **Reserved**  
 Always write '0'

PRODUCT PREVIEW

**CONFIG0 : CONFIGURATION REGISTER 0 (ADDRESS 01h)**

| 7    | 6    | 5   | 4   | 3   | 2     | 1      | 0      |
|------|------|-----|-----|-----|-------|--------|--------|
| SYNC | MODE | DR2 | DR1 | DR0 | PHASE | FILTR1 | FILTR0 |

Reset value = 52h.

- Bit[7]                    SYNC**  
Synchronization mode  
0: Pulse SYNC mode (default)  
1: Continuous SYNC mode
  
- Bit[6]                    MODE**  
0: Low-power mode  
1: High-resolution mode
  
- Bit[5:3]                 Data Rate Select**  
**DR[2:0]**  
000: 250SPS  
001: 500SPS  
010: 1000SPS (default)  
011: 2000SPS  
100: 4000SPS
  
- Bit[2]                    FIR Phase Response**  
**PHASE**  
0: Linear phase (default)  
1: Minimum phase
  
- Bit[1:0]                 Digital Filter Select**  
**FILTR[1:0]**  
Digital filter configuration  
00: On-chip filter bypassed, modulator output mode  
01: Sinc filter block only  
10: Sinc + LPF filter blocks (default)  
11: Sinc + LPF + HPF filter blocks

**CONFIG1 : CONFIGURATION REGISTER 1 (ADDRESS 02h)**

|   |      |      |      |      |      |      |      |
|---|------|------|------|------|------|------|------|
| 7 | 6    | 5    | 4    | 3    | 2    | 1    | 0    |
| 0 | MUX2 | MUX1 | MUX0 | CHOP | PGA2 | PGA1 | PGA0 |

Reset value = 08h.

- Bit[7]**                    **Reserved**  
Always write '0'
  
- Bit[6:4]**                **MUX Select**  
**MUX[2:0]**  
000: AINP1 and AINN1  
001: AINP2 and AINN2  
010: Internal short via 400Ω  
011: AINP1 and AINN1 connected to AINP2 and AINN2  
100: External short to AINN2
  
- Bit[3]**                    **PGA Chopping Enable**  
**CHOP**  
0: PGA chopping disabled  
1: PGA chopping enabled
  
- Bit[2:0]**                **PGA Gain Select**  
**PGA[2:0]**  
000: G = 1  
001: G = 2  
010: G = 4  
011: G = 8  
100: G = 16  
101: G = 32  
110: G = 64



### HPF1 and HPF0

These two bytes (high-byte and low-byte, respectively) set the corner frequency of the high-pass filter.

#### HPF0: High-Pass Filter Corner Frequency, Low Byte (Address 03h)

|      |      |      |      |      |      |      |      |
|------|------|------|------|------|------|------|------|
| 7    | 6    | 5    | 4    | 3    | 2    | 1    | 0    |
| HP07 | HP06 | HP05 | HP04 | HP03 | HP02 | HP01 | HP00 |

Reset value = 32h.

#### HPF1: High-Pass Filter Corner Frequency, High Byte (Address 04h)

|      |      |      |      |      |      |      |      |
|------|------|------|------|------|------|------|------|
| 7    | 6    | 5    | 4    | 3    | 2    | 1    | 0    |
| HP15 | HP14 | HP13 | HP12 | HP11 | HP10 | HP09 | HP08 |

Reset value = 03h.

### OFC2, OFC1, OFC0

These three bytes set the offset calibration value.

#### OFC0: Offset Calibration, Low Byte (Address 05h)

|      |      |      |      |      |      |      |      |
|------|------|------|------|------|------|------|------|
| 7    | 6    | 5    | 4    | 3    | 2    | 1    | 0    |
| OC07 | OC06 | OC05 | OC04 | OC03 | OC02 | OC01 | OC00 |

Reset value = 00h.

#### OFC1: Offset Calibration, Mid Byte (Address 06h)

|      |      |      |      |      |      |      |      |
|------|------|------|------|------|------|------|------|
| 7    | 6    | 5    | 4    | 3    | 2    | 1    | 0    |
| OC15 | OC14 | OC13 | OC12 | OC11 | OC10 | OC09 | OC08 |

Reset value = 00h.

#### OFC2: Offset Calibration, High Byte (Address 07h)

|      |      |      |      |      |      |      |      |
|------|------|------|------|------|------|------|------|
| 7    | 6    | 5    | 4    | 3    | 2    | 1    | 0    |
| OC23 | OC22 | OC21 | OC20 | OC19 | OC18 | OC17 | OC16 |

Reset value = 00h.

### FSC2, FSC1, FSC0

These three bytes set the full-scale calibration value.

#### FSC0: Gain Calibration, Low Byte (Address 08h)

|       |       |       |       |       |       |       |       |
|-------|-------|-------|-------|-------|-------|-------|-------|
| 7     | 6     | 5     | 4     | 3     | 2     | 1     | 0     |
| FSC07 | FSC06 | FSC05 | FSC04 | FSC03 | FSC02 | FSC01 | FSC00 |

Reset value = 00h.

#### FSC1: Gain Calibration, Mid Byte (Address 09h)

|       |       |       |       |       |       |       |       |
|-------|-------|-------|-------|-------|-------|-------|-------|
| 7     | 6     | 5     | 4     | 3     | 2     | 1     | 0     |
| FSC15 | FSC14 | FSC13 | FSC12 | FSC11 | FSC10 | FSC09 | FSC08 |

Reset value = 00h.

#### FSC2: Gain Calibration, High Byte (Address 0Ah)

|       |       |       |       |       |       |       |       |
|-------|-------|-------|-------|-------|-------|-------|-------|
| 7     | 6     | 5     | 4     | 3     | 2     | 1     | 0     |
| FSC23 | FSC22 | FSC21 | FSC20 | FSC19 | FSC18 | FSC17 | FSC16 |

Reset value = 40h.

## CONFIGURATION GUIDE

After RESET or power-on, the registers can be configured using the following procedure:

1. **Reset the serial interface.** Before using the serial interface, it may be necessary to recover the serial interface (undefined I/O power-up sequencing may cause false SCLK detection). To reset the SPI interface, toggle the  $\overline{\text{RESET}}$  pin or, when in Read Data Continuous mode, hold SCLK low for 64  $\overline{\text{DRDY}}$  periods.
2. **Configure the registers.** The registers are configured by either writing to them individually or as a group. Software may be configured in either mode. The STOPC command must be sent before register read/write operations to cancel the Read Data Continuous mode.
3. **Verify register data.** The register may be read back for verification of device communications.
4. **Set the data mode.** After register configuration, the device may be configured for Read Data Continuous mode, either by the Read Data Continuous command or configured in Read Data By Register mode using STOPC command.
5. **Synchronize readings.** Whenever SYNC is high, the ADS1282 freely runs the data conversions. To stop and restart the conversions, take SYNC low and then high.
6. **Read data.** If the Read Data Continuous mode is active, the data are read directly after  $\overline{\text{DRDY}}$  falls by applying SCLK pulses. If the Read Data Continuous mode is inactive, the data can only be read by Read Data By Command. The Read Data command must be sent in this mode to read each conversion result (note that  $\overline{\text{DRDY}}$  only asserts after each read data command is sent).

APPLICATION INFORMATION

The ADS1282 is a very high-resolution ADC. Optimal device performance requires giving special attention to the support circuitry and printed circuit board (PCB) design. Locate noisy digital components, such as microcontrollers, oscillators, etc, in an area of the PCB away from the converter or front-end components. Locating the digital components close to the power-entry point keeps the digital current path short and separate from sensitive analog components.

To maintain good total harmonic distortion (THD) and achieve maximum signal-to-noise ratio (SNR), the analog inputs of the ADS1282 must be driven differentially. Also, capacitors located within the signal path should be low-distortion (ceramic COG or equivalent).

A typical geophone application is illustrated in Figure 40. The ADS1282 inputs are protected from transient voltages by diode clamps or gas discharge tubes. For self-tests, a low distortion source is connected to Input 2 (AINP2 and AINN2).

If switching dc/dc supplies are used, check for frequency components of the supply present within the ADS1282 passband. Voltage ripple should be kept as low as possible.

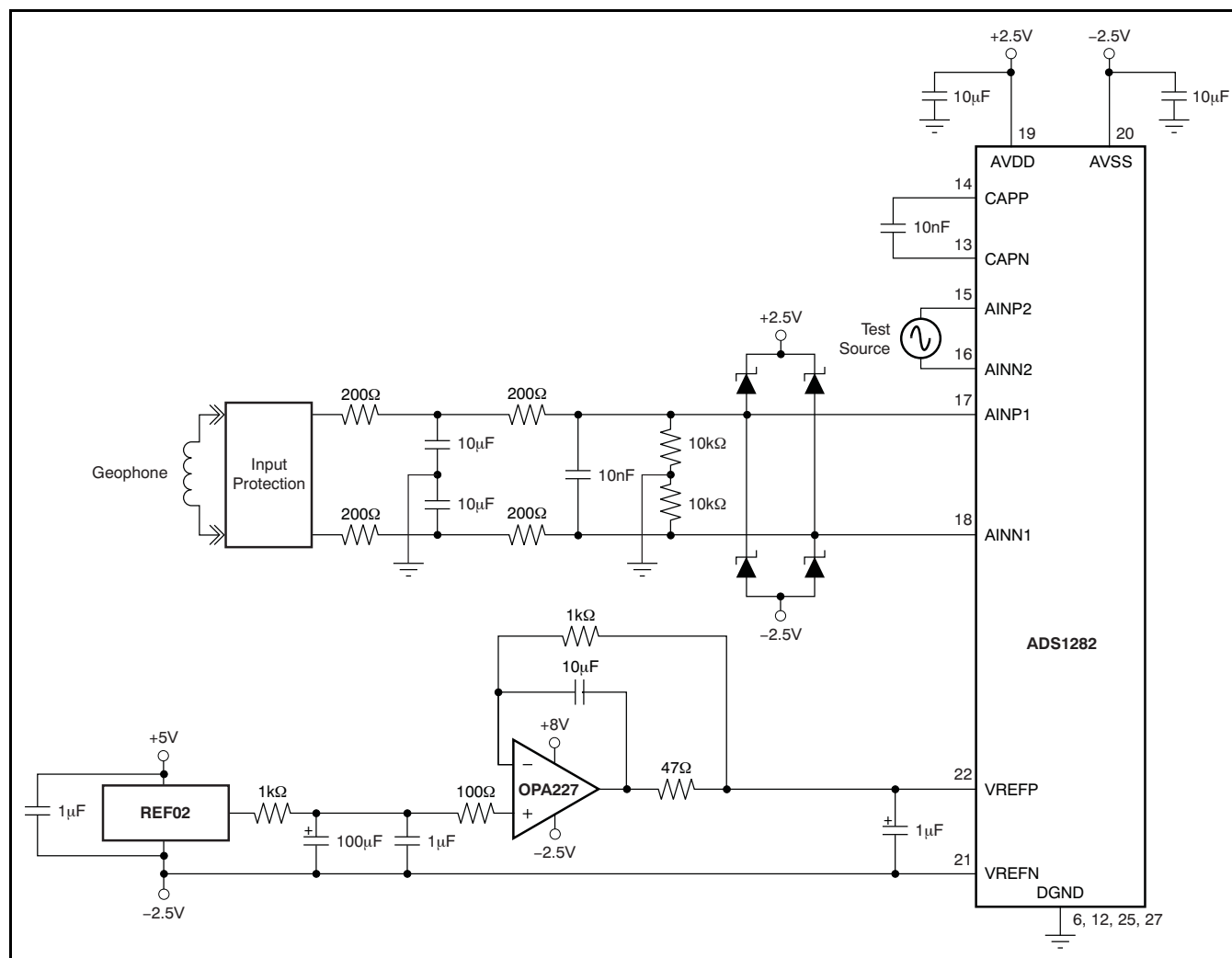


Figure 40. Geophone Interface Application

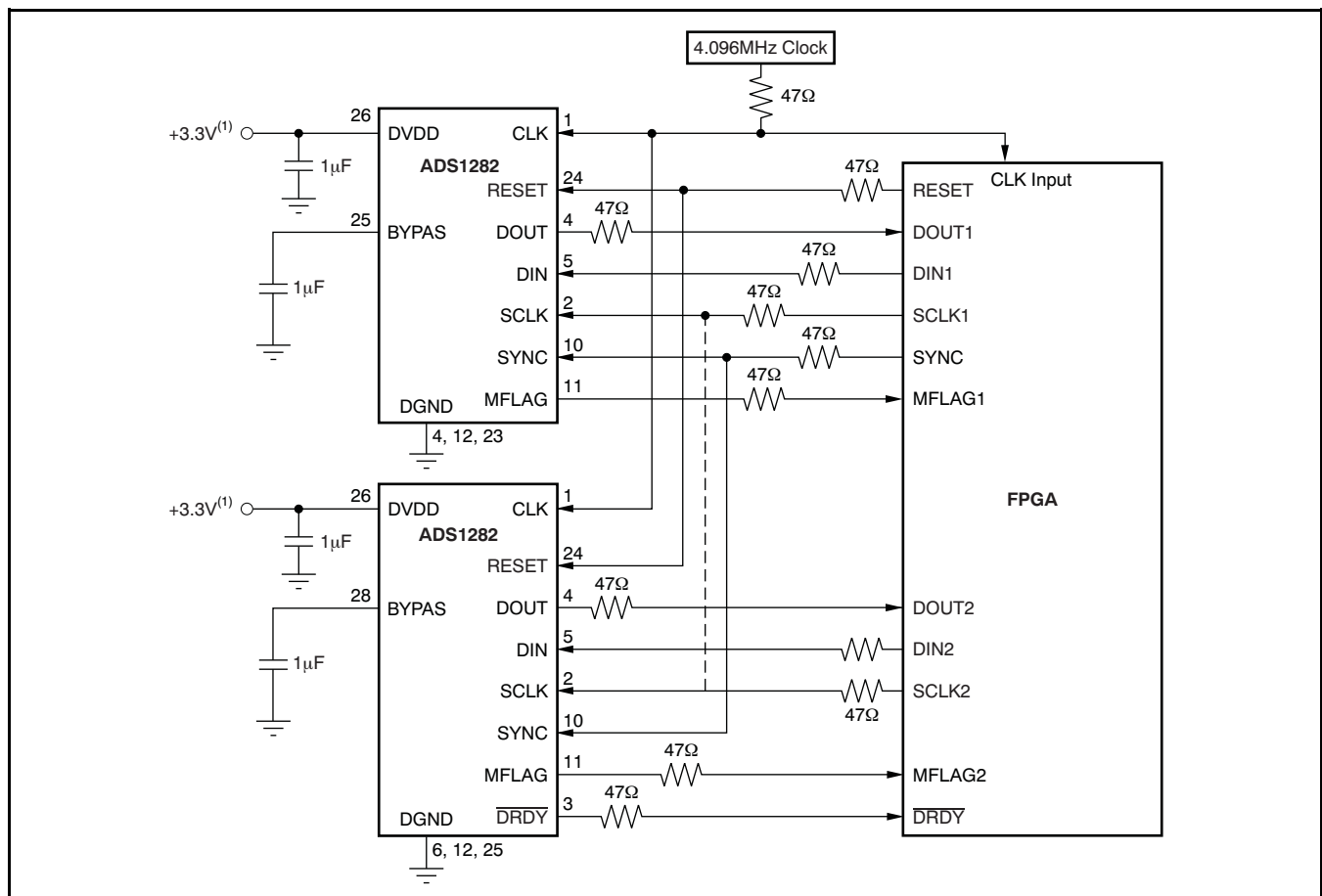
PRODUCT PREVIEW

Figure 41 shows the digital connection to an FPGA (field programmable gate array) device. In this example, two ADS1282s are shown connected. The  $\overline{\text{DRDY}}$  output from each ADS1282 can be used; however, when the devices are synchronized, the  $\overline{\text{DRDY}}$  output from only one device is sufficient. A shared SCLK line between the devices is optional.

For best performance, the FPGA and the ADS1282s should operate from the same clock. Avoid ringing on the digital inputs. 47Ω resistors in series with the digital traces can help to reduce ringing by controlling impedances. Place the resistors at the source (driver) end of the trace. Unused digital inputs should not float; tie them directly to DVDD or GND.

The modulator over-range flag (MFLAG) from each device ties to the FPGA. For synchronization, one SYNC control line connects all ADS1282 devices. The RESET line also connects to all ADS1282 devices.

PRODUCT PREVIEW



NOTE: Dashed lines are optional.

(1) For DVDD < 2.25V, see the [DVDD Power Supply](#) section.

Figure 41. Microcontroller Interface with Dual ADS1282s

APPENDIX

Table 23. FIR Stage Coefficients

| COEFFICIENT     | SECTION 1           | SECTION 2 | SECTION 3  |               | SECTION 4           |               |
|-----------------|---------------------|-----------|--|---------------|---------------------|---------------|
|                 | Scaling = 1/8388608 |           | Scaling = 134217728  |               | Scaling = 134217728 |               |
|                 |                     |           | LINEAR PHASE   | MINIMUM PHASE | LINEAR PHASE        | MINIMUM PHASE |
| b <sub>0</sub>  | -10944              | -774      | -73  | 819           | -132                | 11767         |
| b <sub>1</sub>  | 0                   | 0         | -874   | 8211          | -432                | 133882        |
| b <sub>2</sub>  | 103807              | 8994      | -4648  | 44880         | -75                 | 769961        |
| b <sub>3</sub>  | 0                   | 0         | -16147   | 174712        | 2481                | 2940447       |
| b <sub>4</sub>  | -507903             | -51663    | -41280   | 536821        | 6692                | 8262605       |
| b <sub>5</sub>  | 0                   | 0         | -80934   | 1372637       | 7419                | 17902757      |
| b <sub>6</sub>  | 2512192             | 199523    | -120064  | 3012996       | -266                | 30428735      |
| b <sub>7</sub>  | 4194304             | 0         | -118690  | 5788605       | -10663              | 40215494      |
| b <sub>8</sub>  | 2512192             | -629120   | -18203   | 9852286       | -8280               | 39260213      |
| b <sub>9</sub>  | 0                   | 0         | 224751   | 14957445      | 10620               | 23325925      |
| b <sub>10</sub> | -507903             | 2570188   | 580196   | 20301435      | 22008               | -1757787      |
| b <sub>11</sub> | 0                   | 4194304   | 893263   | 24569234      | 348                 | -21028126     |
| b <sub>12</sub> | 103807              | 2570188   | 891396   | 26260385      | -34123              | -21293602     |
| b <sub>13</sub> | 0                   | 0         | 293598   | 24247577      | -25549              | -3886901      |
| b <sub>14</sub> | -10944              | -629120   | -987253  | 18356231      | 33460               | 14396783      |
| b <sub>15</sub> |                     | 0         | -2635779   | 9668991       | 61387               | 16314388      |
| b <sub>16</sub> |                     | 199523    | -3860322   | 327749        | -7546               | 1518875       |
| b <sub>17</sub> |                     | 0         | -3572512   | -7171917      | -94192              | -12979500     |
| b <sub>18</sub> |                     | -51663    | -822573  | -10926627     | -50629              | -11506007     |
| b <sub>19</sub> |                     | 0         | 4669054  | -10379094     | 101135              | 2769794       |
| b <sub>20</sub> |                     | 8994      | 12153698   | -6505618      | 134826              | 12195551      |
| b <sub>21</sub> |                     | 0         | 19911100   | -1333678      | -56626              | 6103823       |
| b <sub>22</sub> |                     | -774      | 25779390   | 2972773       | -220104             | -6709466      |
| b <sub>23</sub> |                     |           | 27966862   | 5006366       | -56082              | -9882714      |
| b <sub>24</sub> |                     |           | Only half shown;<br>symmetric starting<br>with b <sub>22</sub> . | 4566808       | 263758              | -353347       |
| b <sub>25</sub> |                     |           |  | 2505652       | 231231              | 8629331       |
| b <sub>26</sub> |                     |           |  | 126331        | -215231             | 5597927       |
| b <sub>27</sub> |                     |           |  | -1496514      | -430178             | -4389168      |
| b <sub>28</sub> |                     |           |  | -1933830      | 34715               | -7594158      |
| b <sub>29</sub> |                     |           |  | -1410695      | 580424              | -428064       |
| b <sub>30</sub> |                     |           |  | -502731       | 283878              | 6566217       |
| b <sub>31</sub> |                     |           |  | 245330        | -588382             | 4024593       |
| b <sub>32</sub> |                     |           |  | 565174        | -693209             | -3679749      |
| b <sub>33</sub> |                     |           |  | 492084        | 366118              | -5572954      |
| b <sub>34</sub> |                     |           |  | 231656        | 1084786             | 332589        |
| b <sub>35</sub> |                     |           |  | -9196         | 132893              | 5136333       |
| b <sub>36</sub> |                     |           |  | -125456       | -1300087            | 2351253       |
| b <sub>37</sub> |                     |           |  | -122207       | -878642             | -3357202      |
| b <sub>38</sub> |                     |           |  | -61813        | 1162189             | -3767666      |
| b <sub>39</sub> |                     |           |  | -4445         | 1741565             | 1087392       |
| b <sub>40</sub> |                     |           |  | 22484         | -522533             | 3847821       |
| b <sub>41</sub> |                     |           |  | 22245         | -2490395            | 919792        |
| b <sub>42</sub> |                     |           |  | 10775         | -688945             | -2918303      |

PRODUCT PREVIEW

**Table 23. FIR Stage Coefficients (continued)**

| COEFFICIENT     | SECTION 1           | SECTION 2 | SECTION 3           |               | SECTION 4  |               |
|-----------------|---------------------|-----------|---------------------|---------------|--|---------------|
|                 | Scaling = 1/8388608 |           | Scaling = 134217728 |               | Scaling = 134217728  |               |
|                 |                     |           | LINEAR PHASE        | MINIMUM PHASE | LINEAR PHASE   | MINIMUM PHASE |
| b <sub>43</sub> |                     |           |                     | 940           | 2811738  | -2193542      |
| b <sub>44</sub> |                     |           |                     | -2953         | 2425494  | 1493873       |
| b <sub>45</sub> |                     |           |                     | -2599         | -2338095   | 2595051       |
| b <sub>46</sub> |                     |           |                     | -1052         | -4511116   | -79991        |
| b <sub>47</sub> |                     |           |                     | -43           | 641555   | -2260106      |
| b <sub>48</sub> |                     |           |                     | 214           | 6661730  | -963855       |
| b <sub>49</sub> |                     |           |                     | 132           | 2950811  | 1482337       |
| b <sub>50</sub> |                     |           |                     | 33            | -8538057   | 1480417       |
| b <sub>51</sub> |                     |           |                     |               | -10537298  | -586408       |
| b <sub>52</sub> |                     |           |                     |               | 9818477  | -1497356      |
| b <sub>53</sub> |                     |           |                     |               | 41426374   | -168417       |
| b <sub>54</sub> |                     |           |                     |               | 56835776   | 1166800       |
| b <sub>55</sub> |                     |           |                     |               | Only half shown;<br>symmetric starting<br>with b <sub>53</sub> . | 644405        |
| b <sub>56</sub> |                     |           |                     |               |  | -675082       |
| b <sub>57</sub> |                     |           |                     |               |  | -806095       |
| b <sub>58</sub> |                     |           |                     |               |  | 211391        |
| b <sub>59</sub> |                     |           |                     |               |  | 740896        |
| b <sub>60</sub> |                     |           |                     |               |  | 141976        |
| b <sub>61</sub> |                     |           |                     |               |  | -527673       |
| b <sub>62</sub> |                     |           |                     |               |  | -327618       |
| b <sub>63</sub> |                     |           |                     |               |  | 278227        |
| b <sub>64</sub> |                     |           |                     |               |  | 363809        |
| b <sub>65</sub> |                     |           |                     |               |  | -70646        |
| b <sub>66</sub> |                     |           |                     |               |  | -304819       |
| b <sub>67</sub> |                     |           |                     |               |  | -63159        |
| b <sub>68</sub> |                     |           |                     |               | 205798   |               |
| b <sub>69</sub> |                     |           |                     |               | 124363   |               |
| b <sub>70</sub> |                     |           |                     |               | -107173  |               |
| b <sub>71</sub> |                     |           |                     |               | -131357  |               |
| b <sub>72</sub> |                     |           |                     |               | 31104  |               |
| b <sub>73</sub> |                     |           |                     |               | 107182   |               |
| b <sub>74</sub> |                     |           |                     |               | 15644  |               |
| b <sub>75</sub> |                     |           |                     |               | -71728   |               |
| b <sub>76</sub> |                     |           |                     |               | -36319   |               |
| b <sub>77</sub> |                     |           |                     |               | 38331  |               |
| b <sub>78</sub> |                     |           |                     |               | 38783  |               |
| b <sub>79</sub> |                     |           |                     |               | -13557   |               |
| b <sub>80</sub> |                     |           |                     |               | -31453   |               |
| b <sub>81</sub> |                     |           |                     |               | -1230  |               |
| b <sub>82</sub> |                     |           |                     |               | 20983  |               |
| b <sub>83</sub> |                     |           |                     |               | 7729   |               |
| b <sub>84</sub> |                     |           |                     |               | -11463   |               |
| b <sub>85</sub> |                     |           |                     |               | -8791  |               |
| b <sub>86</sub> |                     |           |                     |               | 4659   |               |

PRODUCT PREVIEW

**Table 23. FIR Stage Coefficients (continued)**

| COEFFICIENT      | SECTION 1           | SECTION 2 | SECTION 3           |               | SECTION 4           |               |
|------------------|---------------------|-----------|---------------------|---------------|---------------------|---------------|
|                  | Scaling = 1/8388608 |           | Scaling = 134217728 |               | Scaling = 134217728 |               |
|                  |                     |           | LINEAR PHASE        | MINIMUM PHASE | LINEAR PHASE        | MINIMUM PHASE |
| b <sub>87</sub>  |                     |           |                     |               |                     | 7126          |
| b <sub>88</sub>  |                     |           |                     |               |                     | -732          |
| b <sub>89</sub>  |                     |           |                     |               |                     | -4687         |
| b <sub>90</sub>  |                     |           |                     |               |                     | -976          |
| b <sub>91</sub>  |                     |           |                     |               |                     | 2551          |
| b <sub>92</sub>  |                     |           |                     |               |                     | 1339          |
| b <sub>93</sub>  |                     |           |                     |               |                     | -1103         |
| b <sub>94</sub>  |                     |           |                     |               |                     | -1085         |
| b <sub>95</sub>  |                     |           |                     |               |                     | 314           |
| b <sub>96</sub>  |                     |           |                     |               |                     | 681           |
| b <sub>97</sub>  |                     |           |                     |               |                     | 16            |
| b <sub>98</sub>  |                     |           |                     |               |                     | -349          |
| b <sub>99</sub>  |                     |           |                     |               |                     | -96           |
| b <sub>100</sub> |                     |           |                     |               |                     | 144           |
| b <sub>101</sub> |                     |           |                     |               |                     | 78            |
| b <sub>102</sub> |                     |           |                     |               |                     | -46           |
| b <sub>103</sub> |                     |           |                     |               |                     | -42           |
| b <sub>104</sub> |                     |           |                     |               |                     | 9             |
| b <sub>105</sub> |                     |           |                     |               |                     | 16            |
| b <sub>106</sub> |                     |           |                     |               |                     | 0             |
| b <sub>107</sub> |                     |           |                     |               |                     | -4            |

$$\text{HPF Gain Error Factor} = \frac{1 - \sqrt{1 - 2 \left[ \frac{\cos \omega_N + \sin \omega_N - 1}{\cos \omega_N} \right]}}{2 - \left[ \frac{\cos \omega_N + \sin \omega_N - 1}{\cos \omega_N} \right]} \quad (13)$$

See the *HPF Stage* section for an example of how to use this equation.

**Table 24. t<sub>DR</sub> Time for Data Ready (Sinc Filter)**

| f <sub>DATA</sub> | f <sub>CLK</sub> <sup>(1)</sup> |
|-------------------|---------------------------------|
| 128k              | 440                             |
| 64k               | 616                             |
| 32k               | 968                             |
| 16k               | 1672                            |
| 8k                | 2824                            |

(1) For SYNC and Wake-Up commands, f<sub>CLK</sub> = number of CLK cycles from next rising CLK edge directly after eighth rising SCLK edge to DRDY falling edge. For Wake-Up command only, subtract two f<sub>CLK</sub> cycles.

Table 24 is referenced by Table 10 and Table 12.

**PACKAGING INFORMATION**

| Orderable Device | Status <sup>(1)</sup> | Package Type | Package Drawing | Pins | Package Qty | Eco Plan <sup>(2)</sup> | Lead/Ball Finish | MSL Peak Temp <sup>(3)</sup> |
|------------------|-----------------------|--------------|-----------------|------|-------------|-------------------------|------------------|------------------------------|
| ADS1282IPW       | PREVIEW               | TSSOP        | PW              | 28   | 50          | TBD                     | Call TI          | Call TI                      |
| ADS1282IPWR      | PREVIEW               | TSSOP        | PW              | 28   | 2000        | TBD                     | Call TI          | Call TI                      |

<sup>(1)</sup> The marketing status values are defined as follows:

**ACTIVE:** Product device recommended for new designs.

**LIFEBUY:** TI has announced that the device will be discontinued, and a lifetime-buy period is in effect.

**NRND:** Not recommended for new designs. Device is in production to support existing customers, but TI does not recommend using this part in a new design.

**PREVIEW:** Device has been announced but is not in production. Samples may or may not be available.

**OBsolete:** TI has discontinued the production of the device.

<sup>(2)</sup> Eco Plan - The planned eco-friendly classification: Pb-Free (RoHS), Pb-Free (RoHS Exempt), or Green (RoHS & no Sb/Br) - please check <http://www.ti.com/productcontent> for the latest availability information and additional product content details.

**TBD:** The Pb-Free/Green conversion plan has not been defined.

**Pb-Free (RoHS):** TI's terms "Lead-Free" or "Pb-Free" mean semiconductor products that are compatible with the current RoHS requirements for all 6 substances, including the requirement that lead not exceed 0.1% by weight in homogeneous materials. Where designed to be soldered at high temperatures, TI Pb-Free products are suitable for use in specified lead-free processes.

**Pb-Free (RoHS Exempt):** This component has a RoHS exemption for either 1) lead-based flip-chip solder bumps used between the die and package, or 2) lead-based die adhesive used between the die and leadframe. The component is otherwise considered Pb-Free (RoHS compatible) as defined above.

**Green (RoHS & no Sb/Br):** TI defines "Green" to mean Pb-Free (RoHS compatible), and free of Bromine (Br) and Antimony (Sb) based flame retardants (Br or Sb do not exceed 0.1% by weight in homogeneous material)

<sup>(3)</sup> MSL, Peak Temp. -- The Moisture Sensitivity Level rating according to the JEDEC industry standard classifications, and peak solder temperature.

**Important Information and Disclaimer:**The information provided on this page represents TI's knowledge and belief as of the date that it is provided. TI bases its knowledge and belief on information provided by third parties, and makes no representation or warranty as to the accuracy of such information. Efforts are underway to better integrate information from third parties. TI has taken and continues to take reasonable steps to provide representative and accurate information but may not have conducted destructive testing or chemical analysis on incoming materials and chemicals. TI and TI suppliers consider certain information to be proprietary, and thus CAS numbers and other limited information may not be available for release.

In no event shall TI's liability arising out of such information exceed the total purchase price of the TI part(s) at issue in this document sold by TI to Customer on an annual basis.



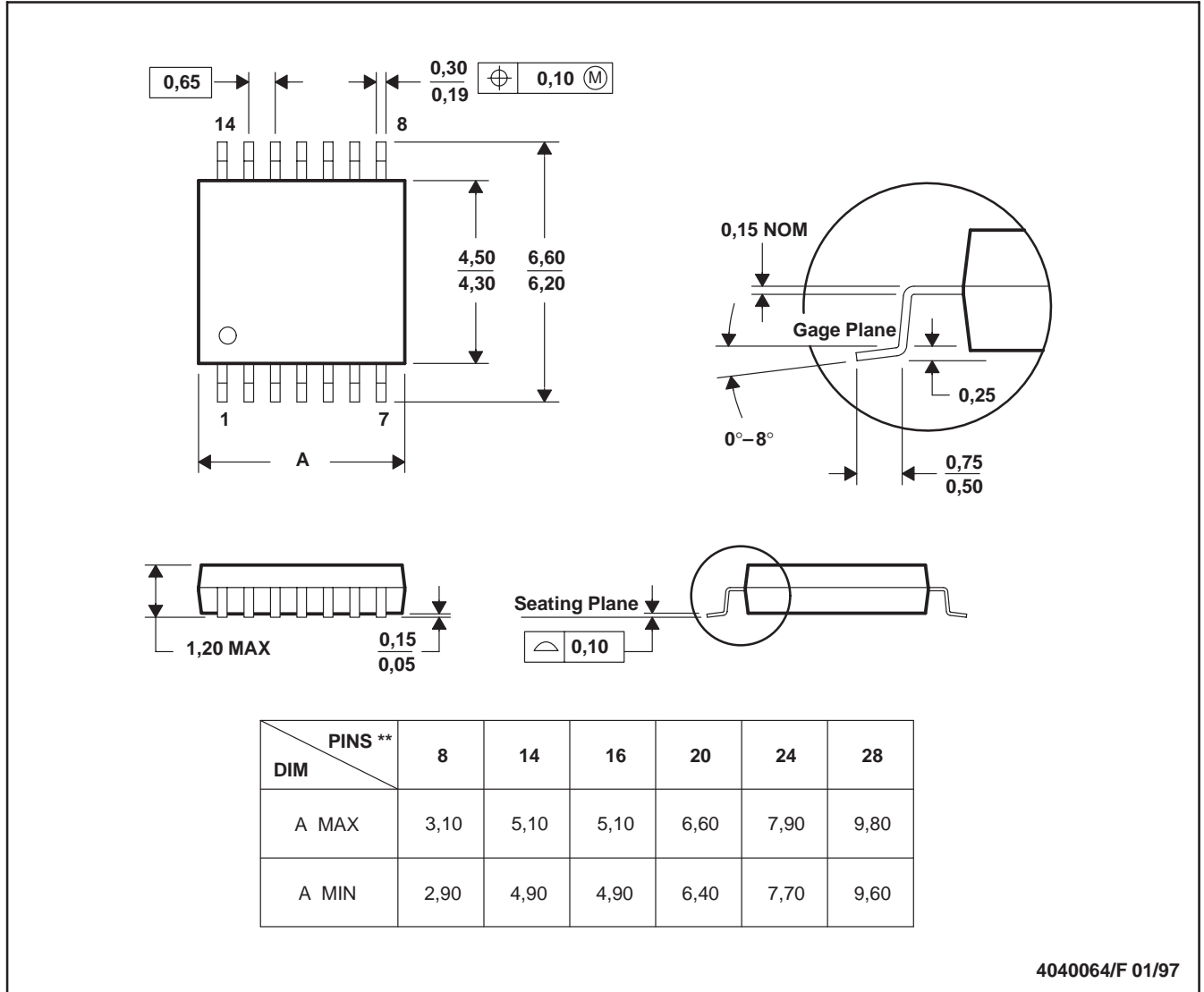
# MECHANICAL DATA

MTSS001C – JANUARY 1995 – REVISED FEBRUARY 1999

**PW (R-PDSO-G\*\*)**

**PLASTIC SMALL-OUTLINE PACKAGE**

14 PINS SHOWN



- NOTES: A. All linear dimensions are in millimeters.  
 B. This drawing is subject to change without notice.  
 C. Body dimensions do not include mold flash or protrusion not to exceed 0,15.  
 D. Falls within JEDEC MO-153

## IMPORTANT NOTICE

Texas Instruments Incorporated and its subsidiaries (TI) reserve the right to make corrections, modifications, enhancements, improvements, and other changes to its products and services at any time and to discontinue any product or service without notice. Customers should obtain the latest relevant information before placing orders and should verify that such information is current and complete. All products are sold subject to TI's terms and conditions of sale supplied at the time of order acknowledgment.

TI warrants performance of its hardware products to the specifications applicable at the time of sale in accordance with TI's standard warranty. Testing and other quality control techniques are used to the extent TI deems necessary to support this warranty. Except where mandated by government requirements, testing of all parameters of each product is not necessarily performed.

TI assumes no liability for applications assistance or customer product design. Customers are responsible for their products and applications using TI components. To minimize the risks associated with customer products and applications, customers should provide adequate design and operating safeguards.

TI does not warrant or represent that any license, either express or implied, is granted under any TI patent right, copyright, mask work right, or other TI intellectual property right relating to any combination, machine, or process in which TI products or services are used. Information published by TI regarding third-party products or services does not constitute a license from TI to use such products or services or a warranty or endorsement thereof. Use of such information may require a license from a third party under the patents or other intellectual property of the third party, or a license from TI under the patents or other intellectual property of TI.

Reproduction of TI information in TI data books or data sheets is permissible only if reproduction is without alteration and is accompanied by all associated warranties, conditions, limitations, and notices. Reproduction of this information with alteration is an unfair and deceptive business practice. TI is not responsible or liable for such altered documentation. Information of third parties may be subject to additional restrictions.

Resale of TI products or services with statements different from or beyond the parameters stated by TI for that product or service voids all express and any implied warranties for the associated TI product or service and is an unfair and deceptive business practice. TI is not responsible or liable for any such statements.

TI products are not authorized for use in safety-critical applications (such as life support) where a failure of the TI product would reasonably be expected to cause severe personal injury or death, unless officers of the parties have executed an agreement specifically governing such use. Buyers represent that they have all necessary expertise in the safety and regulatory ramifications of their applications, and acknowledge and agree that they are solely responsible for all legal, regulatory and safety-related requirements concerning their products and any use of TI products in such safety-critical applications, notwithstanding any applications-related information or support that may be provided by TI. Further, Buyers must fully indemnify TI and its representatives against any damages arising out of the use of TI products in such safety-critical applications.

TI products are neither designed nor intended for use in military/aerospace applications or environments unless the TI products are specifically designated by TI as military-grade or "enhanced plastic." Only products designated by TI as military-grade meet military specifications. Buyers acknowledge and agree that any such use of TI products which TI has not designated as military-grade is solely at the Buyer's risk, and that they are solely responsible for compliance with all legal and regulatory requirements in connection with such use.

TI products are neither designed nor intended for use in automotive applications or environments unless the specific TI products are designated by TI as compliant with ISO/TS 16949 requirements. Buyers acknowledge and agree that, if they use any non-designated products in automotive applications, TI will not be responsible for any failure to meet such requirements.

Following are URLs where you can obtain information on other Texas Instruments products and application solutions:

| <b>Products</b>       |  | <b>Applications</b> |  |
|-----------------------|--|---------------------|--|
| Amplifiers            | <a href="http://amplifier.ti.com">amplifier.ti.com</a>             | Audio               | <a href="http://www.ti.com/audio">www.ti.com/audio</a>                   |
| Data Converters       | <a href="http://dataconverter.ti.com">dataconverter.ti.com</a>     | Automotive          | <a href="http://www.ti.com/automotive">www.ti.com/automotive</a>         |
| DSP                   | <a href="http://dsp.ti.com">dsp.ti.com</a>                         | Broadband           | <a href="http://www.ti.com/broadband">www.ti.com/broadband</a>           |
| Interface             | <a href="http://interface.ti.com">interface.ti.com</a>             | Digital Control     | <a href="http://www.ti.com/digitalcontrol">www.ti.com/digitalcontrol</a> |
| Logic                 | <a href="http://logic.ti.com">logic.ti.com</a>                     | Military            | <a href="http://www.ti.com/military">www.ti.com/military</a>             |
| Power Mgmt            | <a href="http://power.ti.com">power.ti.com</a>                     | Optical Networking  | <a href="http://www.ti.com/opticalnetwork">www.ti.com/opticalnetwork</a> |
| Microcontrollers      | <a href="http://microcontroller.ti.com">microcontroller.ti.com</a> | Security            | <a href="http://www.ti.com/security">www.ti.com/security</a>             |
| RFID                  | <a href="http://www.ti-rfid.com">www.ti-rfid.com</a>               | Telephony           | <a href="http://www.ti.com/telephony">www.ti.com/telephony</a>           |
| Low Power<br>Wireless | <a href="http://www.ti.com/lpw">www.ti.com/lpw</a>                 | Video & Imaging     | <a href="http://www.ti.com/video">www.ti.com/video</a>                   |
|                       |  | Wireless            | <a href="http://www.ti.com/wireless">www.ti.com/wireless</a>             |