

# SMD 303.825MHz SAW FILTER

AFS303.825E

APPLICATION: Automotive Electronics/Remote Control



5 x 5 x 1.5mm

## STANDARD SPECIFICATIONS:

| CHARACTERISTICS                 | UNIT   | MIN.                 | TYP.    | MAX.   |
|---------------------------------|--------|----------------------|---------|--------|
| Center Frequency Fc             | MHz    | 303.72               | 303.825 | 303.83 |
| Bandwidth                       | kHz    | 500                  | -       | 800    |
| Insertion Loss @ Passband       | dB     | -                    | 1.7     | 3      |
| Ripple @ Passband               | dB     | -                    | -       | -      |
| Relative Attenuation            |        |                      |         |        |
| Fc - 21.4MHz                    | dB     | 40                   | 50      | -      |
| Fc - 10.7MHz                    | dB     | 15                   | 40      | -      |
| F where 10MHz < F < Fc -21.4MHz | dB     | 30                   | 80      | -      |
| Fc+21.4MHz<F<1000MHz            |        |                      |         | -      |
| DC Voltage                      | V      | 10                   |         |        |
| AC Voltage                      | V      | 10V(50Hz/60Hz)       |         |        |
| Source Power                    | dBm    | 0                    |         |        |
| Operating Temperature           | °C     | -40°C to +85°C       |         |        |
| Storage Temperature             | °C     | -10-45°C to +85°C 10 |         |        |
| Frequency aging                 | ppm/yr |                      | -       |        |
| External impedance              | nH     |                      | 62      |        |
| Series inductance L             |        |                      |         |        |
| Series capacitance              | pF     |                      | 10      |        |

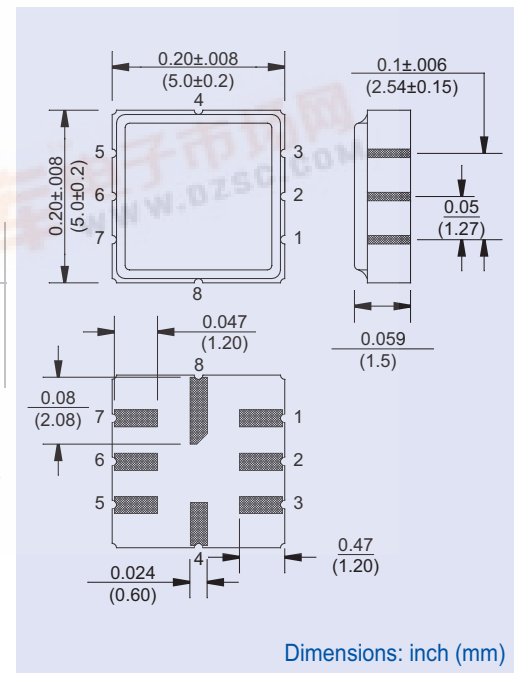
Electrostatic Sensitive Device. Handle with precaution.

## MARKING:

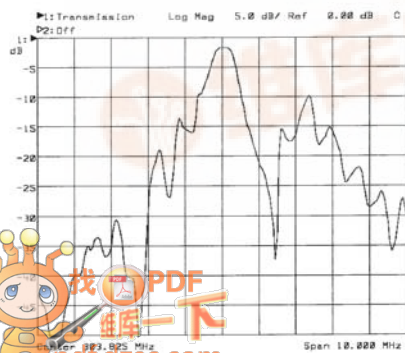
- 303.82 (303.825 Frequency in MHz)
- AF ZYX (ZY: Date code Z for month from A to L; Y for year, i.e. 4 for 2004 X: Traceability code)

| PIN NO. | CONNECTIONS |
|---------|-------------|
| 1       | Input GND   |
| 2       | Input       |
| 3       | GND         |
| 4       | Case GND    |
| 5       | Output      |
| 6       | Output GND  |
| 7       | GND         |
| 8       | Case GND    |

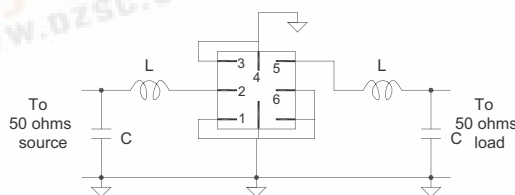
## OUTLINE DRAWING:



## FREQUENCY RESPONSE:



## TEST CIRCUIT:



Please refer to ABRACON's Chip Inductor Series AISC-0603 for the L's.

