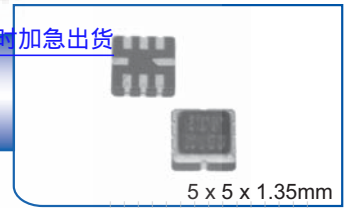


SMD 315.0 MHz SAW FILTER

AFS315E

APPLICATION: Automotive Electronics/Remote Control



STANDARD SPECIFICATIONS:

CHARACTERISTICS	UNIT	MIN.	TYP.	MAX.
Center Frequency Fc	MHz	-	315.02	-
Bandwidth	KHz	-	600	-
Insertion Loss @ Passband	dB	-	3.0	4.5
Ripple @ Passband	dB	-	2.0	6.0
Relative Attenuation				
10.0 ~ 270.0 MHz	dB	45	50	-
270.0 ~ 309.0 MHz	dB	35	40	-
309.0 ~ 314.0 MHz	dB	15	20	-
316.0 ~ 335.0 MHz	dB	10	15	-
335.0 ~ 400 MHz	dB	35	40	-
400.0 ~ 1000.0 MHz	dB	45	50	-
DC Voltage	V	0		
Source Power	dBm	0		
Operating Temperature	°C	-45°C to +120°C		
Storage Temperature	°C	-45°C to +120°C		
Terminating Impedance @ Input	Ω // pF	950 // 3.18		
Terminating Impedance @ Output	Ω // pF	960 // 3.14		

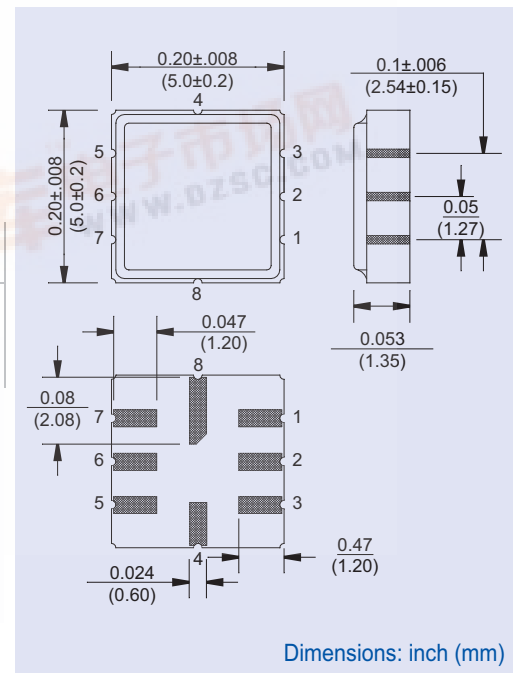
Electrostatic Sensitive Device. Handle with precaution.

MARKING:

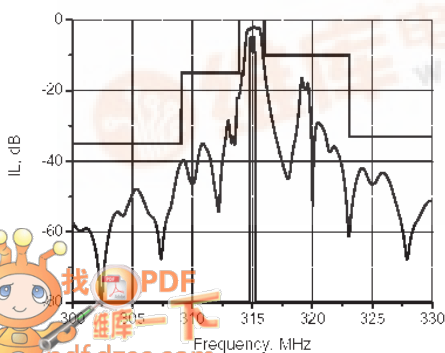
- 315.00 (315 Frequency in MHz)
- AF ZYX (ZY: Date code Z for month from A to L; Y for year, i.e. 4 for 2004; X: Traceability code)

PIN NO.	CONNECTIONS
1	Input
2	Input- or GND
3	GND
4	Case GND
5	Output
6	Output- or GND
7	GND
8	Case GND

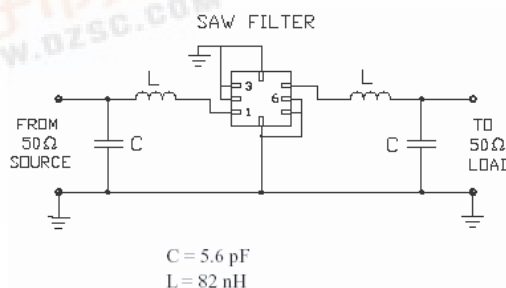
OUTLINE DRAWING:



FREQUENCY RESPONSE:



TEST CIRCUIT:



Dimensions: inch (mm)