



2-PHASE HALF-WAVE HIGH VOLTAGE MOTOR PRE-DRIVER

AM4406

General Description

The AM4406 is a 2-phase, half-wave motor predriver fabricated for fan motors. This IC is equipped with lock shutdown, automatic restart and rotation detection (RD) function. The lock shutdown function turns off the output current when the motor is under lock condition. And when the motor is unlocked, the IC will automatically restart and allow DC fan to run. In addition, the RD function is to detect the motor status.

The AM4406 is available in SOIC-8 package.

Features

- Hall Inputs with a Hysteresis
- Lock Shutdown and Automatic Restart
- Rotation Detection (RD) Output
- Supply Voltage: 4 to 28V
- Output Current: 70mA Max.
- Operating Temperature: -30 to 85°C

Applications

- High Voltage, High Current Brushless DC Fan
- Power Supply and Switchboards
- Communications Facilities
- Industrial Equipment



Figure 1. Package Type of AM4406





2-PHASE HALF-WAVE HIGH VOLTAGE MOTOR PRE-DRIVER

AM4406

Pin Configuration

M Package
(SOIC-8)

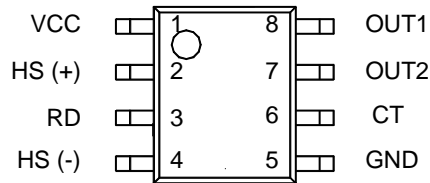


Figure 2. Pin Configuration of AM4406 (Top View)

Pin Description

| Pin Number | Pin Name | Function |
|------------|----------|--------------------|
| 1 | VCC | Power supply |
| 2 | HS (+) | Hall input (+) |
| 3 | RD | Rotation detection |
| 4 | HS (-) | Hall input (-) |
| 5 | GND | Ground |
| 6 | CT | Timing capacitor |
| 7 | OUT2 | Driver output 2 |
| 8 | OUT1 | Driver output 1 |



2-PHASE HALF-WAVE HIGH VOLTAGE MOTOR PRE-DRIVER

AM4406

Functional Block Diagram

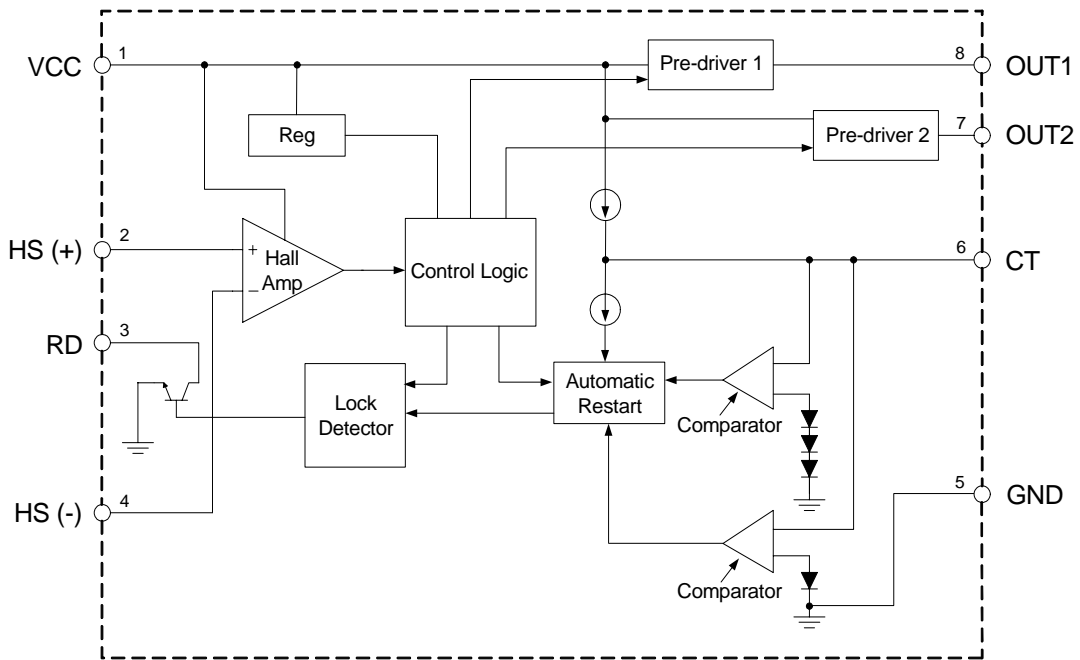
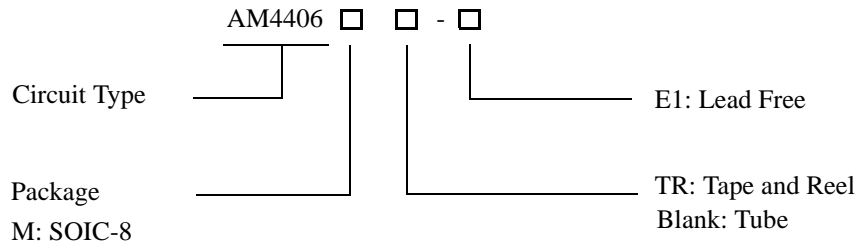


Figure 3. Functional Block Diagram of AM4406



2-PHASE HALF-WAVE HIGH VOLTAGE MOTOR PRE-DRIVER AM4406

Ordering Information



| Package | Temperature Range | Part Number | Marking ID | Packing Type |
|---------|-------------------|--------------|------------|--------------|
| SOIC-8 | -30 to 85°C | AM4406M-E1 | AM4406M | Tube |
| | | AM4406MTR-E1 | AM4406M | Tape & Reel |

BCD Semiconductor's Pb-free products, as designated with "E1" suffix in the part number, are RoHS compliant.

**2-PHASE HALF-WAVE HIGH VOLTAGE MOTOR PRE-DRIVER****AM4406****Absolute Maximum Ratings (Note 1)**

| Parameter | Symbol | Value | Unit |
|---------------------------|-----------|--------------|------|
| Supply Voltage | V_{CC} | 30 | V |
| Output Current | I_{OUT} | 70 | mA |
| Power Dissipation | P_D | 550 (Note 2) | mW |
| Storage Temperature Range | T_{STG} | -55 to 125 | °C |
| ESD (Human Body Model) | ESD | 3000 | V |
| ESD (Machine Model) | ESD | 300 | V |

Note 1: Stresses greater than those listed under "Absolute Maximum Ratings" may cause permanent damage to the device. These are stress ratings only, and functional operation of the device at these or any other conditions beyond those indicated under "Recommended Operating Conditions" is not implied. Exposure to "Absolute Maximum Ratings" for extended periods may affect device reliability.

Note 2: Reduced by 5.5mW/°C when T_A is over 25°C.

Recommended Operating Conditions

| Parameter | Symbol | Min | Max | Unit |
|---------------------------------|--------------|-----|--------------|------|
| Supply Voltage | V_{CC} | 4 | 28 | V |
| Hall Input Voltage (+) (Note 3) | $V_{HS (+)}$ | 1.0 | $V_{CC}-0.5$ | V |
| Hall Input Voltage (-) (Note 3) | $V_{HS (-)}$ | 1.0 | $V_{CC}-0.5$ | V |
| Operating Temperature | T_A | -30 | 85 | °C |

Note 3: Hall input voltage range includes the amplitude of signal.

**2-PHASE HALF-WAVE HIGH VOLTAGE MOTOR PRE-DRIVER****AM4406****Electrical Characteristics**(V_{CC}=12V, T_A=25°C, unless otherwise specified.)

| Parameter | Symbol | Conditions | Min | Typ | Max | Unit |
|-------------------------------------|----------------------|--|------|------|------|------|
| Supply Current | I _{CC} | No load | | 3.2 | 5.0 | mA |
| Hall Amplifier Input Hysteresis (+) | V _{HYS} (+) | Zero to peak including offset and hysteresis | 3 | | 15 | mV |
| Hall Amplifier Input Hysteresis (-) | V _{HYS} (-) | Zero to peak including offset and hysteresis | -3 | | -15 | mV |
| CT Charge Current | I _{CHG} | V _{CT} =1.5V | 2 | 3.45 | 5.25 | μA |
| CT Discharge Current | I _{DHG} | V _{CT} =1.5V | 0.35 | 0.8 | 1.45 | μA |
| CT Charge and Discharge Ratio | R _{CD} | I _{CHG} /I _{DHG} | 3 | 4.5 | 8 | |
| CT Clamp Voltage | V _{CL} | | 2.2 | 2.6 | 3 | V |
| CT Comparator Voltage | V _{CP} | | 0.4 | 0.6 | 0.8 | V |
| OUT1 High Level Voltage | V _{OH1} | I _{OUT1} =10mA | 10 | 10.5 | | V |
| OUT2 High Level Voltage | V _{OH2} | I _{OUT2} =10mA | 10 | 10.5 | | V |
| RD Output Low Level Voltage | V _{RDL} | I _{RD} =5mA | | 0.2 | 0.5 | V |
| RD Current Capacity | I _{RD} | V _{RD} =2V | 8 | 18 | | mA |



2-PHASE HALF-WAVE HIGH VOLTAGE MOTOR PRE-DRIVER AM4406

Typical Performance Characteristics

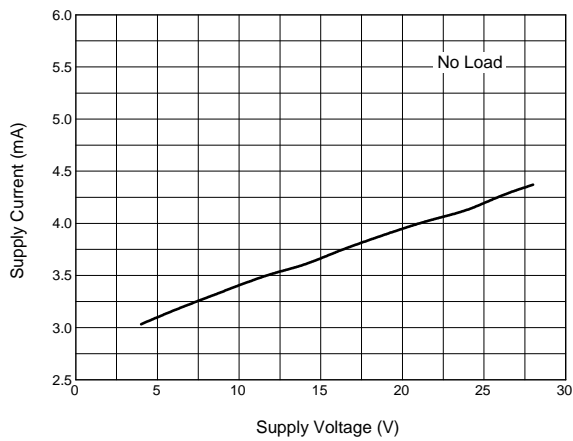


Figure 4. Supply Current vs. Supply Voltage

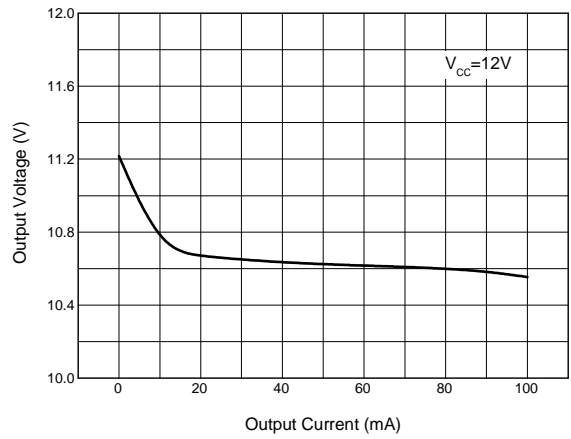


Figure 5. Output Voltage vs. Output Current

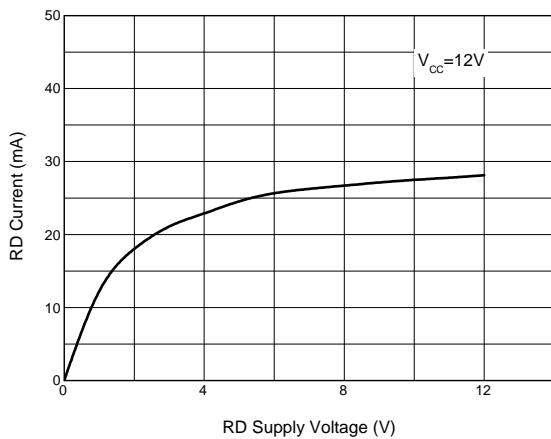


Figure 6. RD Current vs. RD Supply Voltage

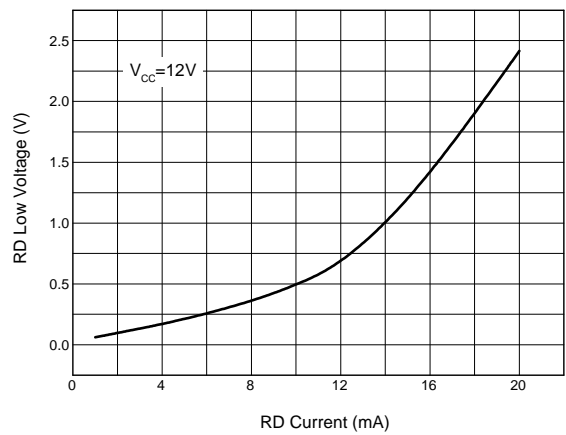


Figure 7. RD Low Voltage vs. RD Current



2-PHASE HALF-WAVE HIGH VOLTAGE MOTOR PRE-DRIVER

AM4406

Typical Performance Characteristics (Continued)

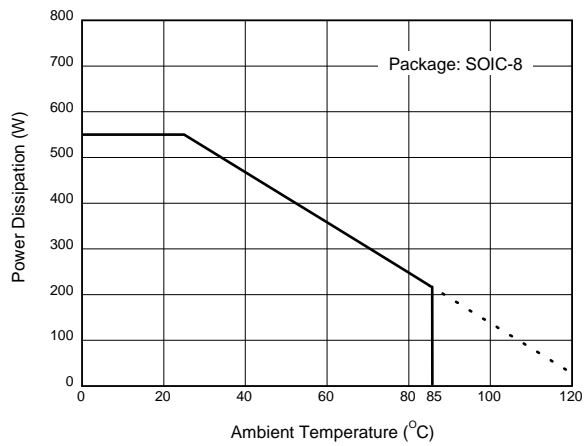
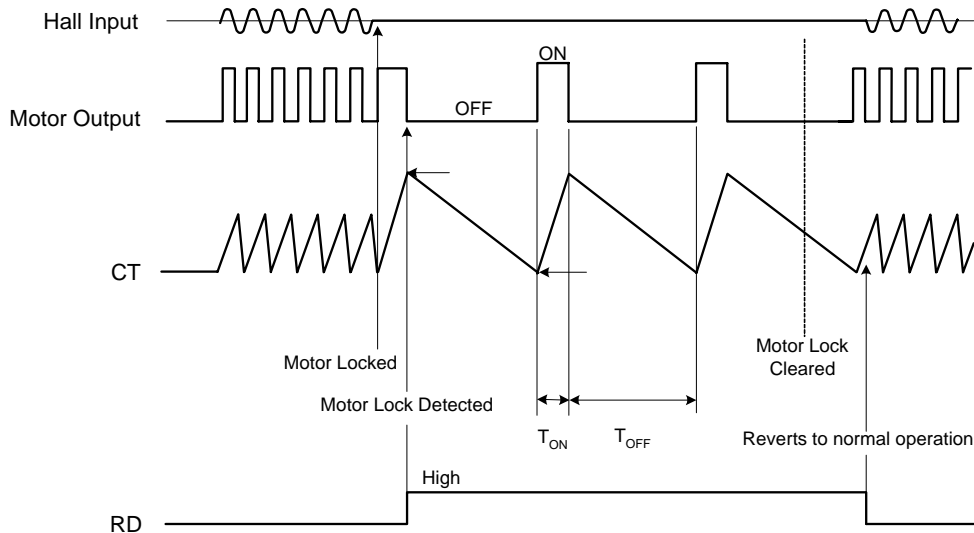


Figure 8. Power Dissipation vs. Ambient Temperature



2-PHASE HALF-WAVE HIGH VOLTAGE MOTOR PRE-DRIVER AM4406

Operating Diagram



Note 4: Automatic restart is performed in the following manner. A motor lock condition is detected when the hall signal stops switching. The output is ON when CT pin is being charged. C2 is the external capacitor of the CT pin. Output ON time and OFF time are determined by the capacitance of C2.

Note 5: RD pin is ON during normal operation, and OFF when the motor is locked. It is an open collector output pin.

$$T_{ON} = \frac{C2 * (V_{CL} - V_{CP})}{I_{CHG}} (\text{Sec.})$$

$$T_{OFF} = \frac{C2 * (V_{CL} - V_{CP})}{I_{DHG}} (\text{Sec.})$$

Note 6: The RD pin may maintain HIGH level for a few hundred milliseconds when the power is turn on.

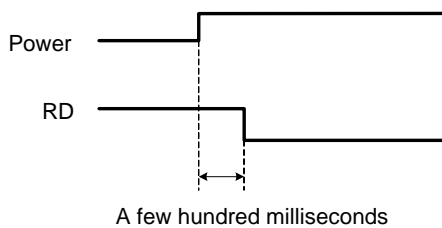


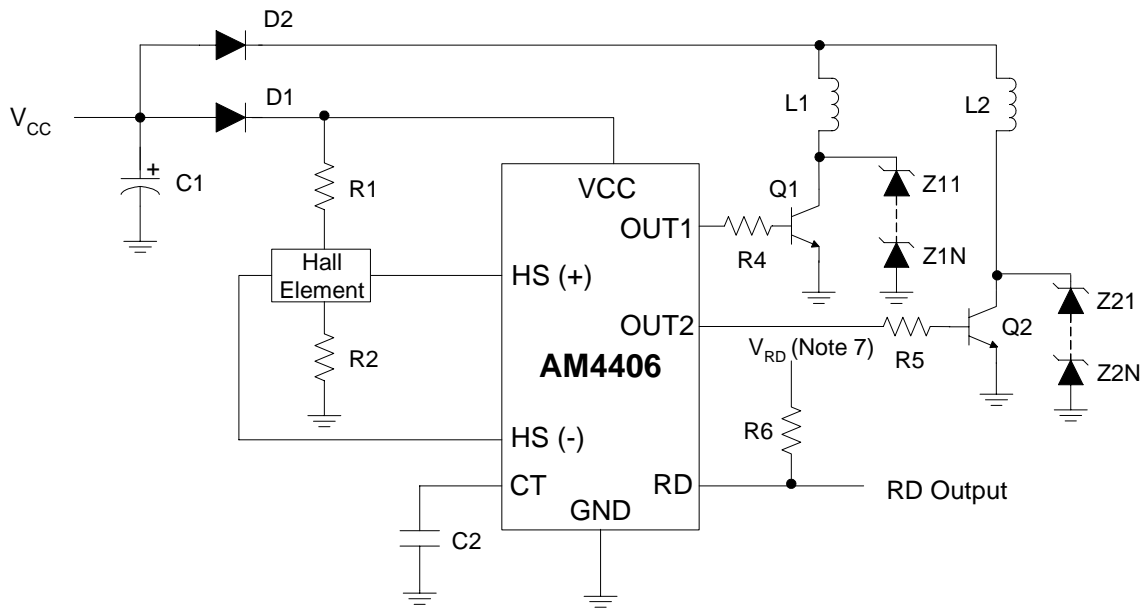
Figure 9. Control Timing Diagram of AM4406



2-PHASE HALF-WAVE HIGH VOLTAGE MOTOR PRE-DRIVER

AM4406

Typical Application



Note 7: V_{RD} should be equal or smaller than V_{CC} .

Figure 10. Typical Application of AM4406

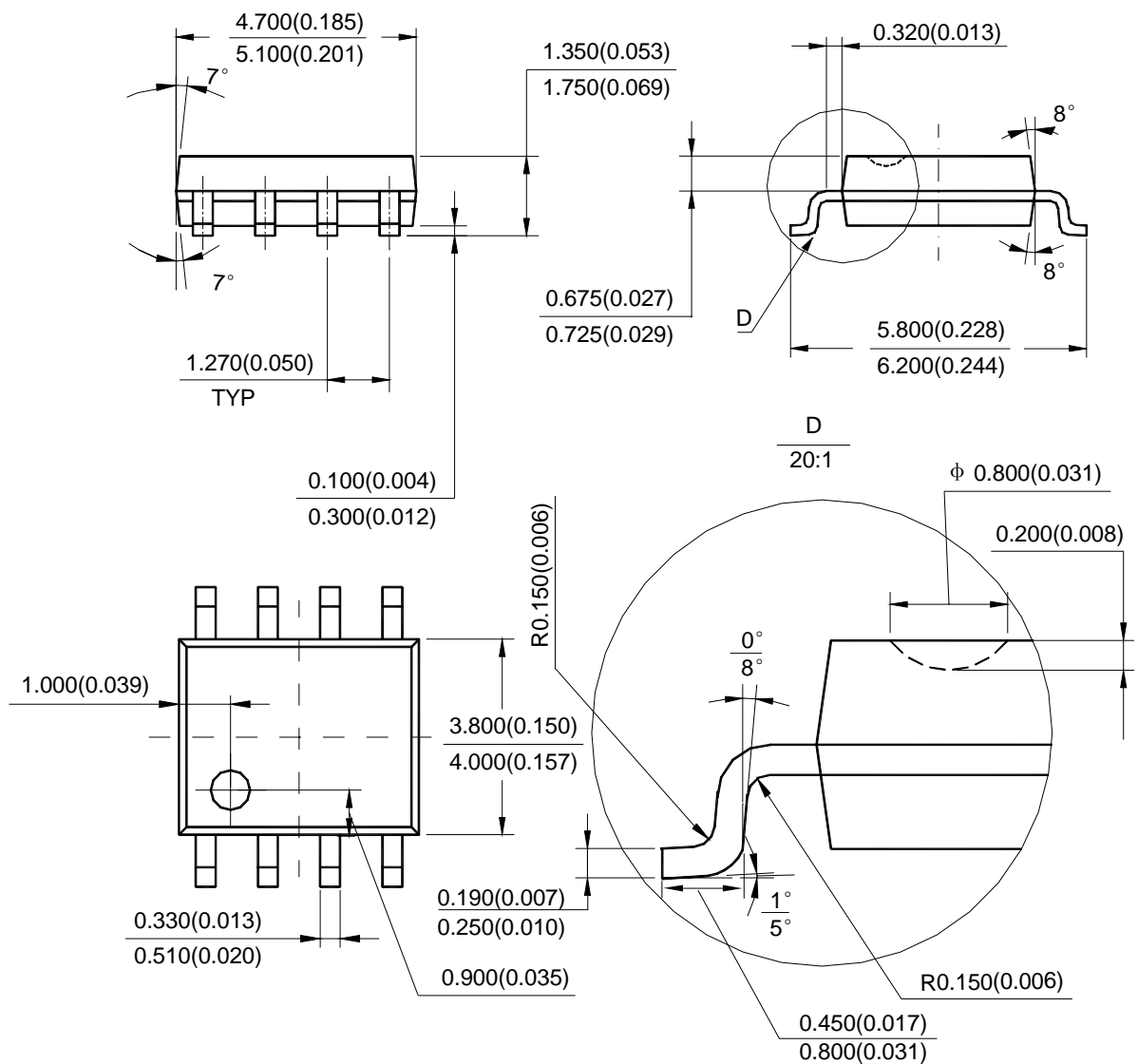


2-PHASE HALF-WAVE HIGH VOLTAGE MOTOR PRE-DRIVER **AM4406**

Mechanical Dimensions

SOIC-8

Unit: mm(inch)





BCD Semiconductor Manufacturing Limited

<http://www.bcdsemi.com>

IMPORTANT NOTICE

BCD Semiconductor Manufacturing Limited reserves the right to make changes without further notice to any products or specifications herein. BCD Semiconductor Manufacturing Limited does not assume any responsibility for use of any its products for any particular purpose, nor does BCD Semiconductor Manufacturing Limited assume any liability arising out of the application or use of any its products or circuits. BCD Semiconductor Manufacturing Limited does not convey any license under its patent rights or other rights nor the rights of others.

MAIN SITE

BCD Semiconductor Manufacturing Limited
- Wafer Fab
Shanghai SIM-BCD Semiconductor Manufacturing Limited
800, Yi Shan Road, Shanghai 200233, China
Tel: +86-21-6485 1491, Fax: +86-21-5450 0008

BCD Semiconductor Manufacturing Limited
- IC Design Group
Advanced Analog Circuits (Shanghai) Corporation
8F, Zone B, 900, Yi Shan Road, Shanghai 200233, China
Tel: +86-21-6495 9539, Fax: +86-21-6485 9673

REGIONAL SALES OFFICE

Shenzhen Office
Shanghai SIM-BCD Semiconductor Manufacturing Co., Ltd. Shenzhen Office
Advanced Analog Circuits (Shanghai) Corporation Shenzhen Office
Room E, 5F, Noble Center, No.1006, 3rd Fuzhong Road, Futian District, Shenzhen 518026, China
Tel: +86-755-8826 7951
Fax: +86-755-8826 7865

Taiwan Office
BCD Semiconductor (Taiwan) Company Limited
4F, 298-1, Rui Guang Road, Nei-Hu District, Taipei,
Taiwan
Tel: +886-2-2656 2808
Fax: +886-2-2656 2806

USA Office
BCD Semiconductor Corporation
30920 Huntwood Ave. Hayward,
CA 94544, U.S.A
Tel: +1-510-324-2988
Fax: +1-510-324-2788