



## VDSL Splitter Protection Module APC77131



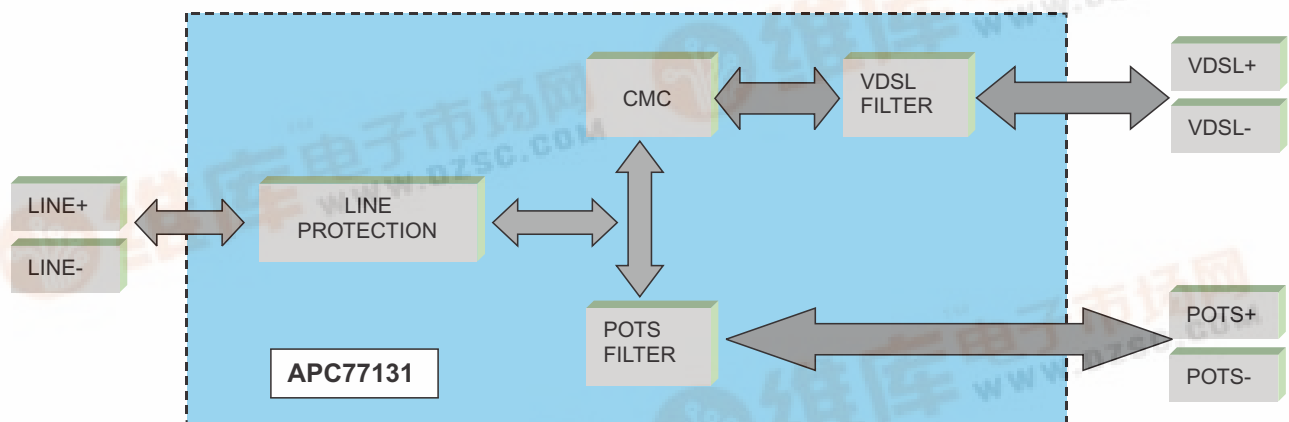
### FEATURES

- Designed for Broadcom BCM6315 and BCM6020 chipset
- Includes Line Protection (voltage and current) / VDSL filter / POTS Splitter functions
- Minimum surface mount footprint for increased line card density

### ELECTRICAL SPECIFICATIONS@25°C

Description	Passband Freq	Stopband Freq	Attenuation min	Impedance
POTS LPF	DC to 18 KHz	130 KHz >	50dB	600R
VDSL HPF	90 KHz >	DC to 15 KHz	50dB	100R

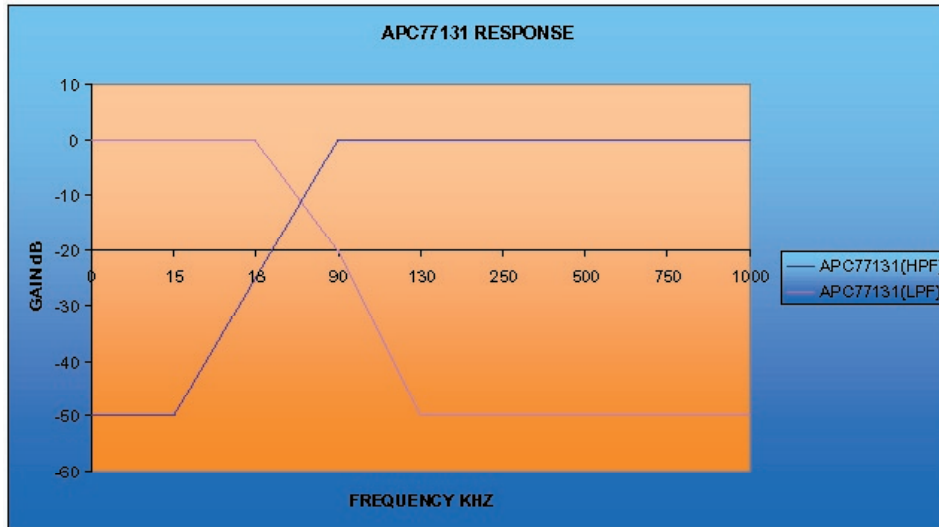
### BLOCK DIAGRAM



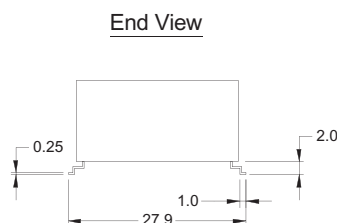
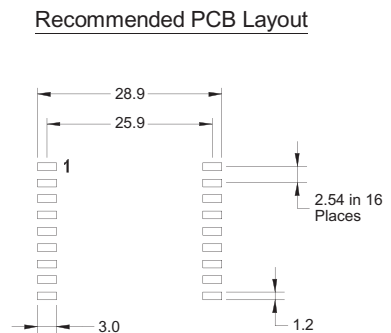
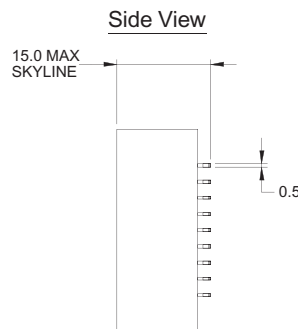
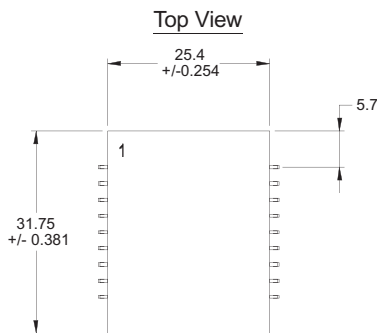


## VDSL Splitter Protection Module APC77131

### FREQUENCY ALLOCATION



### MECHANICAL



Pin No.	Signal	Pin No.	Signal
1	RING	10	N/C
2	FGND	11	N/C
3	FGND	12	N/C
4	TIP	13	N/C
5	N/C	14	N/C
6	POTS P	15	N/C
7	N/C	16	VDSL N
8	N/C	17	N/C
9	POTS N	18	VDSL P

©2003 Bel Fuse Inc. Specifications subject to change without notice. 05.20.03

#### CORPORATE

**Bel Fuse Inc.**  
 206 Van Vorst Street  
 Jersey City, NJ 07302  
 Tel 201-432-0463  
 Fax 201-432-9542  
 www.belfuse.com

#### FAR EAST

**Bel Fuse Ltd.**  
 8F / 8 Luk Hop Street  
 San Po Kong  
 Kowloon, Hong Kong  
 Tel 852-2328-5515  
 Fax 852-2352-3706  
 www.belfuse.com

#### EUROPE

**Bel Stewart Connector**  
 45/46 Riverside  
 Medway City Estate  
 Rochester, Kent ME2 4DP U.K.  
 Tel 44-1634-722890  
 Fax 44-1634-716677  
 www.belfuse.com