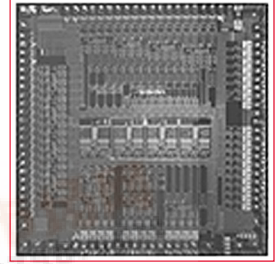




BCM5421 PRODUCT Brief



BCM5421 10/100/1000BASE-T GIGABIT COPPER TRANSCEIVER

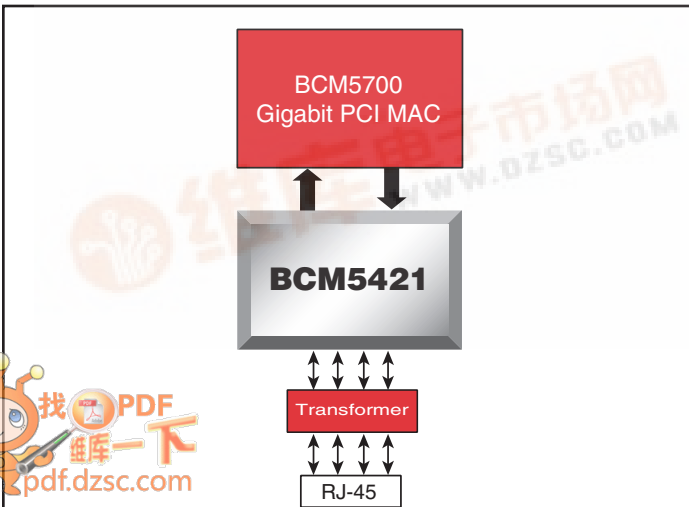
BCM5421 FEATURES

- Fully integrated 10BASE-T/100BASE-TX/1000BASE-T Gigabit Ethernet transceiver
- On-chip low-voltage regulators
- Fully compliant with IEEE 802.3, 802.3u, and 802.3ab standards
- 0.13um CMOS — low-power and cost
- Low power
 - 1W per port
 - Wake on LAN support
 - Advanced power management
- Low EMI emissions
- Ethernet@WireSpeed™ logic automatically selects the maximum speed based on channel conditions
- Cable plant diagnostic
 - Cable plant analyzer function detects cable plant impairments
 - Link quality indication LED
 - Automatic detection and correction of wiring pair swaps, pair skew, and pair polarity
 - Automatic MDI/MDIX crossover at all speeds
- Robust CESD tolerance
- Support for jumbo packets up to 9 KB
- IEEE 1149.1 (JTAG) boundary scan
- MII, GMII, TBI, RGMII, and RTBI interface options
- 117 BGA and 128 MQFP

SUMMARY OF BENEFITS

- Provides interoperability with IEEE standard devices operating at 10, 100, and 1000 Mbps at half- and full-duplex.
- Lowers system cost and reduces solution footprint.
- Requires no airflow or heatsink.
- Provides compliance with PCI 2.2 and PC99/PC2000.
- Reduces system design constraints to meet EMI emissions standards.
- Automatically configures the link to support the highest possible speed based on link partner capability and characteristics of the channel.
- Cable diagnostic function characterizes cable plant condition and immediately indicates cabling issues.
 - Prevents erroneous equipment return due to bad cable plants.
 - Prevents manufacturing fall-out due to bad cable plants.
- High CESD tolerance prevents equipment damage and return.
- Operates with larger packets for wider range of packet protocol support and improved efficiency.
- Ease of manufacturing with JTAG support, simplified power supply, and multiple MAC interfaces.
- Simplifies system and board design.
 - RGMII/RTBI reduces I/O pin requirement over GMII and TBI by more than 50%.

10/100/1000BASE-T Network Interface Card



1000BASE-T Gigabit Uplink

