

Coaxial High Pass Filter

BHP-50+ BHP-50

50Ω 41 to 800 MHz

Maximum Ratings

Operating Temperature	-55°C to 100°C
Storage Temperature	-55°C to 100°C
RF Power Input	0.5W max.

Features

- rugged shielded case
- other standard and custom BHP models available with wide selection of fco

Applications

- lab use
- transmitters/receivers
- radio communications



CASE STYLE: FF55

Connectors	Model	Price	Qty.
BNC	BHP-50(+)	\$36.95 ea.	(1-9)

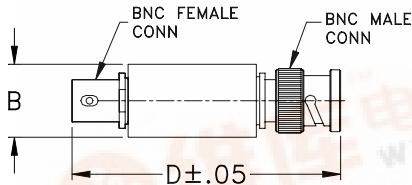
+ RoHS compliant in accordance with EU Directive (2002/95/EC)

The +Suffix identifies RoHS Compliance. See our web site for RoHS Compliance methodologies and qualifications.

High Pass Filter Electrical Specifications

STOPBAND (MHz)	fco (MHz) Nom.	PASSBAND (MHz)	VSWR (:1)	
			Stopband Typ.	Passband Typ.
(loss > 40 dB) DC-20	(loss > 20 dB) 20-26	(loss < 3 dB) 37	17	1.5

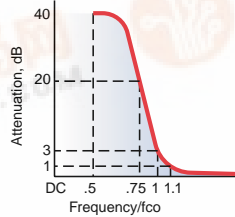
Outline Drawing



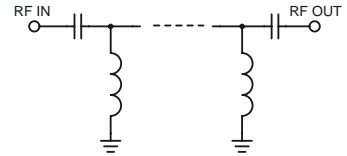
Outline Dimensions (inch/mm)

B	D	wt
.54	2.59	grams
13.72	65.79	40.0

typical frequency response



electrical schematic



Typical Performance Data

Frequency (MHz)	Insertion Loss (dB) \bar{x}	σ	Return Loss (dB)	Frequency (MHz)	Group Delay (nsec)
10.00	69.20	3.81	0.15	20.00	18.03
20.00	45.38	0.93	0.39	22.00	15.59
22.00	38.53	1.25	0.46	24.00	18.34
24.00	31.83	1.18	0.49	26.00	22.61
26.00	25.35	1.28	0.57	28.00	28.85
28.00	18.94	1.39	0.70	30.00	37.79
30.00	12.65	1.53	1.08	32.00	46.09
32.00	6.90	1.45	2.21	34.00	49.90
34.00	2.95	0.88	5.90	35.00	49.53
35.00	1.94	0.57	9.57	36.00	47.70
36.00	1.35	0.34	15.32	37.00	44.59
37.00	1.09	0.20	25.05	38.00	40.68
38.00	0.94	0.11	27.33	39.00	36.49
39.00	0.89	0.08	21.46	40.00	32.54
40.00	0.82	0.05	19.28	41.00	29.16
41.00	0.77	0.04	18.56	42.00	26.41
42.00	0.72	0.03	18.59	43.00	24.22
43.00	0.69	0.02	19.15	44.00	22.42
44.00	0.65	0.03	20.27	45.00	20.92
45.00	0.61	0.02	21.55	50.00	15.63
100.00	0.26	0.01	30.08	100.00	3.44
200.00	0.24	0.01	20.42	200.00	1.07
300.00	0.26	0.01	19.21	300.00	0.65
400.00	0.29	0.01	18.08	400.00	0.50
500.00	0.32	0.01	16.88	500.00	0.44
600.00	0.37	0.01	15.79	600.00	0.40
650.00	0.40	0.01	15.36	650.00	0.38
700.00	0.41	0.02	14.80	700.00	0.36
750.00	0.44	0.02	14.36	750.00	0.36
800.00	0.46	0.02	13.93	800.00	0.36

