

<div style="border: 1px solid black; border-radius: 10px; padding: 5px; display: inline-block;"> <b>LCD Module Specification</b> </div>	First Edition	Approved by	Production Div.
	June 12, 1998	Checked by	Quality Assurance Div.
	Final Revision	Checked by	Design Engineering Div.
	*****	Prepared by	Production Div.
Type No.	DMF 5 0 0 1 NYL		

Table of Contents

1. General Specifications .....	2
2. Electrical Specifications .....	3
3. Optical Specifications .....	6
4. I/O Terminal .....	8
5. Test .....	10
6. Appearance Standards .....	11
7. Code System of Production Lot .....	14
8. Type Number .....	14
9. Applying Precautions .....	14
10. Handling Precautions .....	15

Revision History

Rev.	Date	Page	Comment



## 1. General Specifications

Operating Temp.	: min. 0°C ~ max. 50°C
Storage Temp.	: min. -20°C ~ max. 60°C
Dot Pixels	: 160 (W) × 128 (H) dots
Dot Size	: 0.54 (W) × 0.54 (H) mm
Dot Pitch	: 0.58 (W) × 0.58 (H) mm
Viewing Area	: 101.0 (W) × 82.0 (H) mm
Outline Dimensions	: 129.0 (W) × 102.0 (H) × 12.8 max. (D) mm
Weight	: 120g max.
LCD Type	: NRD-7353 ( STN / Neutral -mode / Reflective )
Viewing Angle	: 9:00
Control LSI	: T6963C-0101 (Produced by TOSHIBA)
Data Transfer	: 8-bit data transfer
Backlight	: None
Drawings	: Dimensional Outline UE-31324A

## 2. Electrical Specifications

### 2.1. Absolute Maximum Ratings

V<sub>SS</sub>=0V

Parameter	Symbol	Conditions	Min.	Max.	Units
Supply Voltage (Logic)	V <sub>DD</sub> -V <sub>SS</sub>	—	-0.3	7.0	V
Supply Voltage (LCD Drive)	V <sub>DD</sub> -V <sub>EE</sub>	—	0	28.0	V
Input Voltage	V <sub>I</sub>	—	-0.3	V <sub>DD</sub> +0.3	V

### 2.2. DC Characteristics

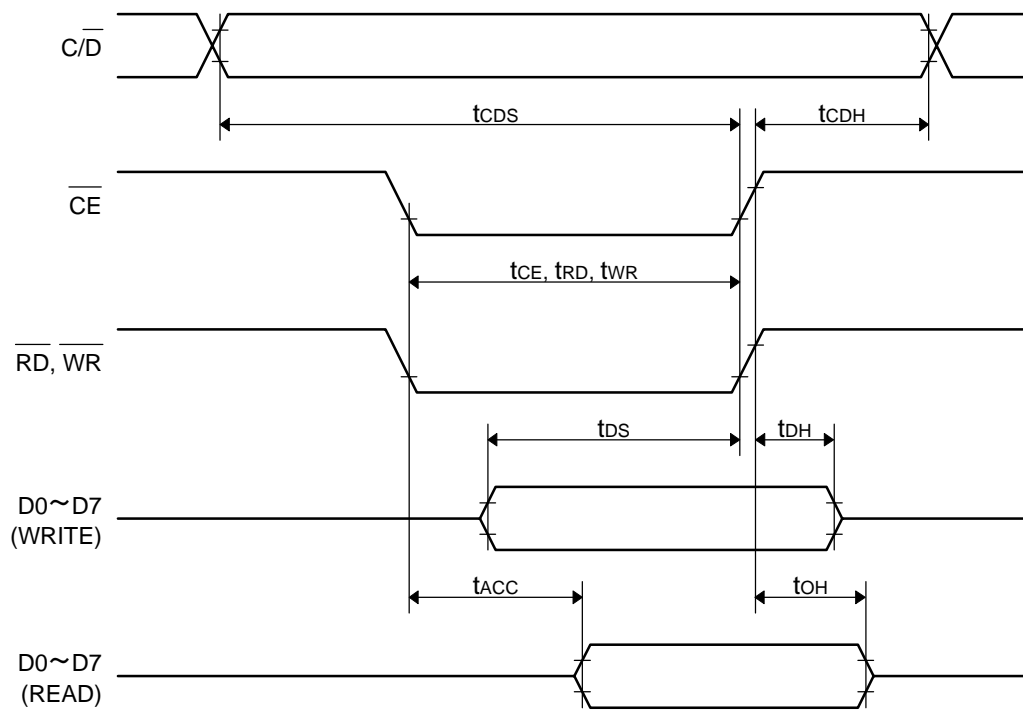
T<sub>a</sub>=25°C, V<sub>SS</sub>=0V

Parameter	Symbol	Conditions	Min.	Typ.	Max.	Units
Supply Voltage (Logic)	V <sub>DD</sub> -V <sub>SS</sub>	—	4.5	—	5.5	V
Supply Voltage (LCD Drive)	V <sub>DD</sub> -V <sub>EE</sub>	—	23.0	—	26.0	V
	V <sub>DD</sub> -V <sub>CONT</sub>	Shown in 3.1				V
High Level Input Voltage	V <sub>IH</sub>	V <sub>DD</sub> =5.0V ± 10%	V <sub>DD</sub> -2.2	—	V <sub>DD</sub>	V
Low Level Input Voltage	V <sub>IL</sub>	V <sub>DD</sub> =5.0V ± 10%	0	—	0.8	V
High Level Output Voltage	V <sub>OH</sub>	I <sub>OH</sub> =-0.75mA	V <sub>DD</sub> -0.3	—	V <sub>DD</sub>	V
Low Level Output Voltage	V <sub>OL</sub>	I <sub>OL</sub> =0.75mA	0	—	0.3	V
Supply Current	I <sub>DD</sub>	V <sub>DD</sub> -V <sub>SS</sub> =5.0V	—	13.4	30.0	mA
	I <sub>EE</sub>	V <sub>DD</sub> -V <sub>CONT</sub> =19.4V	—	3.7	20.0	mA

### 2.3.AC Characteristics

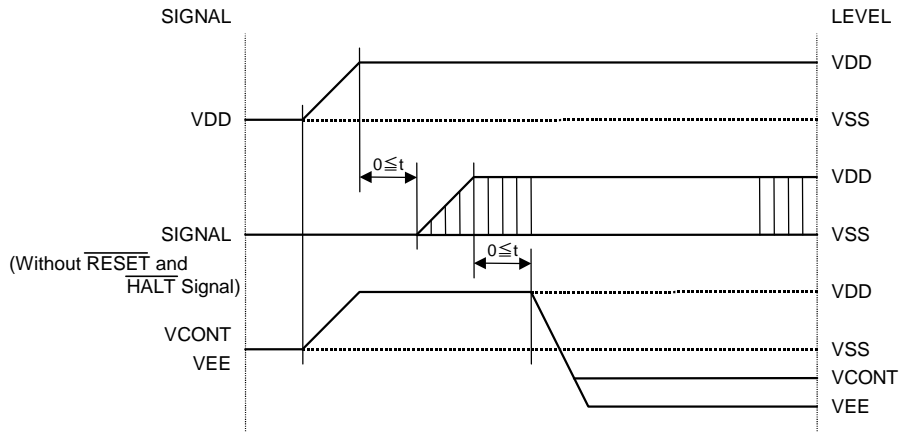
$V_{DD}=5.0V \pm 10\%$

Parameter	Symbol	Min.	Max.	Units
C/D Setup Time	$t_{CDS}$	100	—	ns
C/D Hold Time	$t_{CDH}$	10	—	ns
$\overline{CE}$ , $\overline{RD}$ , $\overline{WR}$ Pulse Width	$t_{CE}$ , $t_{RD}$ , $t_{WR}$	80	—	ns
Data Setup Time	$t_{DS}$	80	—	ns
Data Hold Time	$t_{DH}$	40	—	ns
Access Time	$t_{ACC}$	—	150	ns
Output Hold Time	$t_{OH}$	10	50	ns

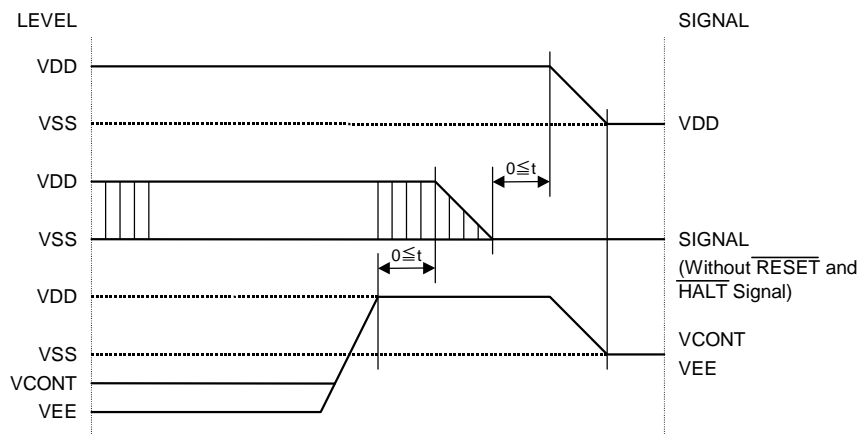


## 2.4. Power Supply ON/OFF Sequence

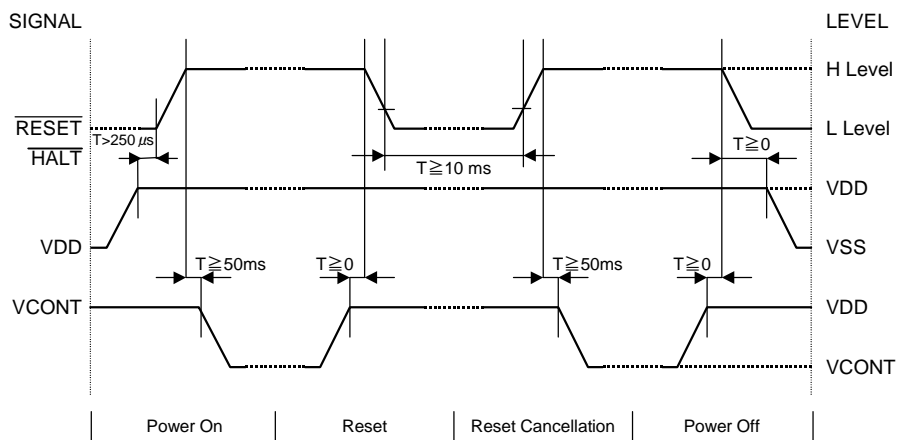
### 2.4.1. ON Sequence



### 2.4.2. OFF Sequence



### 2.4.3. Reset Sequence



Please maintain the above sequence when turning on and off the power supply of the module. If **VEE** and/or **VCONT** is supplied to the module while internal alternate signal for LCD driving (M) is unstable or **RESET** and **HALT** is active, DC component will be supplied to the LCD panel. This may cause damage to the LCD module.

### 3. Optical Specifications

#### 3.1. LCD Driving Voltage

Parameter	Symbol	Conditions	Min.	Typ.	Max.	Units
Recommended LCD Driving Voltage Note 1	$V_{DD}-V_{CONT}$	$T_a=0^{\circ}\text{C}$	—	—	23.0	V
		$T_a=25^{\circ}\text{C}$	18.1	19.4	20.7	V
		$T_a=50^{\circ}\text{C}$	16.3	—	—	V

Note 1 : Voltage (Applied actual waveform to LCD Module) for the best contrast. The range of minimum and maximum shows tolerance of the operating voltage. The specified contrast ratio and response time are not guaranteed over the entire range.

#### 3.2. Optical Characteristics

$T_a=25^{\circ}\text{C}$ , 1/128 Duty, 1/12.3 Bias,  $V_D=18.8\text{V}$  (Note 4),  $\theta = 0^{\circ}$ ,  $\phi = -^{\circ}$

Parameter	Symbol	Conditions	Min.	Typ.	Max.	Units
Contrast Ratio Note 1	CR	$\theta = 0^{\circ}$ , $\phi = -^{\circ}$	—	8	—	
Viewing Angle		Shown in 3.3				
Response Time	Rise Note 2	$T_{ON}$	—	180	270	ms
	Decay Note 3	$T_{OFF}$	—	350	530	ms

Note 1 : Contrast ratio is defined as follows.

$$CR = L_{OFF} / L_{ON}$$

$L_{ON}$  : Luminance of the ON segments

$L_{OFF}$  : Luminance of the OFF segments

Note 2 : The time that the luminance level reaches 90% of the saturation level from 0% when ON signal is applied.

Note 3 : The time that the luminance level reaches 10% of the saturation level from 100% when OFF signal is applied.

Note 4 : Definition of Driving Voltage  $V_D$

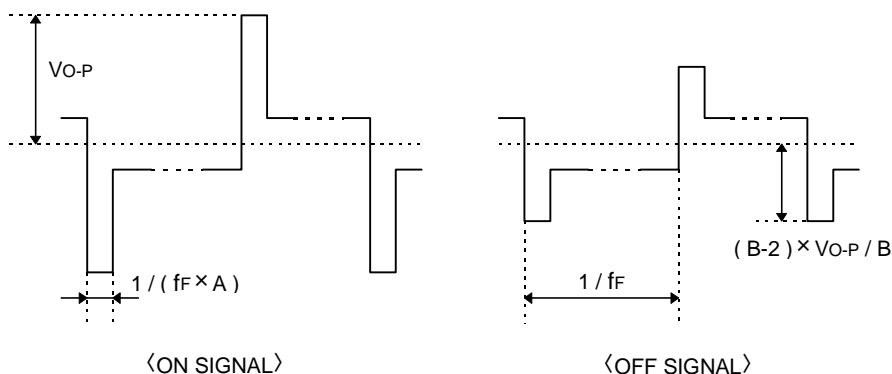
$$V_D = V_{DD} - V_{CONT} - V_{BE}$$

Assuming that the typical driving waveforms shown below are applied to the LCD Panel at 1/A Duty - 1/B Bias ( A : Duty Number, B : Bias Number ). Driving voltage  $V_D$  is defined as follows.

$$V_D = (V_{th1} + V_{th2}) / 2$$

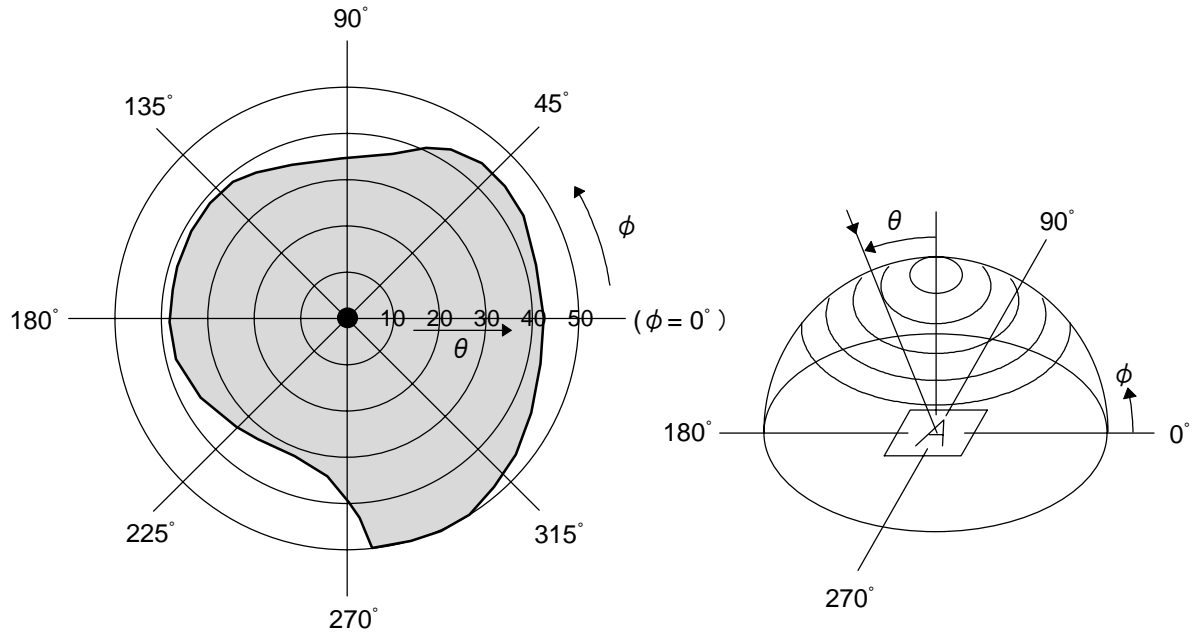
$V_{th1}$  : The voltage  $V_{O-P}$  that should provide 50% of the saturation level in the luminance at the segment which the ON signal is applied to.


$V_{th2}$  : The voltage  $V_{O-P}$  that should provide 50% of the saturation level in the luminance at the segment which the OFF signal is applied to.



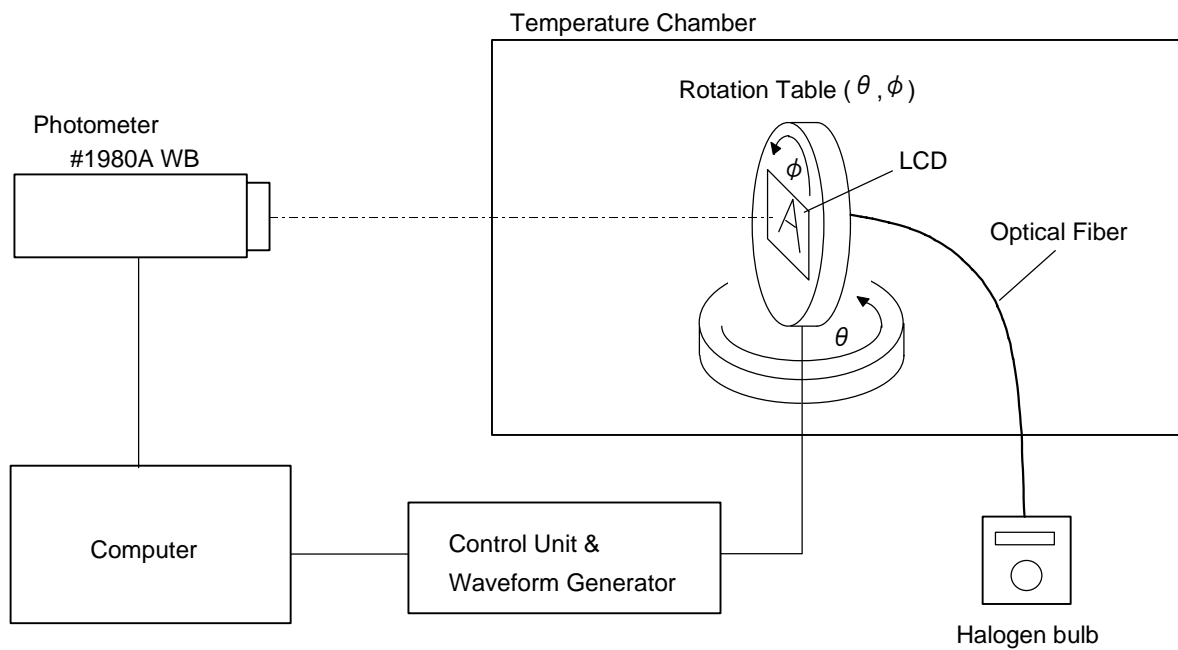
### 3.3. Definition of Viewing Angle and Optimum Viewing Area

- Point ● shows the point where contrast ratio is measured. :  $\theta = 0^\circ$ ,  $\phi = -^\circ$
- Driving condition : 1/128 Duty, 1/12.3 Bias,  $V_D=18.8V$ ,  $f_F=70Hz$



• Area  shows typ.  $CR \geq 2$

### 3.4. System Block Diagram



## 4. I/O Terminal

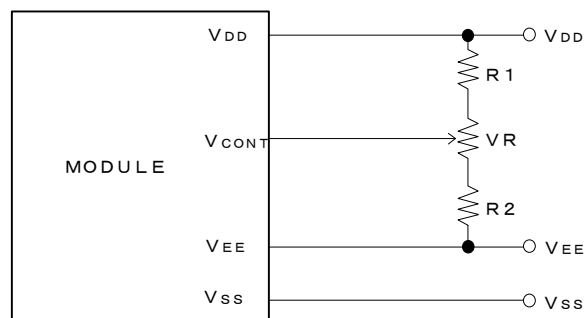
### 4.1. Pin Assignment

#### CN1

No.	Symbol	Level	Function
1	FG	—	Frame Ground
2	V <sub>SS</sub>	—	Power Supply (0V, GND)
3	V <sub>DD</sub>	—	Power Supply for Logic
4	V <sub>CONT</sub>	—	Voltage Level for LCD Contrast Adjustment
5	V <sub>EE</sub>	—	Power Supply for LCD Drive
6	$\overline{\text{WR}}$	H / L	Command and Data Write Signal
7	$\overline{\text{RD}}$	H / L	Data and Status Read Signal
8	$\overline{\text{CE}}$	H / L	Chip Enable Signal
9	C/D	H / L	Write Mode H : Command Write L : Data Write Read Mode H : Status Read L : Data Read
10	$\overline{\text{HALT}}$	H / L	Clock Operating Stop Signal
11	$\overline{\text{RESET}}$	H / L	Reset Signal
12	D0	H / L	Data Bus
13	D1	H / L	Data Bus
14	D2	H / L	Data Bus
15	D3	H / L	Data Bus
16	D4	H / L	Data Bus
17	D5	H / L	Data Bus
18	D6	H / L	Data Bus
19	D7	H / L	Data Bus
20	NC	—	Non-connection

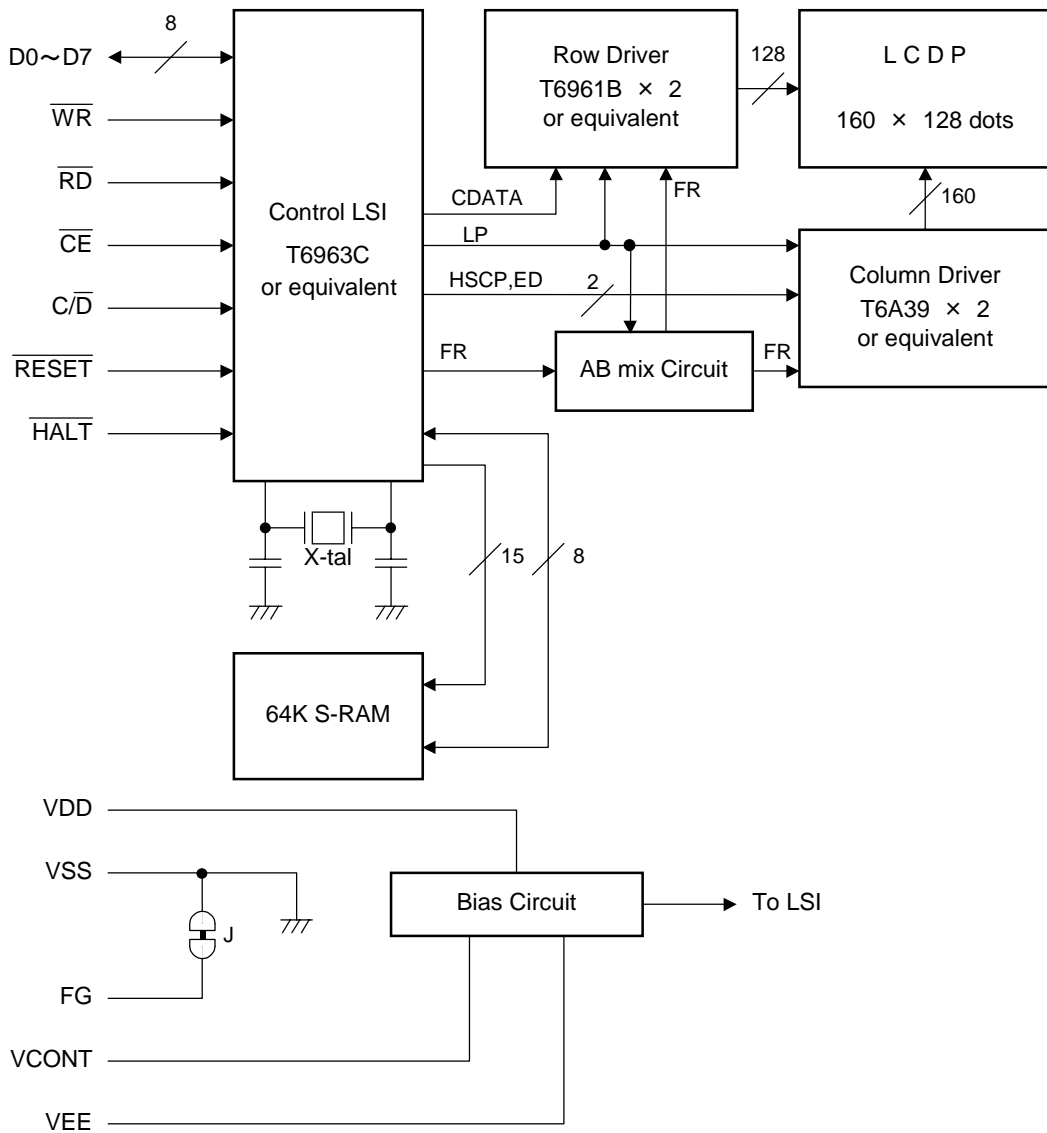
### 4.2. Example of Power Supply

It is recommended to apply a potentiometer for the contrast adjust due to the tolerance of the driving voltage and its temperature dependence.



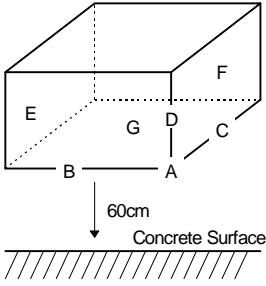
$$R1 + R2 + VR : 10 \sim 20 K\Omega$$

### 4.3. Block Diagram



## 5. Test

No change on display and in operation under the following test condition.

No.	Parameter	Conditions	Notes
1	High Temperature Operating	50°C ± 2°C, 96hrs (operation state)	
2	Low Temperature Operating	0°C ± 2°C, 96hrs (operation state)	3
3	High Temperature Storage	60°C ± 2°C, 96hrs	4
4	Low Temperature Storage	-20°C ± 2°C, 96hrs	3, 4
5	Damp Proof Test	40°C ± 2°C, 90~95%RH, 96hrs	3, 4
6	Vibration Test	Total fixed amplitude : 1.5mm Vibration Frequency : 10~55Hz One cycle 60 seconds to 3 directions of X, Y, Z for each 15 minutes	5
7	Shock Test	To be measured after dropping from 60cm high on the concrete surface in packing state. 	

Dropping method corner dropping

A corner : once

Edge dropping

B,C,D edge : once

Face dropping

E,F,G face : once

Note 1 : Unless otherwise specified, tests will be conducted under the following condition.

Temperature : 20 ± 5°C

Humidity : 65 ± 5%

Note 2 : Unless otherwise specified, tests will be not conducted under functioning state.

Note 3 : No dew condensation to be observed.

Note 4 : The function test shall be conducted after 4 hours storage at the normal temperature and humidity after removed from the test chamber.

Note 5 : Vibration test will be conducted to the product itself without putting it in a container.

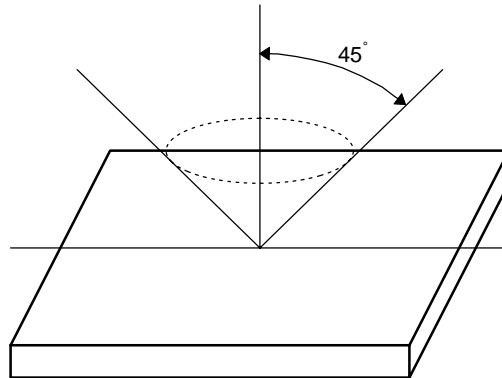
## 6. Appearance Standards

### 6.1. Inspection conditions

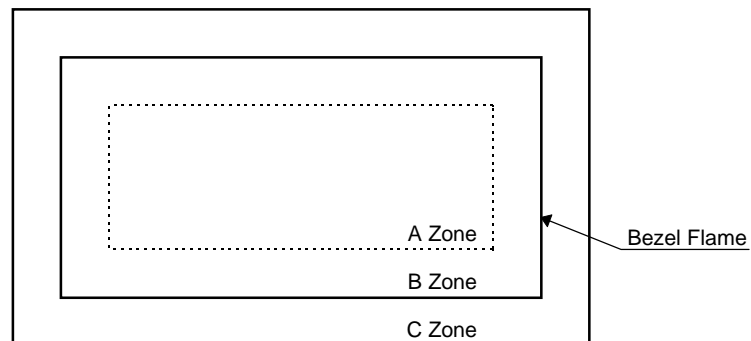
The LCD shall be inspected under 40W white fluorescent light.

The distance between the eyes and the sample shall be more than 30cm.

All directions for inspecting the sample should be within  $45^\circ$  against perpendicular line.



### 6.2. Definition of applicable Zones



A Zone : Active display area

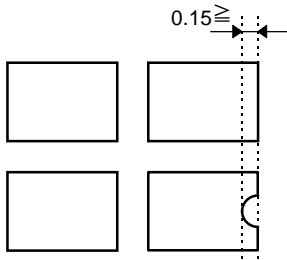
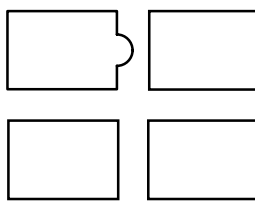
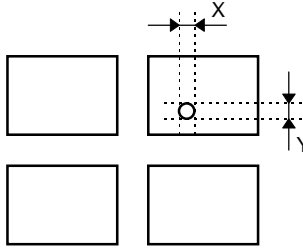
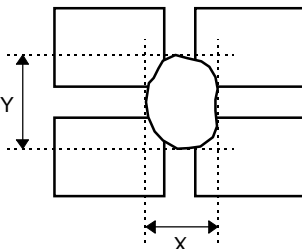
B Zone : Area from outside of "A Zone" to validity viewing area

C Zone : Rest parts

A Zone + B Zone = Validity viewing area

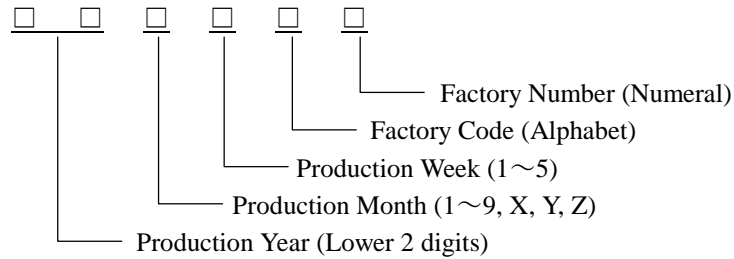
6.3.Standards

No.	Parameter	Criteria																																																										
1	Black and White Spots, Foreign Substances	<p>(1) Round Shape</p> <table border="1" data-bbox="608 427 1369 763"> <thead> <tr> <th data-bbox="608 427 911 524">Zone Dimension (mm)</th> <th colspan="3" data-bbox="911 427 1369 477">Acceptable Number</th> </tr> <tr> <th data-bbox="608 477 911 524"></th> <th data-bbox="911 477 1062 524">A</th> <th data-bbox="1062 477 1214 524">B</th> <th data-bbox="1214 477 1369 524">C</th> </tr> </thead> <tbody> <tr> <td data-bbox="608 524 911 573">D ≤ 0.1</td> <td data-bbox="911 524 1062 573">*</td> <td data-bbox="1062 524 1214 573">*</td> <td data-bbox="1214 524 1369 573">*</td> </tr> <tr> <td data-bbox="608 573 911 622">0.1 &lt; D ≤ 0.2</td> <td data-bbox="911 573 1062 622">3</td> <td data-bbox="1062 573 1214 622">5</td> <td data-bbox="1214 573 1369 622">*</td> </tr> <tr> <td data-bbox="608 622 911 672">0.2 &lt; D ≤ 0.25</td> <td data-bbox="911 622 1062 672">2</td> <td data-bbox="1062 622 1214 672">3</td> <td data-bbox="1214 622 1369 672">*</td> </tr> <tr> <td data-bbox="608 672 911 721">0.25 &lt; D ≤ 0.3</td> <td data-bbox="911 672 1062 721">0</td> <td data-bbox="1062 672 1214 721">1</td> <td data-bbox="1214 672 1369 721">*</td> </tr> <tr> <td data-bbox="608 721 911 763">0.3 &lt; D</td> <td data-bbox="911 721 1062 763">0</td> <td data-bbox="1062 721 1214 763">0</td> <td data-bbox="1214 721 1369 763">*</td> </tr> </tbody> </table> <p data-bbox="624 775 1075 808">D = ( Long + Short ) / 2      * : Disregard</p> <p>(2) Line Shape</p> <table border="1" data-bbox="608 860 1369 1146"> <thead> <tr> <th colspan="2" data-bbox="608 860 911 956">Zone X (mm)    Y (mm)</th> <th colspan="3" data-bbox="911 860 1369 909">Acceptable Number</th> </tr> <tr> <th colspan="2" data-bbox="608 909 911 956"></th> <th data-bbox="911 909 1062 956">A</th> <th data-bbox="1062 909 1214 956">B</th> <th data-bbox="1214 909 1369 956">C</th> </tr> </thead> <tbody> <tr> <td data-bbox="608 956 759 1005">—</td> <td data-bbox="759 956 911 1005">0.03 ≥ W</td> <td data-bbox="911 956 1062 1005">*</td> <td data-bbox="1062 956 1214 1005">*</td> <td data-bbox="1214 956 1369 1005">*</td> </tr> <tr> <td data-bbox="608 1005 759 1055">2.0 ≥ L</td> <td data-bbox="759 1005 911 1055">0.05 ≥ W</td> <td data-bbox="911 1005 1062 1055">3</td> <td data-bbox="1062 1005 1214 1055">3</td> <td data-bbox="1214 1005 1369 1055">*</td> </tr> <tr> <td data-bbox="608 1055 759 1104">1.0 ≥ L</td> <td data-bbox="759 1055 911 1104">0.1 ≥ W</td> <td data-bbox="911 1055 1062 1104">3</td> <td data-bbox="1062 1055 1214 1104">3</td> <td data-bbox="1214 1055 1369 1104">*</td> </tr> <tr> <td data-bbox="608 1104 759 1146">—</td> <td data-bbox="759 1104 911 1146">0.1 &lt; W</td> <td colspan="3" data-bbox="911 1104 1369 1146">In the same way (1)</td> </tr> </tbody> </table> <p data-bbox="624 1158 1067 1191">X : Length    Y : Width      * : Disregard</p> <p data-bbox="587 1202 932 1236">Total defects shall not exceed 5.</p>	Zone Dimension (mm)	Acceptable Number				A	B	C	D ≤ 0.1	*	*	*	0.1 < D ≤ 0.2	3	5	*	0.2 < D ≤ 0.25	2	3	*	0.25 < D ≤ 0.3	0	1	*	0.3 < D	0	0	*	Zone X (mm)    Y (mm)		Acceptable Number					A	B	C	—	0.03 ≥ W	*	*	*	2.0 ≥ L	0.05 ≥ W	3	3	*	1.0 ≥ L	0.1 ≥ W	3	3	*	—	0.1 < W	In the same way (1)		
Zone Dimension (mm)	Acceptable Number																																																											
	A	B	C																																																									
D ≤ 0.1	*	*	*																																																									
0.1 < D ≤ 0.2	3	5	*																																																									
0.2 < D ≤ 0.25	2	3	*																																																									
0.25 < D ≤ 0.3	0	1	*																																																									
0.3 < D	0	0	*																																																									
Zone X (mm)    Y (mm)		Acceptable Number																																																										
		A	B	C																																																								
—	0.03 ≥ W	*	*	*																																																								
2.0 ≥ L	0.05 ≥ W	3	3	*																																																								
1.0 ≥ L	0.1 ≥ W	3	3	*																																																								
—	0.1 < W	In the same way (1)																																																										
2	Air Bubbles (between glass & polarizer)	<table border="1" data-bbox="608 1292 1369 1579"> <thead> <tr> <th data-bbox="608 1292 911 1388">Zone Dimension (mm)</th> <th colspan="3" data-bbox="911 1292 1369 1341">Acceptable Number</th> </tr> <tr> <th data-bbox="608 1341 911 1388"></th> <th data-bbox="911 1341 1062 1388">A</th> <th data-bbox="1062 1341 1214 1388">B</th> <th data-bbox="1214 1341 1369 1388">C</th> </tr> </thead> <tbody> <tr> <td data-bbox="608 1388 911 1438">D ≤ 0.3</td> <td data-bbox="911 1388 1062 1438">*</td> <td data-bbox="1062 1388 1214 1438">*</td> <td data-bbox="1214 1388 1369 1438">*</td> </tr> <tr> <td data-bbox="608 1438 911 1487">0.3 &lt; D ≤ 0.4</td> <td data-bbox="911 1438 1062 1487">3</td> <td data-bbox="1062 1438 1214 1487">*</td> <td data-bbox="1214 1438 1369 1487">*</td> </tr> <tr> <td data-bbox="608 1487 911 1536">0.4 &lt; D ≤ 0.6</td> <td data-bbox="911 1487 1062 1536">2</td> <td data-bbox="1062 1487 1214 1536">3</td> <td data-bbox="1214 1487 1369 1536">*</td> </tr> <tr> <td data-bbox="608 1536 911 1579">0.6 &lt; D</td> <td data-bbox="911 1536 1062 1579">0</td> <td data-bbox="1062 1536 1214 1579">0</td> <td data-bbox="1214 1536 1369 1579">*</td> </tr> </tbody> </table> <p data-bbox="624 1590 769 1624">* : Disregard</p> <p data-bbox="587 1635 932 1668">Total defects shall not exceed 3.</p>	Zone Dimension (mm)	Acceptable Number				A	B	C	D ≤ 0.3	*	*	*	0.3 < D ≤ 0.4	3	*	*	0.4 < D ≤ 0.6	2	3	*	0.6 < D	0	0	*																																		
Zone Dimension (mm)	Acceptable Number																																																											
	A	B	C																																																									
D ≤ 0.3	*	*	*																																																									
0.3 < D ≤ 0.4	3	*	*																																																									
0.4 < D ≤ 0.6	2	3	*																																																									
0.6 < D	0	0	*																																																									

No.	Parameter	Criteria
3	The Shape of Dot	<p>(1) Dot Shape (with Dent)</p>  <p>As per the sketch of left hand.</p> <p>(2) Dot Shape (with Projection)</p>  <p>Should not be connected to next dot.</p> <p>(3) Pin Hole</p>  <p><math>(X+Y) / 2 \leq 0.2\text{mm}</math> (Less than 0.1mm is no counted.)</p> <p>(4) Deformation</p>  <p><math>(X+Y) / 2 \leq 0.2\text{mm}</math></p> <p>Total acceptable number : 1/dot, 5/cell (Defect number of (4) : 1pc.)</p>
4	Polarizer Scratches	Not to be conspicuous defects.
5	Polarizer Dirts	If the stains are removed easily from LCDP surface, the module is not defective.
6	Complex Foreign Substance Defects	Black spots, line shaped foreign substances or air bubbles between glass & polarizer should be 5pcs maximum in total.
7	Distance between Different Foreign Substance Defects	$D \leq 0.2$ : 20mm or more $0.2 < D$ : 40mm or more

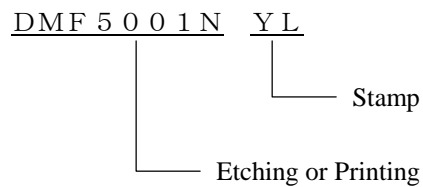
## 7. Code System of Production Lot

The production lot of module is specified as follows.



## 8. Type Number

The type number of module is specified on the back of module as follows.



## 9. Applying Precautions

Please contact us when questions and/or new problems not specified in this specifications arise.

## 10. Handling Precautions

Optrex Products are designed for use in ordinary electronic devices such as business machines, telecommunications equipment, measurement devices and etc..

Optrex Products are not designed, intended, or authorized for use in any application in which the failure of the product could result in a situation where personal injury or death may occur. These applications include, but are not limited to, life-sustaining equipment, nuclear control devices, aerospace equipment, devices related to hazardous or flammable materials, etc. (If Buyer intends to purchase or use the Optrex Products for such unintended or unauthorized applications, Buyer must secure prior written consent to such use by a responsible officer of Optrex Corporation.) Should Buyer purchase or use Optrex Products for any such unintended or unauthorized application (without such consent), Buyer shall indemnify and hold Optrex and its officers, employees, subsidiaries, affiliates and distributors harmless against all claims, costs, damages and expenses, and reasonable attorney's fees, arising out of, directly or indirectly, any claim of personal injury or death associated with such unintended or unauthorized use, even if such claim alleges that Optrex was negligent regarding the design or manufacture of the part.

- 1) LCD may be broken because it is made of glass.
- 2) Polarizer is a soft material and can easily be scratched.
- 3) Please avoid static electricity.
  - ① Please be sure to ground human body and electric appliances during work.
  - ② It is preferable to use conductive mat on table and wear cotton clothes or conduction processed fiber. Synthetic fiber is not recommended.
  - ③ Please slowly peel off protective film, because static electricity may be charged.
- 4) If it is necessary to store LCD modules for a long time, please comply with the following procedures. If storage condition is not satisfactory, display (especially polarizer) may be deteriorated or soldering I/O terminals may become difficult (some oxide is generated at I/O terminals plating).
  - ① Store as delivered by Optrex
  - ② If you store as unpacked, put in anti-static bag, seal its opening and store where it is not subjected to direct sunshine nor fluorescent lamp.
  - ③ Store at temperature 0 to +35°C and at low humidity. Please refer to our specification sheets for storage temperature range and humidity condition.
- 5) The module does not contain excess current limiter.  
Please design the limiter to cut excess current in your power supply circuit.
- 6) Liquid crystal may be leaked when display is broken. Never taste it. If your hands or clothes touch it, please immediately wash using soap.
- 7) The connection between the bezel and Vss (GND) is not specified in the module.  
(Some module do not maintain connection between them.)  
Please consult OPTREX to specify the connection.

Optrex shall not be responsible for any infringement of industrial property rights of third parties in any country arising out of the application or use of Optrex Products, except which directly concern the structure or production of such products.