

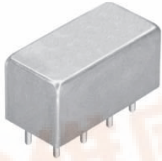
QUADRATURE HYBRID MODEL DQP-100-500

5:1 BANDWIDTH

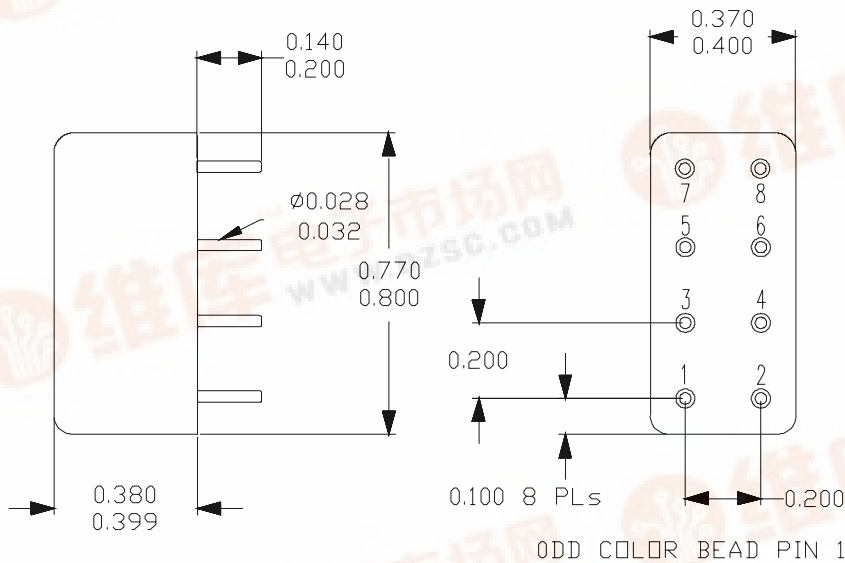
100 - 500 MHz

SPECIFICATIONS

Operating Frequency:	100 - 500 MHz	Phase Unbalance:	3.0° (Typ)/ 5.0° (Max)
Insertion Loss:	1.2 dB (Typ) / 1.5 dB (Max)	VSWR:	1.4:1 (Typ)
Isolation:	25 dB (Typ)/16 dB (Min)	Input Power Rating	1 Watt (Max)
Amplitude Unbalance:	0.8 dB (Typ) / 1.25 dB (Max)	Impedance:	50 Ohms
		Operating Temp. Range:	-20° to +70°C



MECHANICAL OUTLINE: 102



PIN-OUT

INPUT	Pin 1
ISOLATED*	Pin 2
+90° OUTPUT	Pin 8
0° OUTPUT	Pin 7
CASE GND	3,4,5,6

* Terminate ISOLATED port with 50 Ohms externally.



QUADRATURE HYBRID MODEL DQP-100-500

5:1 BANDWIDTH

100 - 500 MHz

PERFORMANCE PLOTS

