



January 1996

## DS26F32C/DS26F32M Quad Differential Line Receiver

### General Description

The DS26F32 is a quad differential line receiver designed to meet the requirements of EIA Standards RS-422 and RS-423, and Federal Standards 1020 and 1030 for balanced and unbalanced digital data transmission.

The DS26F32 offers improved performance due to the use of state-of-the-art L-FAST bipolar technology. The L-FAST technology allows for higher speeds and lower currents by utilizing extremely short gate delay times. Thus, the DS26F32 features lower power, extended temperature range, and improved specifications.

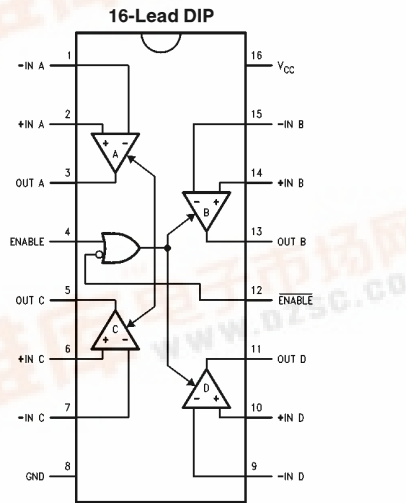
The device features an input sensitivity of 200 mV over the input common mode range of  $\pm 7.0V$ . The DS26F32 provides an enable function common to all four receivers and TRI-STATE® outputs with 8.0 mA sink capability. Also, a fail-safe input/output relationship keeps the outputs high when the inputs are open.

The DS26F32 offers optimum performance when used with the DS26F31 Quad Differential Line Driver.

### Features

- Military temperature range
- Input voltage range of  $\pm 7.0V$  (differential or common mode)  $\pm 0.2V$  sensitivity over the input voltage range
- Meets all the requirements of EIA standards RS-422 and RS-423
- High input impedance (18k typical)
- 30 mV input hysteresis
- Operation from single +5.0V supply
- Input pull-down resistor prevents output oscillation on unused channels
- TRI-STATE outputs, with choice of complementary enables, for receiving directly onto a data bus
- Propagation delay 15 ns typical

### Connection Diagrams



Top View

TL/F/9615-1

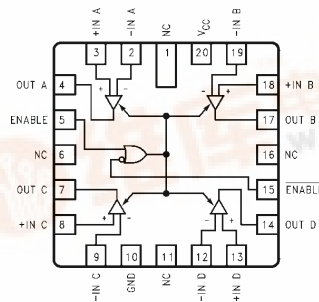
Order Number DS26F32CJ or DS26F32MJ  
See NS Package Number J16A

For Complete Military 883 Specifications,  
see RETS Datasheet.

Order Number DS26F32ME/883,  
DS26F32MJ/883 or DS26F32MW/883  
See NS Package Number E20A, J16A or W16A

TRI-STATE® is a registered trademark of National Semiconductor Corporation.

### 20-Lead Ceramic Leadless Chip Carrier



TL/F/9615-7

### Function Table (Each Receiver)

Differential Inputs	Enables		Outputs
$V_{ID} = (V_{IN+}) - (V_{IN-})$	E	$\bar{E}$	OUT
$V_{ID} \geq 0.2V$	H	X	H
	X	L	H
$V_{ID} \leq -0.2V$	H	X	L
	X	L	L
X	L	H	Z

H = High Level  
L = Low Level  
X = Immaterial



## Absolute Maximum Ratings (Note 1)

If Military/Aerospace specified devices are required, please contact the National Semiconductor Sales Office/Distributors for availability and specifications.

Storage Temperature Range		–65°C to +175°C
Ceramic DIP		
Operating Temperature Range		–55°C to +125°C
DS26F32M		
DS26F32C		0°C to +70°C
Lead Temperature		
Ceramic DIP (soldering, 60 sec)		300°C
Maximum Power Dissipation* at 25°C		
Cavity Package		1500 mW
Supply Voltage		7.0V

\*Derate cavity package 10 mW/°C above 25°C.

Common Mode Voltage Range	±25V
Differential Input Voltage	±25V
Enable Voltage	7.0V
Output Sink Current	50 mA

## Operating Range

DS26F32C		
Temperature		0°C to +70°C
Supply Voltage		4.75V to 5.25V
DS26F32M		
Temperature		–55°C to +125°C
Supply Voltage		4.5V to 5.5V

## Electrical Characteristics Over operating range, unless otherwise specified (Notes 2 and 3)

Symbol	Parameter	Conditions	Min	Typ	Max	Units
V <sub>TH</sub>	Differential Input Voltage	–7.0V ≤ V <sub>CM</sub> ≤ +7.0V, V <sub>O</sub> = V <sub>OL</sub> or V <sub>OH</sub>	–0.2	±0.06	+0.2	V
R <sub>I</sub>	Input Resistance	–15V ≤ V <sub>CM</sub> ≤ +15V, One Input AC Ground	14	18		kΩ
I <sub>I</sub>	Input Current (under Test)	V <sub>I</sub> = +15V, Other Input –15V ≤ V <sub>I</sub> ≤ +15V			2.3	mA
		V <sub>I</sub> = –15V, Other Input –15V ≤ V <sub>I</sub> ≤ +15V			–2.8	
V <sub>OH</sub>	Output Voltage HIGH	V <sub>CC</sub> = Min, ΔV <sub>I</sub> = +1.0V, V <sub>ENABLE</sub> = 0.8V, I <sub>OH</sub> = –440 μA				V
		0°C to +70°C	2.8	3.4		
		–55°C to +125°C	2.5	3.4		
V <sub>OL</sub>	Output Voltage LOW	V <sub>CC</sub> = Min, ΔV <sub>I</sub> = –1.0V, V <sub>ENABLE</sub> = 0.8V				V
		I <sub>OL</sub> = 4.0 mA			0.4	
		I <sub>OL</sub> = 8.0 mA			0.45	
V <sub>IL</sub>	Enable Voltage LOW				0.8	V
V <sub>IH</sub>	Enable Voltage HIGH		2.0			V
V <sub>IC</sub>	Enable Clamp Voltage	V <sub>CC</sub> = Min, I <sub>I</sub> = –18 mA			–1.5	V
I <sub>OZ</sub>	Off State (High Impedance) Output Current	V <sub>CC</sub> = Max				μA
		V <sub>O</sub> = 2.4V			20	
		V <sub>O</sub> = 0.4V			–20	
I <sub>IL</sub>	Enable Current LOW	V <sub>I</sub> = 0.4V		–0.2	–0.36	mA
I <sub>IH</sub>	Enable Current HIGH	V <sub>I</sub> = 2.7V		0.5	10	μA
I <sub>I</sub>	Enable Input High Current	V <sub>I</sub> = 5.5V		1.0	50	μA
I <sub>OS</sub>	Output Short Circuit Current	V <sub>O</sub> = 0V, V <sub>CC</sub> = Max, (Note 4) ΔV <sub>I</sub> = +1.0V	–15	–50	–85	mA
I <sub>CC</sub>	Supply Current	V <sub>CC</sub> = Max, All V <sub>I</sub> = GND, Outputs Disabled		30	50	mA
V <sub>HYST</sub>	Input Hysteresis	T <sub>A</sub> = 25°C, V <sub>CC</sub> = 5.0V, V <sub>CM</sub> = 0V		30		mV

**Note 1:** "Absolute Maximum Ratings" are those values beyond which the safety of the device cannot be guaranteed. They are not meant to imply that the devices should be operated at these limits. The tables of "Electrical Characteristics" provide conditions for actual device operation.

**Note 2:** Unless otherwise specified min/max limits apply across the –55°C to +125°C temperature range for the DS26F32M and across the 0°C to +70°C range for the DS26F32C. All typicals are given for V<sub>CC</sub> = 5V and T<sub>A</sub> = 25°C.

**Note 3:** All currents into the device pins are positive; all currents out of the device pins are negative. All voltages are reference to ground unless otherwise specified.

**Note 4:** Only one output at a time should be shorted.

## Switching Characteristics $V_{CC} = 5.0V, T_A = 25^\circ C$

Symbol	Parameter	Conditions	Min	Typ	Max	Units
$t_{PLH}$	Input to Output	Figures 2, 3		15	22	ns
$t_{PHL}$	Input to Output			15	22	ns
$t_{LZ}$	Enable to Output	Figures 2, 4		14	18	ns
$t_{HZ}$	Enable to Output			15	20	ns
$t_{ZL}$	Enable to Output			13	18	ns
$t_{ZH}$	Enable to Output			12	16	ns

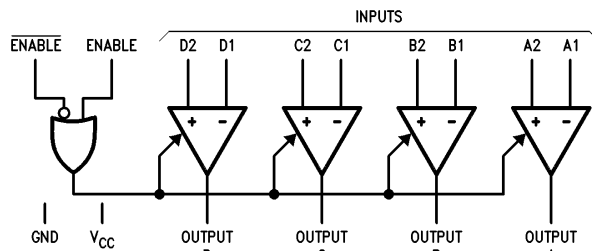


FIGURE 1. Logic Symbol

TL/F/9615-2

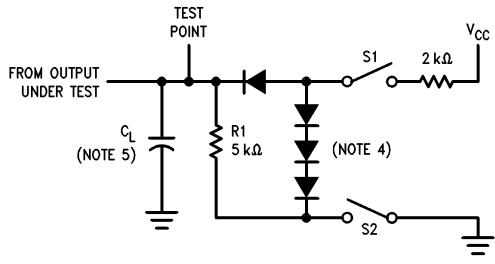
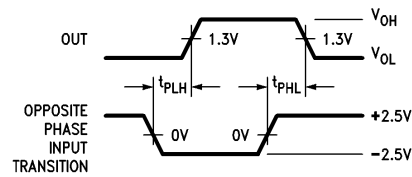


FIGURE 2. Load Test Circuit for Three-State Outputs

TL/F/9615-3



TL/F/9615-4

FIGURE 3. Propagation Delay (Notes 1, 2 and 3)

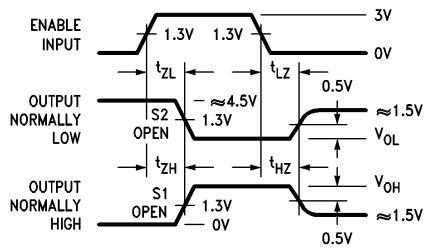


FIGURE 4. Enable and Disable Times (Notes 1, 2 and 3)

TL/F/9615-5

**Note 1:** Diagram shown for  $\overline{\text{ENABLE}}$  Low.

**Note 2:** S1 and S2 of Load Circuit are closed except where shown.

**Note 3:** Pulse Generator of all Pulses: Rate  $\leq 1.0$  MHz,  $Z_O = 50\Omega$ ,  $t_r \leq 6.0$  ns,  $t_f \leq 6.0$  ns.

**Note 4:** All diodes are IN916 or IN3064.

**Note 5:**  $C_L$  includes probe and jig capacitance.

## Typical Application

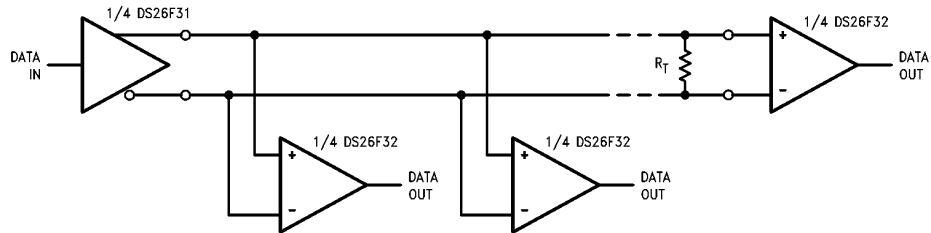
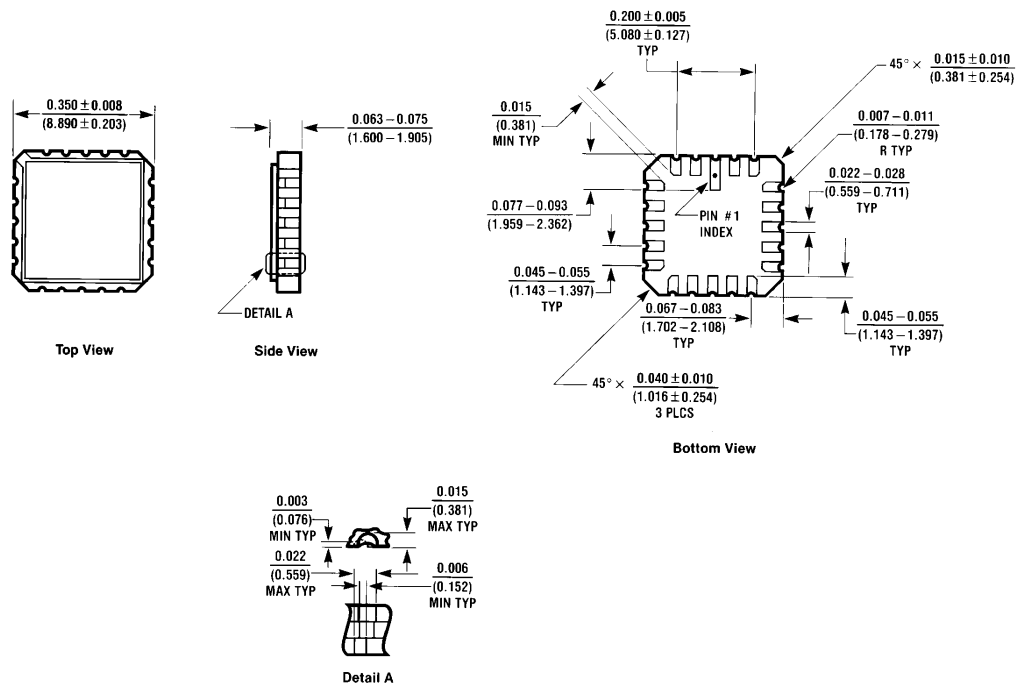


FIGURE 5

TL/F/9615-6

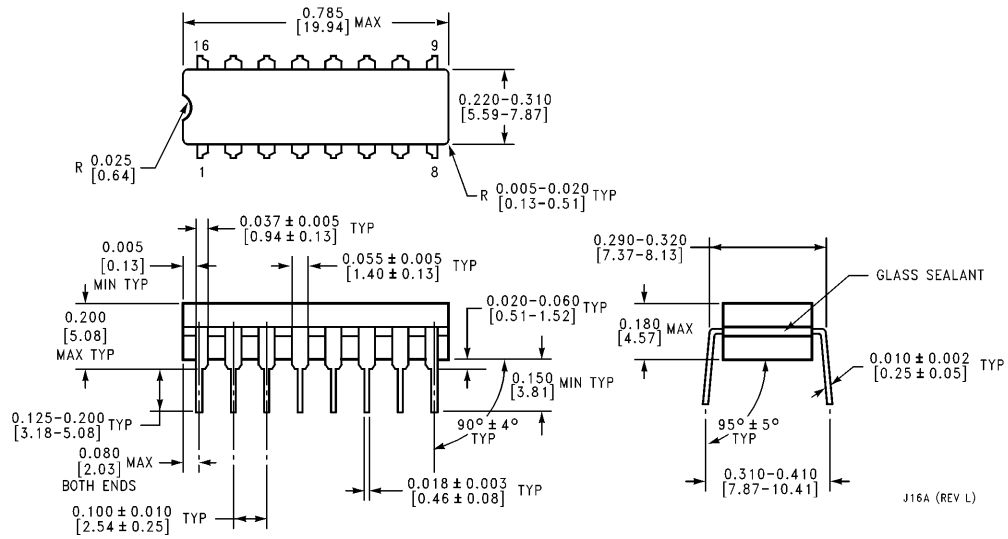
## Physical Dimensions inches (millimeters)



Order Number DS26F32ME/883  
NS Package Number E20A

E20A (REV D)

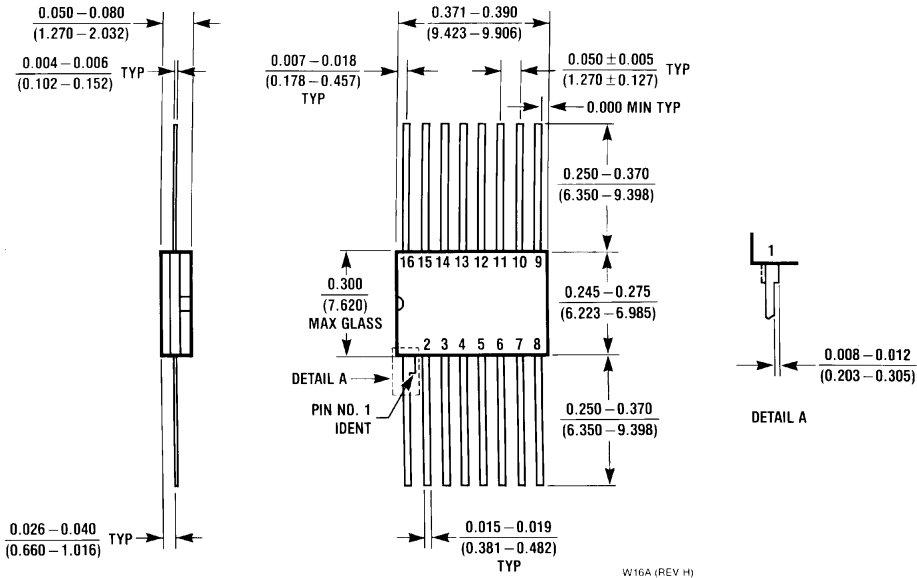
**Physical Dimensions** inches (millimeters) (Continued)



**Ceramic Dual-In-Line Package (J)**  
**Order Number DS26F32CJ, DS26F32MJ or DS26F32MJ/883**  
**NS Package Number J16A**

J16A (REV L)

**Physical Dimensions** inches (millimeters) (Continued)



**Order Number DS26F32MW/883**  
**NS Package Number W16A**

**LIFE SUPPORT POLICY**

NATIONAL'S PRODUCTS ARE NOT AUTHORIZED FOR USE AS CRITICAL COMPONENTS IN LIFE SUPPORT DEVICES OR SYSTEMS WITHOUT THE EXPRESS WRITTEN APPROVAL OF THE PRESIDENT OF NATIONAL SEMICONDUCTOR CORPORATION. As used herein:

1. Life support devices or systems are devices or systems which, (a) are intended for surgical implant into the body, or (b) support or sustain life, and whose failure to perform, when properly used in accordance with instructions for use provided in the labeling, can be reasonably expected to result in a significant injury to the user.
2. A critical component is any component of a life support device or system whose failure to perform can be reasonably expected to cause the failure of the life support device or system, or to affect its safety or effectiveness.

**National Semiconductor Corporation**  
 1111 West Bardin Road  
 Arlington, TX 76017  
 Tel: 1(800) 272-9959  
 Fax: 1(800) 737-7018

<http://www.national.com>

**National Semiconductor Europe**  
 Fax: +49 (0) 180-530 85 86  
 Email: [europe.support@nsc.com](mailto:europe.support@nsc.com)  
 Deutsch Tel: +49 (0) 180-530 85 85  
 English Tel: +49 (0) 180-532 78 32  
 Français Tel: +49 (0) 180-532 93 58  
 Italiano Tel: +49 (0) 180-534 16 80

**National Semiconductor Hong Kong Ltd.**  
 13th Floor, Straight Block,  
 Ocean Centre, 5 Canton Rd.  
 Tsimshatsui, Kowloon  
 Hong Kong  
 Tel: (852) 2737-1600  
 Fax: (852) 2736-9960

**National Semiconductor Japan Ltd.**  
 Tel: 81-043-299-2308  
 Fax: 81-043-299-2408